



iDea USA CT 1020 Screen Replacement

How to replace an iDea USA CT 1020 screen.

Written By: Nathanael Carlson



INTRODUCTION

Replace the screen correctly and completely. First by removing the backing plate. Then removing the electrical ribbon connections. Next, remove the camera and battery. Then Remove the screws holding the screen and the motherboard in place. Lastly remove the screen.



TOOLS:

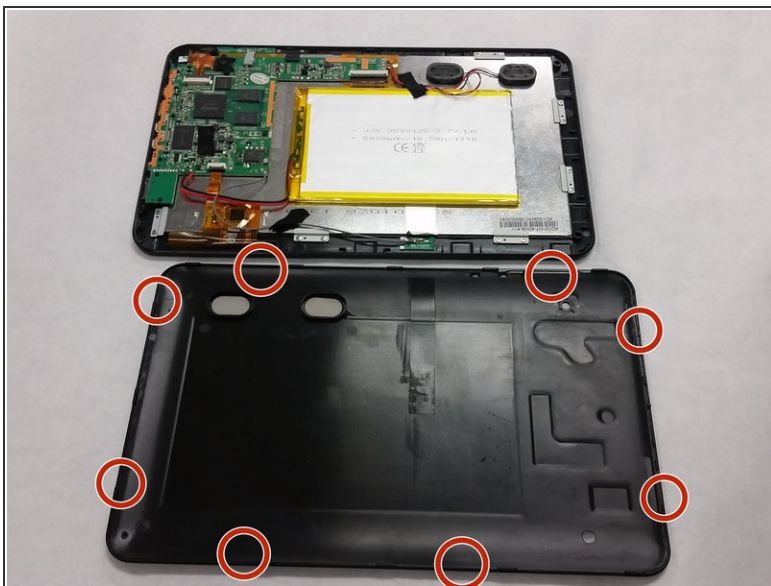
- [JIS #00 Screwdriver](#) (1)
 - [Flathead 3/32" or 2.5 mm Screwdriver](#) (1)
 - [iFixit Opening Tools](#) (1)
-

Step 1 — Screen



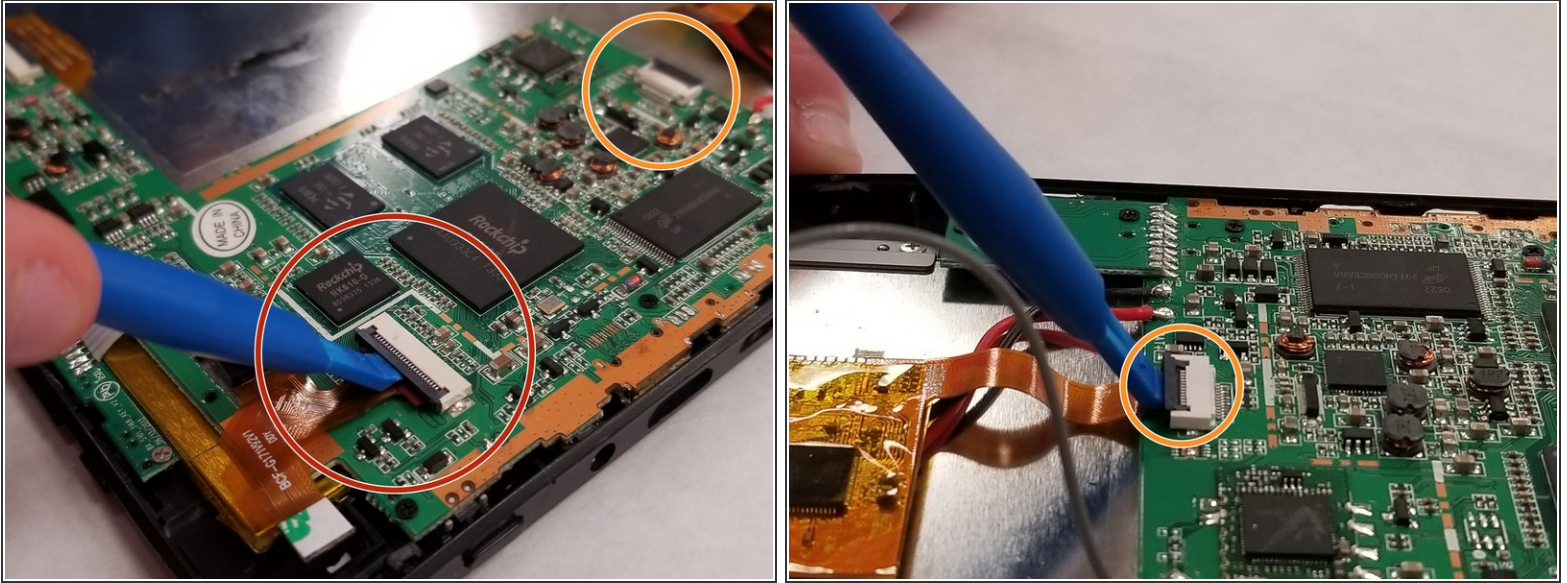
- ⚠ Start by powering off the device.
- Place the device on a clean surface with the screen facing down.

Step 2



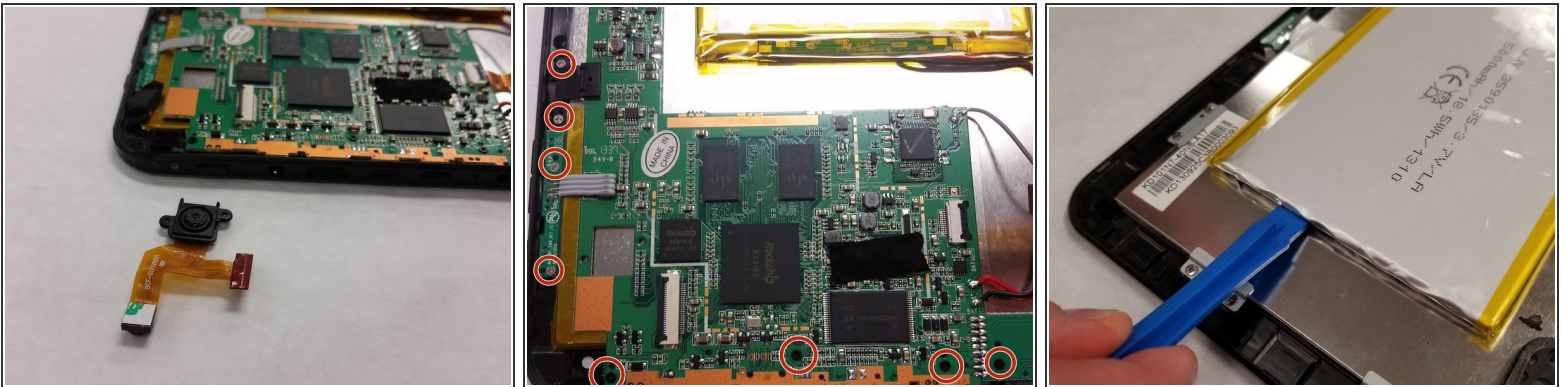
- Gently apply pressure to the back of the device where the backing case and screen meet.

Step 3



- Using a spudger or an iFixit opening tool, lift and release the camera assembly ZIF tabs.
 - Gently pull the ribbon cable free.
- Repeat this for the other tab.

Step 4



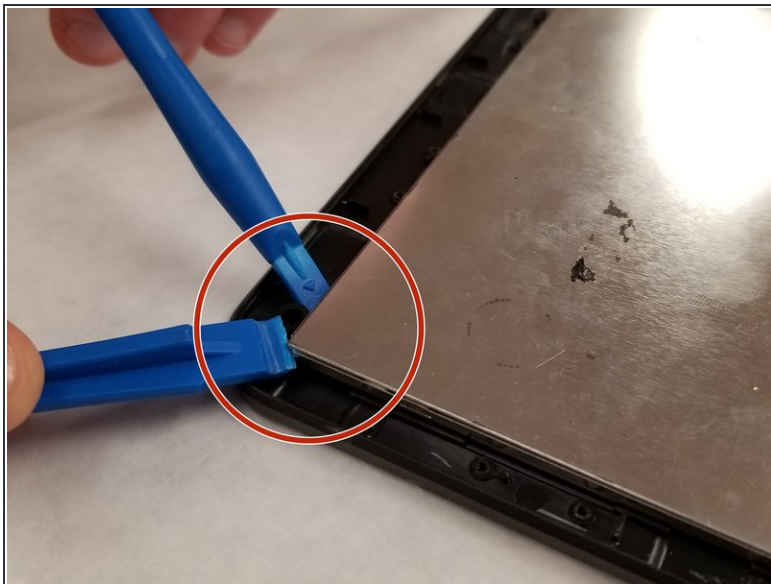
- Remove the disconnected camera by simply pulling it out of its socket.
- Remove eight 25mm JIS #00 screws securing the motherboard.
- The battery is glued to the back of the screen. Gently pry the battery off the screen, being careful not to bend the battery.

Step 5



- Remove ten 25mm JIS #00 screws securing the screen.

Step 6



- Wedge the edges of the opening tools into the gap between the screen and the screen casing.
⚠ Be very careful while prying the screen from its casing to avoid damage.

To reassemble your device, follow these instructions in reverse order.

This document was generated on 2020-11-28 06:25:01 AM (MST).

