



Aquaris M5 Mainboard Replacement

This Guide will show you how to replace the mainboard of your bq Aquaris M5.

Written By: Theo Mat



INTRODUCTION

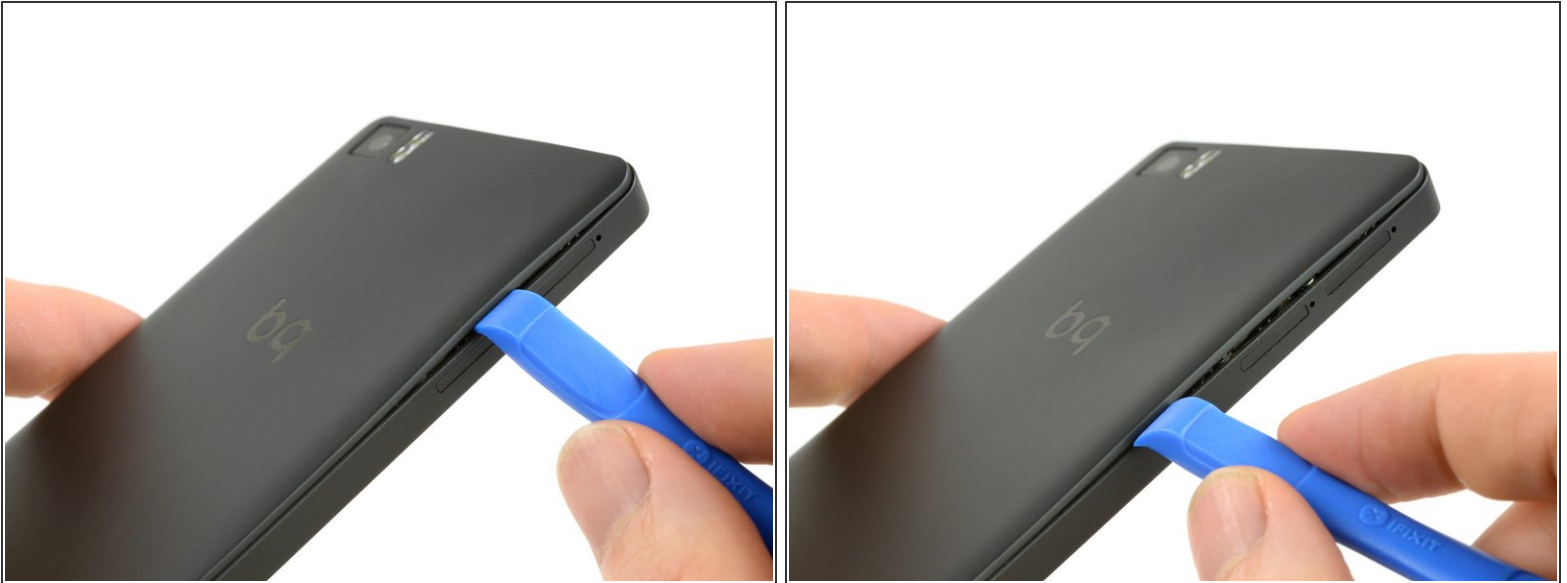
Use this guide to replace the mainboard of your bq Aquaris M5.



TOOLS:

- [Tweezers](#) (1)
 - [iFixit Opening Tools](#) (1)
 - [Spudger](#) (1)
 - [Phillips #00 Screwdriver](#) (1)
 - [SIM Card Eject Tool](#) (1)
-

Step 1 — Back Cover



- Insert the tip of an iFixit opening tool between the back cover and the mid frame of the phone.
 - ⓘ Between the 2 SIM card slots is a good place to start.
- Slide the opening tool to the bottom of the phone, to snap out the plastic clips, connecting the back cover and mid frame.


Step 2



- Slide the opening tool back to the top of the phone, to disconnect all the clips on the edge.
- Slide around the corner and along the top edge, to also disconnect these clips.

Step 3



 Be careful not to bend the back cover too hard to prevent some of the clips breaking.

- Grab the back cover by the loosened edge.
- Gently bend and twist the flexible back cover a bit to disconnect the remaining clips.
- Take off the back cover.

Step 4 — Battery



ⓘ Damaging the liquid indicator sticker, on the middle most screw, will void the warranty of the phone.

- Unscrew the ten black 4mm Phillips #00 Screws from the mainboard shield.
- Unscrew the golden 3.4mm Phillips #00 screw on the middle-right side of the mainboard shield.

Step 5



- Insert the flat side of a spudger between the mainboard shield and the frame of the phone.
- Twist the spudger to lift up the mainboard shield.
- Remove the mainboard shield from the phone.


Step 6



- Use a spudger to disconnect the battery's flex cable from the mainboard.
- Pull of the sticker on the bottom side of the battery.
- Grab the sticker and lift it up to take the battery out of the phone.

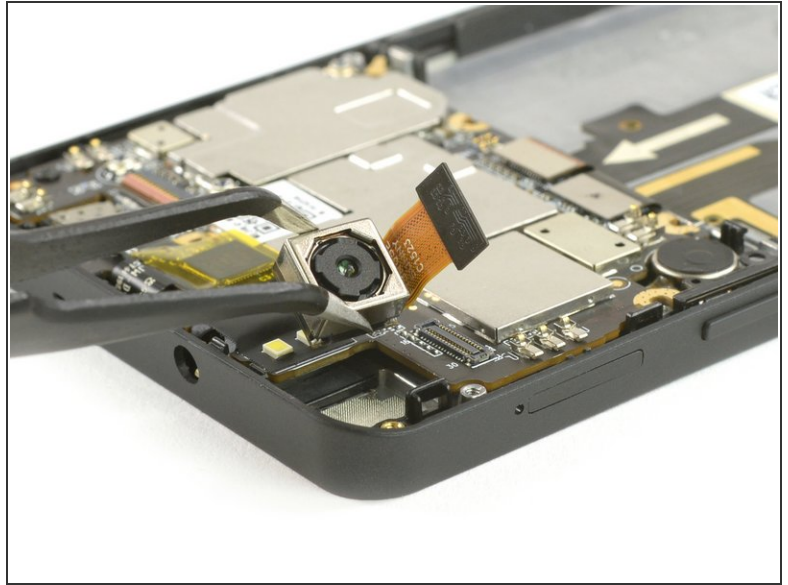
Step 7 — Front Camera



 FPC Connectors can break easily, be very careful.

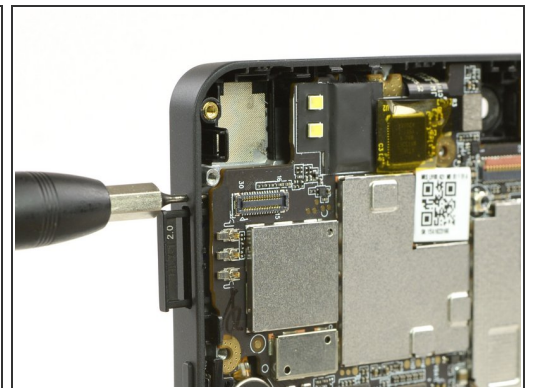
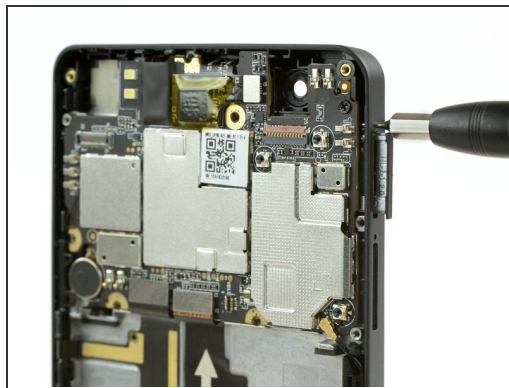
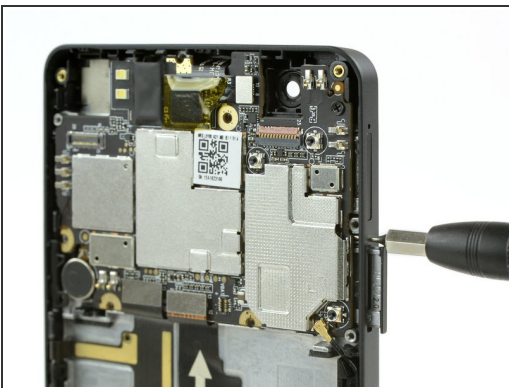
- Use an opening tool or your finger nail to open the FPC connector.
- Disconnect the FPC connector cable.
- Use the tip of a spudger to leverage the camera out of its housing.
- Remove the front camera.

Step 8 — Rear Camera



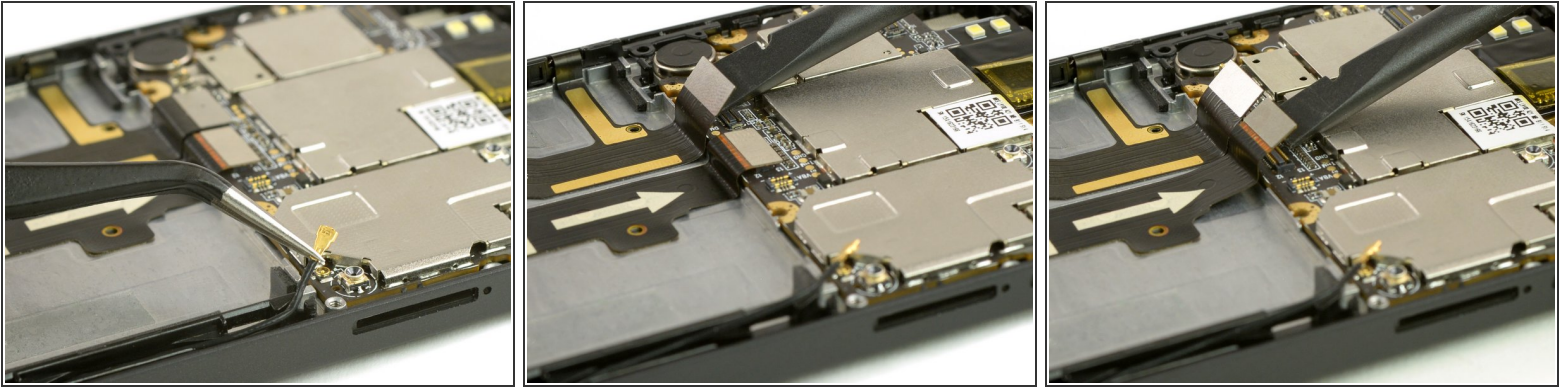
- Use the flat side of a spudger to disconnect the camera's flex cable.
- Use Tweezers to grab the camera and lift it out of the phone.

Step 9 — Mainboard



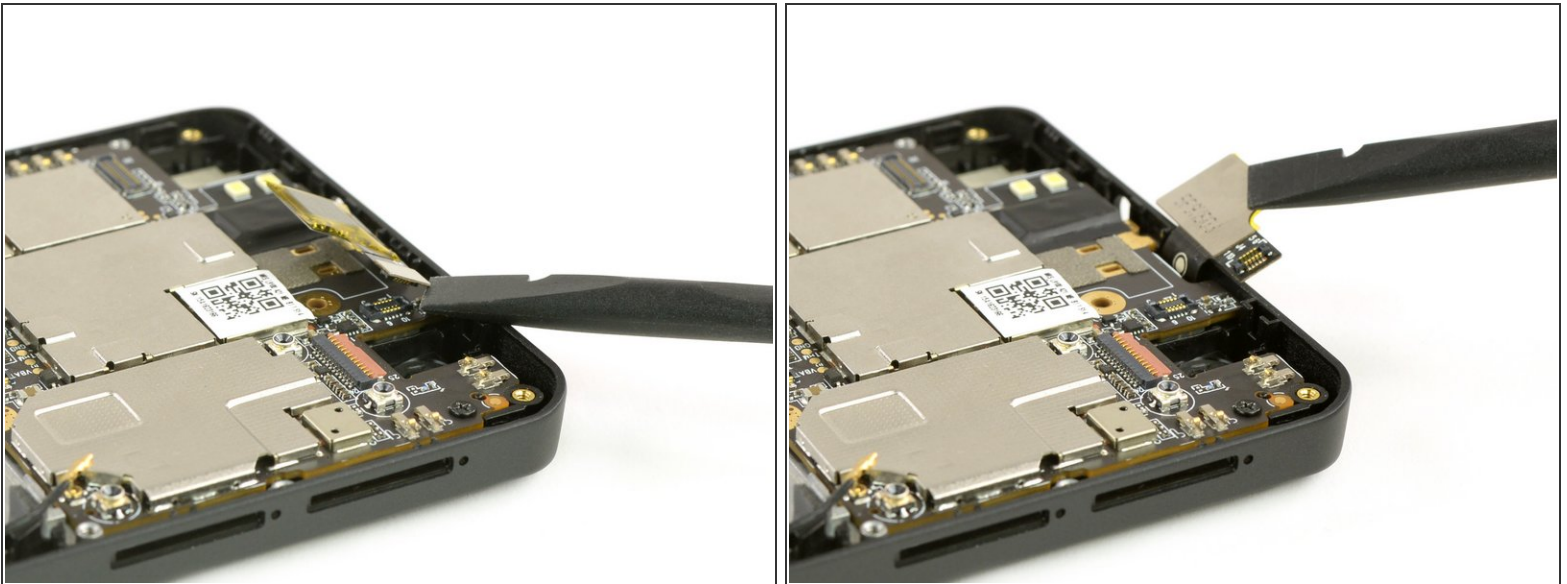
- Use a SIM card eject tool, to eject the two SIM card slots on one side.
- Use a SIM card eject tool, to eject the micro SD card slot on the other side.

Step 10



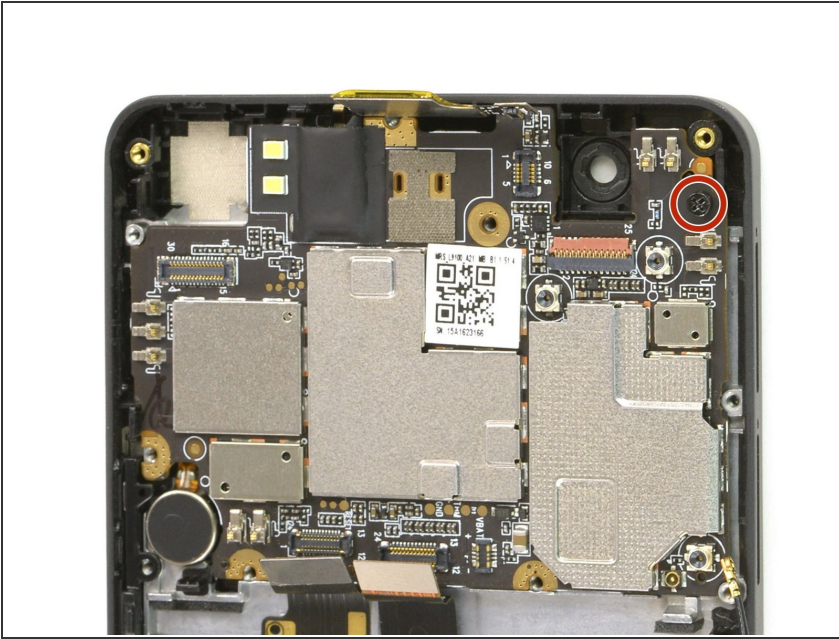
- Use tweezers to unplug the antenna cable in the bottom right of the mainboard.
- Use a spudger to disconnect the two flex cables at the bottom of the mainboard.

Step 11



- Use the flat end of a spudger to disconnect the flex cable at the top of your the mainboard.
- Bend the cable a bit over the edge, so it won't block the mainboard later, when you are taking it out.

Step 12



- Take out the 4mm Phillips #00 screw, holding the mainboard to the frame.

Step 13



- Insert the flat end of a spudger between the mainboard and the mid frame.
 - ❗ The best spot is on the right side next to the two SIM card slots.
- Use the spudger to lever the mainboard.
- Take the mainboard out of the phone.

To reassemble your device, follow these instructions in reverse order.