



Yamaha DM1000 Faders Replacement

Motorized faders replacement included transistor.

Written By: F. Jeanneret



INTRODUCTION

Open the console and replacing the faders, step by step. This job need soldering skills an couple of hour.



TOOLS:

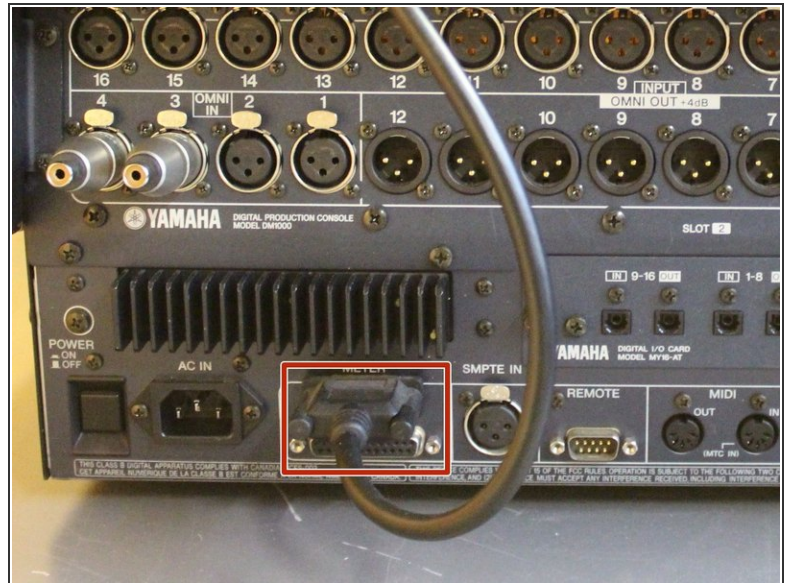
- [4mm Phillips Screwdriver](#) (1)
 - [Soldering Workstation](#) (1)
 - [New Item](#) (1)
-

Step 1 — Remove wood panels (Assuming you have it)



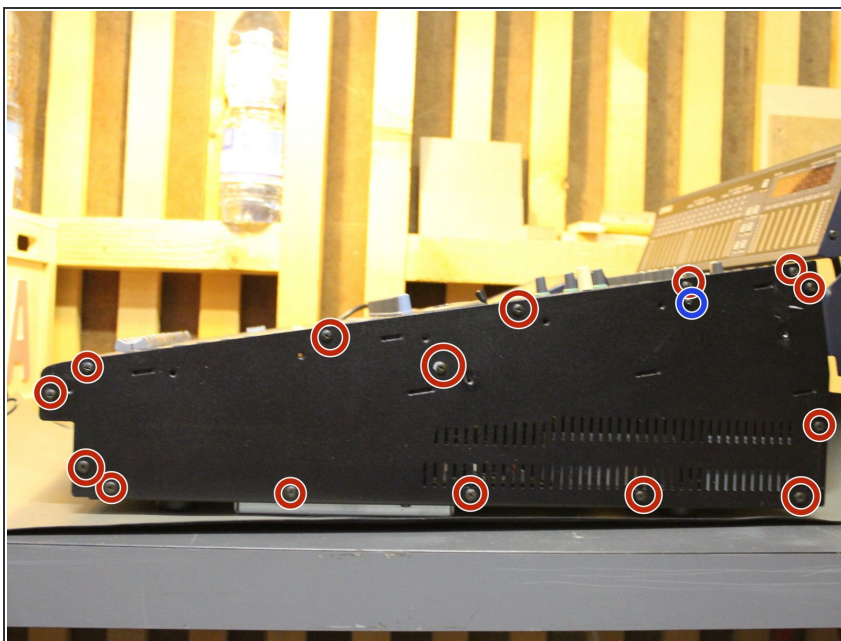
- Remove 5 screws:
- Three screws for the lower part
- Two screws for the upper part
- Use a #4 Phillips screwdriver.

Step 2 — Remove meter (if you have one)



- Remove sub-d connector from bargraph.
- Remove 4 screws (2shorts/2 long) from metal bracket and mixing desk.

Step 3 — Remove side panels



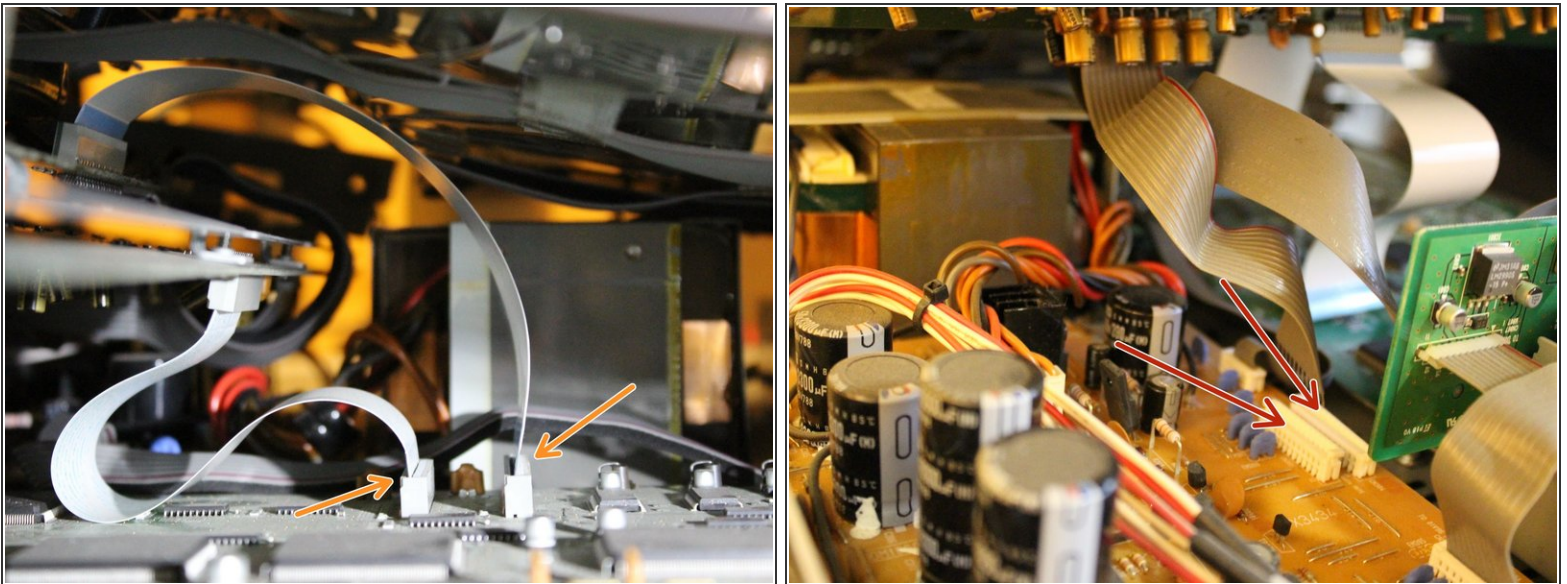
- Remove 15 screws:
- Remove 1 smaller screw
- remove Phillip screw #2
- Attention: these are self-tapping screws => risk of creating chips when screwing.

Step 4 — Remove fader button + front & back screws



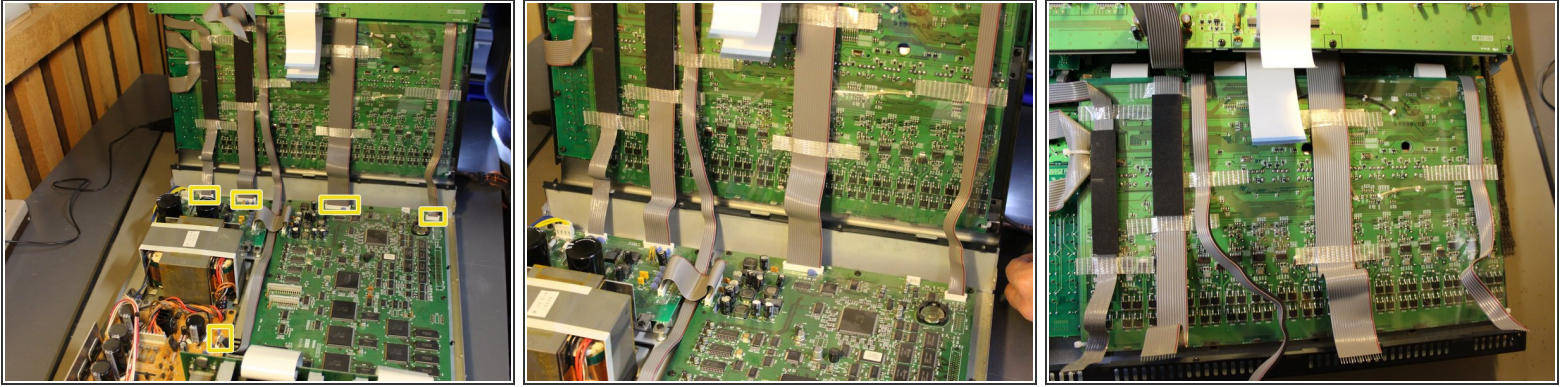
- remove 16 + 1 fader with fingers or a with a plastic card.
- remove 4 screws at the back.
- remove 4 screws at the front (bad pic here).

Step 5 — Remove 4 cables before opening



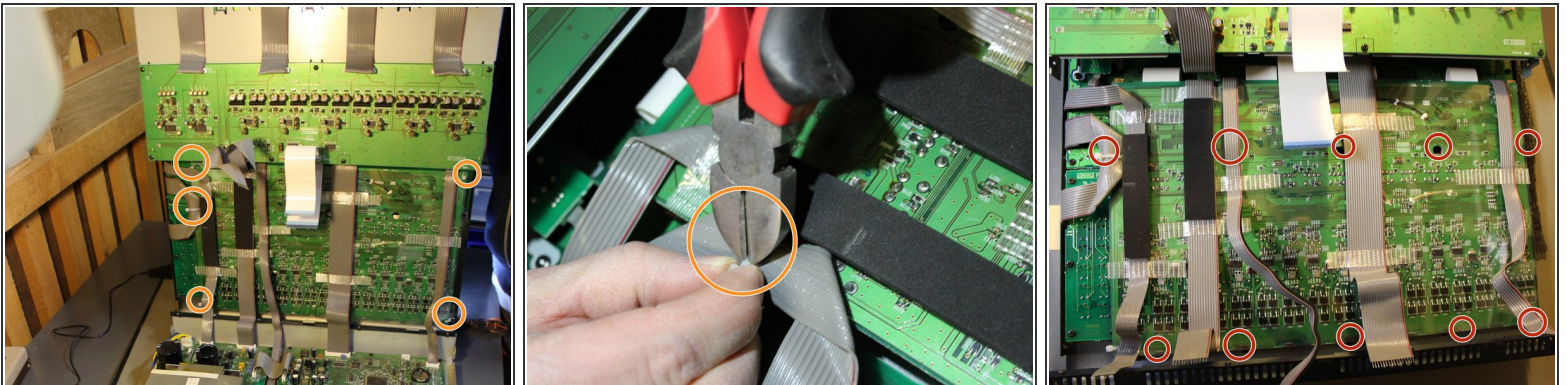
- remove carrefully from the side the 2 withe connectors.
- remove carrefully 2 cables from the power unit, unlock first the connector.

Step 6 — Opening the console



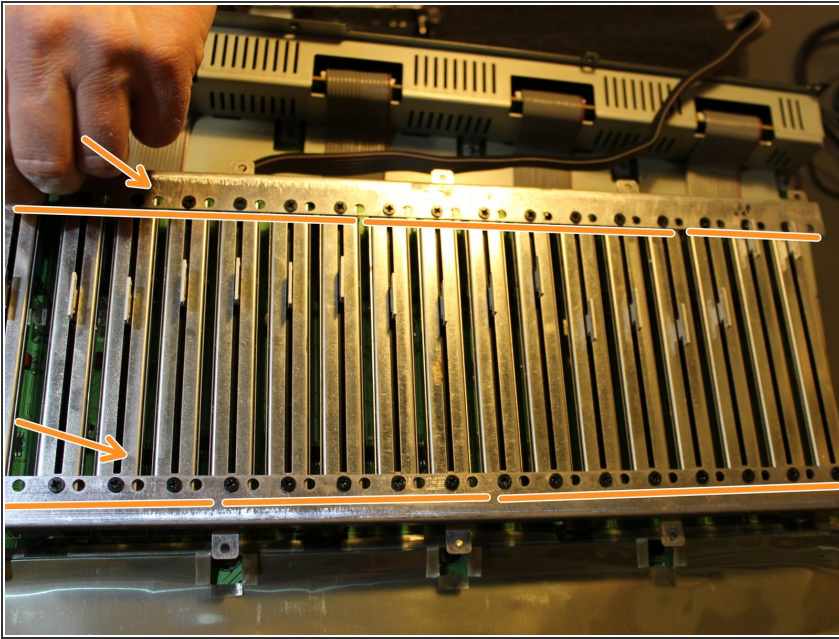
- open carefully the console from back to front by graping the sides.
- open connectors and remove 5 cables.
- you can now remove the upper part of the console.

Step 7 — Removing the circuit board



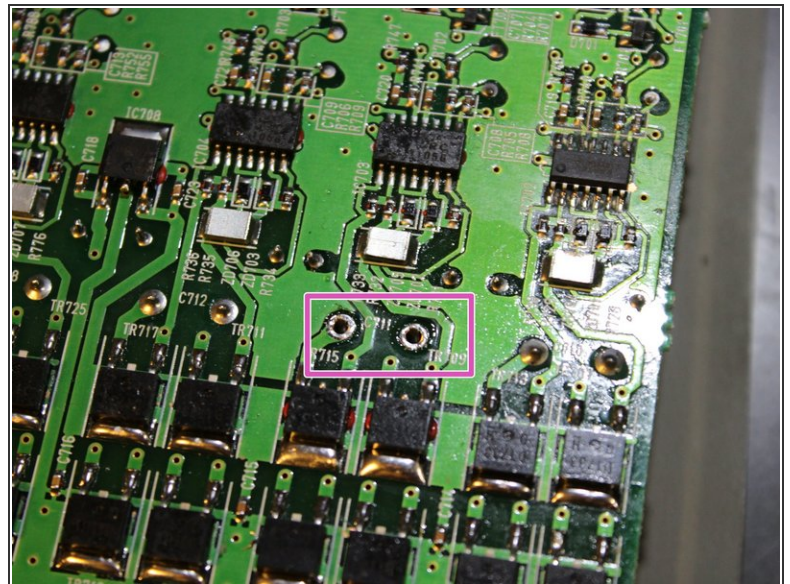
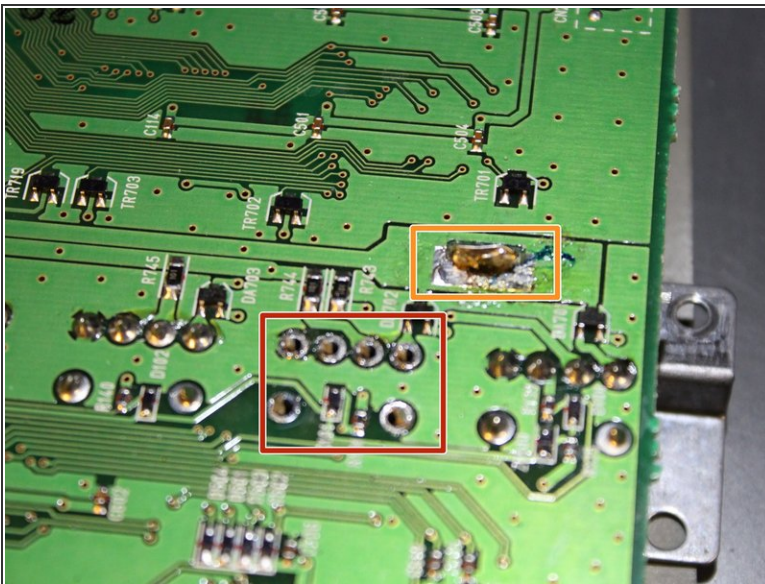
- Cut the plastic clamps. Their are 4 clamps in the corners and 1 clamp holding flat cable in place.
- Unscrew the 10 screws with a Phillips #2 screwdriver.

Step 8 — Removing Fader cover



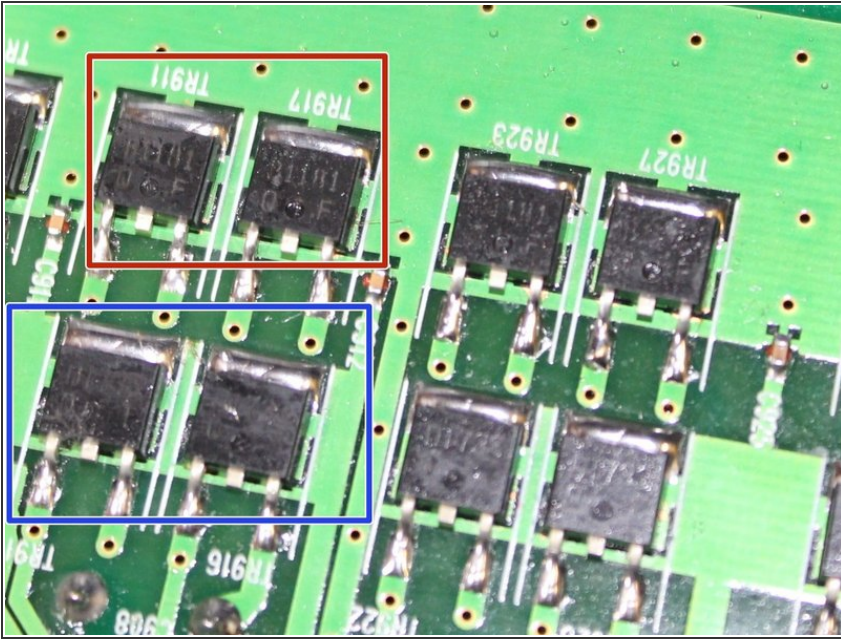
- For each fader remove the 2 black screws with a philips #2.

Step 9 — Remove cover + fader



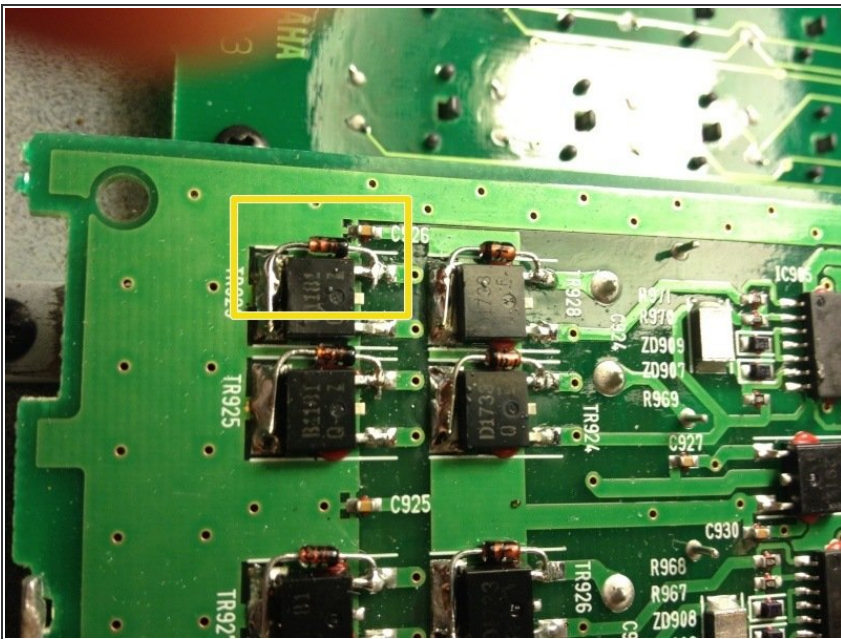
- remove solder from 4 metal bracket that are fixed to the PCB from the cover.
- remove solder with a pump from 6 pin of the fader.
- remove solder from the 2 pin of the motor of the fader.

Step 10 — Replace transistors



- Replace transistors by new ones.
- 2SB1181.
- 2SD1733.
- they are hard to find as the are being obsolete.

Step 11 — Add more reliability



- *An idea from web forum from a Yamaha Technician that propose to add 4X 1N4148 diode by fader to protect the transistor. as free wheel.*
- add diode between base and collector as show here.

To reassemble your device follow the following instructions in reverse order.