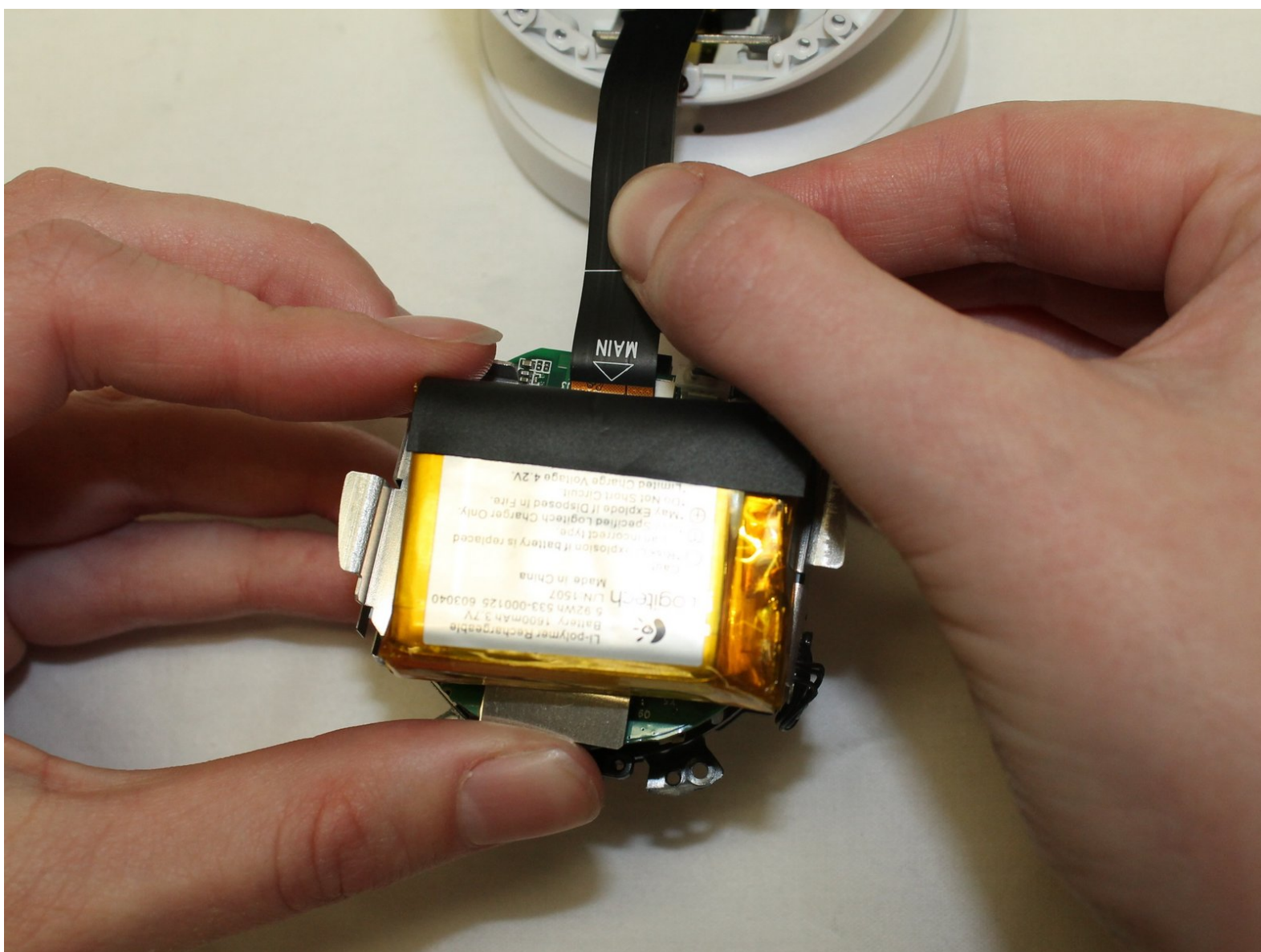




Logitech Circle Ribbon Cable Replacement

Has the ball separated from its mount and torn the flexible ribbon cable? Use this guide to replace the ribbon cable in your Logitech Circle.

Written By: Haley Williams



INTRODUCTION

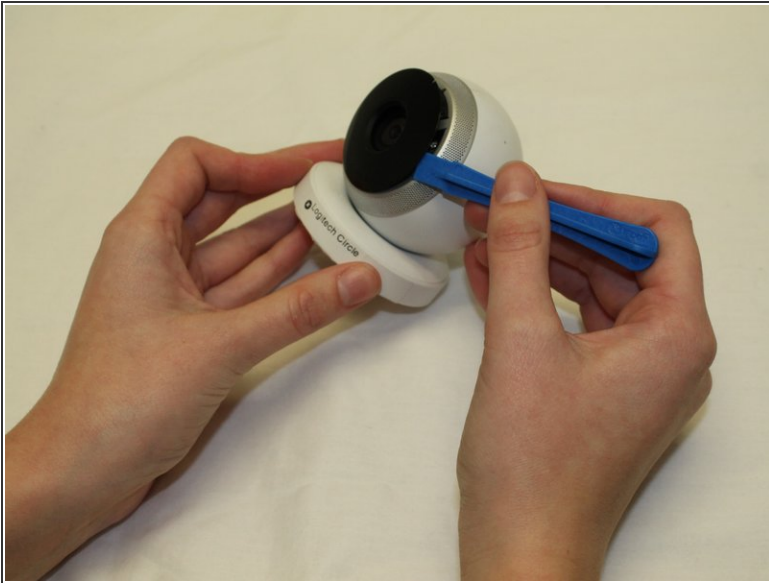
This guide will allow you to remove and replace the ribbon inside of the Logitech Circle. This guide is a bit more involved, as there are several screws that need to be removed and you will need to puncture the base of the Logitech in order to remove the cable. Be sure to keep the screws organized for easier reconstruction.



TOOLS:

- [Phillips #0 Screwdriver](#) (1)
 - [iFixit Opening Tools](#) (1)
-

Step 1 — Ribbon Cable



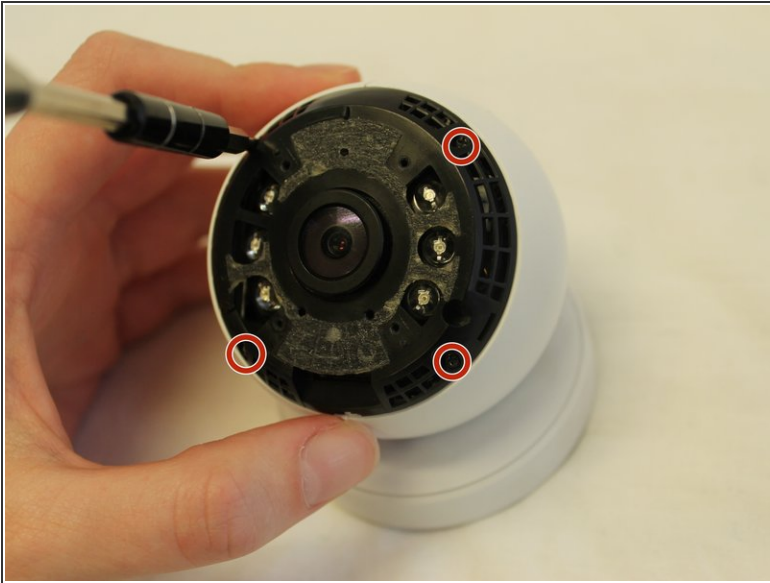
- Wedge the plastic opening tool under the black circle lens and gently pry it off.
- ⓘ The lens is only attached with sticky tape and should remove relatively easily.

Step 2



- Remove the four 3mm Phillips #0 screws that hold down the first ring.

Step 3



- Remove the four 3mm Phillips #0 screws that hold down the second ring.

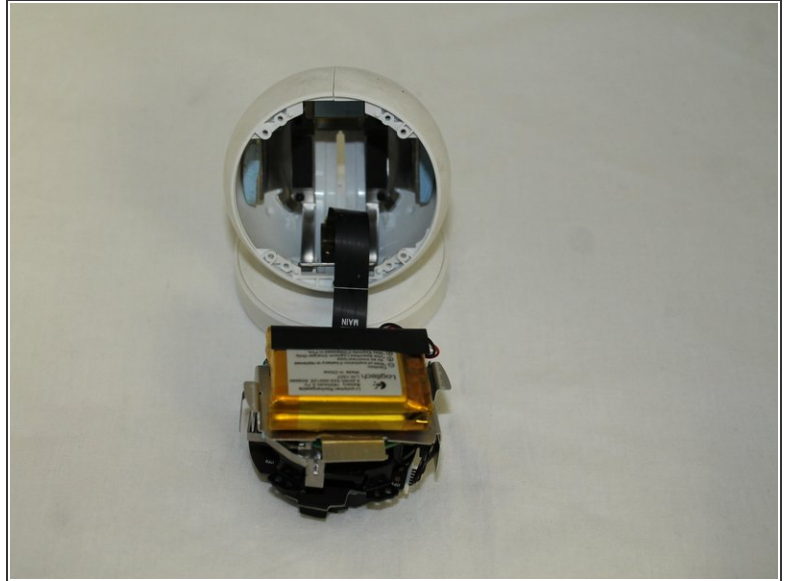
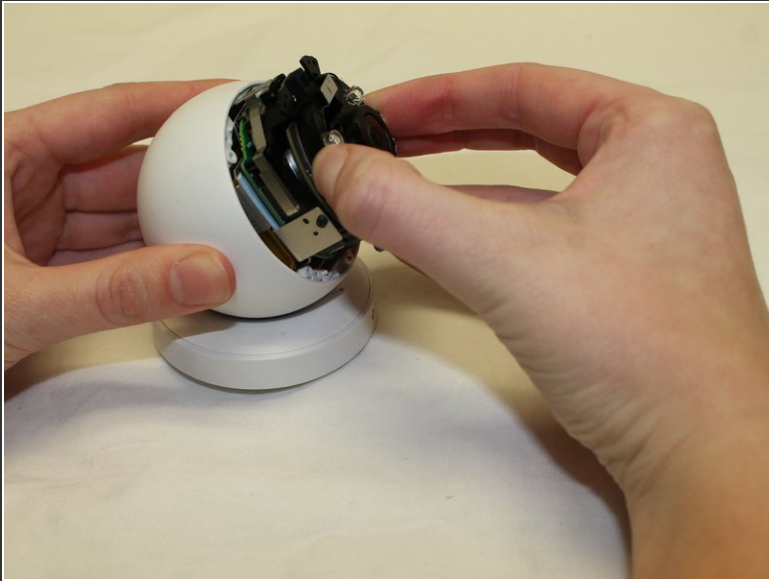
Step 4



- Remove the four 3mm Phillips #0 screws that hold down the final ring. Do not remove the lens/battery bundle yet.

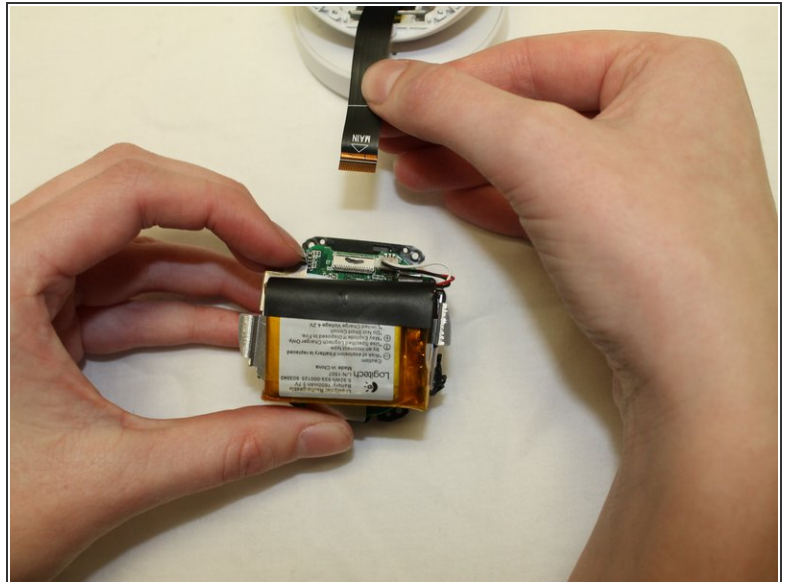
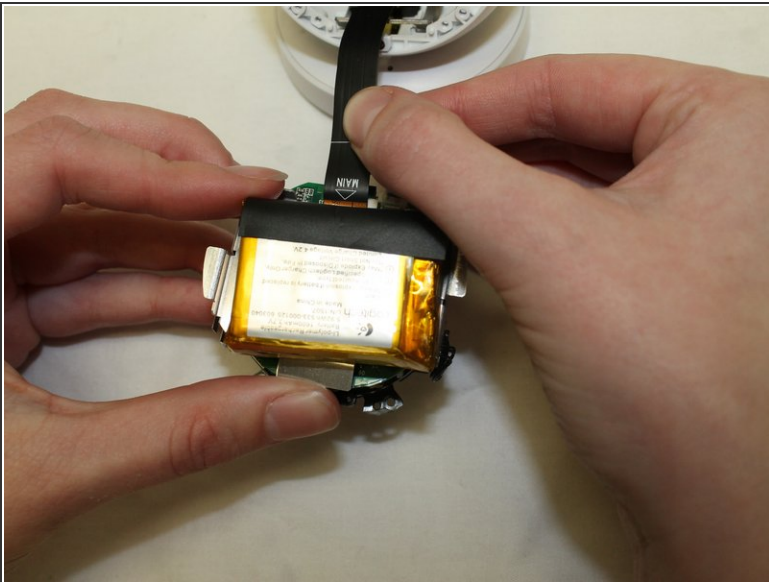
⚠ The lens/battery bundle is attached to the base by a ribbon cable that can break, so be very careful handling the circle.

Step 5



- Gently remove the lens/battery bundle from the base of the circle, being mindful of the ribbon cable.

Step 6



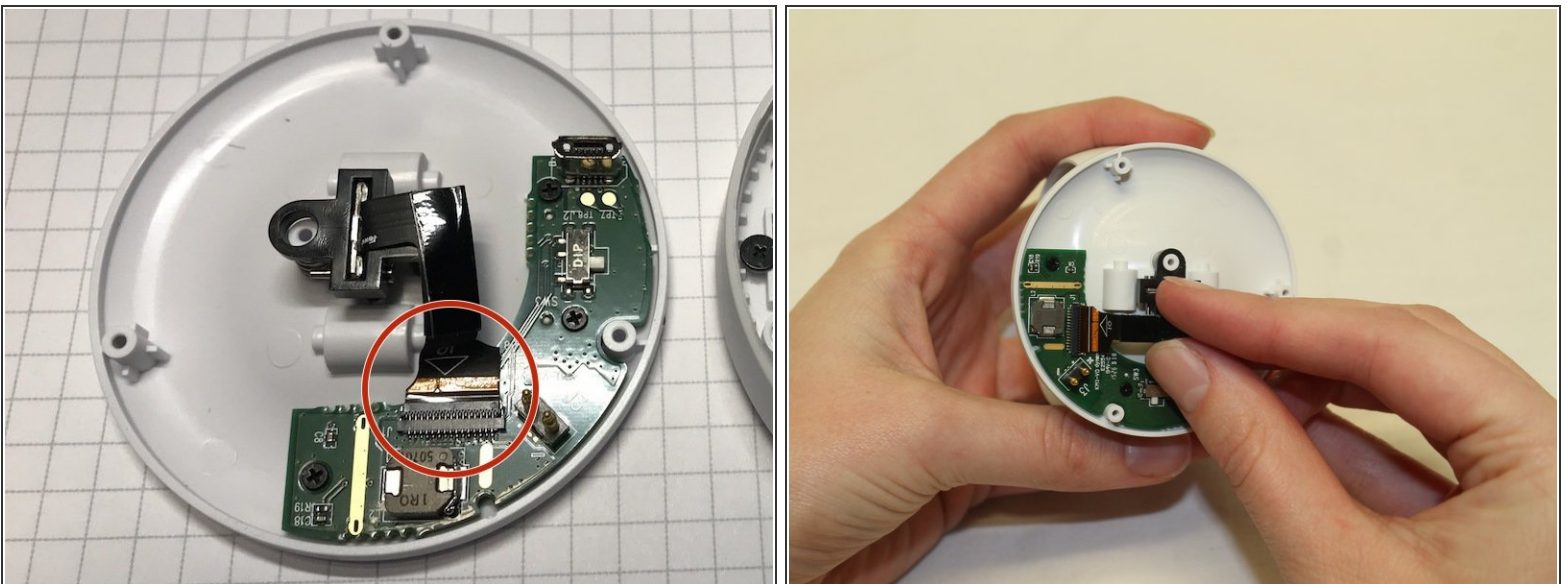
- Gently pull the ribbon cable loose from the lens/battery bundle.
- ⓘ While this is not an entirely necessary step, it helps to ensure the ribbon cable will not break during the rest of the replacement.

Step 7



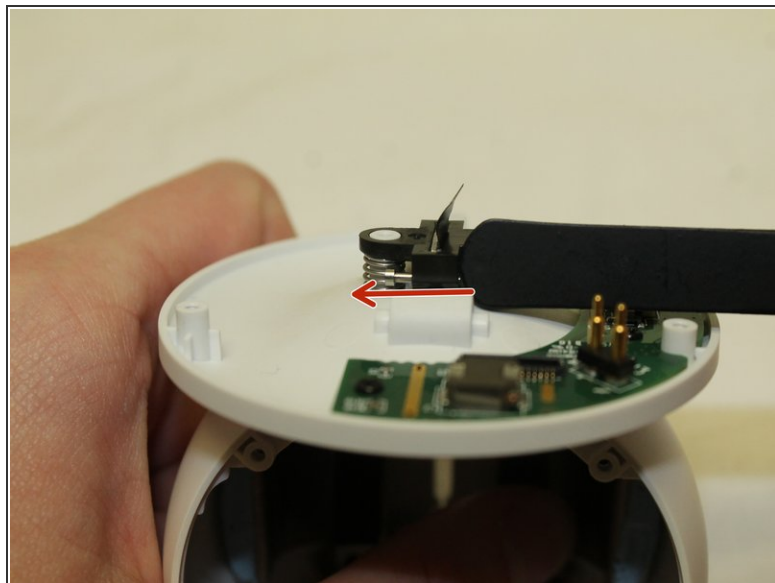
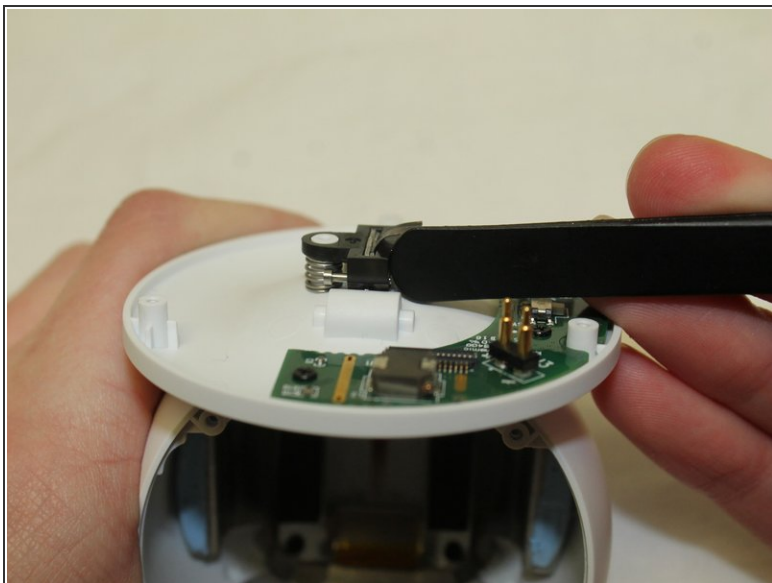
- Once the old ribbon cable has been detached from the lens/battery bundle it's time to release the other side from the base.
- Locate the screws holding the base together by feeling for the soft spots underneath the manufacturer's sticker. Punch through with your screwdriver and remove the three 3mm Phillips #0 screws.
- The two pieces of the base can now be easily pulled apart.

Step 8



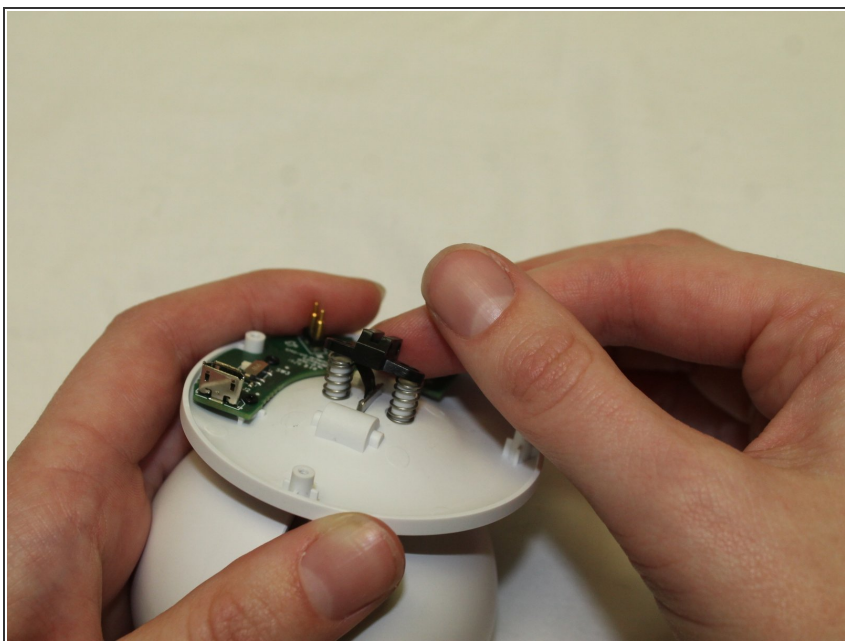
- Gently pull the ribbon cable loose from its connection to the base.

Step 9



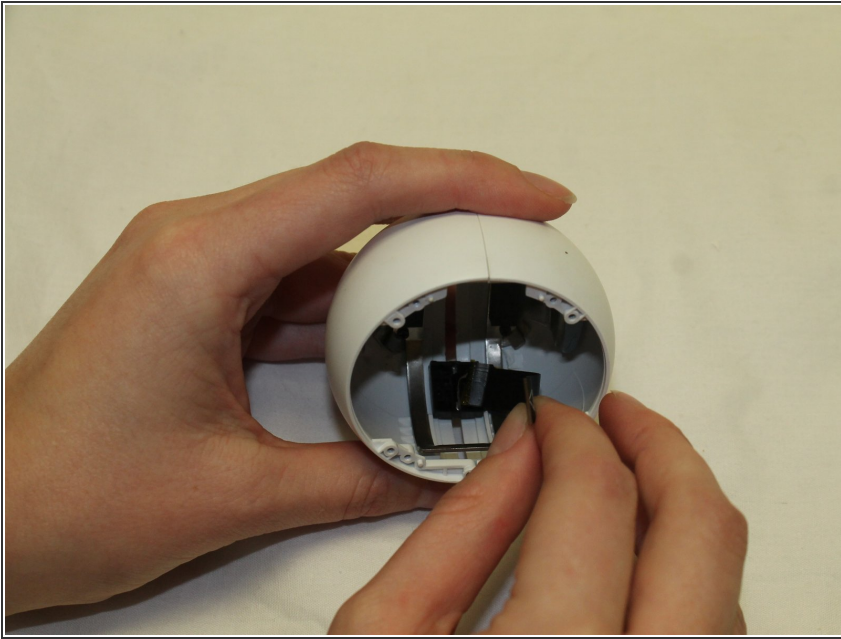
- Slide the push pin holding the plastic connector/ribbon cable in place out on both sides.

Step 10



- Remove the black plastic connector and the two springs from the base of the device.

Step 11



- Reach inside the circle and pull the ribbon cable free from the device.

To reassemble your device, follow these instructions in reverse order.