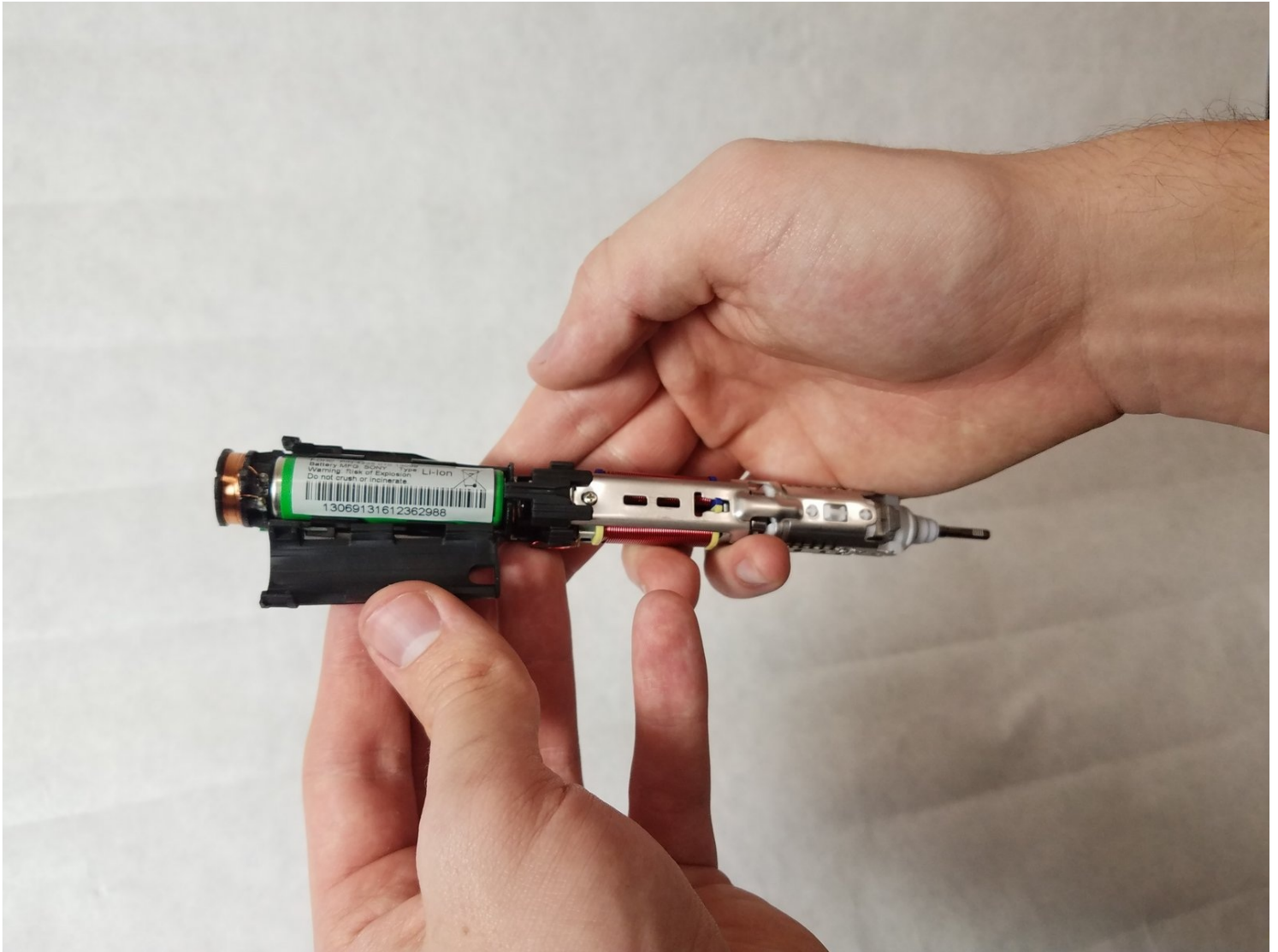




Philips Sonicare DiamondClean Battery Replacement

Written By: Zachary Bertrand



TOOLS:

Spudger (1)
Soldering Iron 60w Hakko 503F (1)
Desoldering Braid (1)
Lead-Free Solder (1)

PARTS:

Sonicare Flexcare/Flexcare+/Healthy
White/DiamondClean Battery (1)

Step 1 — Case Replacement



- Pull the head from toothbrush.

Step 2



- Use a nylon spudger to pry the chrome cap at the bottom off.

Step 3



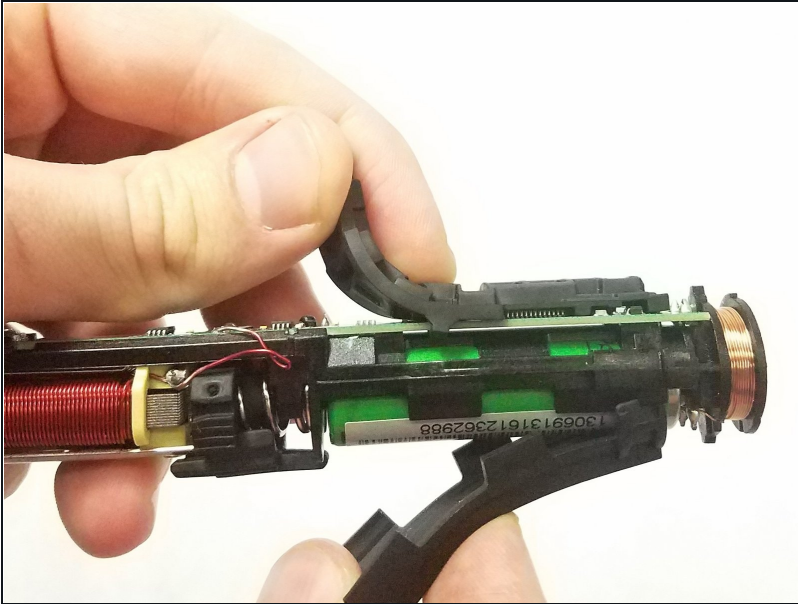
- Use a nylon spudger to release the black tabs on either side of internals.

Step 4



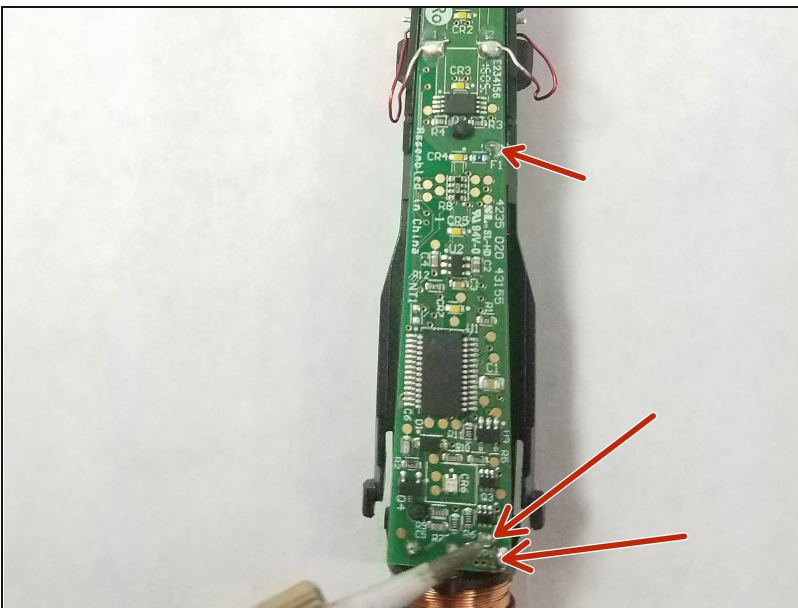
- Put the metal head on a solid surface with handle perpendicular to the surface. Firmly, yet gently, push down until the internals start to slide out.

Step 5 — Battery



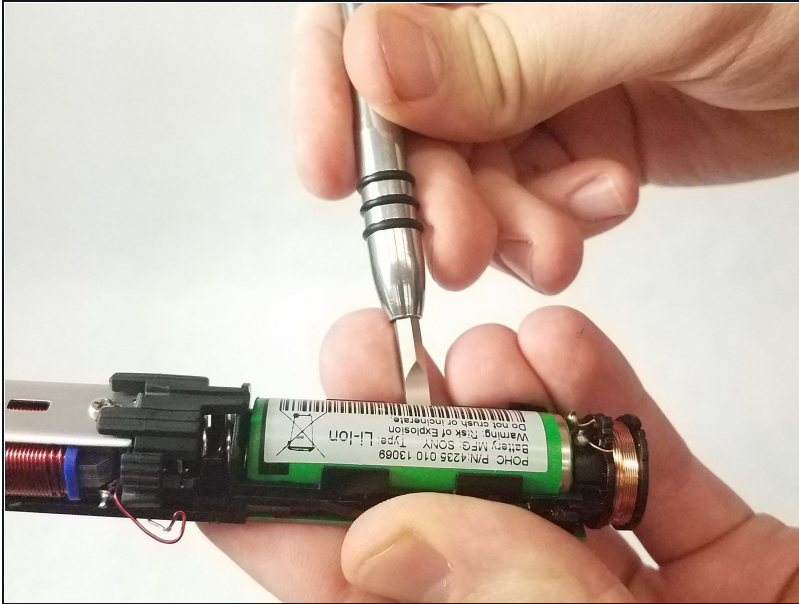
- Remove rubber covers from the top of the motherboard and the back of the battery.

Step 6



- Using a soldering iron, remove the solder from the three marked spots.
- The pins are labeled "F1", "R6", "JP1"

Step 7



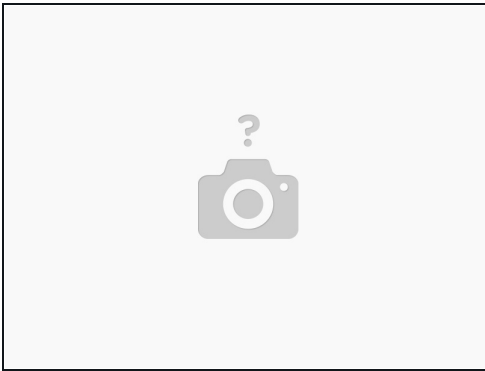
- After de-soldering, the battery should be loose. If this is not the case, spend more time removing the solder.
- When the battery comes loose, gently wiggle it out and away from the device.

Step 8



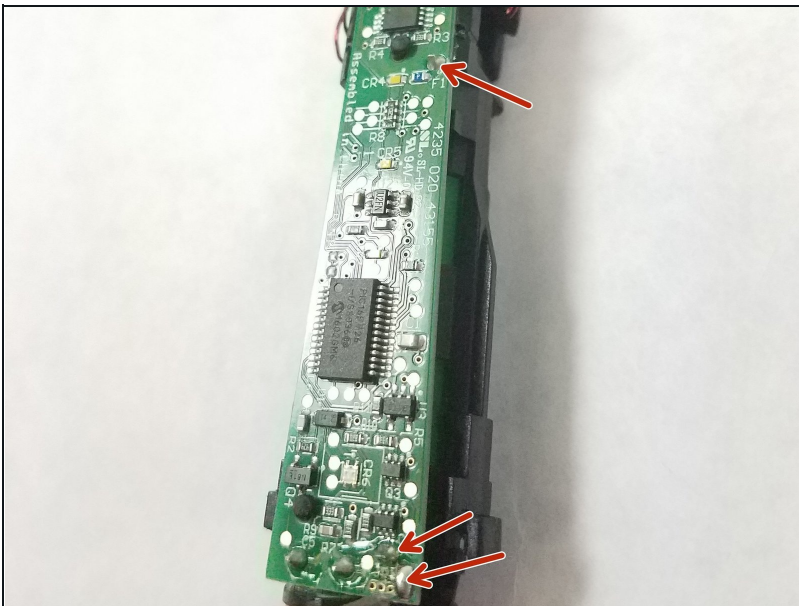
- Carefully reinsert the new battery into the same spot as the old one. Gently press until it is firmly pressed against the toothbrush.

Step 9



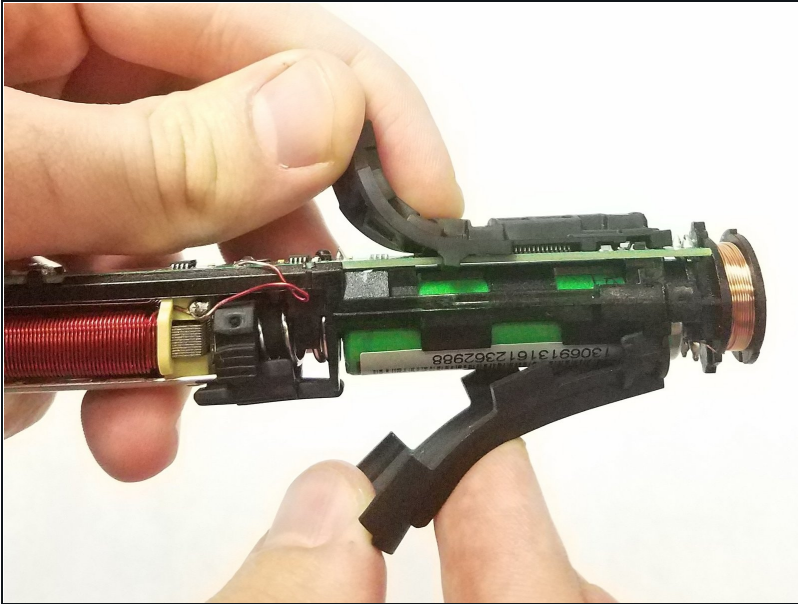
- Green batteries have a black horizontal stripe at the top on the green wrap. That is the positive terminal that goes towards the top of the unit

Step 10



- Apply a small amount of solder to the three points shown to attach the battery.
- The pins are labeled "F1", "R6", "JP1"

Step 11



- Replace the rubber covers on the motherboard and battery.
- Reverse the case replacement guide to finish putting the toothbrush back together.

To reassemble your device, follow these instructions in reverse order.