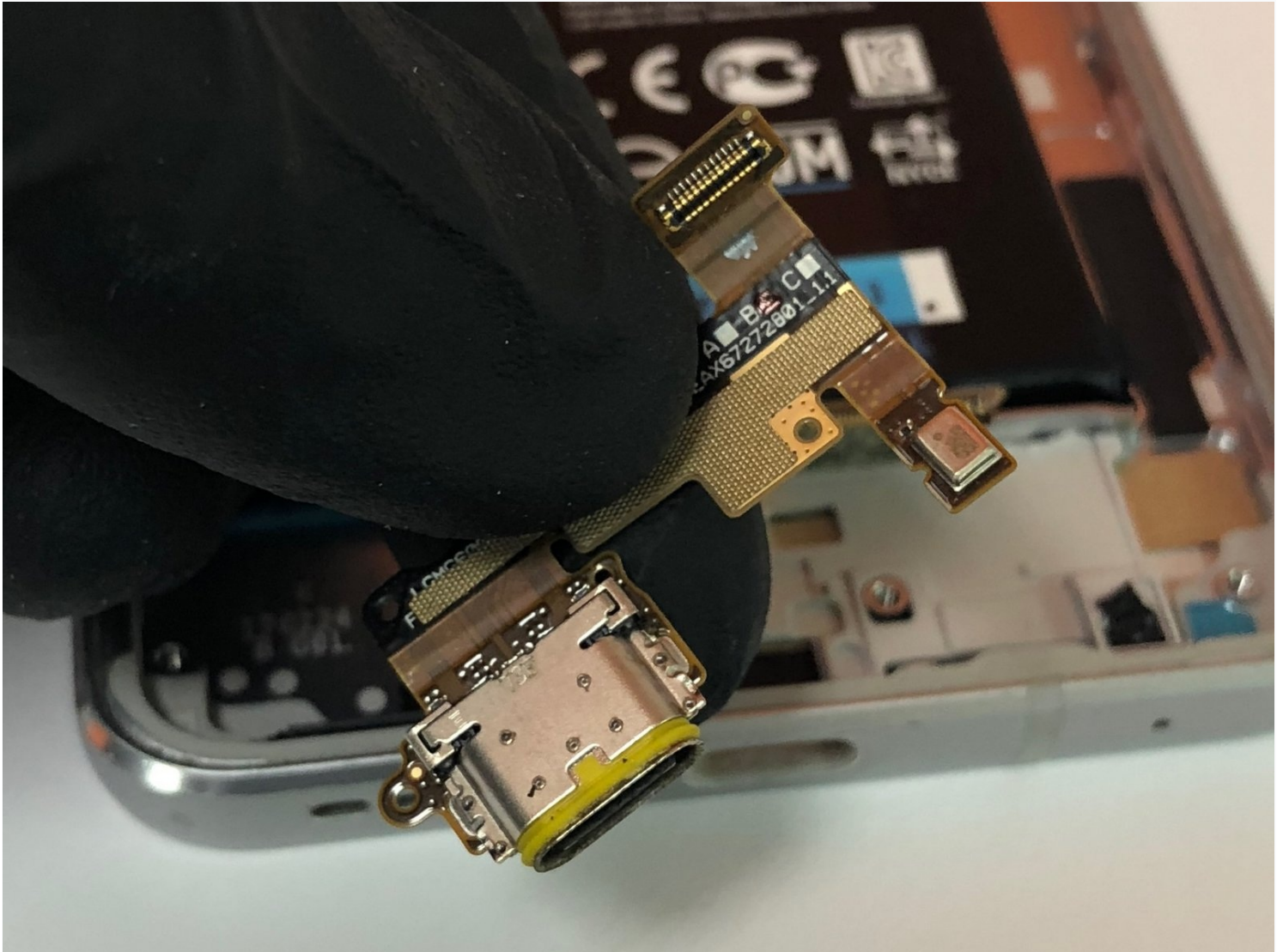




# LG G6 Charge Port Replacement

Use this guide to replace the charge port on a...

Written By: Kevin Stuckey



# INTRODUCTION

Use this guide to replace the charge port on a LG G6. If you're having charging issues or your microphone isn't working, replacing the charge port is a good place to start.

## TOOLS:



[Halberd Spudger](#) (1)  
[iOpener](#) (1)  
[Spudger](#) (1)  
[iFixit Opening Picks \(Set of 6\)](#) (1)  
[Tweezers](#) (1)  
[Phillips #00 Screwdriver](#) (1)  
[Suction Handle](#) (1)

## PARTS:

[LG G6 Rear Glass Panel](#) (1)  
[Tesa 61395 Double-Sided Tape](#) (1)  
*Thin, high-bond tape is required if the replacement part does not come with adhesive.*  
[LG G6 Charge Port](#) (1)

## Step 1 — iOpener Heating



-  We recommend that you clean your microwave before proceeding, as any nasty gunk on the bottom may end up stuck to the iOpener.
- Place the iOpener in the center of the microwave.
-  **For carousel microwaves: Make sure the plate spins freely. If your iOpener gets stuck, it may overheat and burn.**

## Step 2



- Heat the iOpener for **thirty seconds**.
- Throughout the repair procedure, as the iOpener cools, reheat it in the microwave for an additional thirty seconds at a time.

⚠ Be careful not to overheat the iOpener during the repair. Overheating may cause the iOpener to burst. Do not attempt to heat over 100°C (212°F).

⚠ Never touch the iOpener if it appears swollen.

⚠ If the iOpener is still too hot in the middle to touch, continue using it while waiting for it to cool down some more before reheating. A properly heated iOpener should stay warm for up to 10 minutes.

## Step 3



- Remove the iOpener from the microwave, holding it by one of the two flat ends to avoid the hot center.

⚠ The iOpener will be very hot, so be careful when handling it. Use an oven mitt if necessary.

## Step 4 — Alternate iOpener heating method



ⓘ If you don't have a microwave, follow this step to heat your iOpener in boiling water.

- Fill a pot or pan with enough water to fully submerge an iOpener.
  - Heat the water to a boil. **Turn off the heat.**
  - Place an iOpener into the hot water for 2-3 minutes. Make sure the iOpener is fully submerged in the water.
  - Use tongs to extract the heated iOpener from the hot water.
  - Thoroughly dry the iOpener with a towel.
- ⚠ The iOpener will be very hot, so be careful to hold it only by the end tabs.
- Your iOpener is ready for use! If you need to reheat the iOpener, heat the water to a boil, turn off the heat, and place the iOpener in the water for 2-3 minutes.



## Step 5 — Fingerprint Sensor



- Apply a heated iOpener to a long edge of the phone for about 2 minutes.
- ⓘ You may need to reheat and reapply the iOpener several times to get the phone warm enough. Follow the iOpener instructions to avoid overheating.

## Step 6



- In the following steps you will be cutting through the adhesive on the rear glass panel.
- Take note of the following areas:
  - In addition to cutting around the edge, there is extra adhesive here that should be cut.
  - Avoid sticking the spudger blade in too far here, to avoid damaging the rear button ribbon cable and chip.

## Step 7



- Once the back panel is warm to the touch, apply a suction cup as close to the heated edge of the phone as you can.
- ① The suction cup will not make a good seal on the curved portion of the glass, so avoid putting it on the very edge.
- Lift on the suction cup, and insert a halberd spudger or opening pick under the rear glass.

## Step 8



- Once you have the tool firmly inserted into the glass, [reheat](#) and reapply the iOpener to soften the adhesive.

## Step 9



- Slide the blade of a Halberd spudger along the side of the phone, separating the adhesive.

## Step 10



- Repeat the previous heating and cutting procedure for the remaining three sides of the phone.
- Leave an opening pick on each side as you continue to the next to prevent the adhesive from resealing.



## Step 11



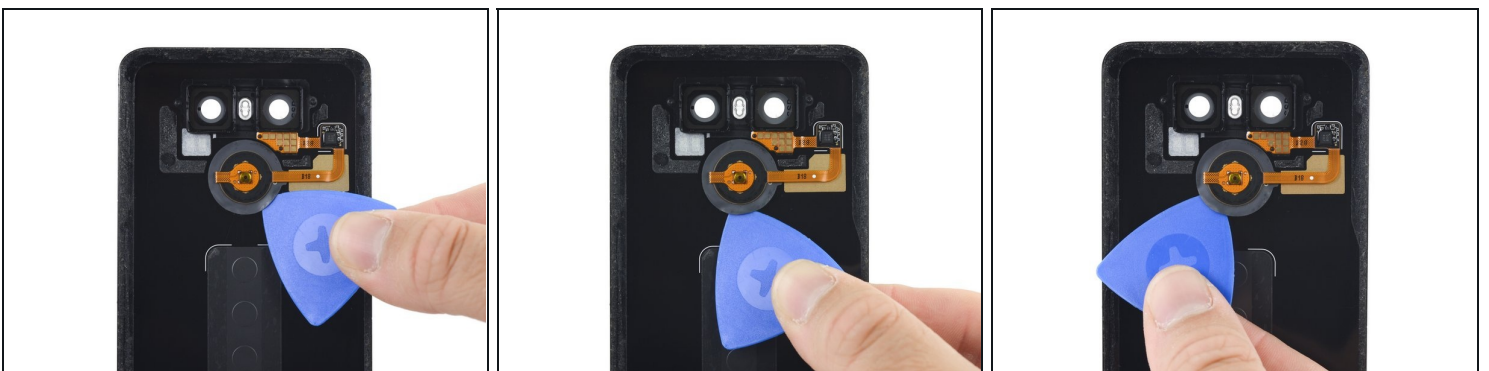
- Use the opening picks to slice through any [remaining adhesive](#) and open the phone.
- Remove the glass from the phone.
- ☑ During reassembly, apply new adhesive or high-bond tape if your replacement rear glass does not come with any.

## Step 12



- Slide the blade of a halberd spudger into the opening on the edge of the rear button bracket.  
**⚠ Careful not to push directly against the rear button ribbon cable, to avoid damaging it.**  
**⚠ Do not push the spudger in too far, to avoid damaging the rear button.**
- Continue sliding the spudger blade around the bracket to cut all the adhesive holding the bracket to the rear case.
- Remove the bracket.

## Step 13



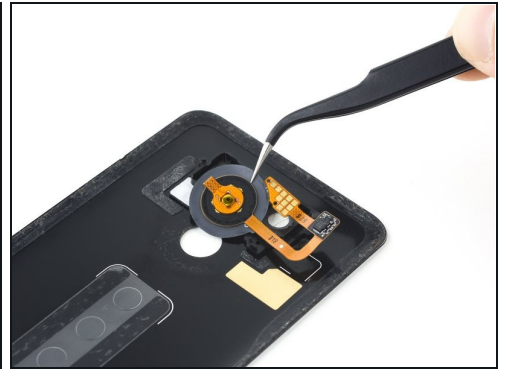
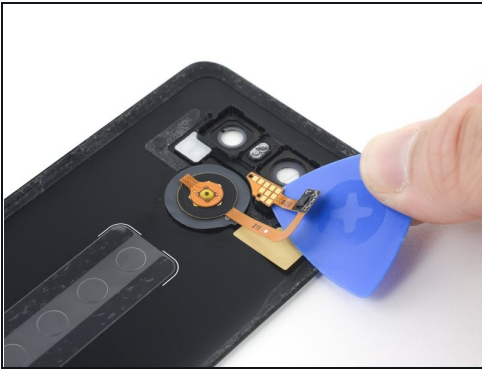
- Slide an opening pick between the rear button membrane and the rear case.
  - Slide the pick around the edge of the membrane to separate it from the rear case.
- (i)** This might take some force, as the adhesive holding the membrane to the case is tenacious. Pry slowly, to avoid puncturing or stretching the membrane.

## Step 14



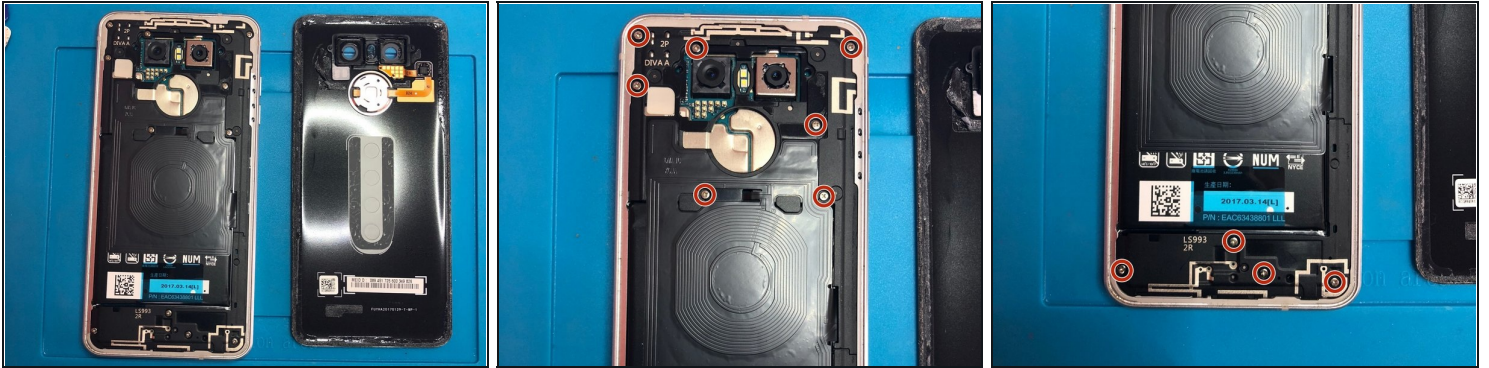
- Use the blade of a halberd spudger to pry the rear button chip off of the rear case.

## Step 15



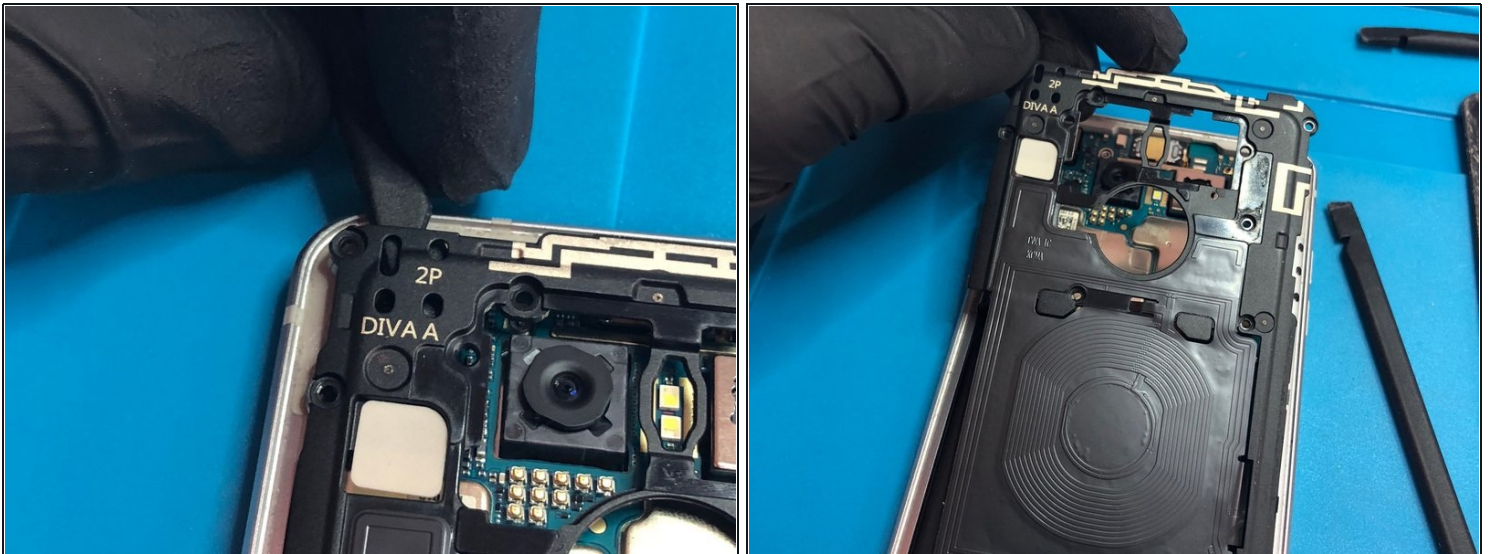
- Use an opening pick to pry the contact pad off of the rear case.
- Remove the rear button assembly.

## Step 16 — Charging Coil and Loudspeaker Assembly



- Separate the rear glass from the phone,
- Remove eleven Philips #00 screws.

## Step 17 — Remove Charging Coil



- Use a spudger to remove the charging coil from the top left corner,



## Step 18 — Remove Loudspeaker Assembly



- Remove loudspeaker assembly.

## Step 19 — Battery



- Use the flat end of a spudger to disconnect the battery connector.

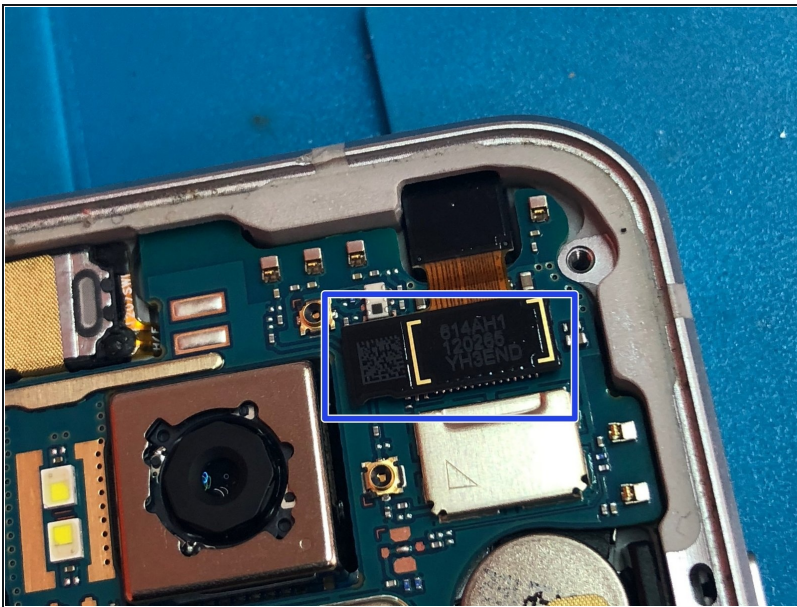


## Step 20 — Motherboard



- Use the flat end of a spudger to disconnect the LCD/Digitizer flex cable.
- Use the flat end of a spudger to disconnect the charge port flex cable.

## Step 21



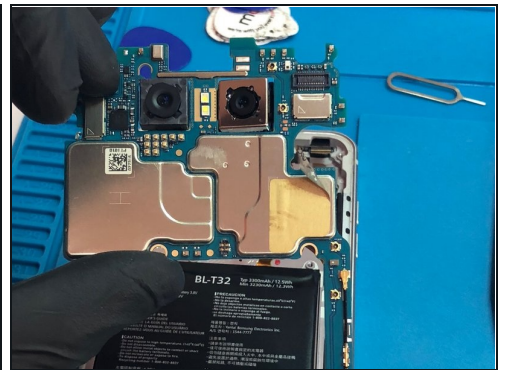
- Use the flat end of a spudger to disconnect the front camera.

## Step 22 — SIM Card Tray



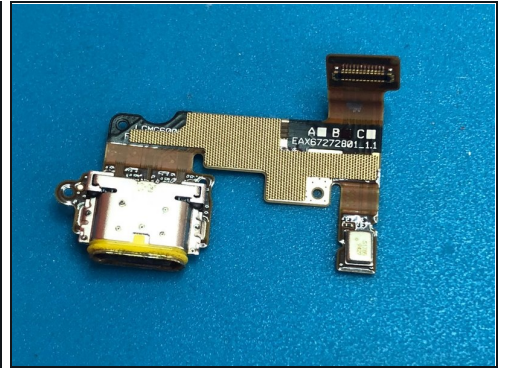
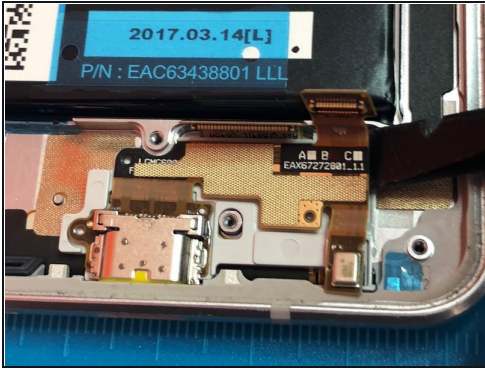
- Insert a SIM card opening tool into the small hole on the left side of the phone and remove the SIM card tray.

## Step 23



- Lift the motherboard out of the phone.
- ⓘ Be careful not to snag any of the connectors on the board.

## Step 24 — Charge Port



- Use the flat end of a spudger to remove the adhesive securing the USB-C charge port to the frame.

---

To reassemble your device, follow these instructions in reverse order.