



Shark Steam Pocket Mop Water Tank / Bladder Replacement

This guide will inform users how to replace their Shark Steam Pocket Mop's Water Tank / Bladder.

Written By: Jacob Howe



INTRODUCTION

This guide will inform users how to replace their Shark Steam Pocket Mop's Water Tank / Bladder.



TOOLS:

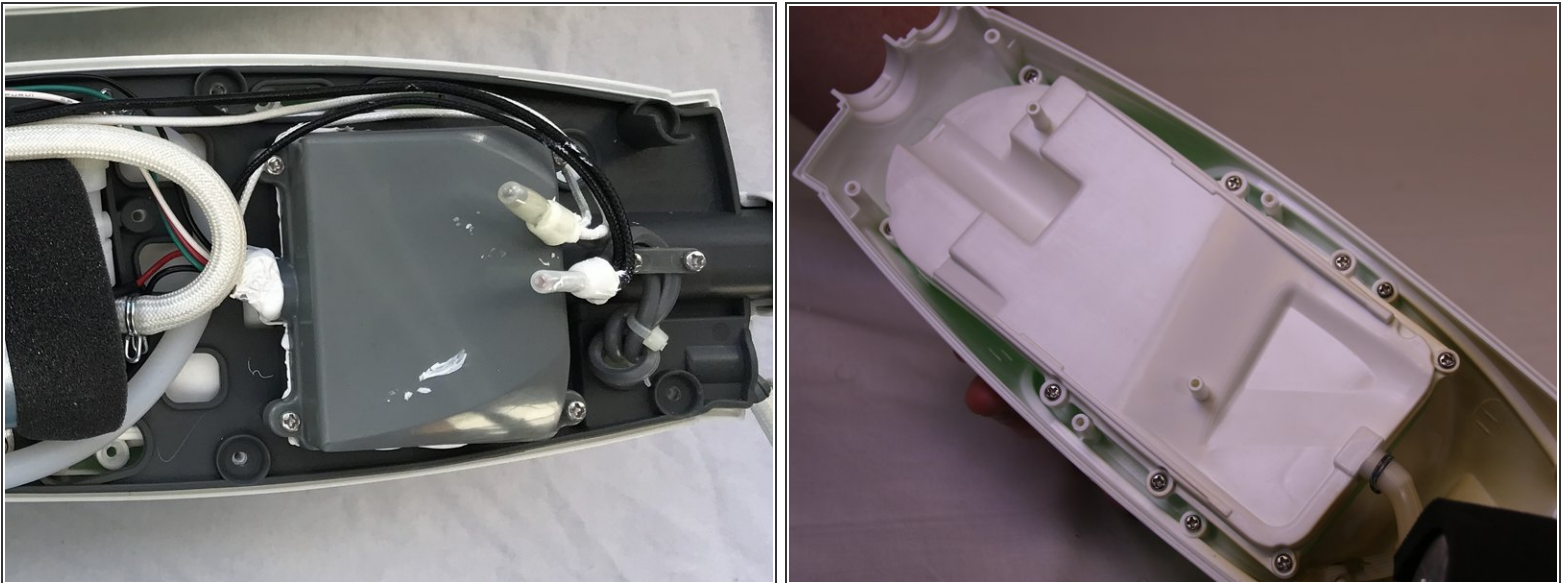
- [Phillips #0 Screwdriver](#) (1)
 - [Tweezers](#) (1)
-

Step 1 — Back Panel



- Begin by removing the 8 quarter inch phillips head screws found along the back panel
- Once all 8 screws have been removed, gently remove the back panel from the rest of the mop's body

Step 2 — Water Tank / Bladder



- Start by gently moving the midframe from the top portion of the panel to expose the bottom portion of the mop's water tank / bladder.

Step 3



- Remove the 10 quarter inch phillips head screws from the bottom portion of the water tank / bladder.
- Then gently lift the water tank / bladder out of its plastic housing. and turn it over.
- To fully remove the water tank / bladder, use your tweezers to remove the metal ring that keeps the hose fastened to the plastic tank.

To reassemble your device, follow these instructions in reverse order.