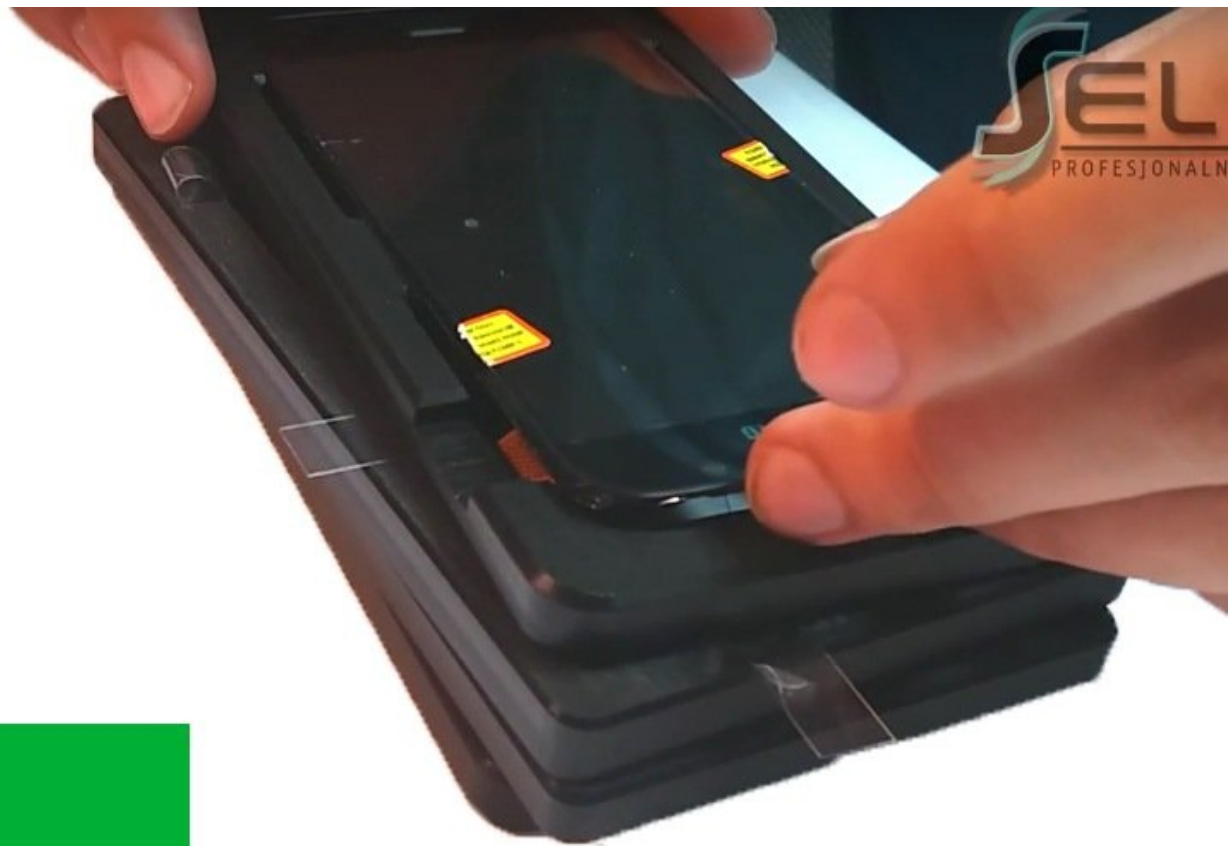




How to refurbish LCD for Samsung Galaxy S6

This video guide shows how to de-laminate and replace the glass panel for the Samsung Galaxy S6.

Written By: Jimmy Mayne



INTRODUCTION

This video guide shows how to de-laminate and replace the glass panel for the Samsung Galaxy S6.



TOOLS:

- [Pro Tech Toolkit](#) (1)
-

Step 1 — Complete LCD refurbish video



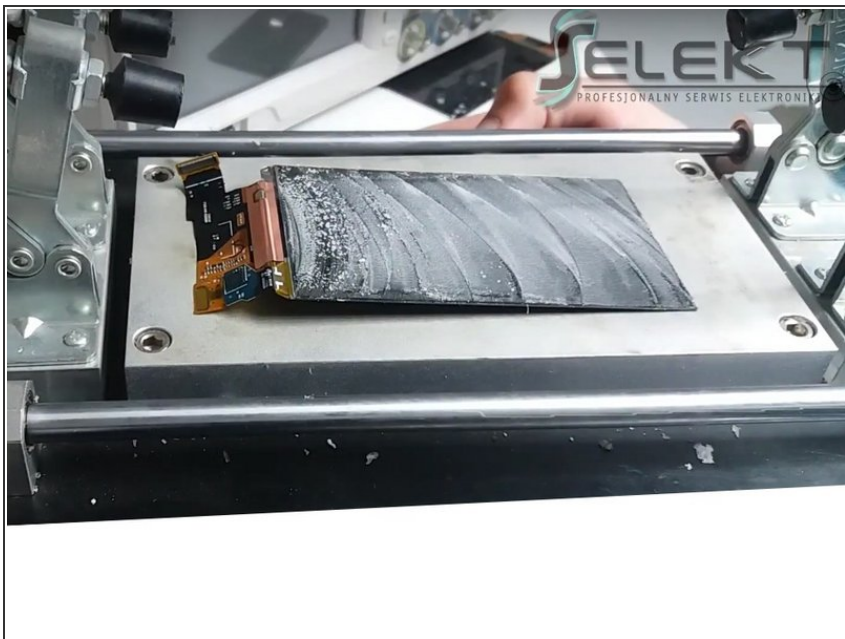
- Full video process of refurbishing LCD for Samsung Galaxy S6

Step 2 — GLASS SEPARATING



- Insert wisdom here.

Step 3 — SCRAPING THE ADHESIVE FROM THE DISPLAY



- Insert wisdom here.

Step 4 — CLEANING THE DISPLAY FROM THE DUST



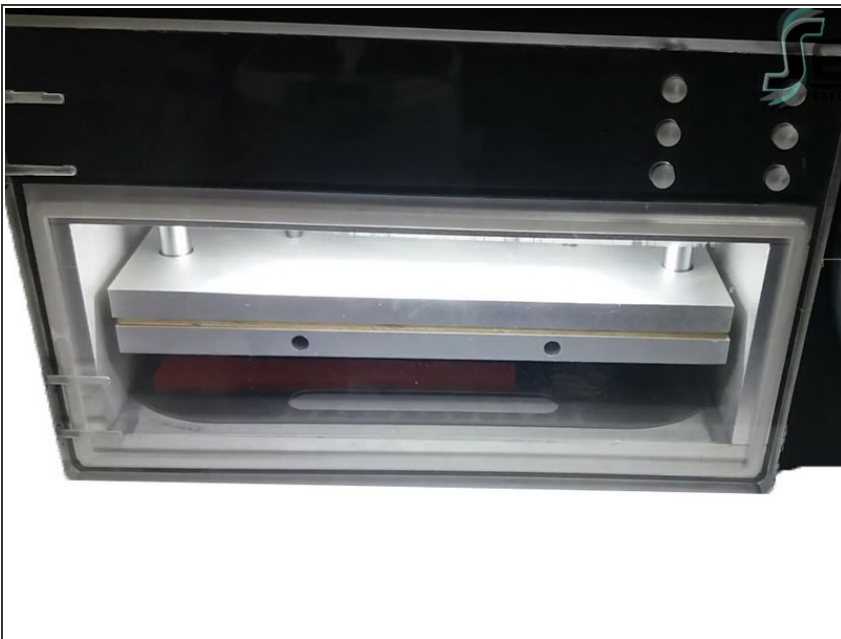
- Insert wisdom here.

Step 5 — BONDING NEW GLASS



- Insert wisdom here.

Step 6 — PRESS GLASS APPLICATION



- Insert wisdom here.

Step 7 — AIR BUBBLES REMOVAL



- Insert wisdom here.

To reassemble your device, follow these instructions in reverse order.