



HP 15-ay014dx Motherboard Replacement

This guide will show you how to safely remove...

Written By: Drake Scoville



INTRODUCTION

This guide will show you how to safely remove the motherboard from your HP 15-ay014dx laptop.

TOOLS:

[iFixit Opening Tool](#) (1)

[Spudger](#) (1)

[Tweezers](#) (1)

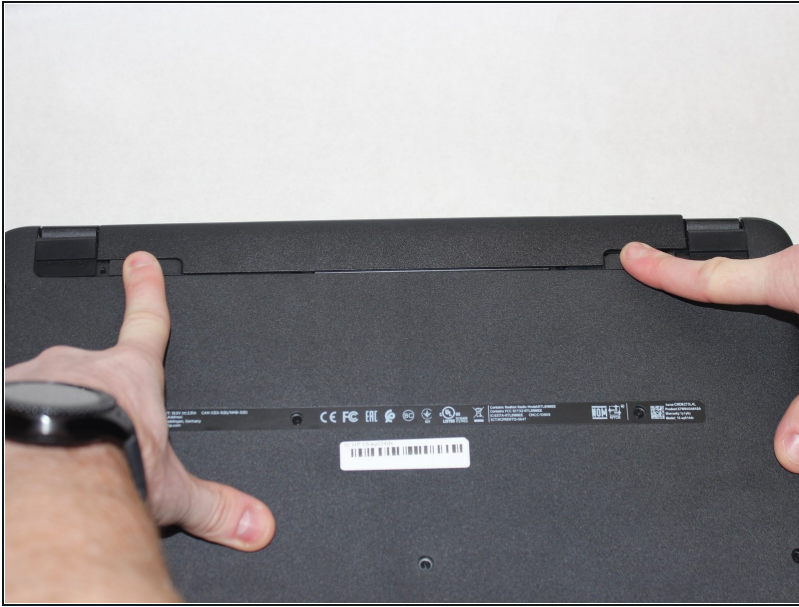
[Phillips #00 Screwdriver](#) (1)

Step 1 — Battery



 **Disconnect device from power source and power down.**

Step 2



- With the device turned upside down, use your index fingers to push the battery latches in towards each other.

Step 3



- ① The latch on your left will stay at the inward position, while the latch on the right will slide back out.
- Gently grasp the battery and pull it back away from the device and yourself.

Step 4 — Optical Drive



- Close the laptop and lay it down with the bottom facing up.
- Using a size #00 Phillips screw drive remove the screw holding in the optical drive.

Step 5



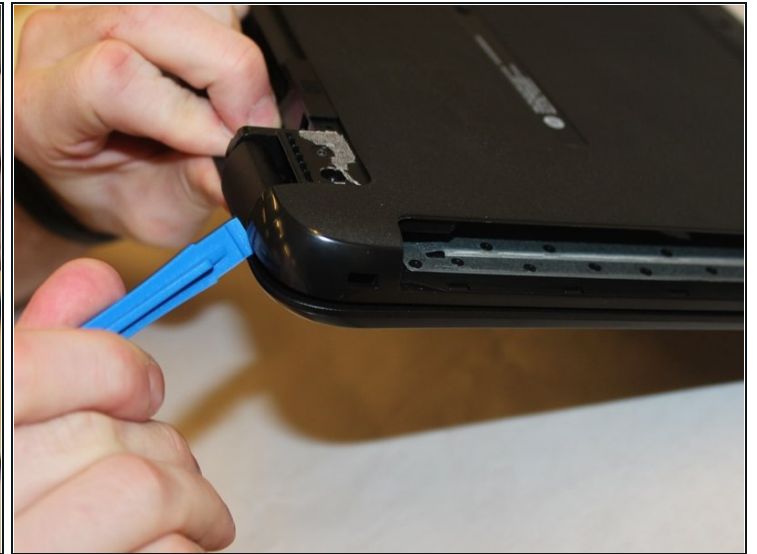
- Grip the optical drive and gently pull it out.

Step 6 — RAM



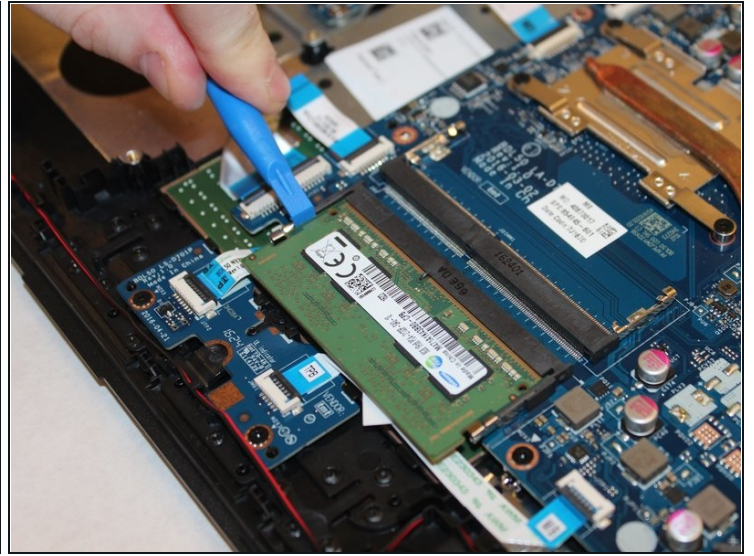
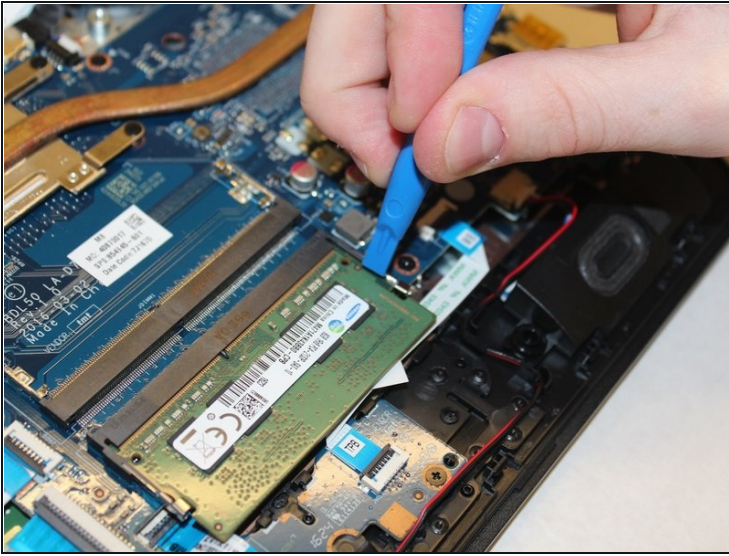
- Remove the 11 screws holding the body of the laptop together with a size #00 Phillips screwdriver.

Step 7



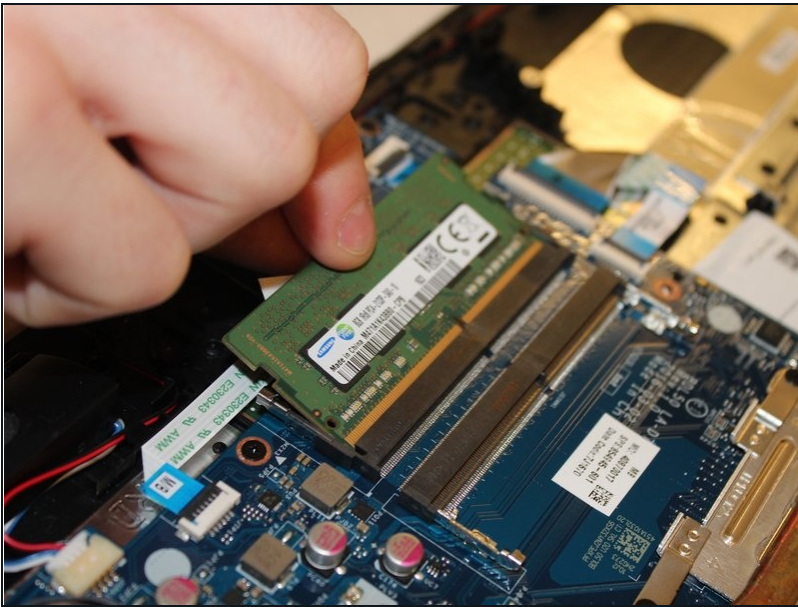
- Use the spudger to press the tabs in the back of the computer. Carefully remove the back of the laptop by prying around the sides using the plastic opening tool.

Step 8



- Undo the clips holding the RAM in place using the plastic opening tool.

Step 9



- Carefully pull out the RAM from the motherboard.

Step 10 — Hard Drive Disk



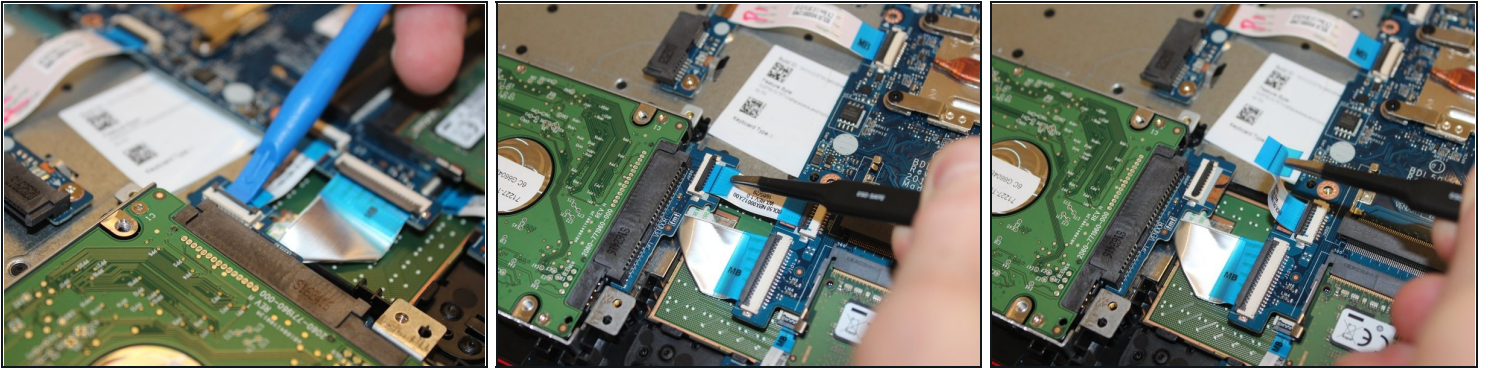
- Remove the highlighted screws holding the body of the laptop together with a size #00 Phillips screwdriver.

Step 11



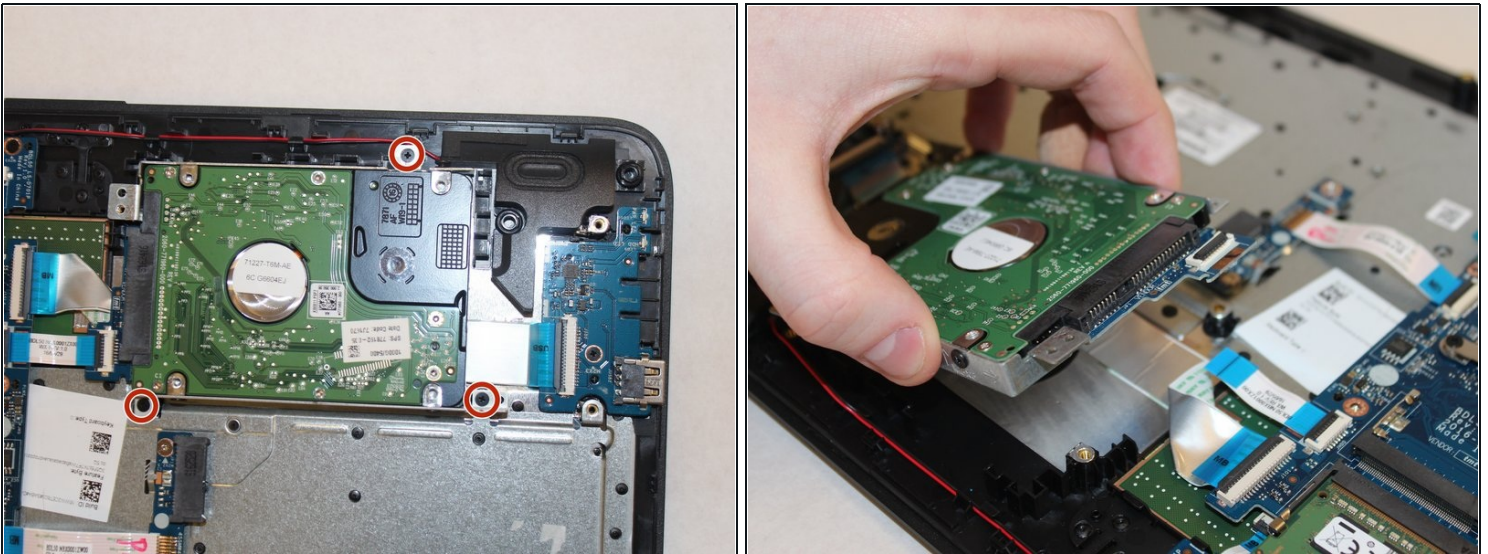
- Using the spudger, push in the tabs in the back that hold the body together. Carefully pry the body apart by working the spudger around the body.
- Pull the back cover off.

Step 12



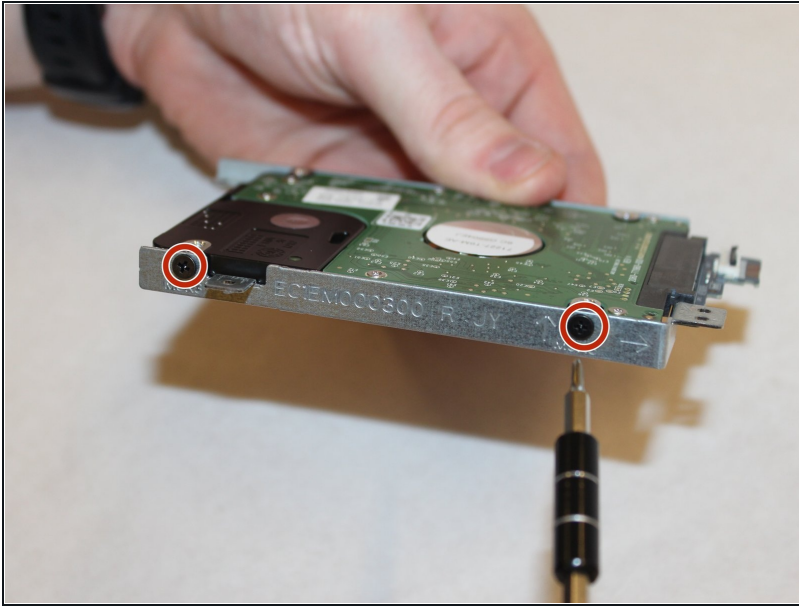
- Pry up on the clamp holding the SATA power ribbon using the plastic opening tool.
- Pull out the SATA power ribbon using the [tweezers](#).

Step 13



- Remove the highlighted screws holding the hard drive to the body using the Philips #00 screwdriver.
- Remove the hard drive.

Step 14



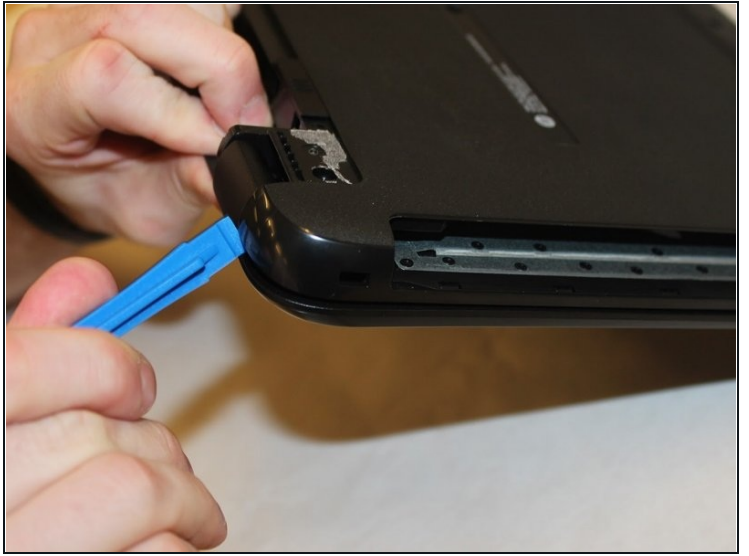
- Remove the 4 screws holding the hard drive to the hard drive cage using the Philips #00 screwdriver.

Step 15 — Wireless Card



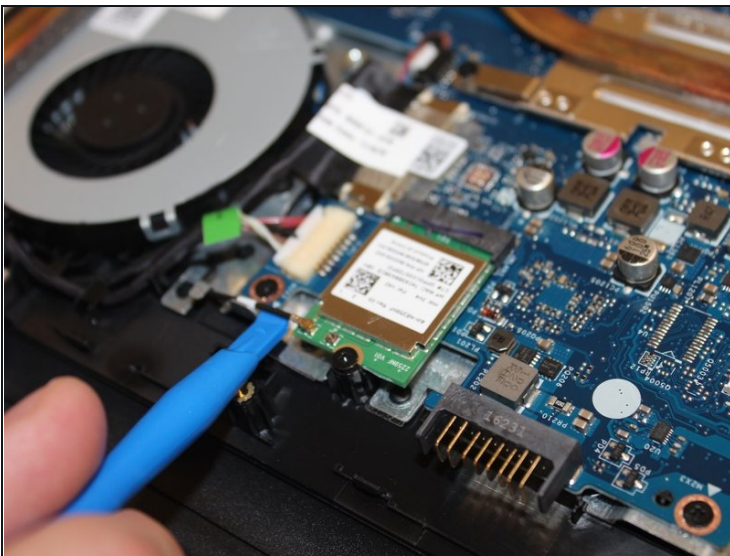
- Remove the 11 screws holding the body of the laptop together with a size #00 Phillips screwdriver.

Step 16



- Using the spudger, push in the tabs in the back that hold the body together. Carefully pry the body apart by working the spudger around the body.

Step 17



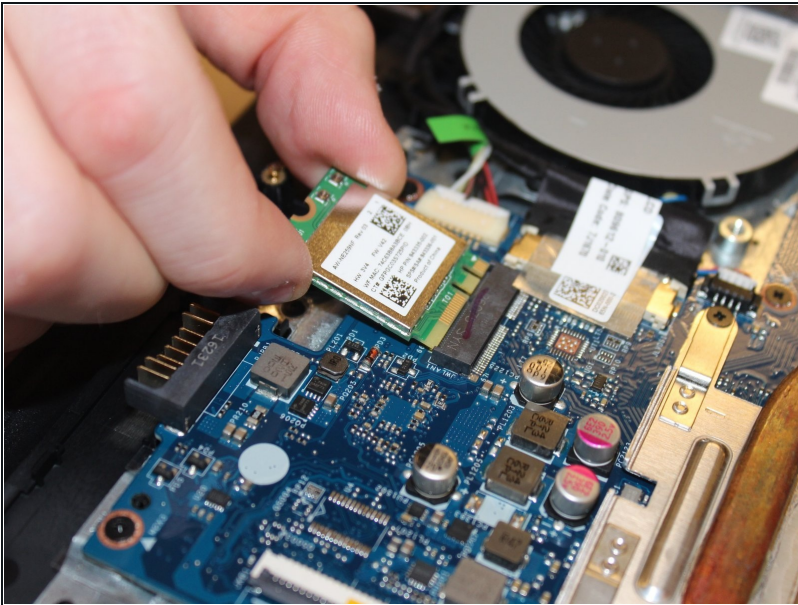
- Using the spudger, carefully pry the wire connecting the wireless card to the motherboard off of it.

Step 18



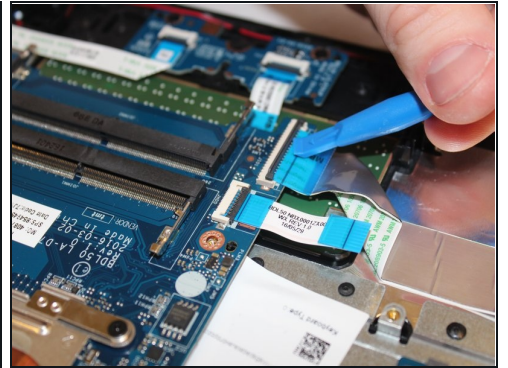
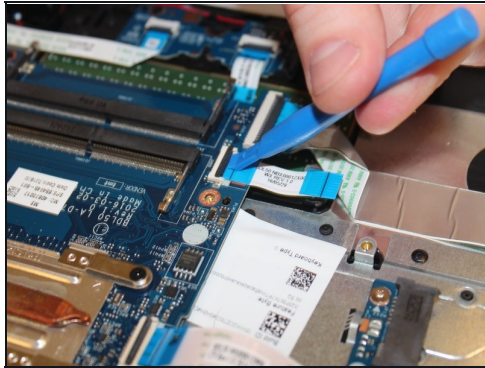
- Using the size #00 Phillips screwdriver remove the single screw holding it in place.

Step 19



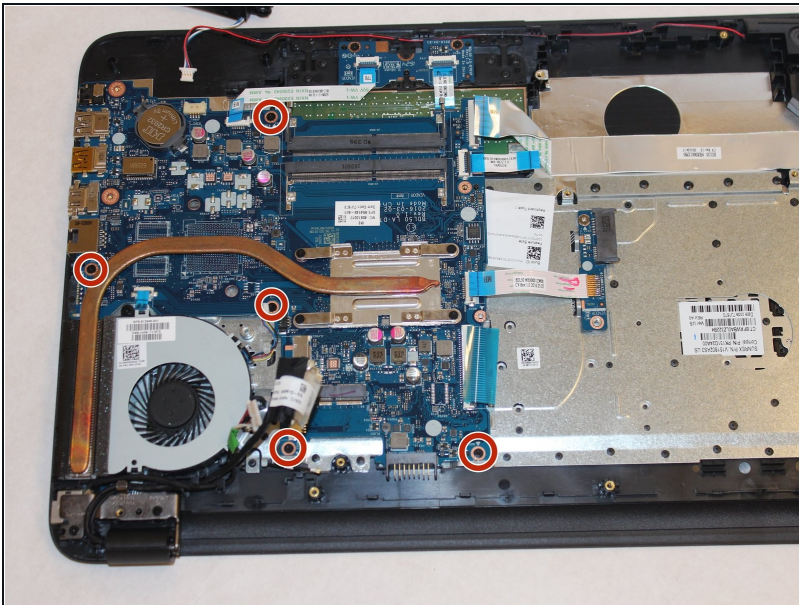
- carefully pull the card of its slot.

Step 20 — Motherboard



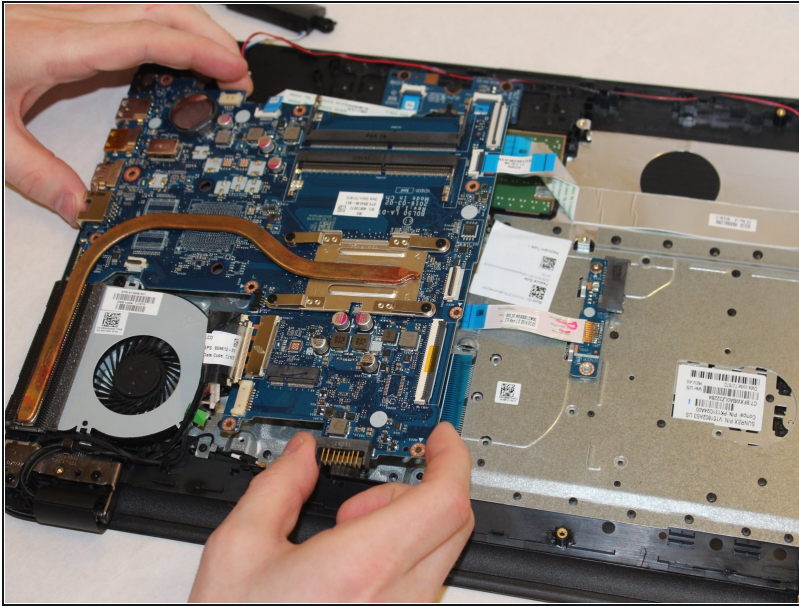
- Disconnect all ribbon connectors by flipping up the black tabs and gently pulling them out.
- Disconnect the speakers by gently pulling the connector out.
- Disconnect the Fan by gently pulling the connector out.
- Disconnect the power by gently pulling the connectors out.

Step 21



- Unscrew the five screws securing the motherboards.

Step 22



- Gently lift the motherboard up and out of the casing.

To reassemble your device, follow these instructions in reverse order.