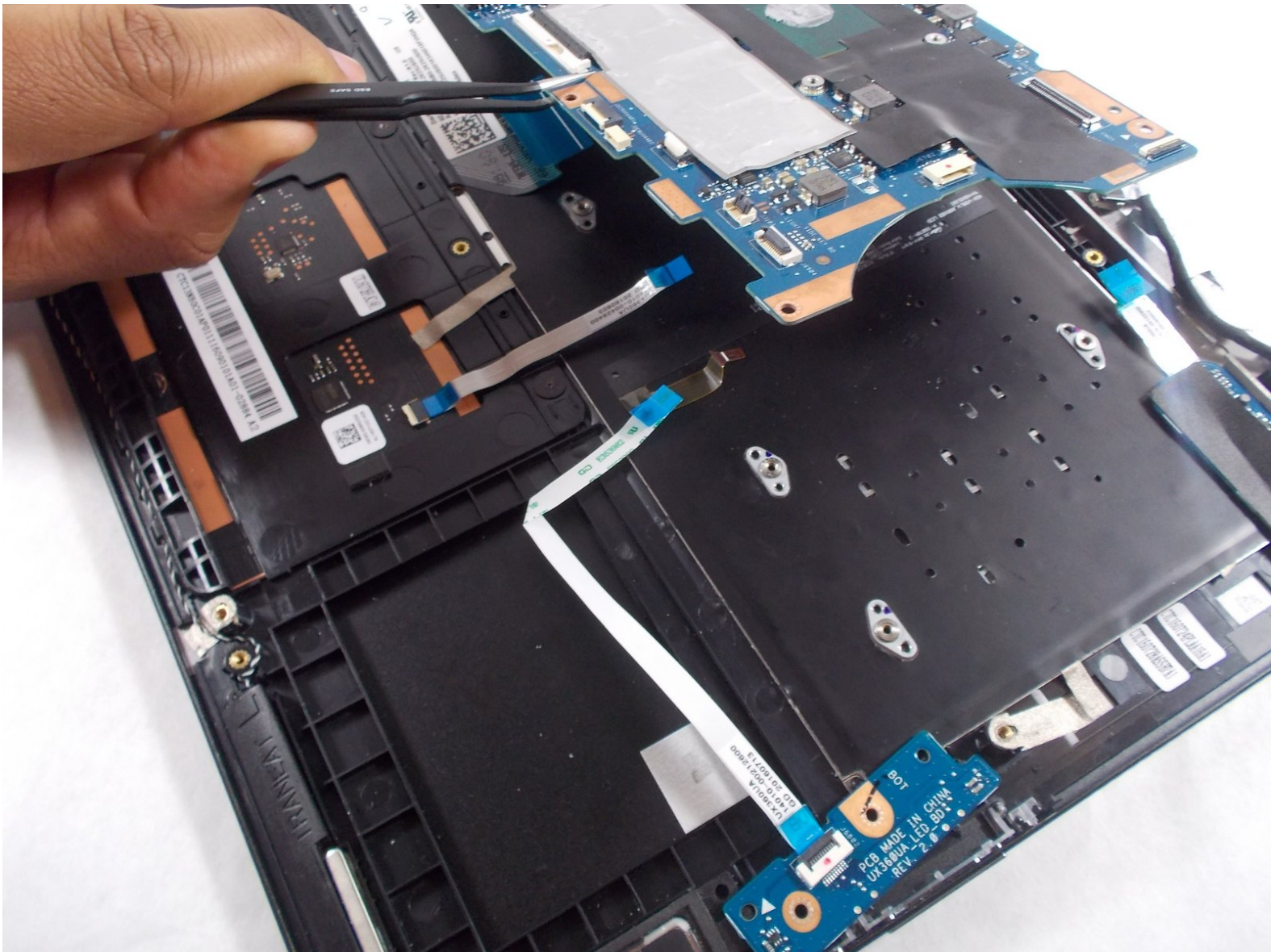




# ASUS Q324UA-BHI7T17 Motherboard Replacement

A step by step guide on how to quickly and easily replace the ASUS Q324UA-BHI7T17 motherboard component.

Written By: Scott Santiago



This document was generated on 2020-11-28 06:20:45 AM (MST).

# INTRODUCTION

There may be many reasons why a laptop will not turn on, hopefully it is a defective battery, however it could be because the motherboard is fried. If all other options are explored and nothing works, follow these steps to safely remove and replace the motherboard.



## TOOLS:

- [iFixit Opening Tools](#) (1)
- [Phillips #0 Screwdriver](#) (1)
- [Tweezers](#) (1)



## PARTS:

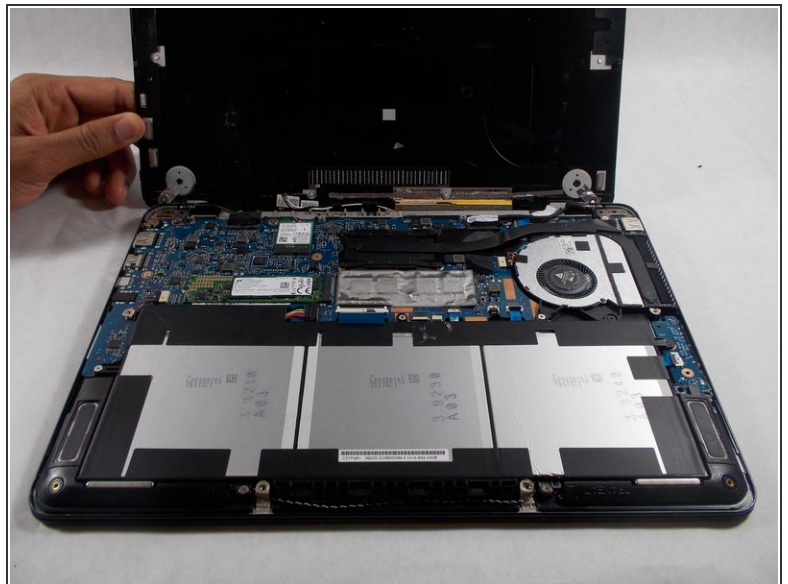
- [57Wh OEM Genuine C31N1538 Laptop Battery](#) (1)
- [13NB0C00M11011 13NB0C00AM0101 GENUINE OEM ASUS FAN AND HEATSINK Q324U SERIES](#) (1)
- [ASUS Q324UA-BHI7T17 Motherboard](#) (1)

## Step 1 — Battery



- Remove all 10 Phillips screws on the backplate.
- ⓘ All 10 screws are 0.55 inches and 20 mm in diameter.

## Step 2



- Carefully remove the backplate using the plastic opening tool.

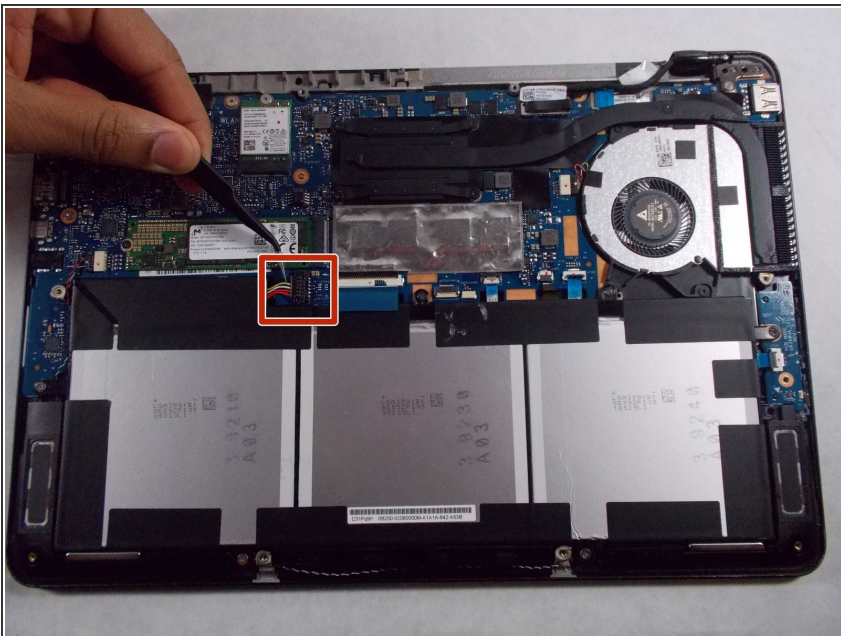


## Step 3



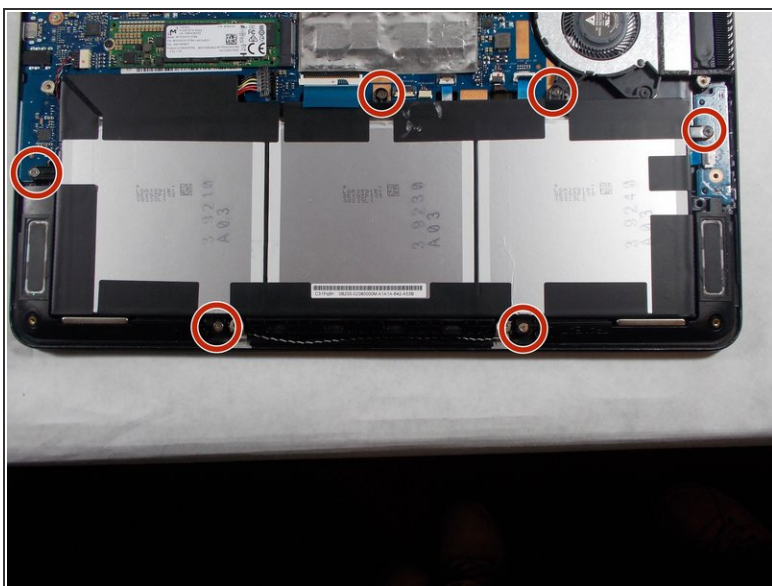
- Locate the battery near the bottom.

## Step 4



- Next, lift up the battery connector from the laptop in the upper left side of the battery, using tweezers or spudger.
- ⚠ Make sure to complete this step with caution, because if the battery is not unplugged, the motherboard may shock you.

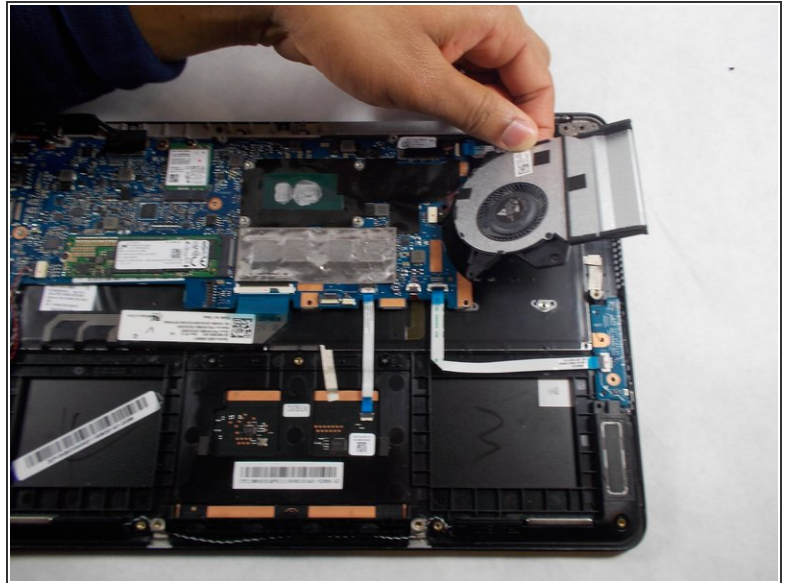
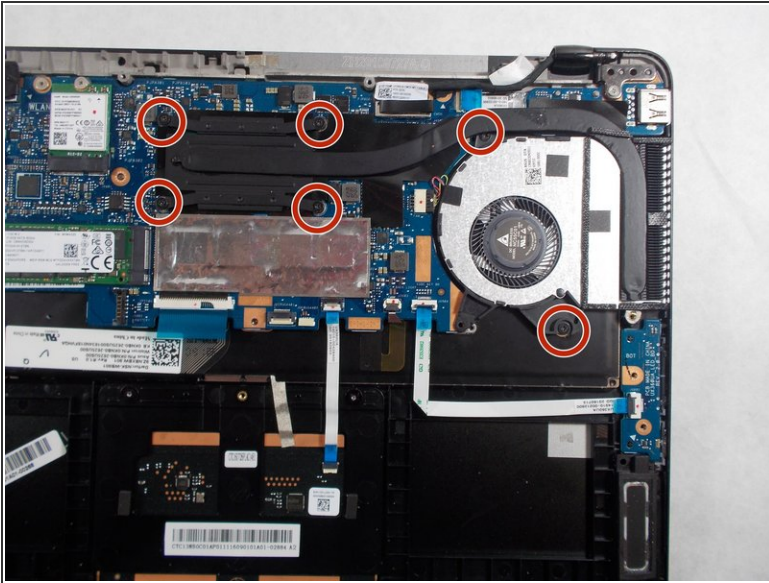
## Step 5



- Remove the six screws holding in the battery with a Phillips #0 screwdriver.
- Once battery is lifted out and removed, proper dispose of the old battery.
- ⓘ Each screw is 0.5 cm in length and 0.5 cm in diameter.

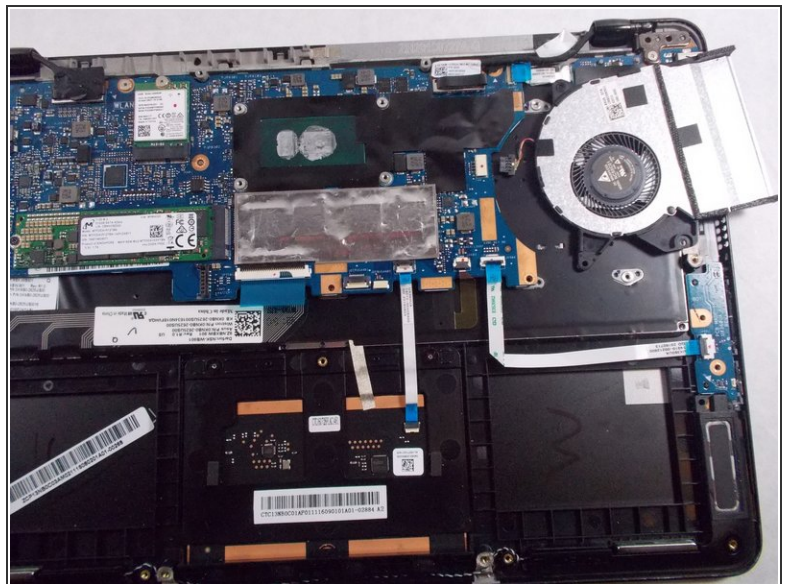
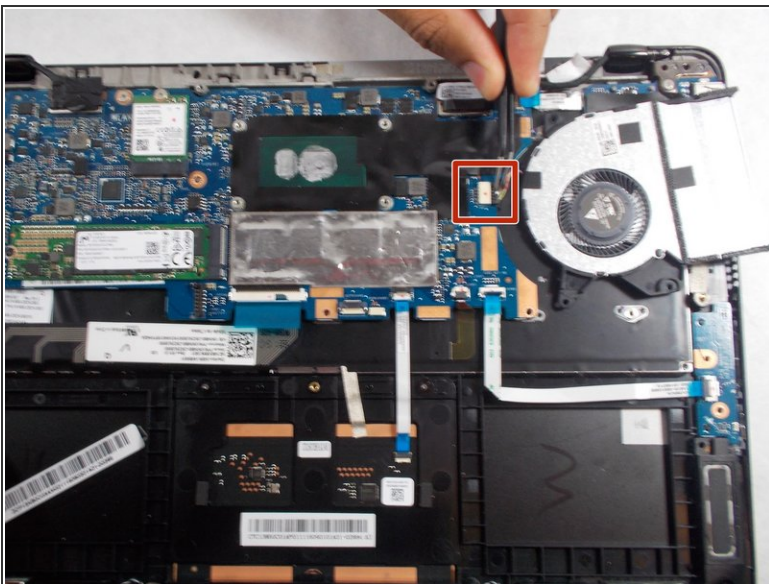


## Step 6 — CPU Fan



- Using a Phillips #0 screwdriver remove the six screws holding the CPU Fan and Heatsink in place.
- ❗ All six screws are 0.4 cm in length and have a 0.5 cm head diameter.

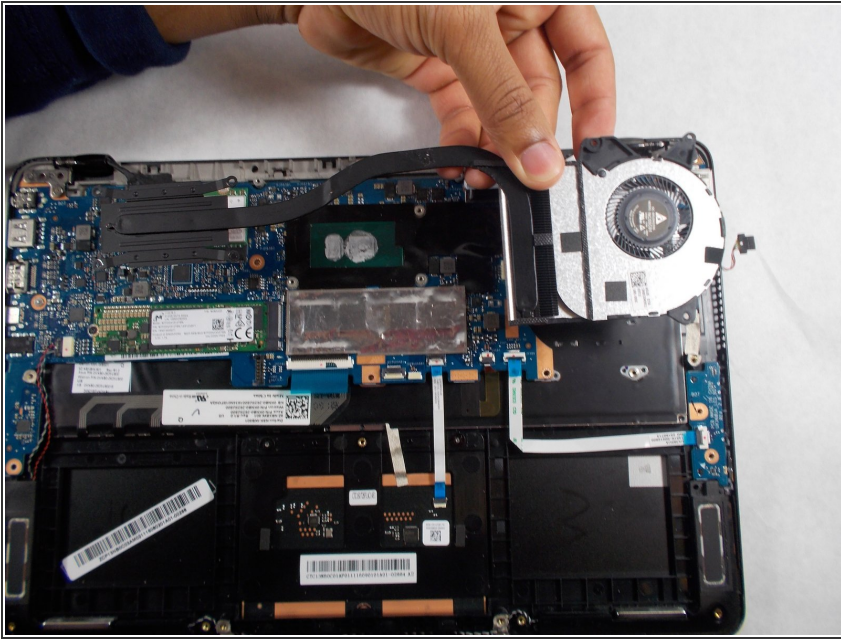
## Step 7



- Next, carefully remove the sliding connector that connect the CPU Fan and the laptop together using the tweezers.

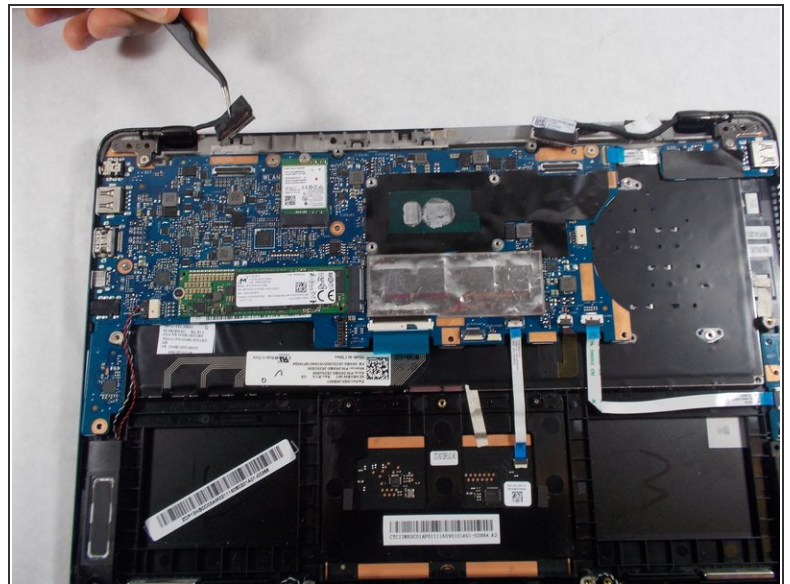
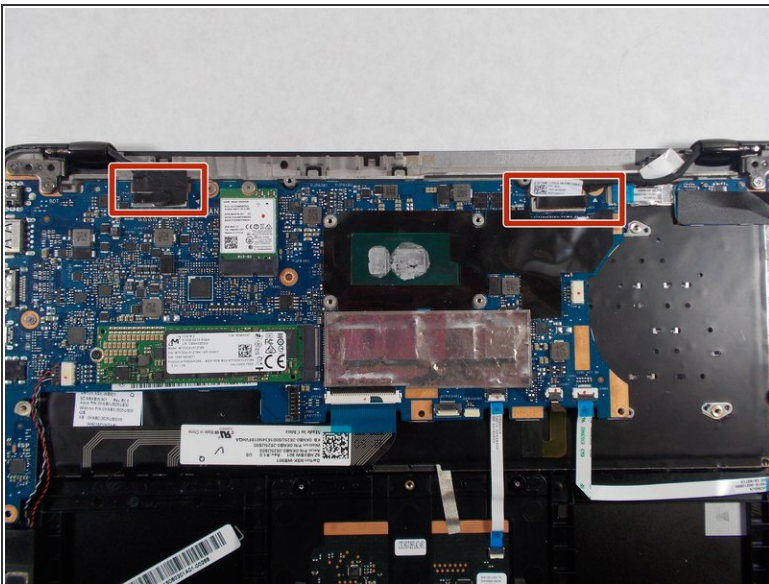


## Step 8



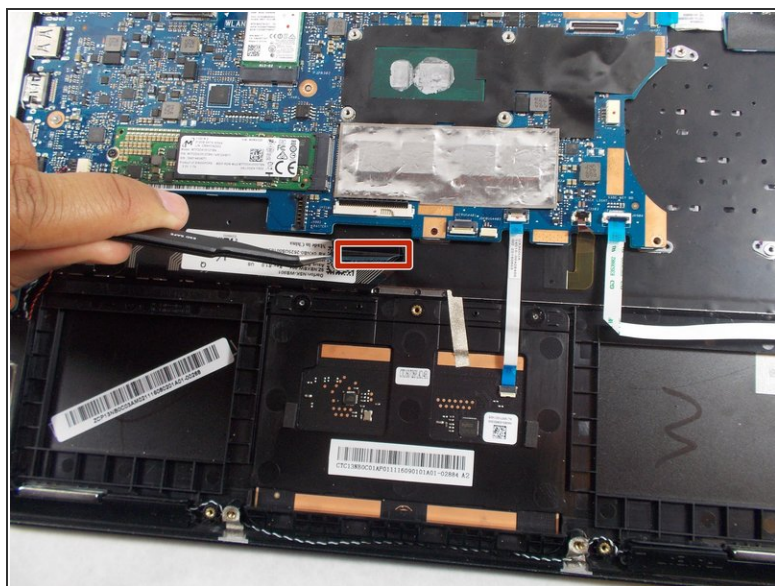
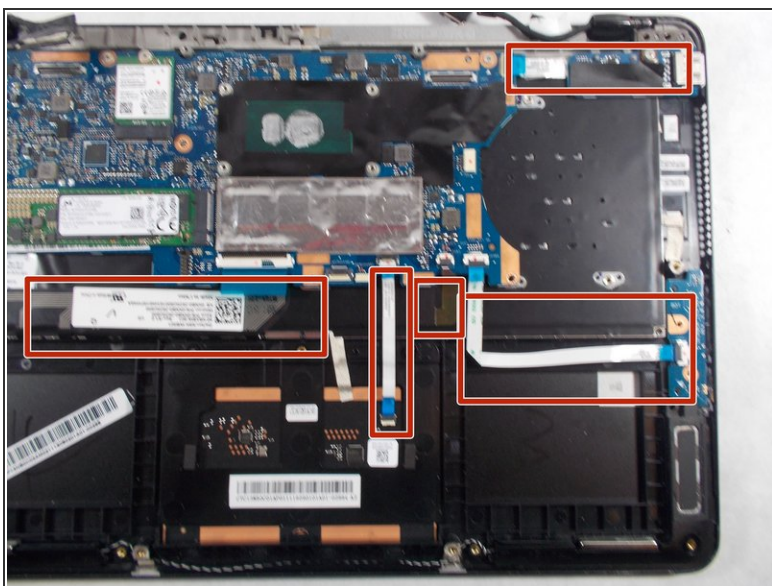
- Remove the CPU Fan and Heatsink by simply lifting upwards.

## Step 9 — Motherboard



- Locate the two connectors that are located near the top of the motherboard.
- Simply lift the two connectors up and they should pop out easily.

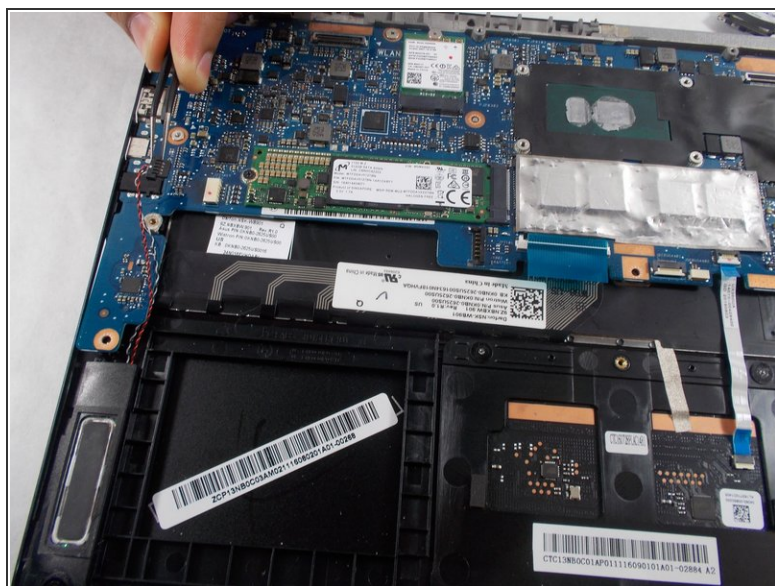
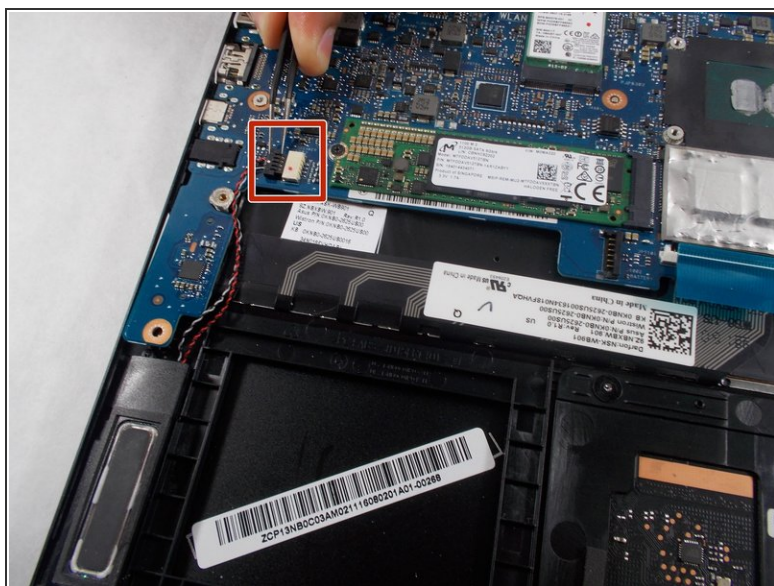
## Step 10



- Locate all 5 ribbon cables that are connected to the motherboard.
- Using tweezers lift the black component up therefore allowing the ribbon cable to be released and taken out.



## Step 11



- Locate the single sliding connector that is attached to the motherboard.
- Using tweezers slightly remove the sliding connector from the motherboard.

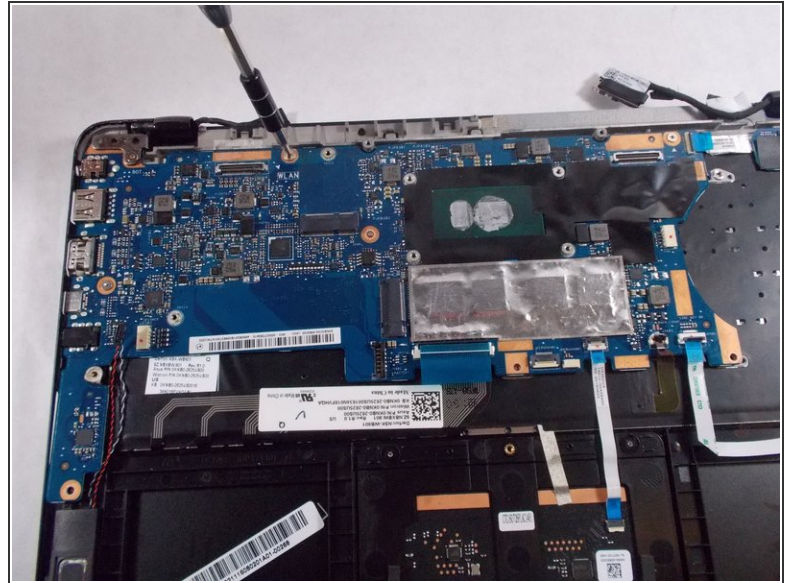
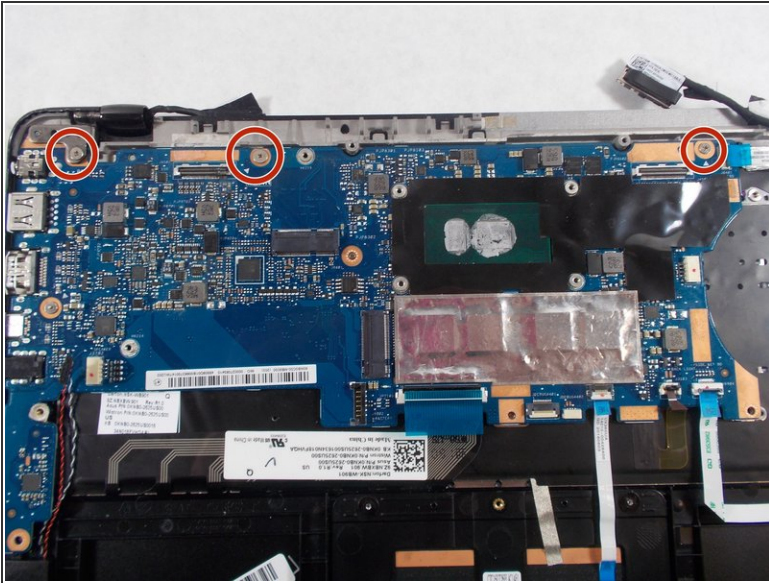
## Step 12



- There are two chips that are attached to the motherboard. One is a square wifi card and one is a rectangular m.2 ssd, locate them on the motherboard.
- Remove the two screws holding the chips in place on the mother board.
- ⓘ The screw for the rectangle chip is 0.5cm in length and 0.5cm in head diameter. While the square chip screw has a 0.3 cm length and 0.5 cm head diameter.
- *Both chips now can be removed by simply sliding them out of their connectors.*

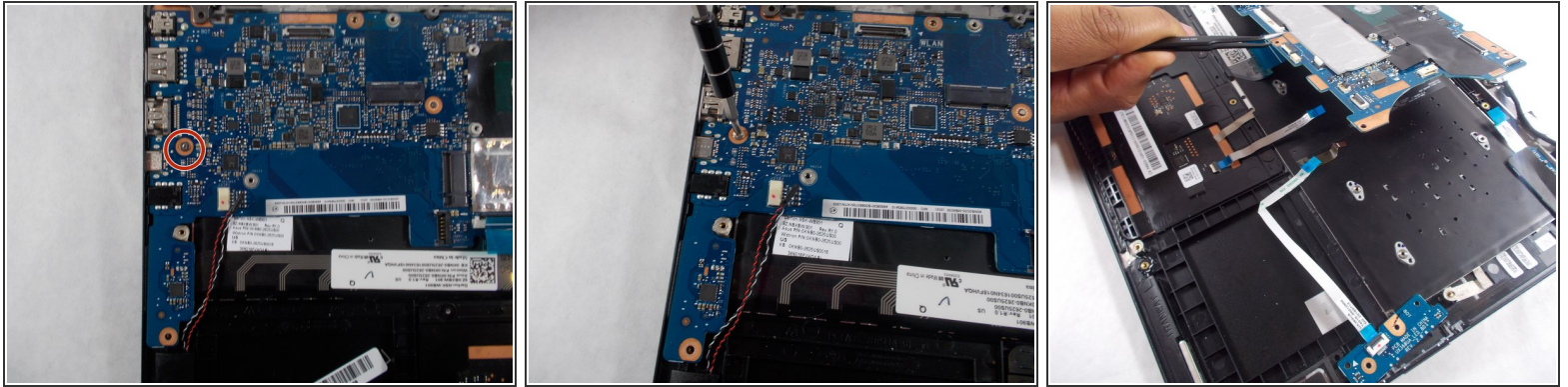


## Step 13



- Locate the 3 screws near the top of the motherboard holding the motherboard in place.
- Using a Phillips head #0 screw driver remove each screw driver.
- ⓘ The screw all the way to the right is 0.5cm in length and 0.4cm in head diameter. The screw all the way to the left is 0.6 cm in length and 0.4cm in head diameter. The screw in the middle is 0.3cm in length and 0.5 cm in head diameter.

## Step 14



- Locate the final screw that holds the motherboard in place, on the left side of the motherboard near the middle.
- Using a Phillips head #0 screwdriver remove the screw. The motherboard should easily pop out and from there properly dispose of the mother board.
- ⓘ The screw is 0.3cm in length and 0.5 cm in head diameter.

To reassemble your device, follow these instructions in reverse order.