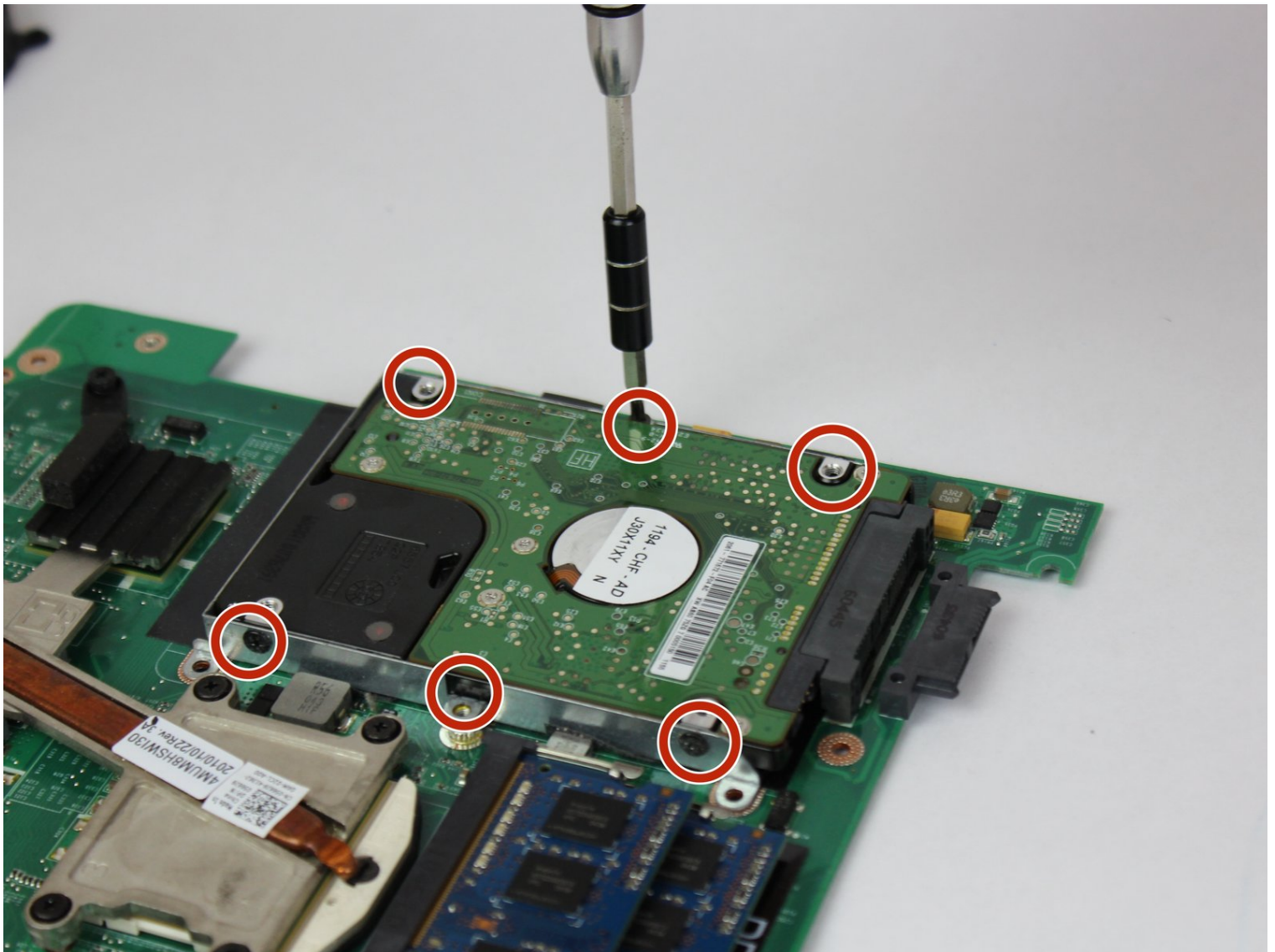




Dell Inspiron N4010 Hard Disk Drive Replacement

Replacing the Hard Drive for a laptop can speed...

Written By: Jonathan Sellier



INTRODUCTION

Replacing the Hard Drive for a laptop can speed it up and add more storage. Keep in mind that after replacing the hard drive you must reinstall your Operating System. Locate all product keys needed before performing this guide.



TOOLS:

Phillips #0 Screwdriver (1)

Spudger (1)

iFixit Opening Tool (1)



PARTS:

Crucial MX500 250 GB SSD (1)


Crucial MX500 500 GB SSD (1)

Crucial MX500 1 TB SSD (1)

Crucial MX500 2 TB SSD (1)

Step 1 — Battery



 Make sure the laptop is not plugged into any wall outlets or the charger

- Unlock the battery by sliding the right-hand switch to the right.

Step 2



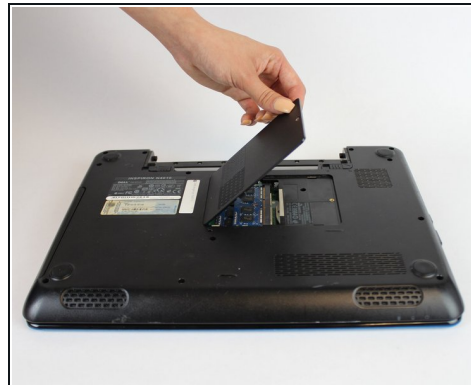
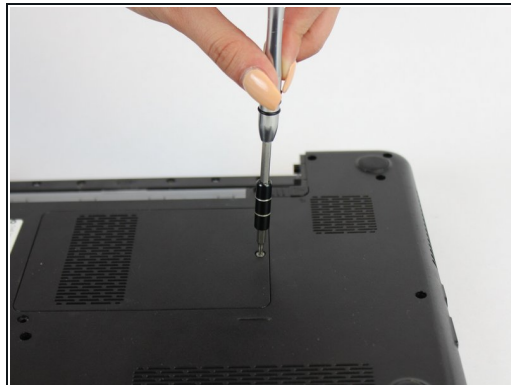
- While holding the left-hand switch to the left position, pull the battery away from the laptop.

Step 3



- The battery is now fully removed and the laptop will not power on without it.

Step 4 — Keyboard



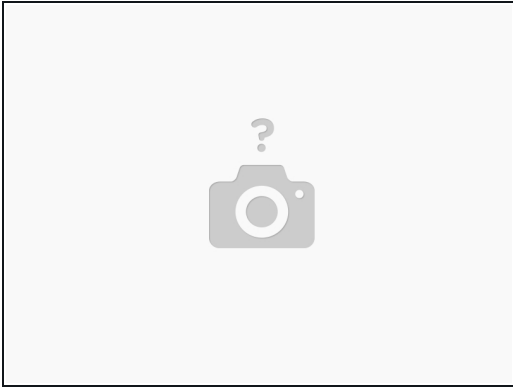
- Using the #0 Philips head, unscrew the indicated screw.
- Carefully pull the RAM cover up and away.

Step 5



- Unscrew the indicated 5.7mm screw beneath the RAM Cover.

Step 6



- Remove another screw above the battery release tab

Step 7



- Using a thin plastic tool (such as a guitar pick or spudger) at the top of the keyboard just above the F7 key, gently pry the keyboard away.
- Move the spudger to either end at the top of the keyboard to fully undo all plastic clips.

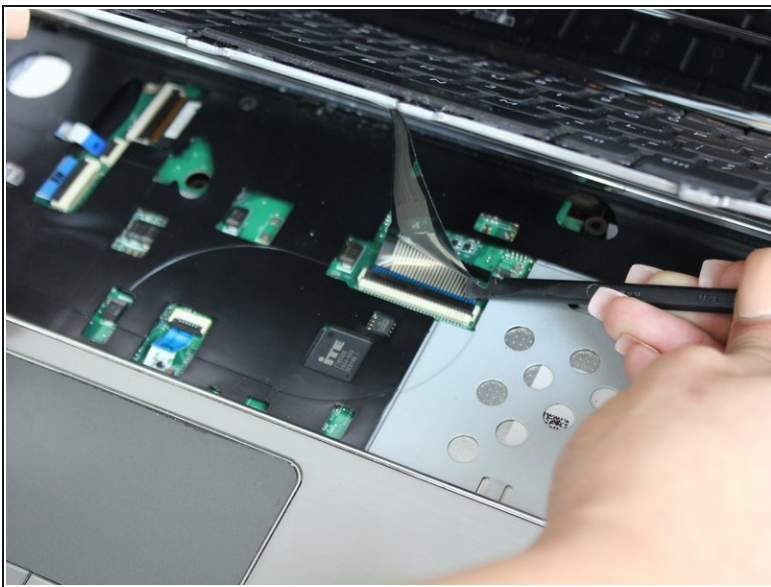
Step 8



- Carefully tip the keyboard upwards and pull it slightly away from the body of the laptop.

⚠ Be careful not to put stress on the ribbon cable below.

Step 9



- Carefully unclip the ribbon cable by tipping the keyboard towards the screen.

i The keyboard is now completely disconnected.

Step 10 — Top Cover



- Remove the indicated 5.7mm screws.
- Remove the smaller 3mm screws from underneath the battery compartment.

Step 11



- With a plastic spudger, pry away the silver top cover from the black casing.
- Move the tool to the right and left along the seams to fully disconnect the cover.

Step 12



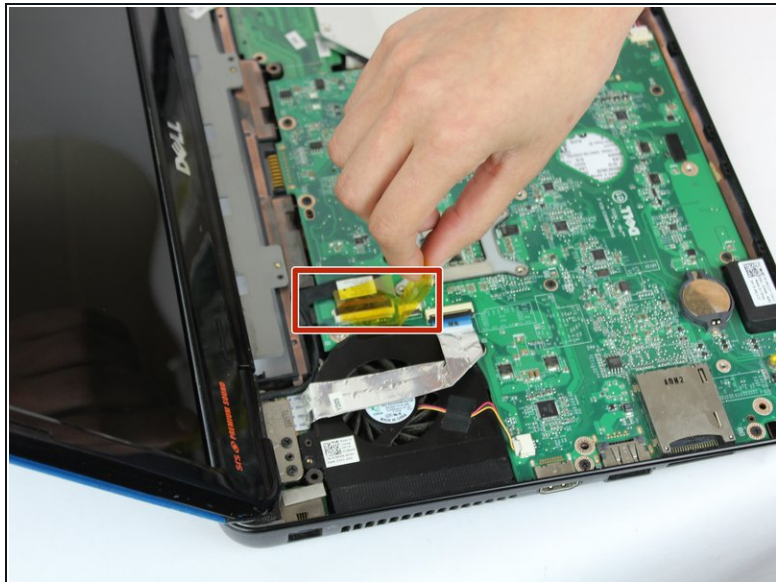
- Disconnect the indicated ribbon cables underneath where the keyboard sits.

Step 13



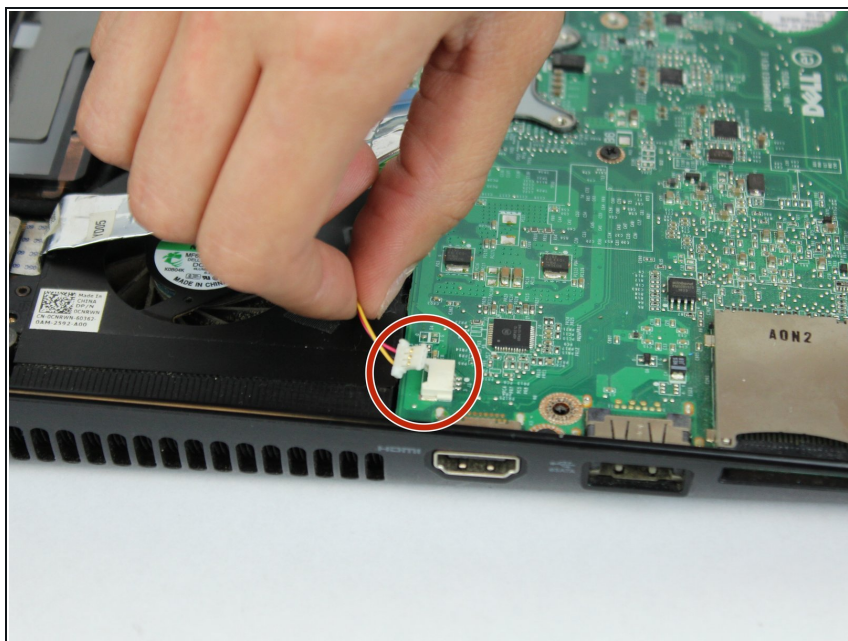
- Lift the cover upwards and away from the body of the laptop, after removing the optical drive and unscrewing the three screws on the right

Step 14 — Fan



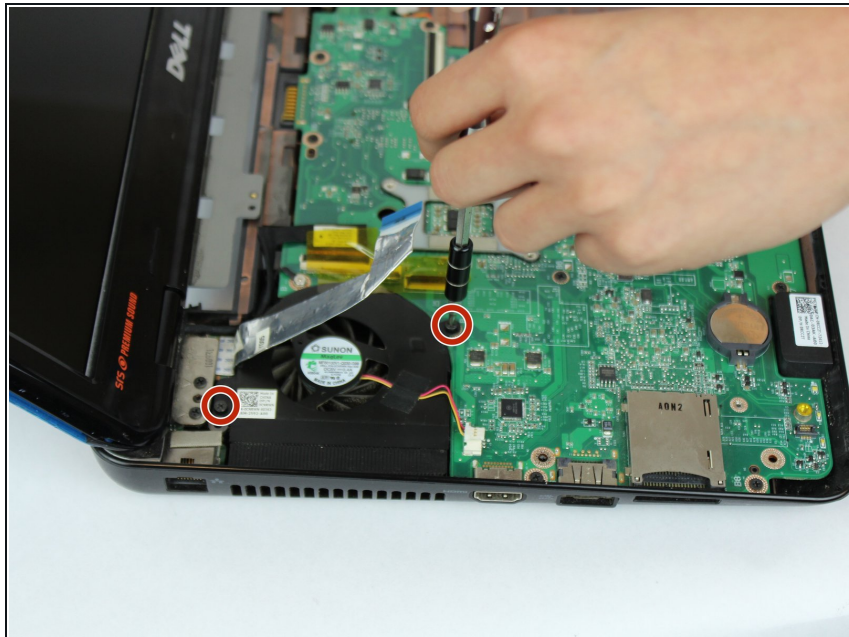
- Peel back the yellow tape to expose the ribbon connector.
- Unplug the ribbon cable from the motherboard.

Step 15



- Unplug the 3-wire connector from the motherboard.

Step 16



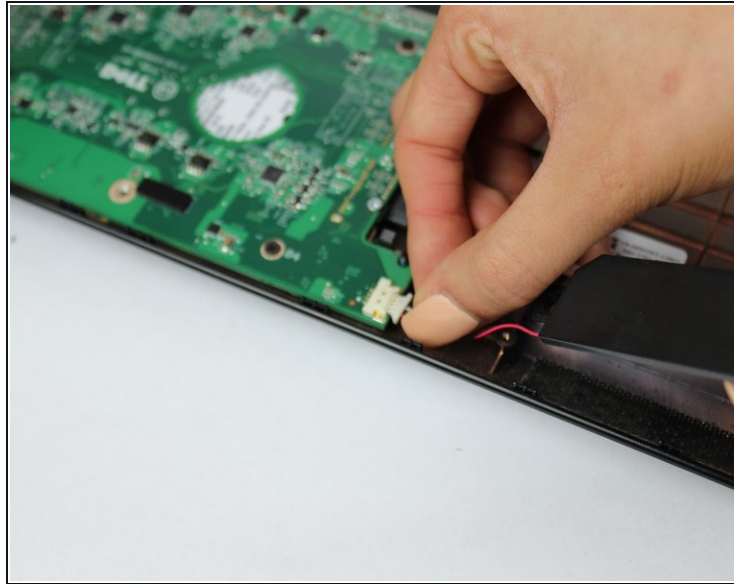
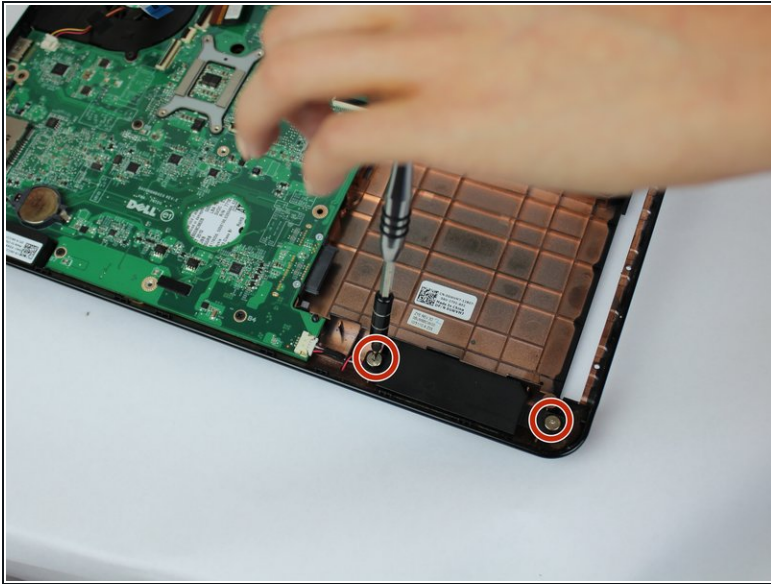
- Unscrew the indicated 5.6mm screws with the #0 Phillips Head Screwdriver.

Step 17



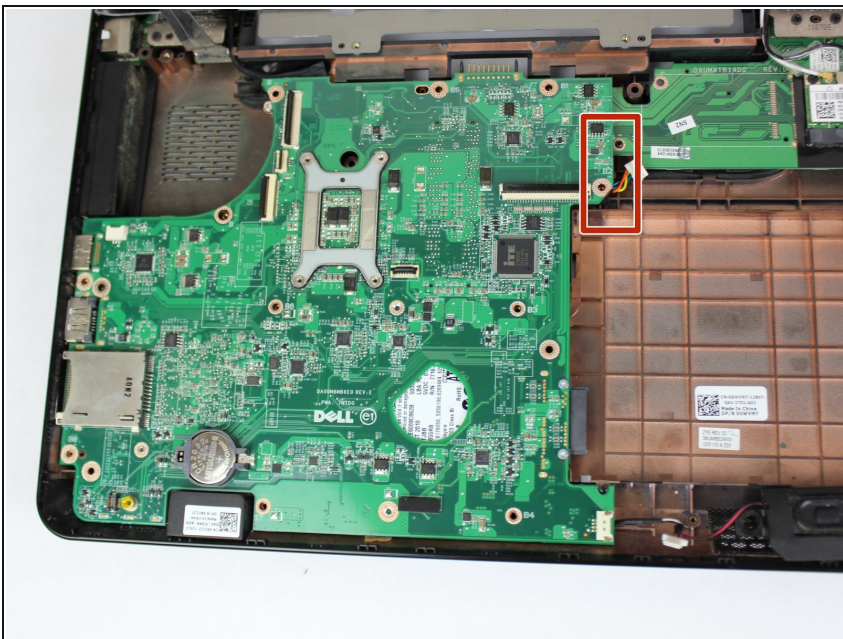
- Remove the fan from the device.

Step 18 — Motherboard



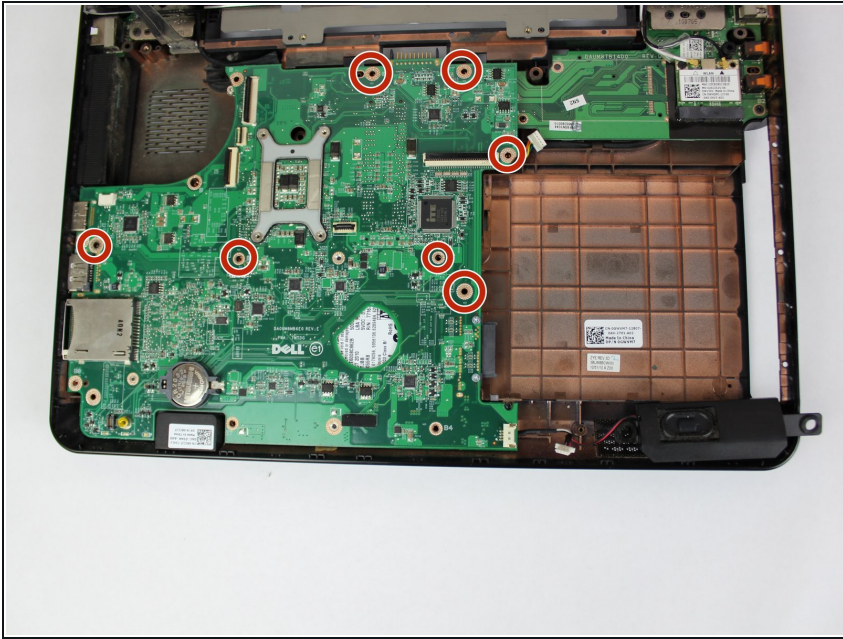
- Unscrew the two screws on the right hand speaker with the #0 Phillips Head.
- Unplug the speaker connector from the motherboard.

Step 19



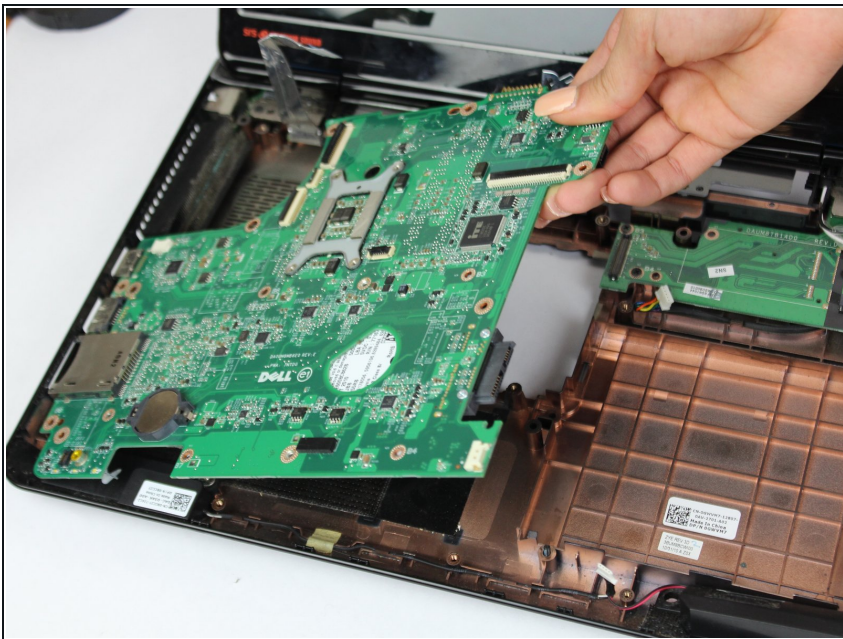
- Reaching under the daughter board, disconnect the connector.
- i** It will be under the board in the area indicated.

Step 20



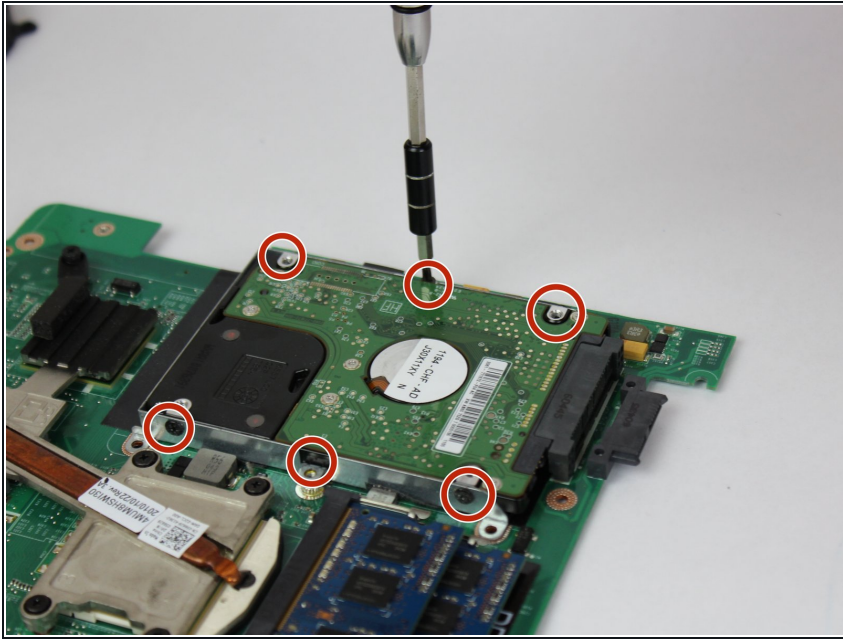
- Unscrew the indicated 5.6mm screws with a Phillips #0 screwdriver.

Step 21



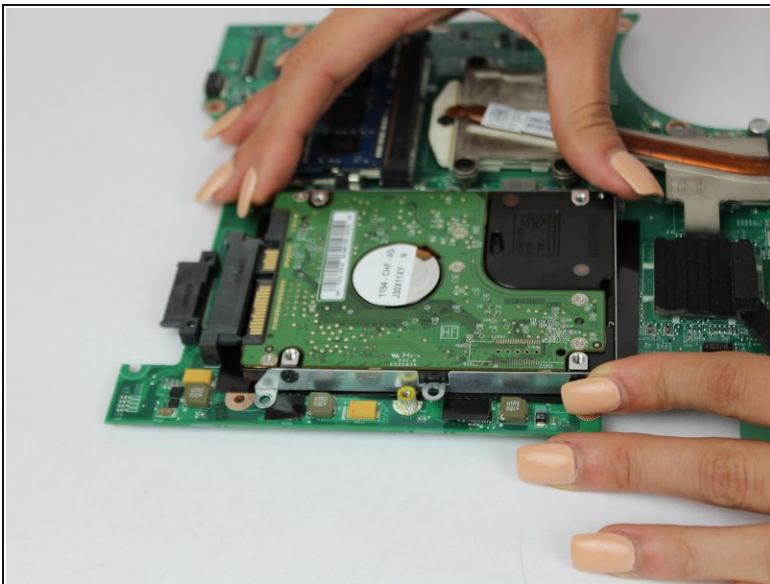
- The motherboard can now be removed by pulling upwards, tilting it to the left of the laptop until the connectors clear the body of the laptop.

Step 22 — Hard Disk Drive



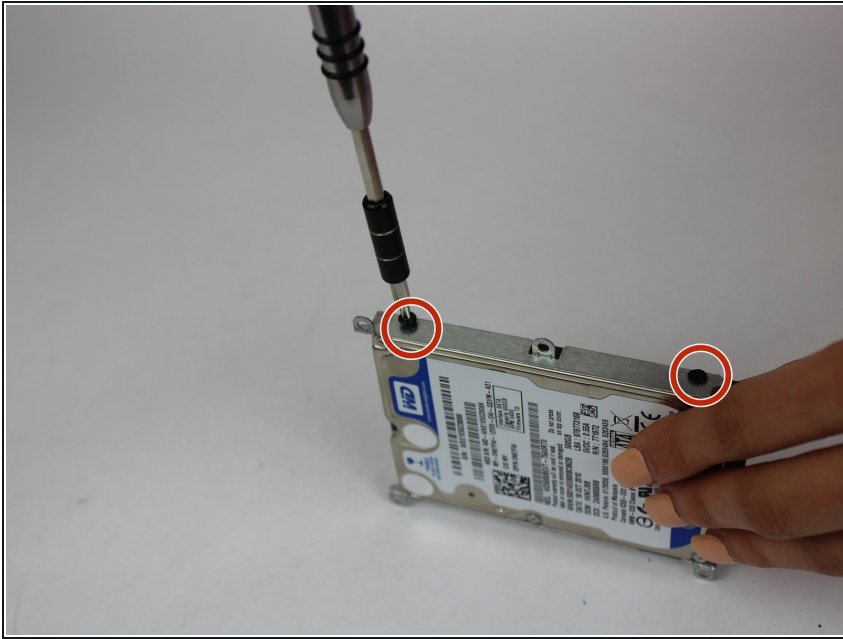
- Unscrew the 6 Phillips head screws holding the hard drive to the motherboard with the #0 driver head.

Step 23



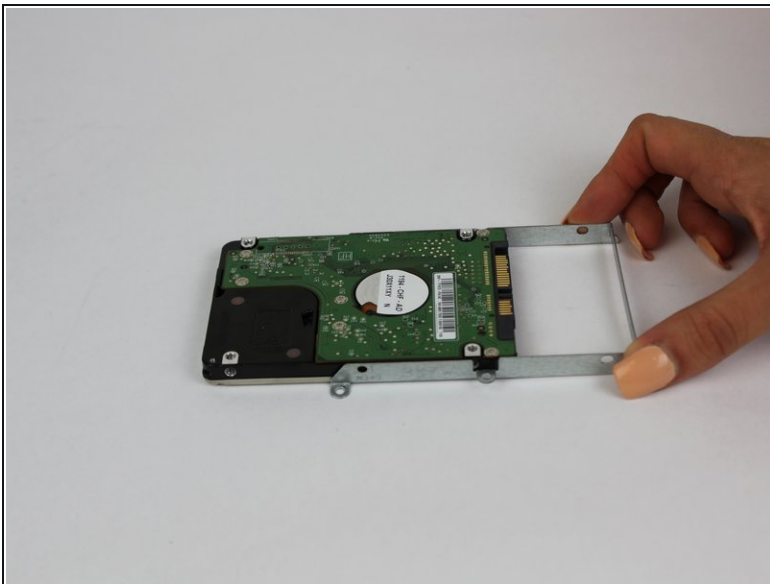
- Slide the hard drive towards the center of the motherboard.
- The hard drive should come away from the motherboard.

Step 24



- Undo the 2 screws with the #0 Phillips head driver on either side of the hard drive assembly.

Step 25



- Slide the assembly off of the hard drive.

To reassemble your device, follow these instructions in reverse order.