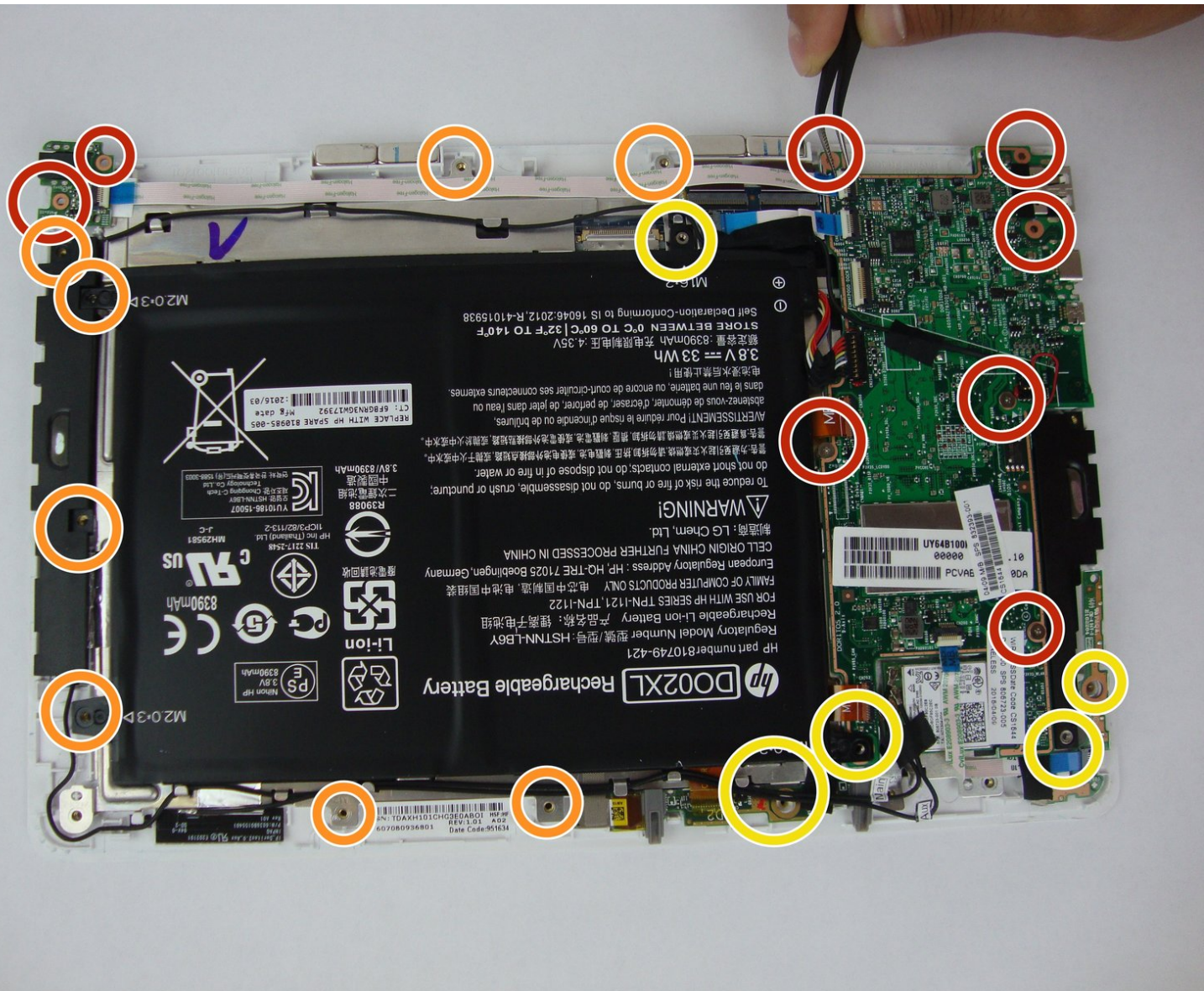




# HP Pavilion x2 10-n113dx Screen Replacement

How to take apart the HP Pavilion X2 laptop to replace a defective screen with a new screen.

Written By: David Zambrano



---

## INTRODUCTION

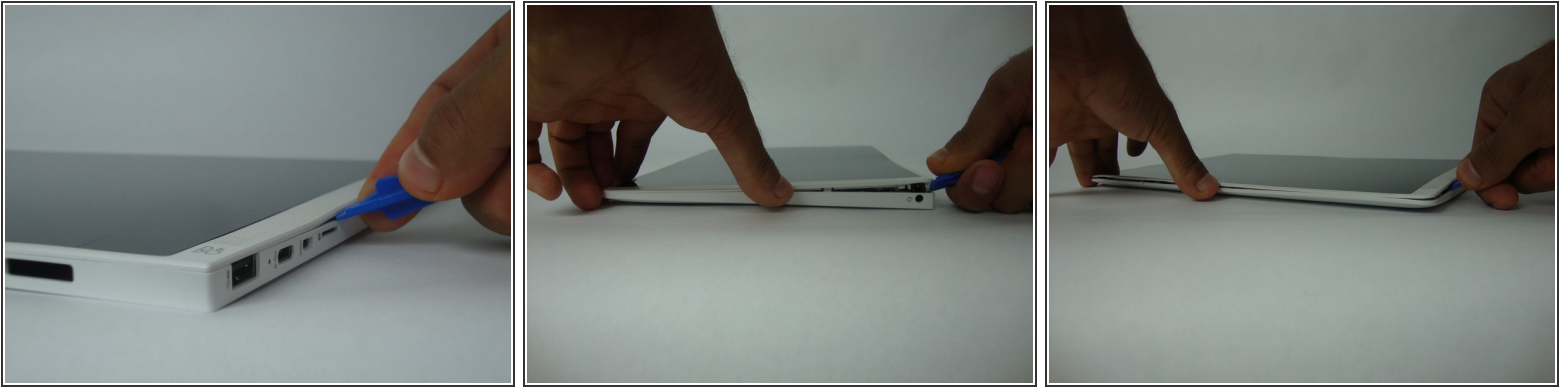
If the HP Pavilion X2's power isn't working, the battery may need to be changed. This guide shows how to take apart the HP Pavilion X2 to expose the screen and therefore take it apart to replace it with a new one.




### TOOLS:

- [Phillips #0 Screwdriver](#) (1)
  - [Precision Tweezers Set](#) (1)
  - [iFixit Opening Tools](#) (1)
-

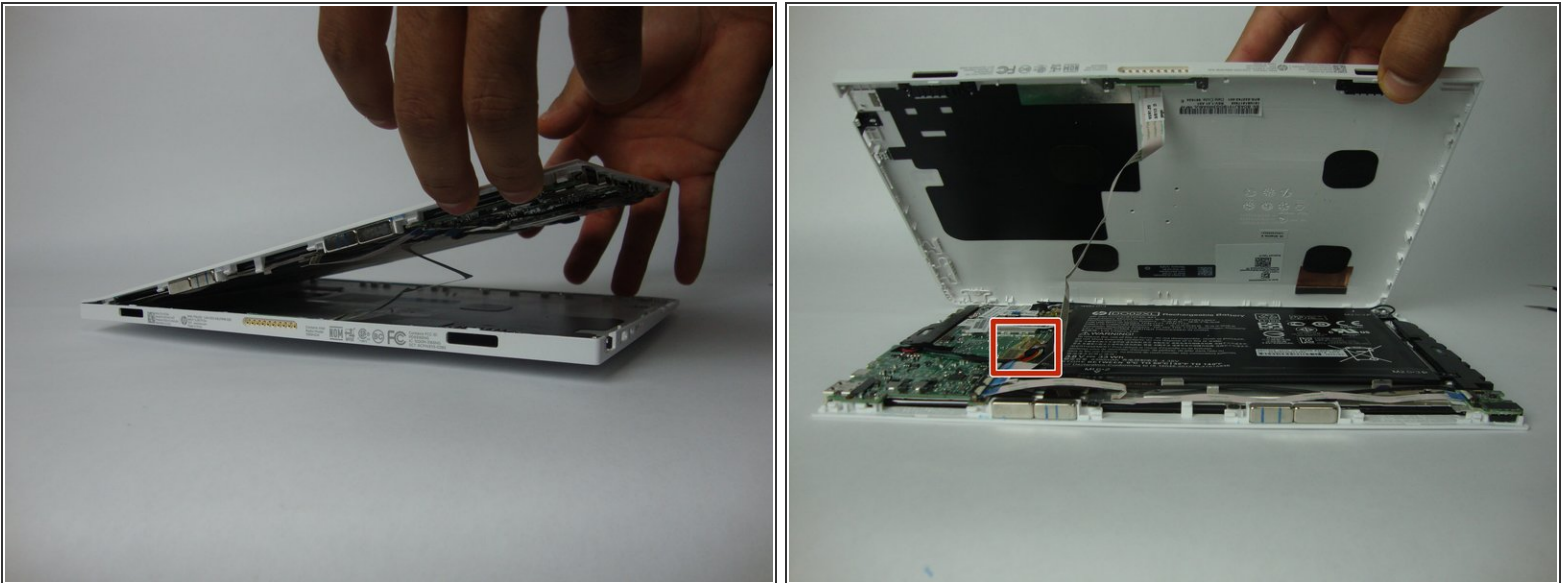
## Step 1 — Battery




 Before starting, please turn off your laptop.

- Using the blue plastic opening tool or a flat bladed tool, carefully slide the blade in between the display panel and gently slide to prop open the assembly.

## Step 2

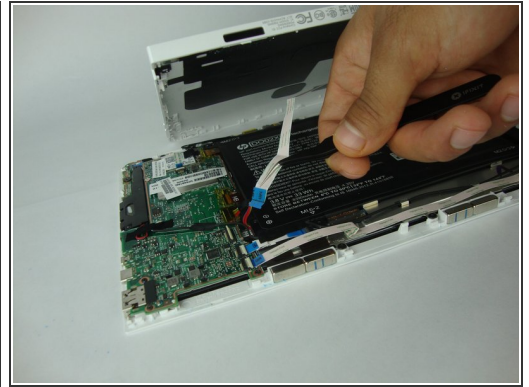
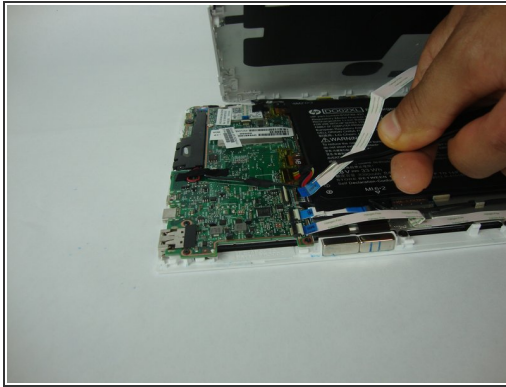


- Gently lift and remove the display panel from the assembly.
- Remove the translucent yellow tape that covers the battery connector on the mainboard.

 The tape will be in the way for a future step.

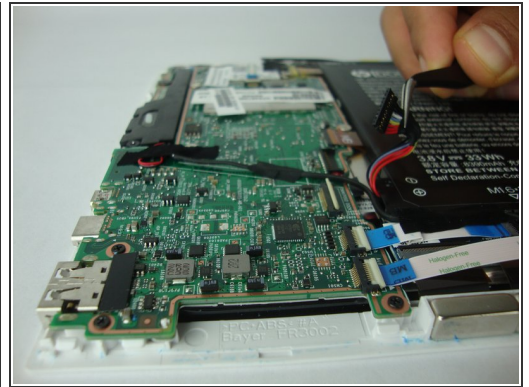
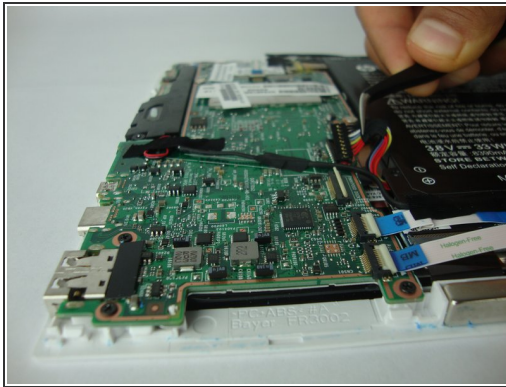
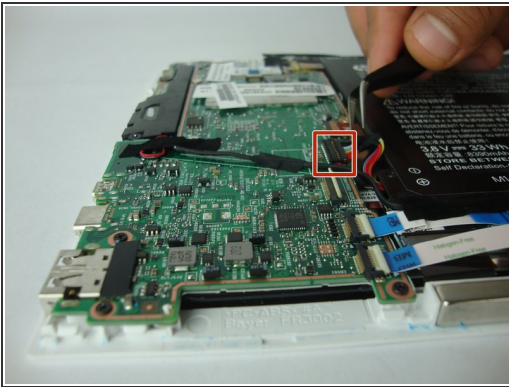


## Step 3



- Flip up the small white colored locking flap using the tip of a spudger or your fingernail. Then the ribbon cable can be removed easily without much effort.
- Carefully disconnect the white ribbon cable from the mainboard.

## Step 4



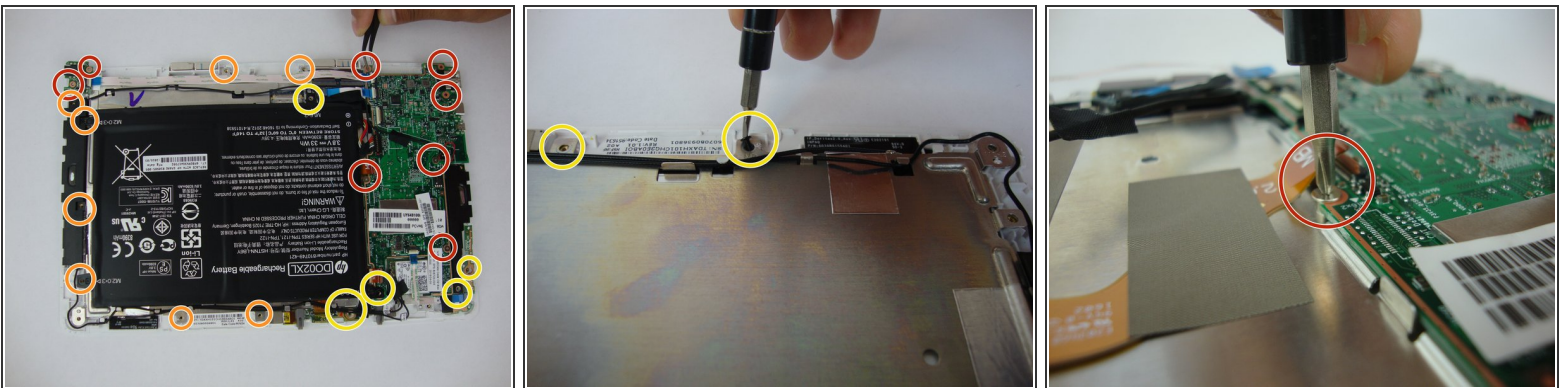
- Carefully disconnect the battery cable from its connector on the mainboard.

## Step 5



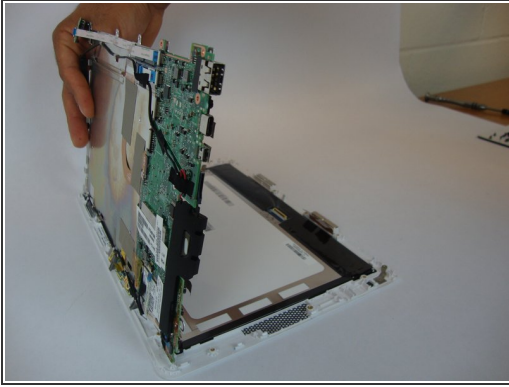
- Using the Phillips #0 screwdriver, carefully remove the 4 corner screws that hold the battery to the display panel.
- ⓘ 3 screws are 3.12 mm head, 2.40 mm length, and 1 screw is 5.85mm head, 2.5mm length.
- Remove the battery from the device.

## Step 6 — Screen



- Using the Phillips #0 screwdriver, carefully remove the 21 screws that hold the screen to the display panel. 3.32 mm head, 3.99 mm length (RED) , 2.82 head 3.5 mm length (YELLOW), and 4.15 mm head, 2.35 mm length (BLUE).
- 3.32 mm head, 3.99 mm length.
- 2.82 head 3.5 mm length.
- 4.15 mm head, 2.35 mm length.

## Step 7



- Very carefully lift the circuit board in order to keep everything attached. Be careful with any cables that may still be connected.

To reassemble your device, follow these instructions in reverse order.