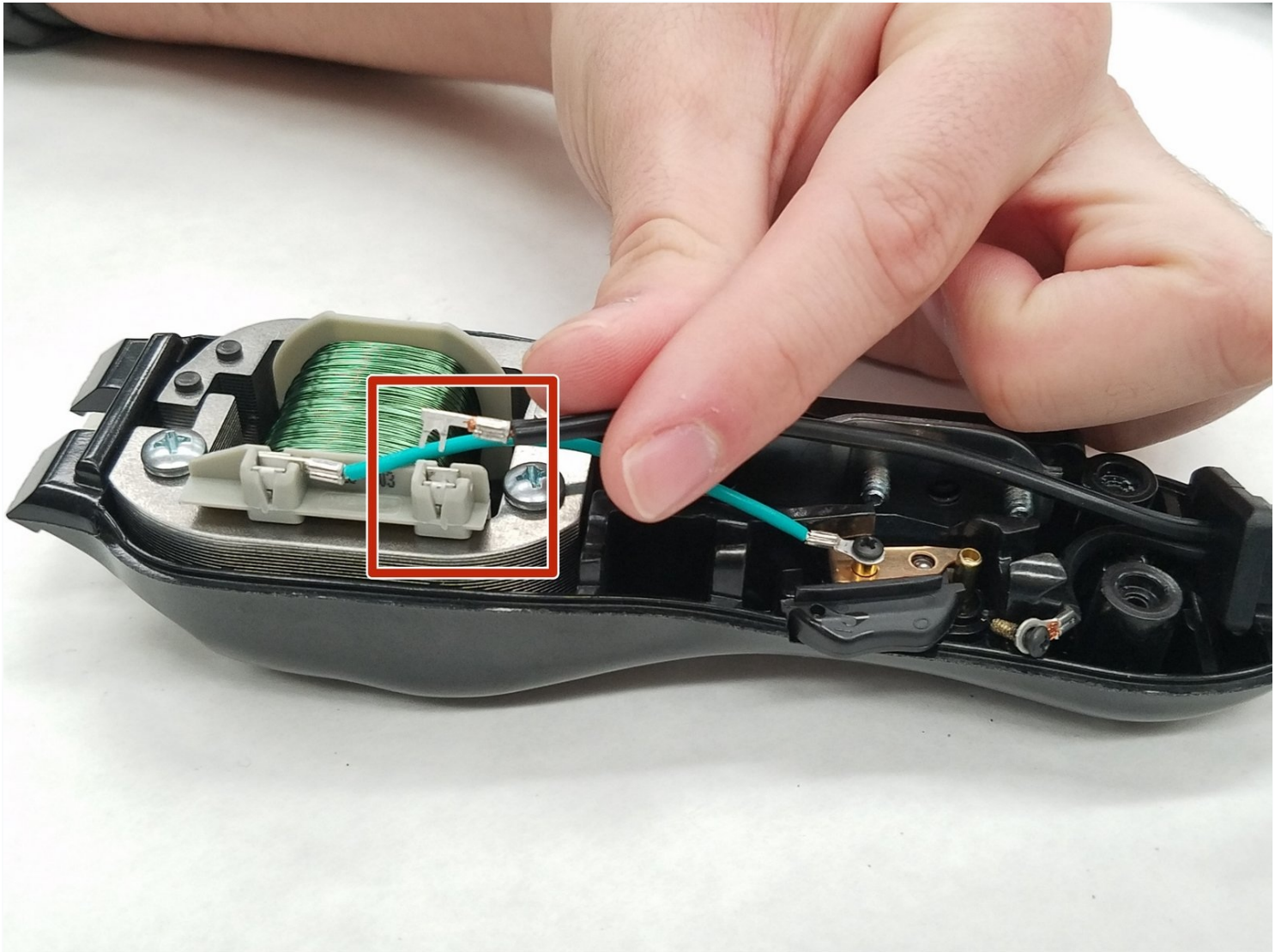




Wahl Chrome Pro Motor Replacement

The motor drives the clipper blades. Motors can...

Written By: Ashley Dale



INTRODUCTION

The motor drives the clipper blades. Motors can wear out after extended use. Replacing a worn-out motor can extend the longevity of this device.

TOOLS:

Phillips #2 Screwdriver (1)

Spudger (1)

Tweezers (1)

Phillips #1 Screwdriver (1)

Step 1 — Case



- Remove the two 5.0 mm JIS #1 screws to loosen the cutting blades.
- ⚠ Make sure your device is not connected to power before you begin.

Step 2



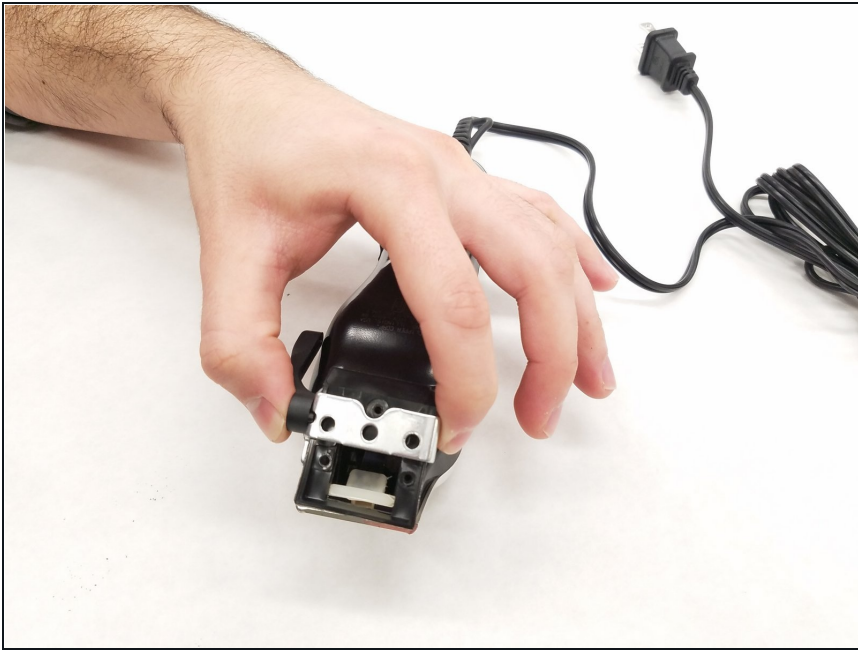
- Lift the bottom blade straight up from the device body to remove it.

Step 3



- Remove the three 9.0 mm JIS #1 screws attaching the base of the blade assembly to the body.

Step 4



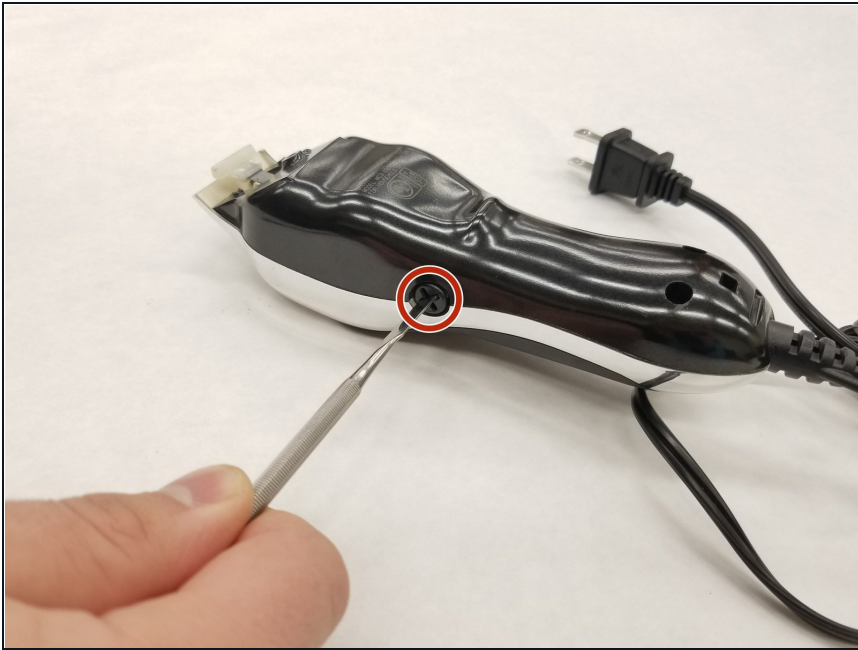
- Lift the base of blade assembly straight up off of the body.

Step 5



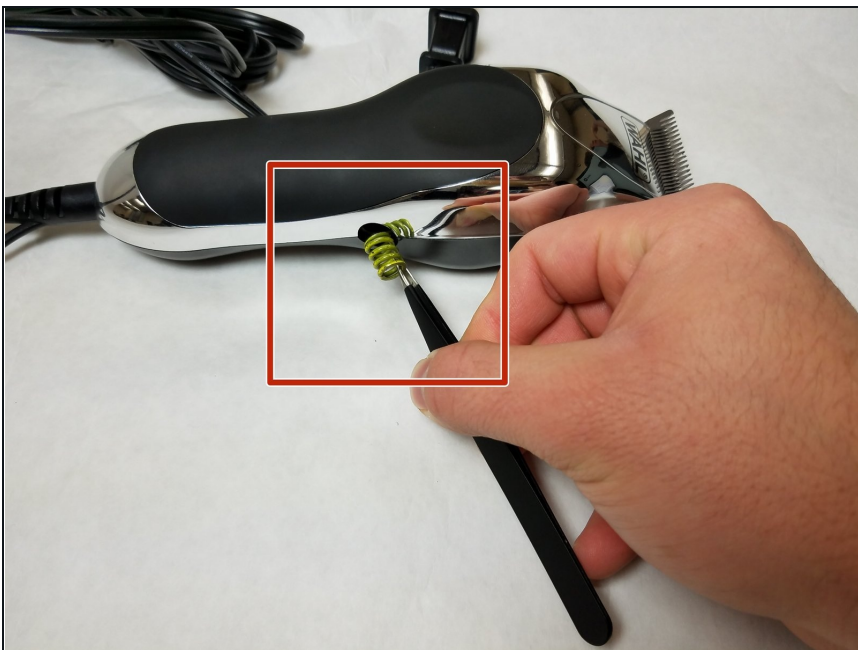
- Remove the two 12.0 mm JIS #1 screws on the back of the device body.

Step 6



- Remove the 13.0 mm Phillips #2 screw on the side of the device body.
- This screw is located on the opposite side of the body from the switch.

Step 7



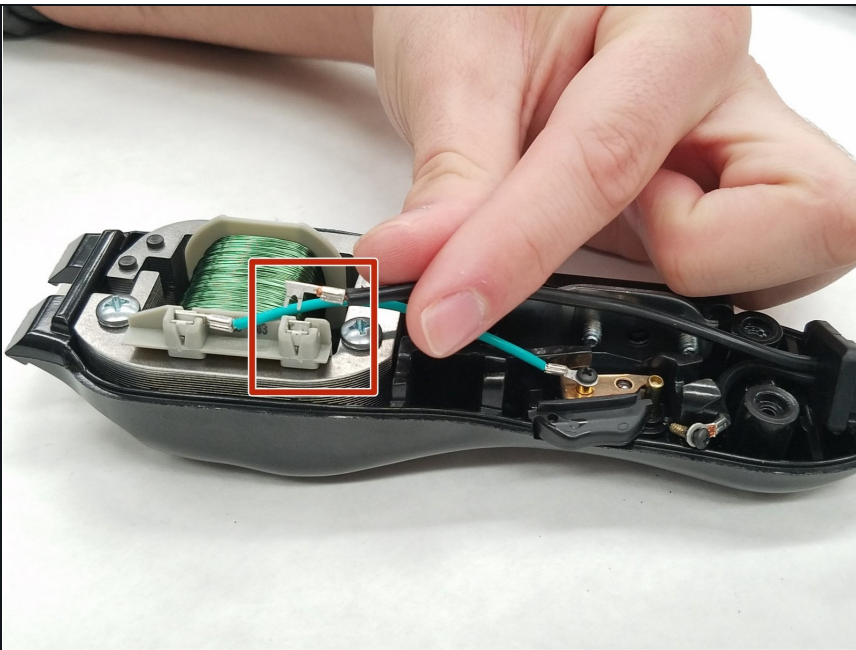
- Remove the spring on the side of the body using [tweezers](#).

Step 8



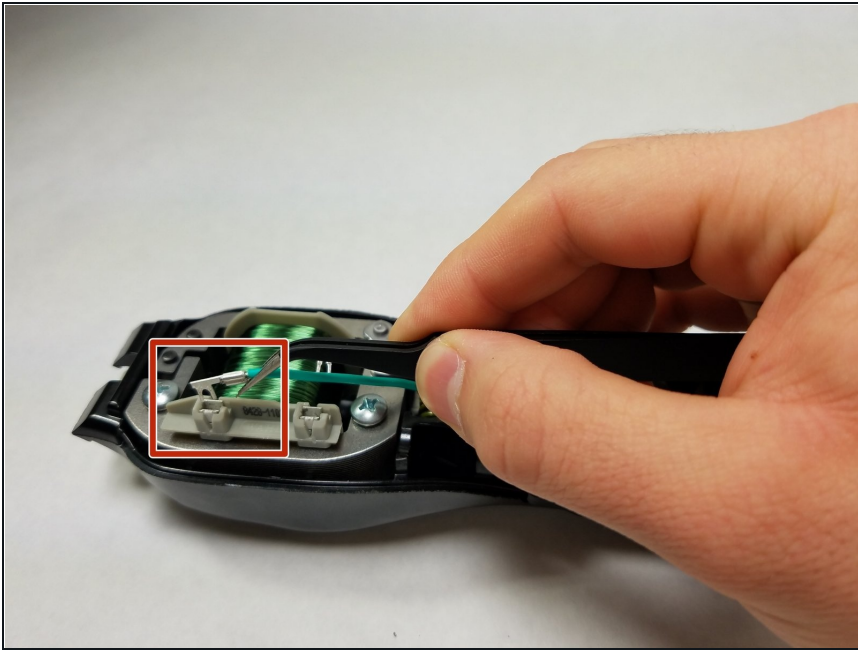
- Pry the body case off of the device using a spudger.

Step 9 — Motor



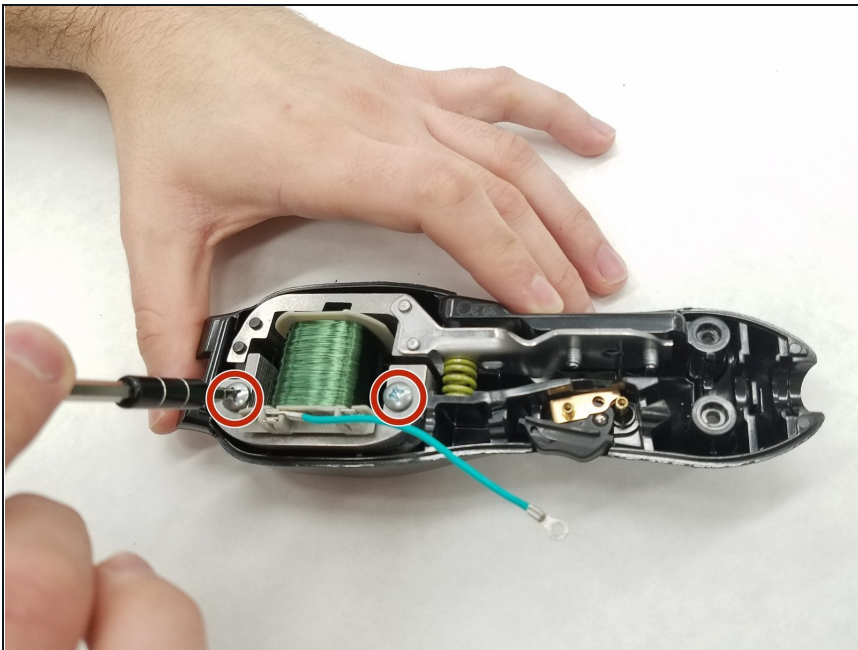
- Lift power cord tab (black wire) from slot on motor base.

Step 10



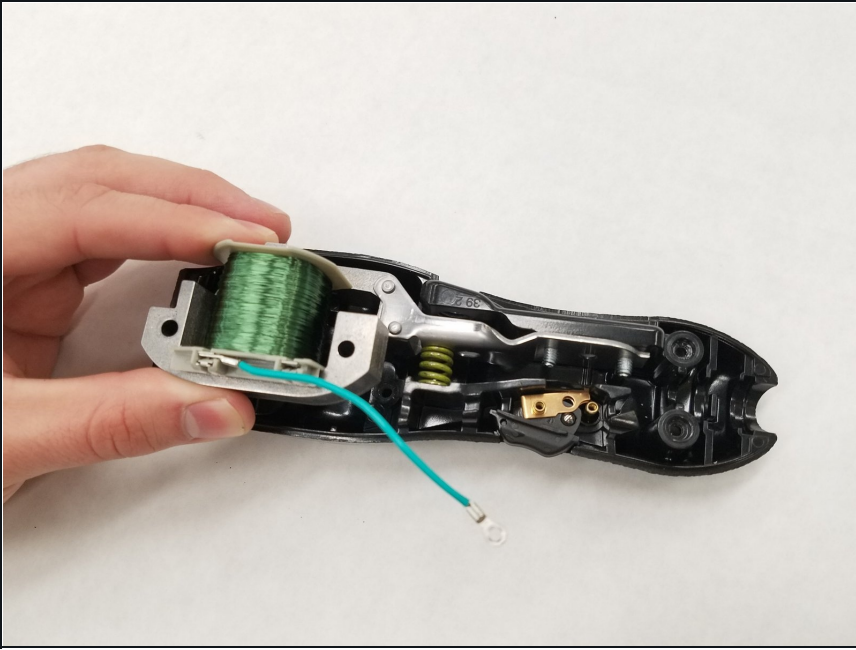
- Lift switch tab (teal wire) from slot on motor base.

Step 11



- Remove two 23.0 mm JIS #1 screws attaching motor base to device body.

Step 12



- Lift motor base straight up from device body to remove.

To reassemble your device, follow these instructions in reverse order.