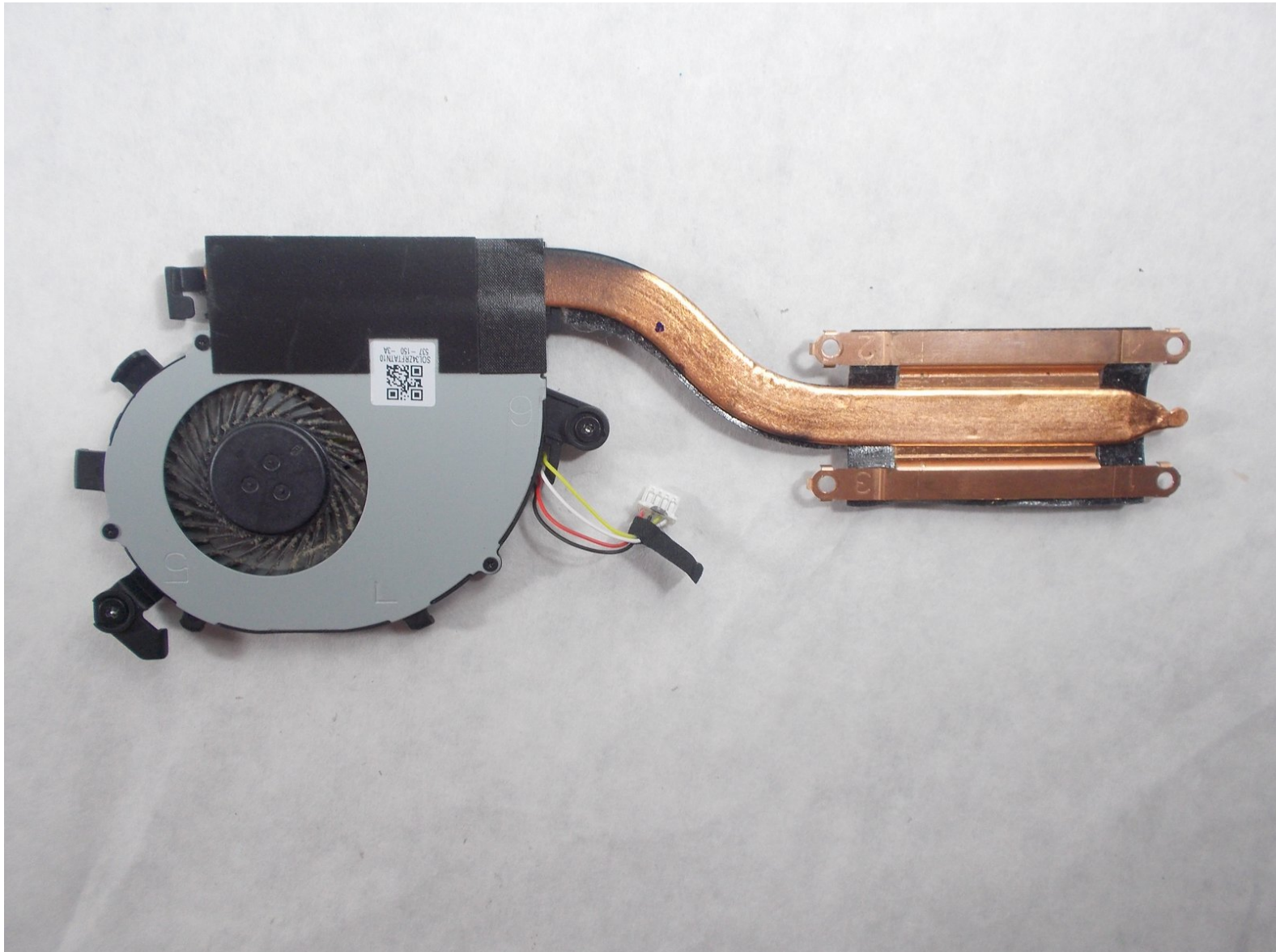




Acer Chromebook 15 CB5-571-C09S Fan Replacement

Use this guide to replace the fan in your Acer Chromebook 15 CB5-571-C09S.

Written By: Sakiynah Howard



INTRODUCTION

This guide will walk you through replacing the fan from your Acer Chromebook 15 CB5-571-C09S.

TOOLS:

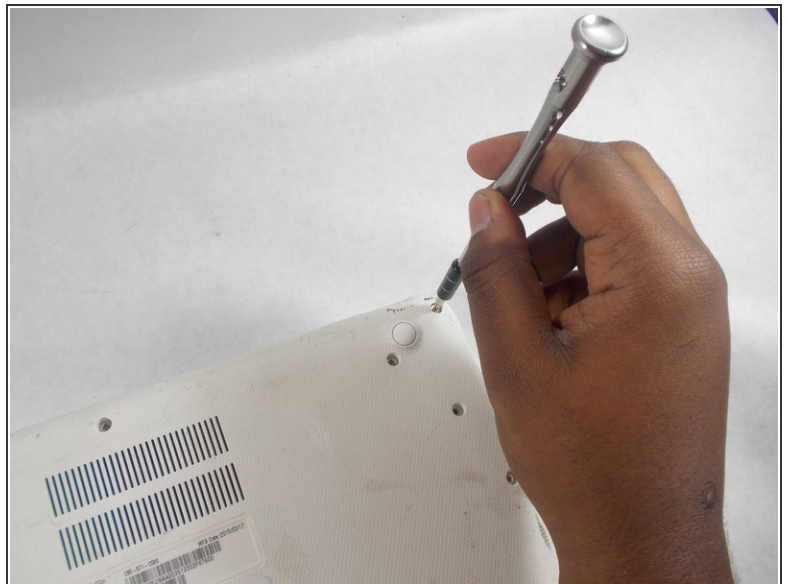
- [Phillips #0 Screwdriver](#) (1)
 - [Phillips #00 Screwdriver](#) (1)
 - [iFixit Opening Tools](#) (1)
-

Step 1 — Back Cover



- Place the device on a flat surface faced down so that the fan vents are at the top of the device.

Step 2





- Unscrew the eighteen 6 mm PH0 Phillips head screws from the back of the device.

Step 3



- Use a plastic opening tool to pry open the back cover around the edges of the device.

 Be careful not to crack or break the back cover of the device.

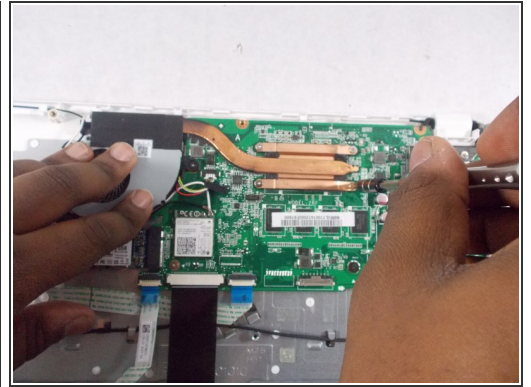
 You will have to adjust the position of the device to pry it open along all the edges.

Step 4



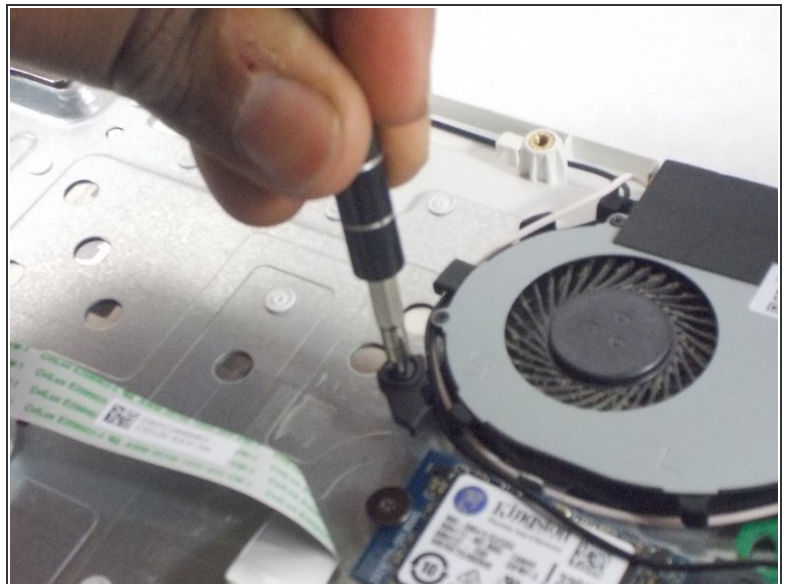
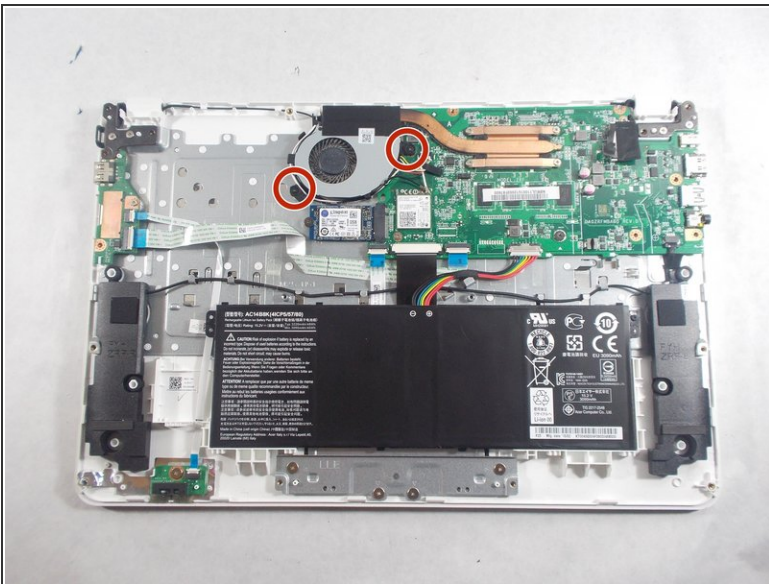
- Stand the device up with the hinges on top and carefully pull apart the back cover from the device.

Step 5 — Fan



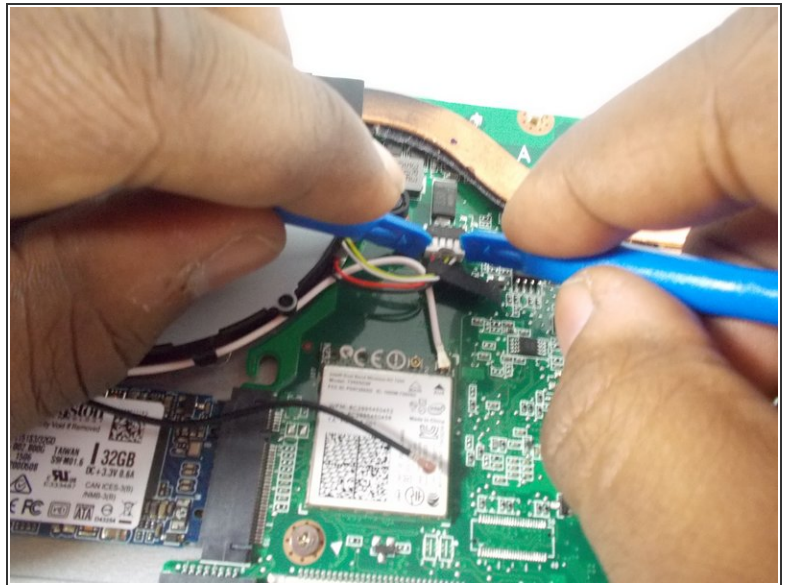
- i The fan is located at the top of the device enclosed by a grey plastic covering and is attached to the motherboard by a piece of brass colored metal.
- Unscrew the four 3 mm PH00 Phillips screws located on the corner edges of the brass colored piece of metal.

Step 6



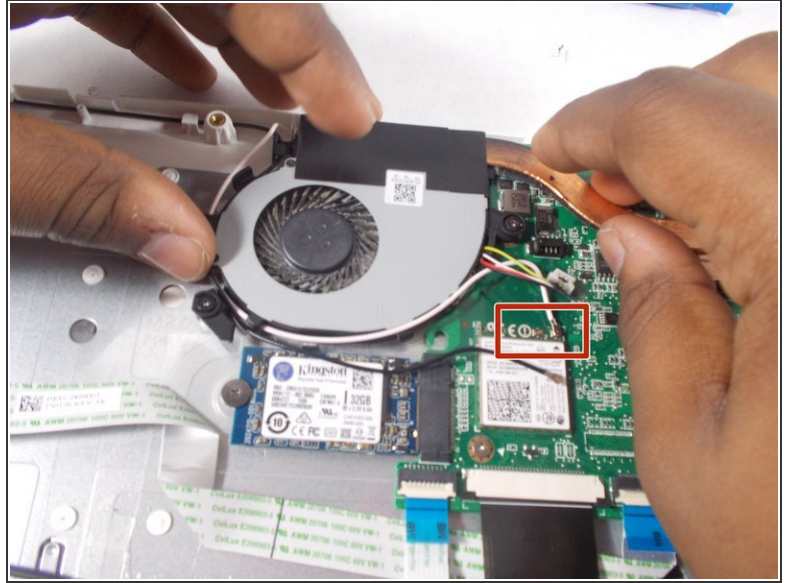
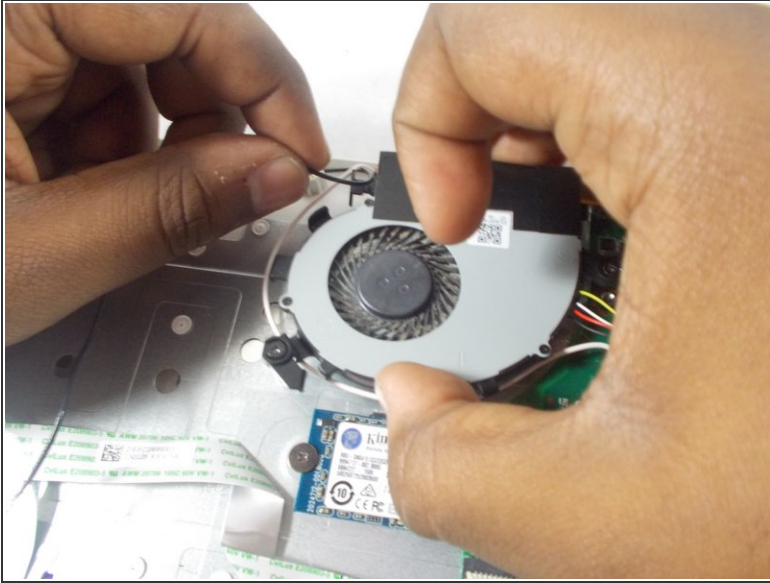
- Unscrew the two 4 mm PH00 Phillips head screws on either side of the the fan.
- ⚠ Be aware that these screw are enclosed by small pieces of plastic and are not to be removed from the fan cover.

Step 7



- Disconnect the fan connector from the motherboard using two plastic opening tools.
- ⓘ The fan connector is the white "plug" that connects the battery to the motherboard with yellow, white, red and black wires attached to it.

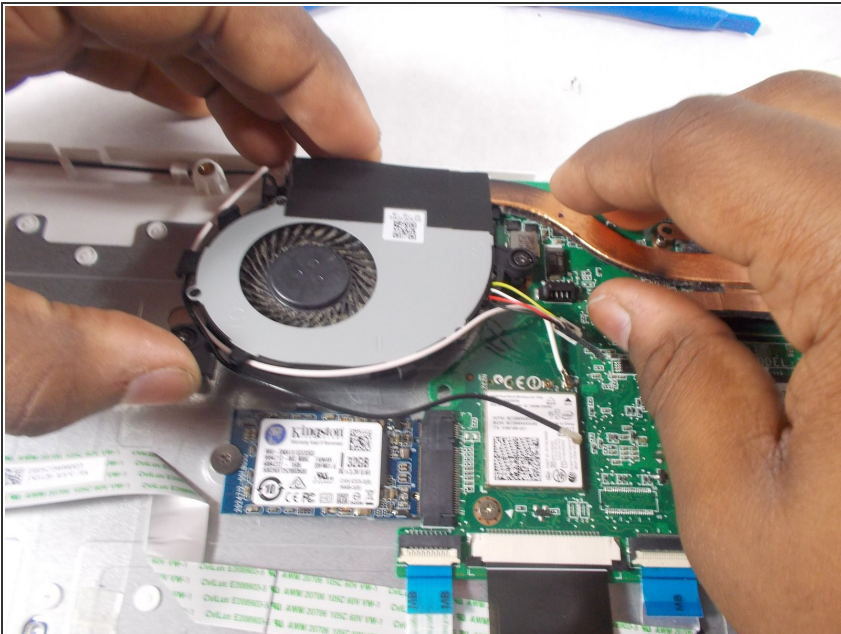
Step 8



- Carefully unwrap the black and white wires from around the fan cover.

⚠ Be careful not to remove the wires from the Intel Dual Band Wireless-AC 7260 ports located just beneath the fan connector.

Step 9



- Grab the fan by its cover and the brass colored piece of metal and carefully lift up and pull out the fan from the device.

To reassemble your device, follow these instructions in reverse order.