



# Asus VivoBook X540SA-BPD0602V Wireless Card Removal

In this guide you will learn how to replace...

Written By: Jessica Browne



## INTRODUCTION

In this guide you will learn how to replace your Asus Vivobook X540SA-BPD0602V's wireless card. Problems with the wireless card will lead to issues connecting to your router and the internet. If being tied down to an ethernet cable is not an option, the wireless card has to be replaced.



### TOOLS:

- [JIS #00 Screwdriver](#) (1)
  - [Phillips #1 Screwdriver](#) (1)
  - [iFixit Opening Tool](#) (1)
  - [Phillips #00 Screwdriver](#) (1)
-

## Step 1 — Keyboard



- Power down the laptop using the device's power button in top right corner of the keyboard. Ensure that the device's power cord is disconnected.

## Step 2



- Flip the laptop over so the back panel is displayed.



## Step 3



- Using a Phillips #1 screwdriver, remove the ten screws from the back panel.
- Remove the two battery screws (15.6 mm)
- Two top corner screws (12.5 mm)
- Six case screws (9.7mm)

## Step 4



- Flip the laptop back over and open it, revealing the screen and keyboard.

## Step 5

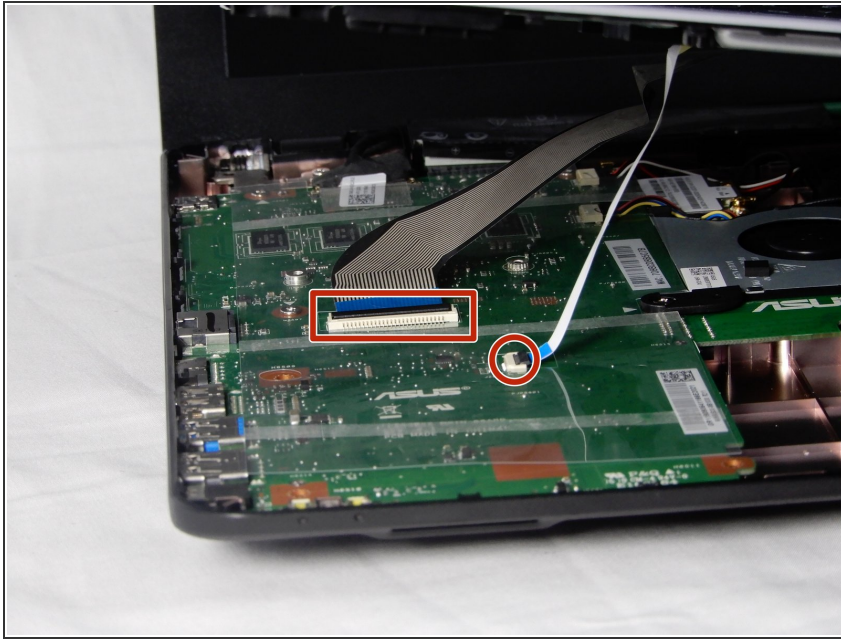


- Using the blue plastic opening tool, wedge and loosen the seal all the way around the edges. Carefully lift up the keyboard panel.

**⚠ When lifting the keyboard panel, do not lift it all the way as the two connection ribbons to the motherboard must be disconnected.**

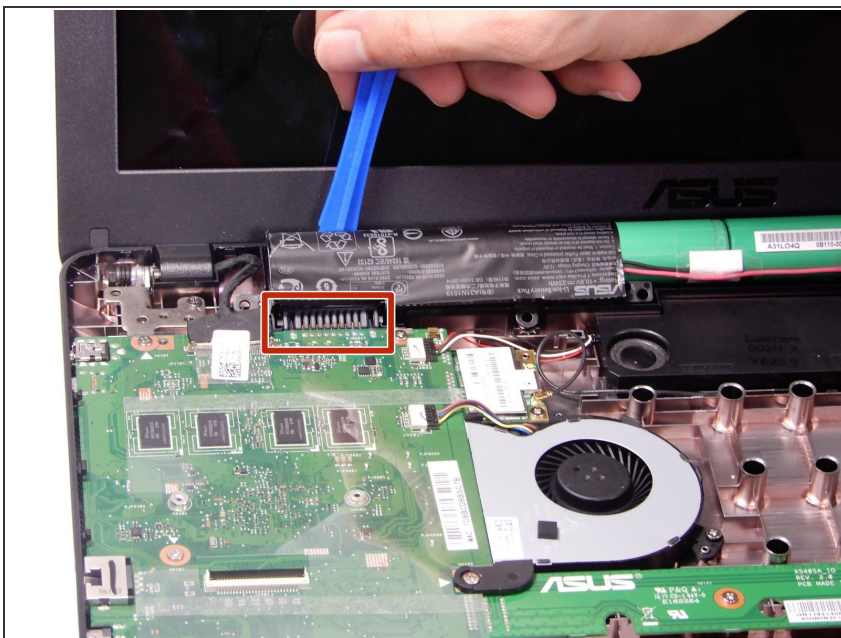
- ① It is recommended to break the seal of the case starting at the upper corners closest to the display monitor .

## Step 6



- Observe where the ribbons connect to the motherboard, there are two connections. Each connection has a black clamp. To remove the ribbon, lift the black clamp up to disconnect it.

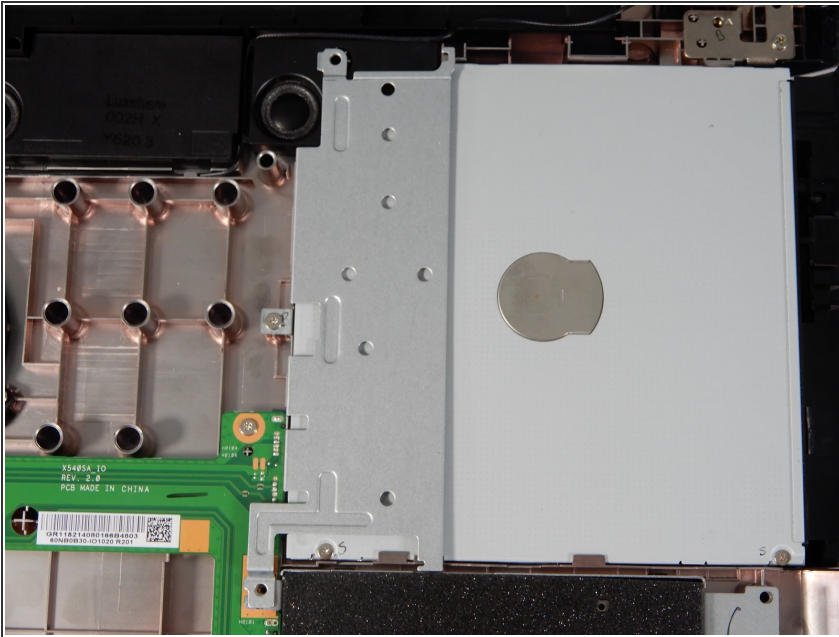
## Step 7 — Battery



- Very carefully, remove the batteries with the blue plastic iFixit opening tool. Focus removing the battery near the highlighted area.
- ⓘ The batteries should all be connected to one another and come out of the device as a single unit.
- ⚠ Be careful not to rip any of the black plastic covering the batteries. Exposed battery parts can lead to explosions. If the case is ripped, re-wrap them, or properly dispose of them. Do not reuse them.

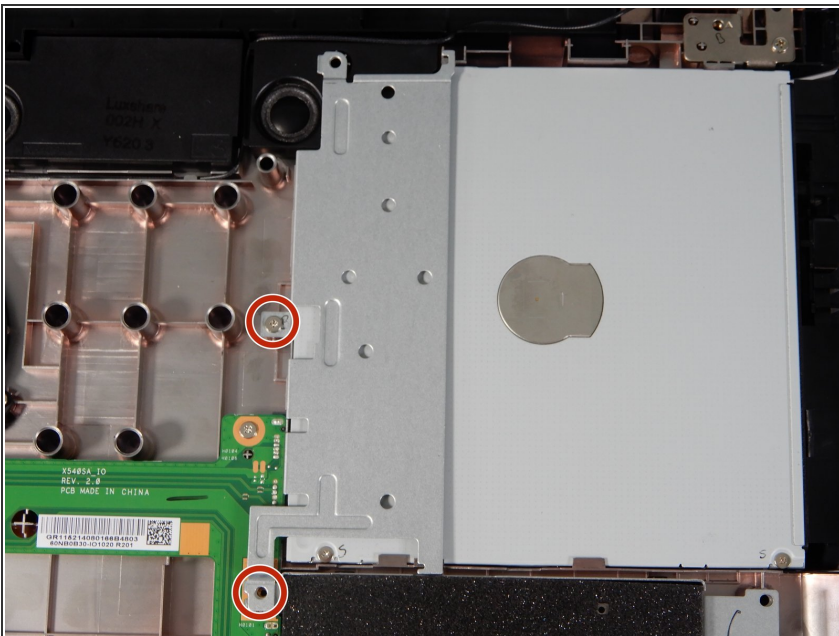


## Step 8 — Disk Drive



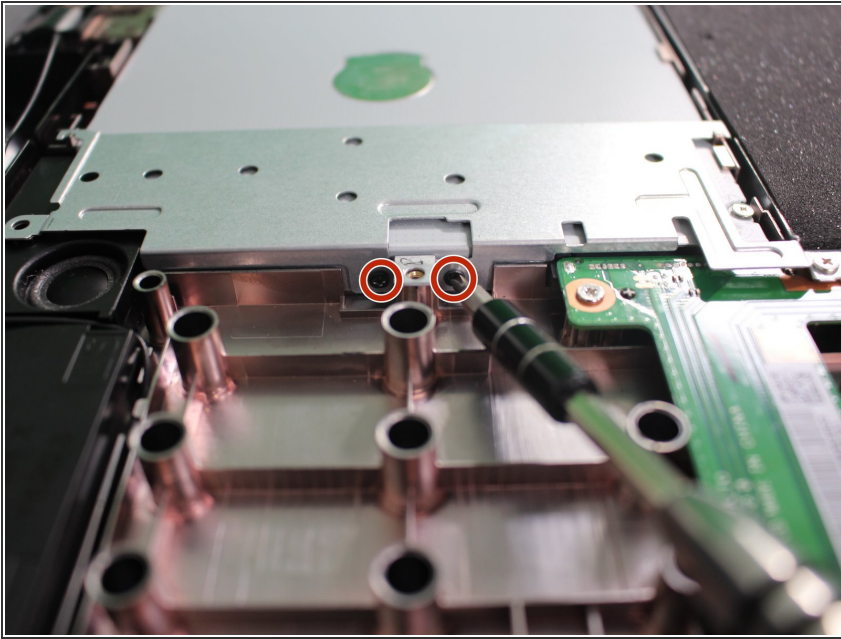
- The Disk Drive is located within the upper right hand corner of the laptop.

## Step 9



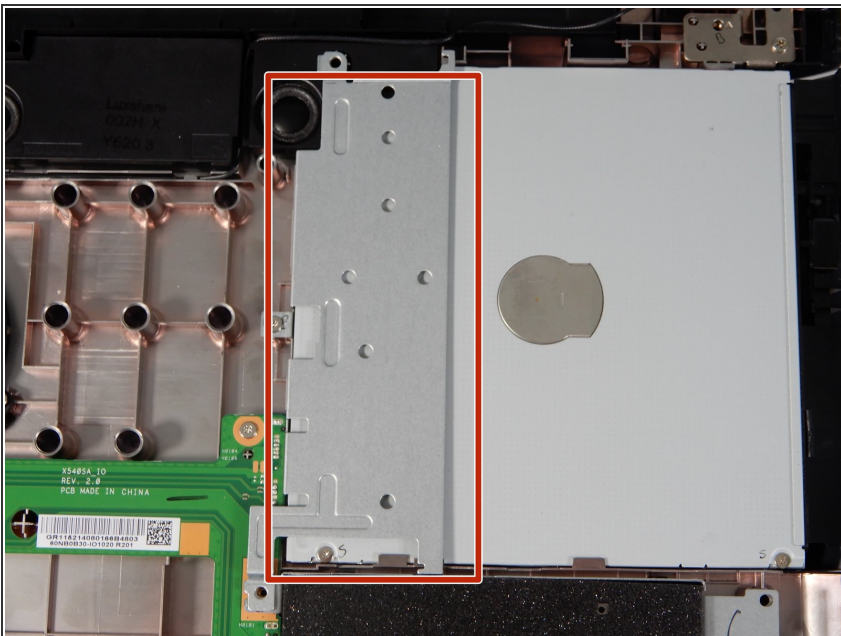
- Using a Phillips #0 screwdriver, remove the two screws (5.6 mm) around the disc drive.
- ☑ Note which screws go where. The two smaller screws fasten onto the disc drive, while the three larger screws secure the drive on the outside.

## Step 10



- Use the Phillips #00 screwdriver to remove the two screws (2.7 mm) on the side of the disc drive fastener.

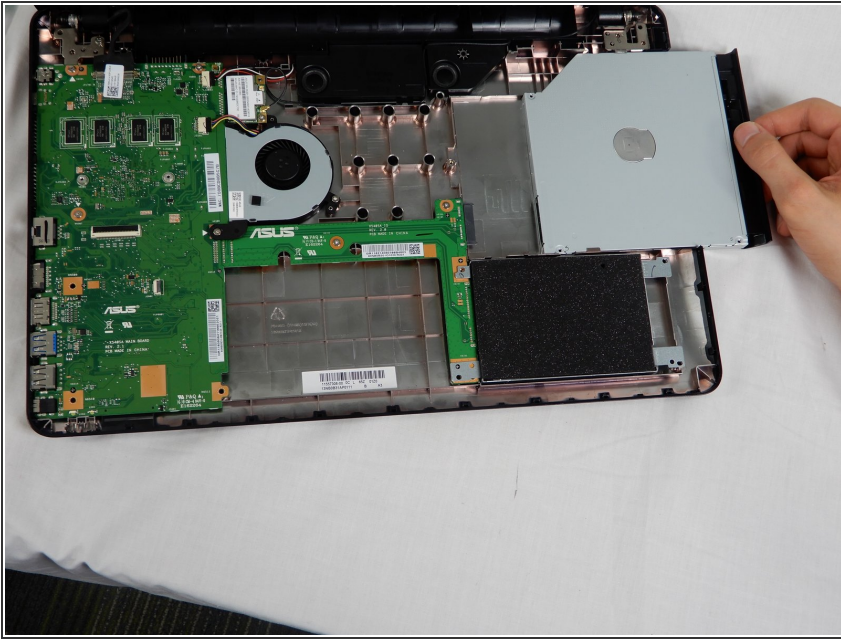
## Step 11



- After removing the seven screws, lift the metal fastener from the disc drive with the plastic opening tool.

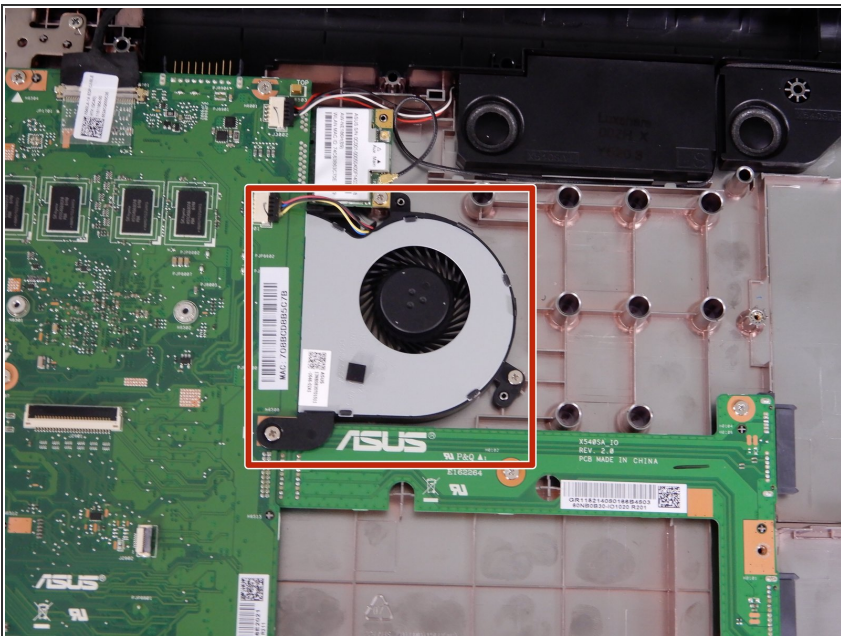


## Step 12



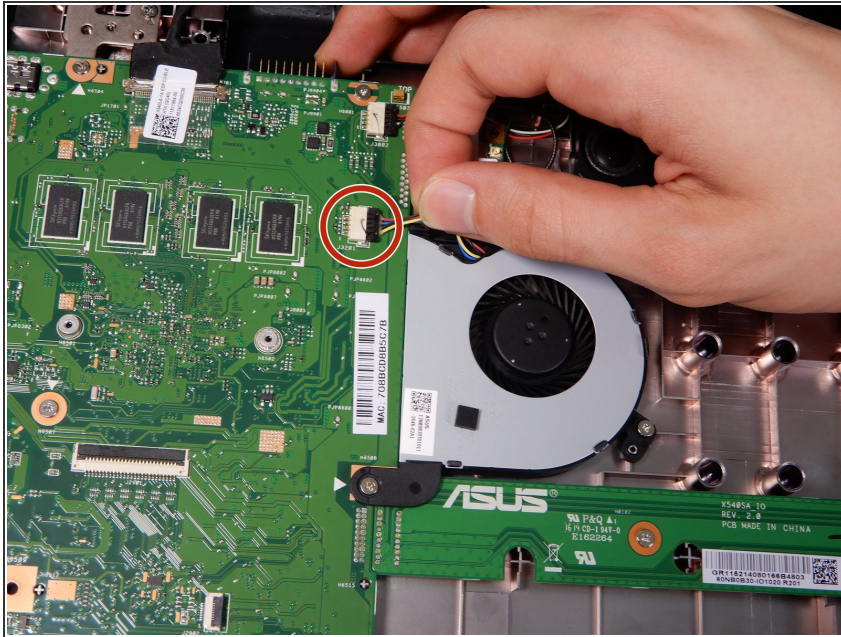
- Slide the disc drive to the right, removing it from the laptop case.

## Step 13 — Fan



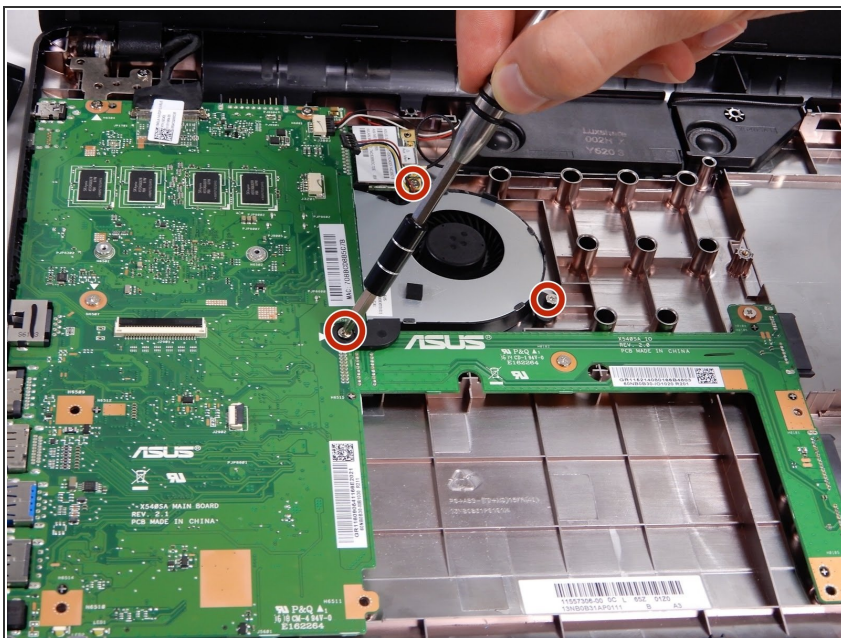
- The fan is located near the upper left hand corner of the device, connected to the motherboard and right beneath the wireless card.

## Step 14



- There is a bundle of wires connecting the fan to the motherboard. Disconnect them.

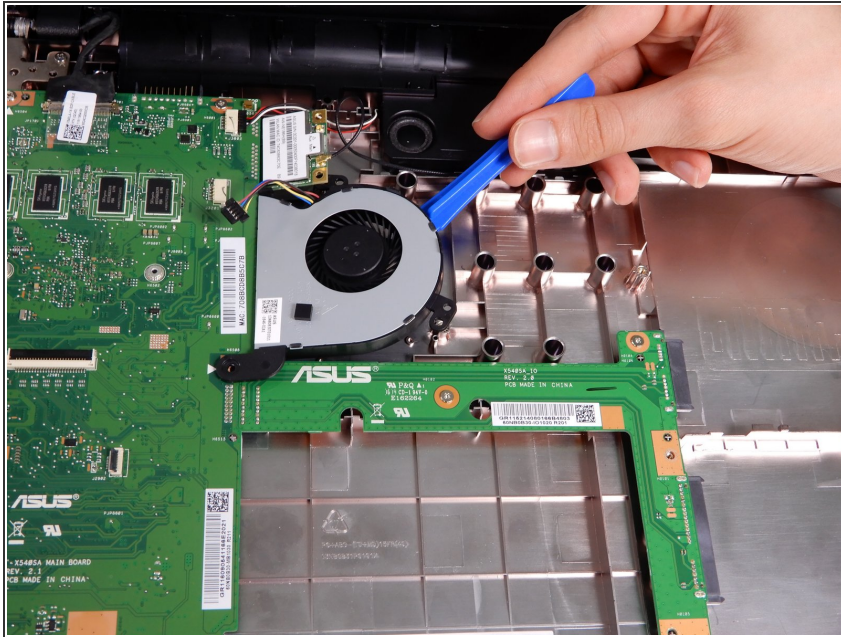
## Step 15



- Using the J00 screw bit in the iFixit tool kit, remove the three screws securing the fan to the case. One screw connected to the bottom case (4cm), one connected to the motherboard (4cm), and one screw connected to the Wireless Card (5cm).



## Step 16



- Carefully remove the fan from the case using the blue iFixit opening tool.

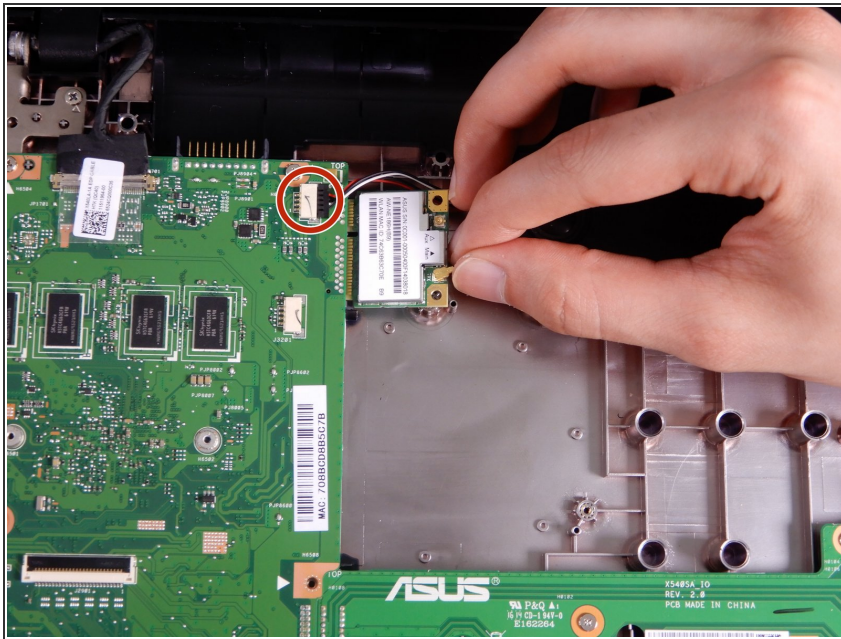
## Step 17 — Wireless Card



- The wireless card is located in the upper left portion of the device case, right above the fan and attached to the motherboard.

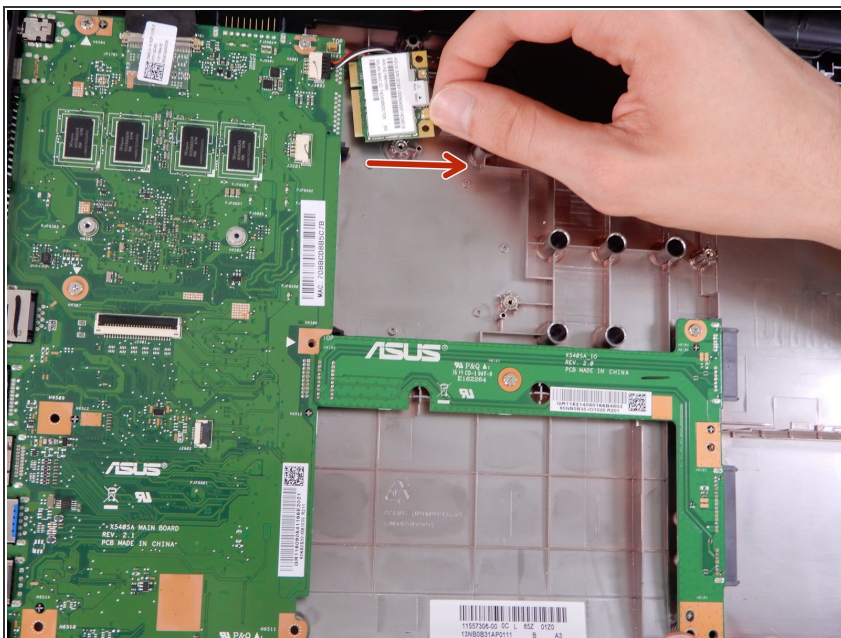


## Step 18



- There is only one cable connecting the wireless card to the antenna. Disconnect it.

## Step 19



- Carefully slide the wireless card to the right, and remove it from the device.

To reassemble your device, follow these instructions in reverse order.