



Philips Sonicare 2 Series Circuit Board Replacement

This guide are steps for replacing the circuit board for the Philips Sonicare 2 Series.

Written By: Jonathan Jarvis



INTRODUCTION

This guide will show you how to replace the circuit board for the Philips Sonicare 2 Series toothbrush. He is a link for a guide how to soldering which will be needed for this guide. [How To Solder and Desolder Connections](#)



TOOLS:

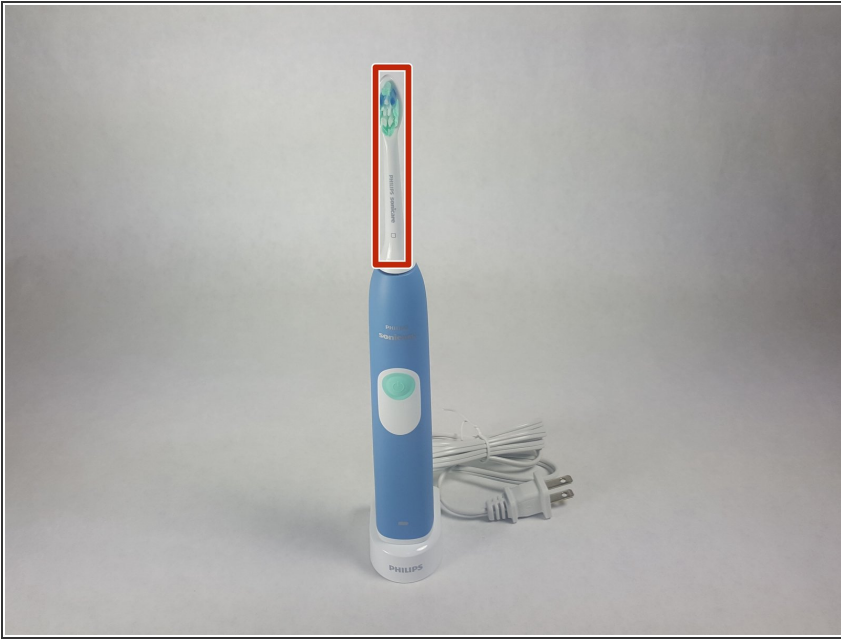
- [Precision Tweezers Set](#) (1)
- [iFixit Opening Tool](#) (1)
- [Metal Spudger](#) (1)
- [Flathead 3/32" or 2.5 mm Screwdriver](#) (1)
- [64 Bit Driver Kit](#) (1)



PARTS:

- [Philips Sonicare 2 Series Circuit Board](#) (1)

Step 1 — Philips Sonicare 2 Series Disassembly



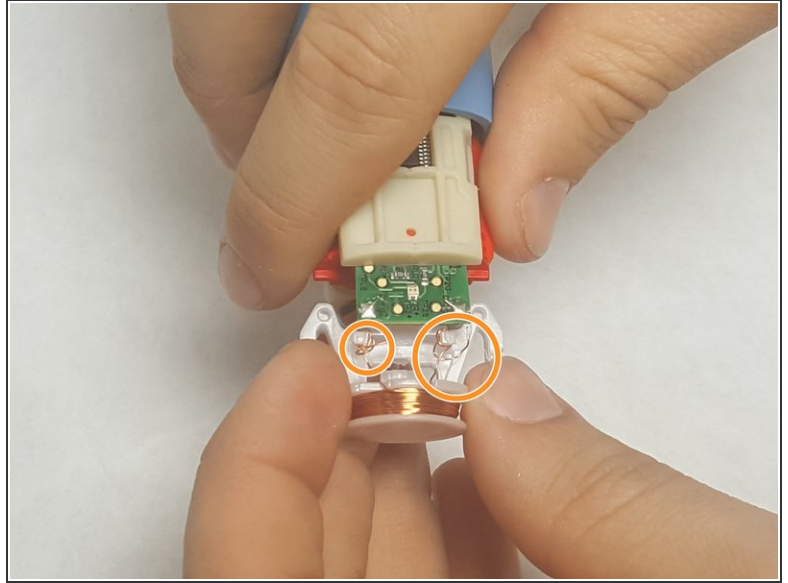
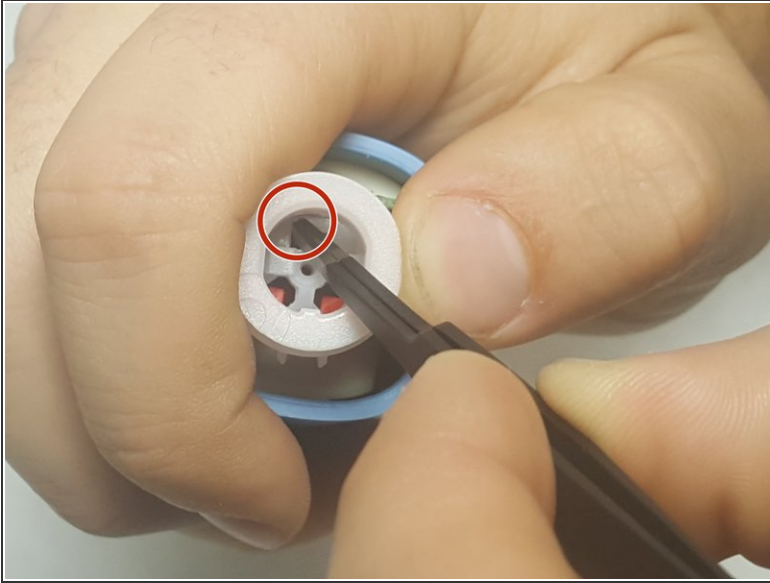
- Pull upwards to remove the brush head from the top of the device.

Step 2



- Remove the 12 mm T8 Torx screw from the bottom of the toothbrush. After removing the screw, pry off the base with a plastic opening tool.

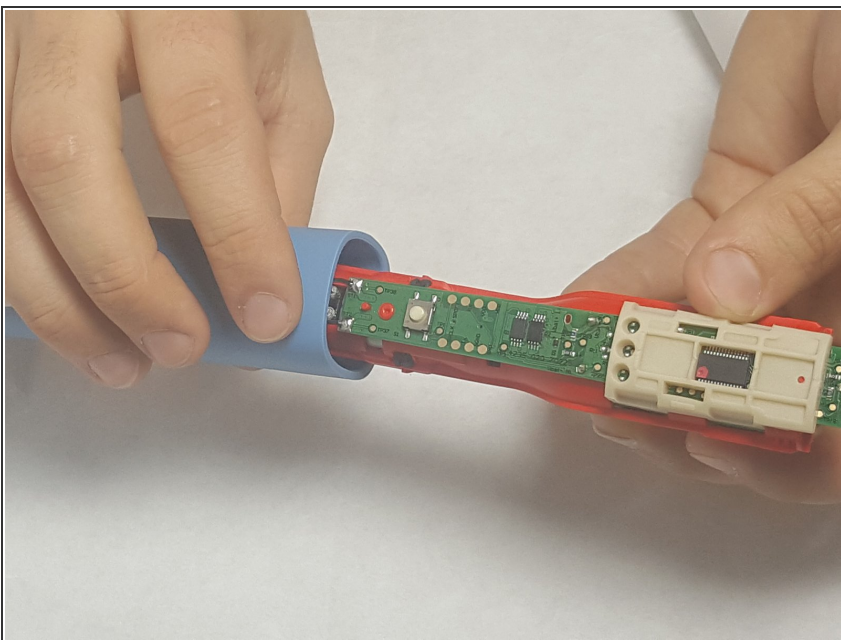
Step 3



- Remove the internal electronic mechanism from the housing by prying the red clips shown in the figure. This removes the charging port.

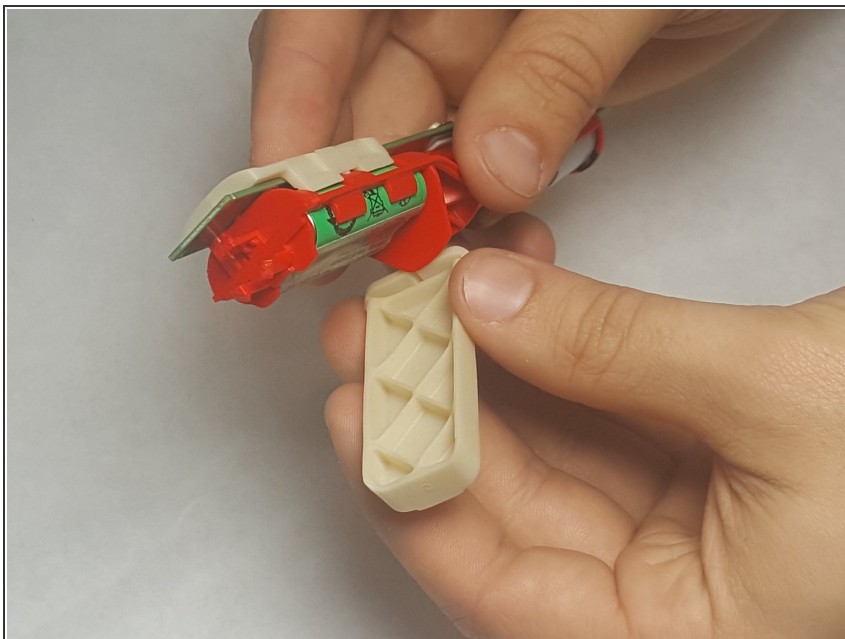
⚠ Be very careful not to damage the charging port during this step. Otherwise you will have to solder this part back to the device as shown in the second figure.

Step 4



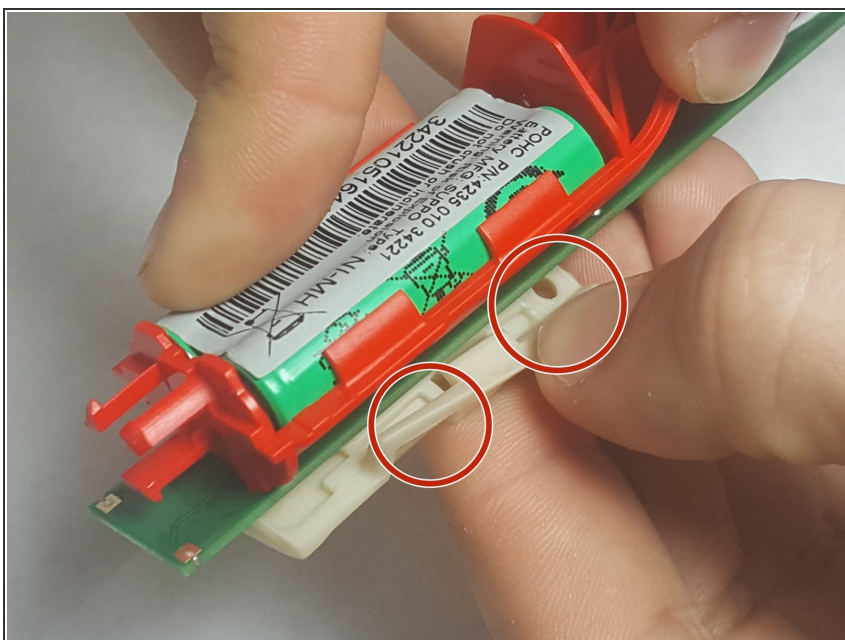
- Next you will be able to remove the internal electronic mechanism as shown in the figure.

Step 5



- Remove the white battery cover as shown in the figure.

Step 6



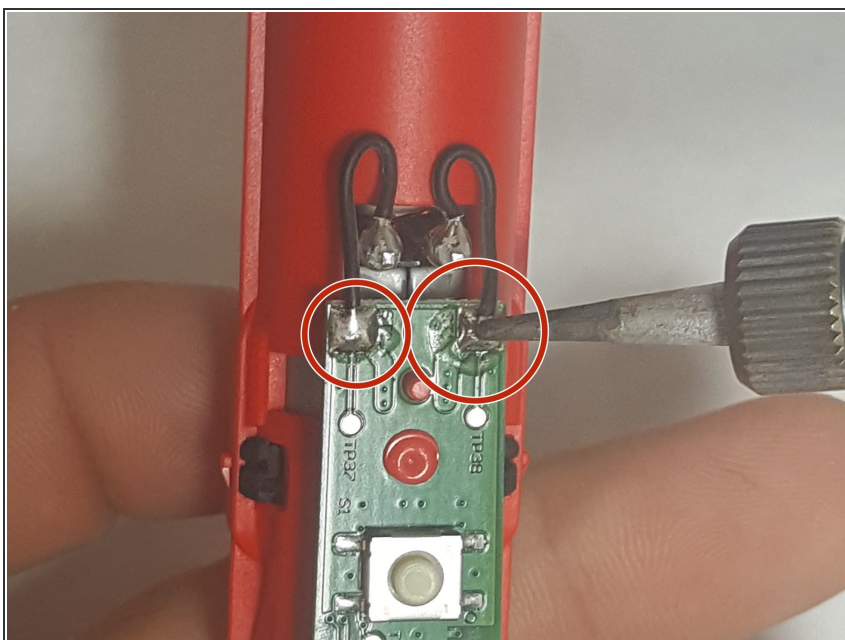
- Remove the white circuit board cover as shown. This cover will require you to pry off the piece from the grooves .

Step 7 — Circuit Board



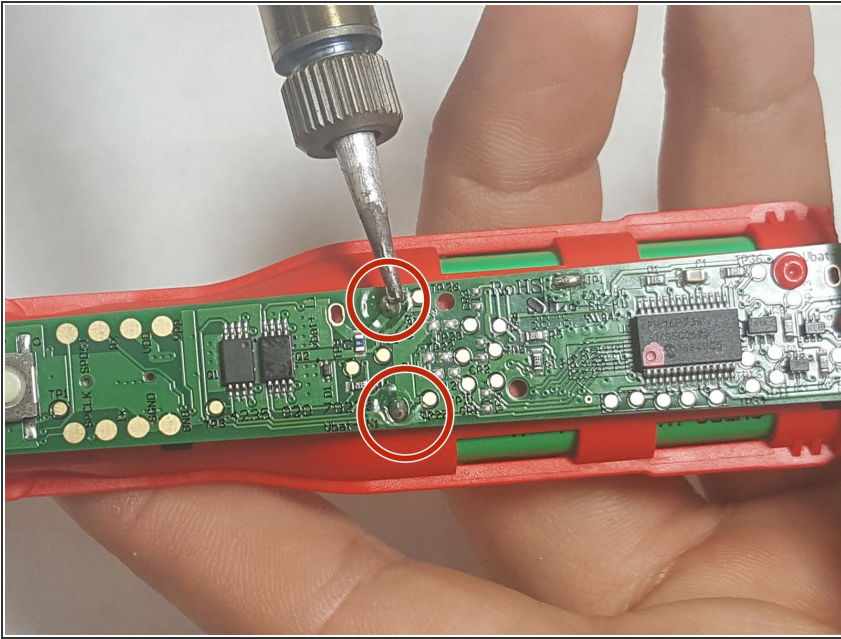
- Pry away the battery using an opening tool from the battery housing. This will break the circuit and avoid electric shock.

Step 8



- [Desolder](#) the circuit board from the motor as shown.

Step 9



- Desolder the circuit board from the housing as shown to remove the board

To reassemble your device, follow these instructions in reverse order.