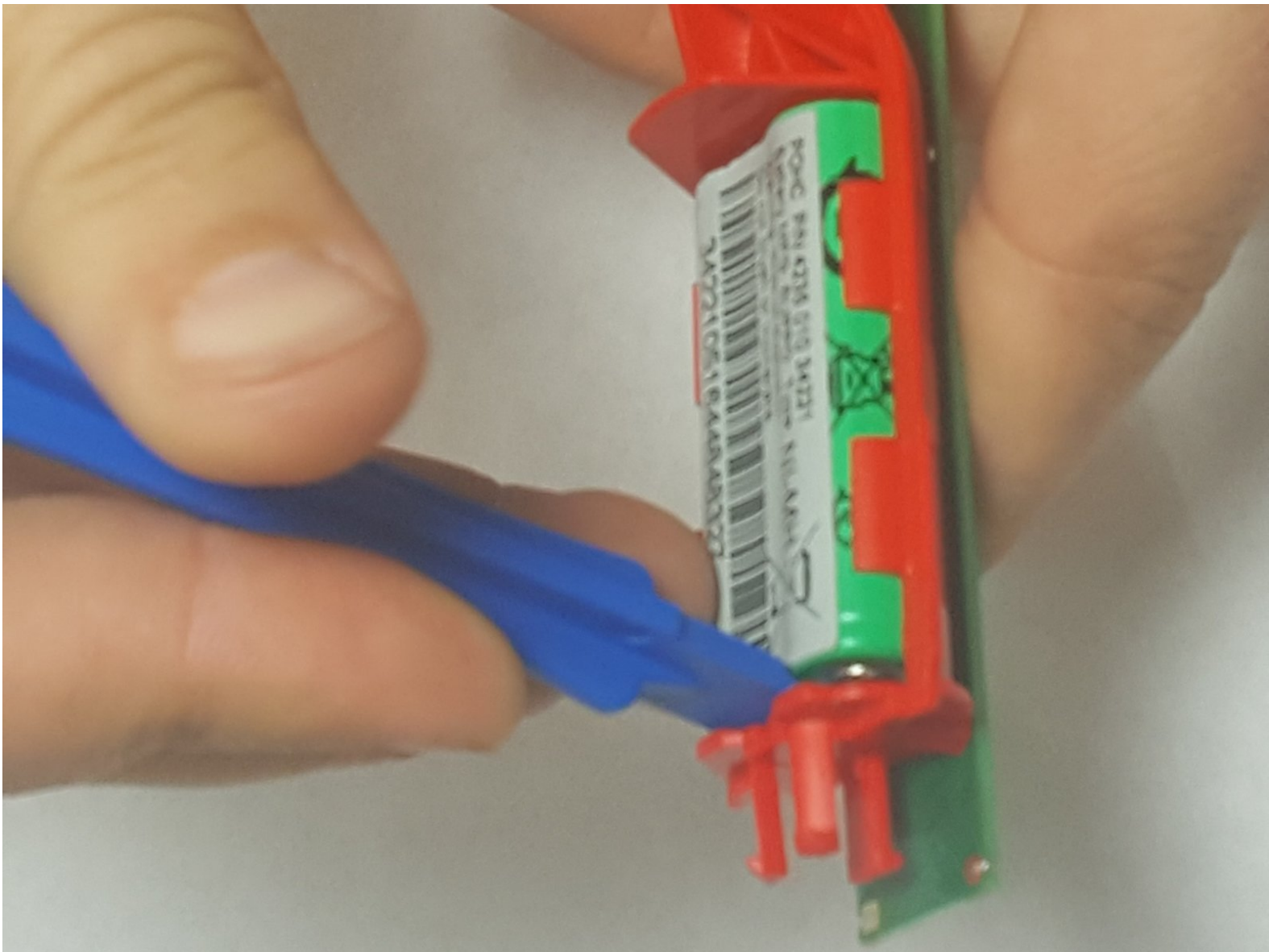




Philips Sonicare 2 Series Battery Replacement

Use this guide to replace a worn-out battery on your Philips Sonicare 2 Series toothbrush.

Written By: Jonathan Jarvis



INTRODUCTION

Use this guide to replace a worn-out battery on your Philips Sonicare 2 Series (Model HX62**-**) toothbrush. This procedure requires soldering. If you don't know how to solder, use [this guide](#).



TOOLS:

- [Soldering Workstation](#) (1)
- [TR8 Torx Security Screwdriver](#) (1)



PARTS:

- [Philips Sonicare 2 Series Battery](#) (1)

Step 1 — Philips Sonicare 2 Series Disassembly



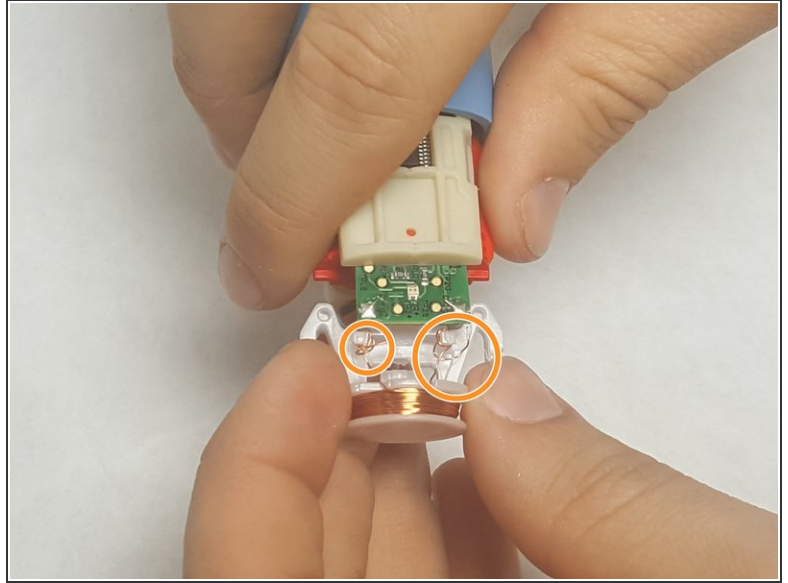
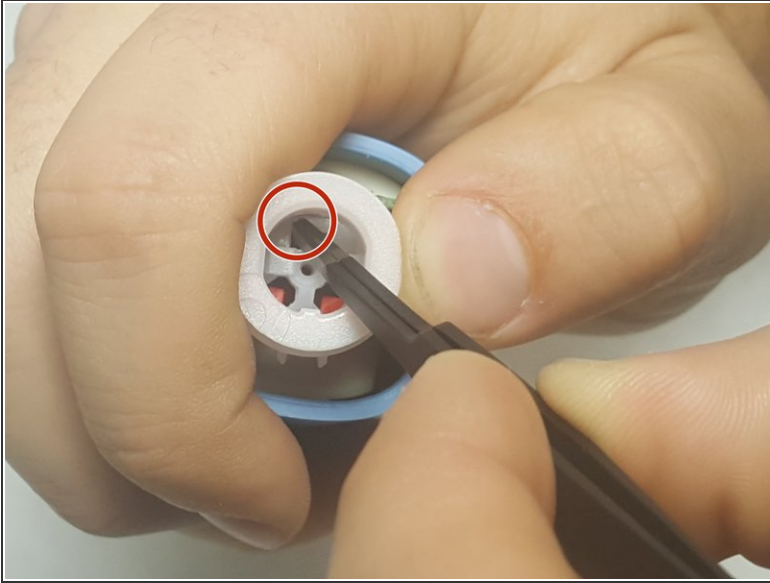
- Pull upwards to remove the brush head from the top of the device.

Step 2



- Remove the 12 mm T8 Torx screw from the bottom of the toothbrush. After removing the screw, pry off the base with a plastic opening tool.

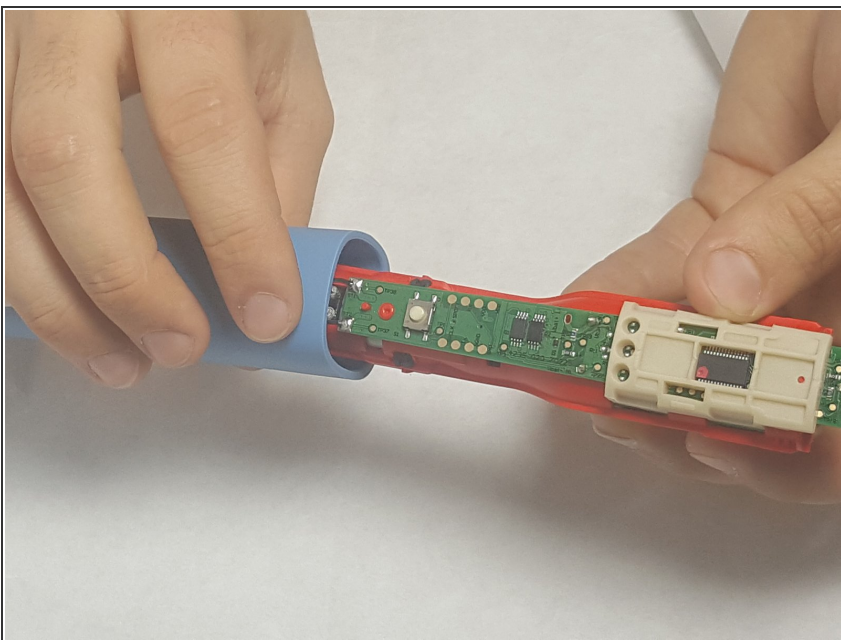
Step 3



- Remove the internal electronic mechanism from the housing by prying the red clips shown in the figure. This removes the charging port.

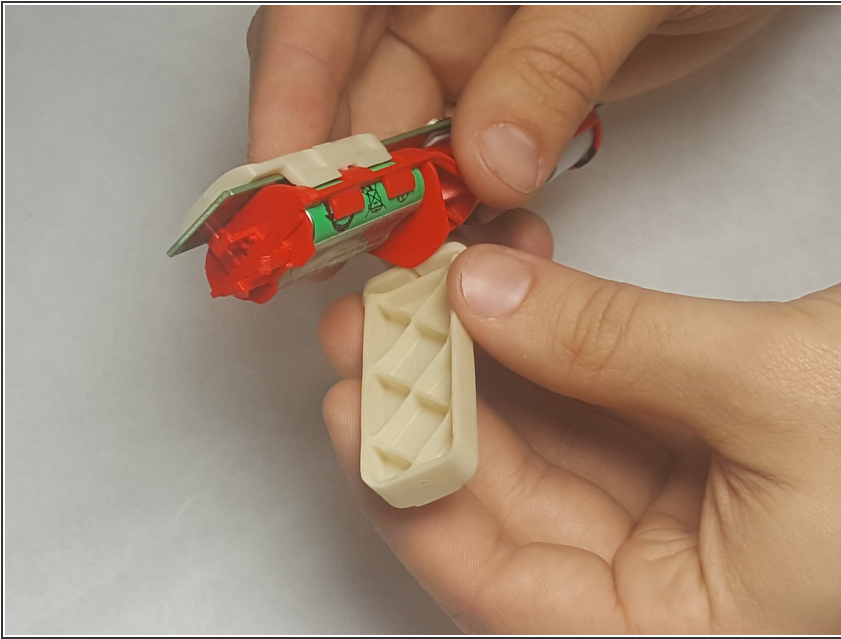
⚠ Be very careful not to damage the charging port during this step. Otherwise you will have to solder this part back to the device as shown in the second figure.

Step 4



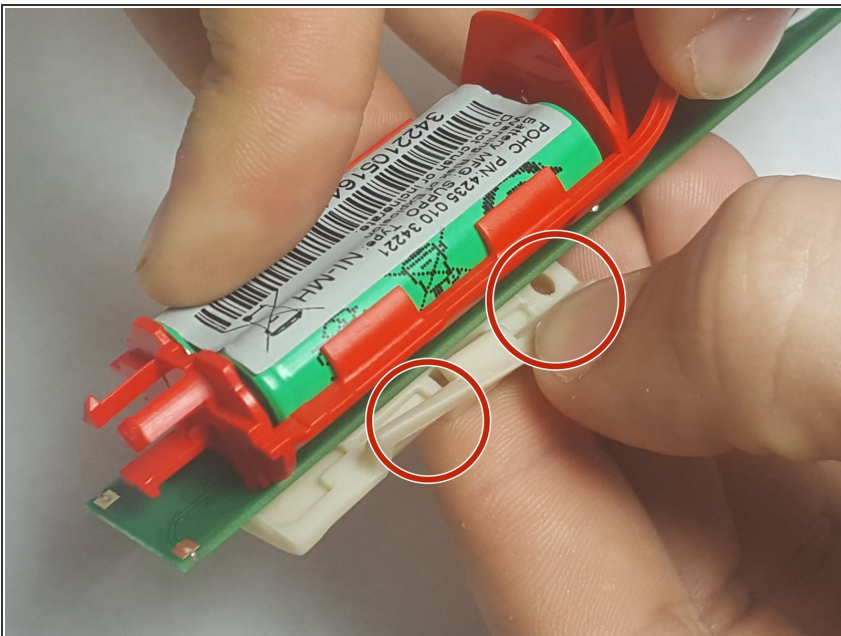
- Next you will be able to remove the internal electronic mechanism as shown in the figure.

Step 5



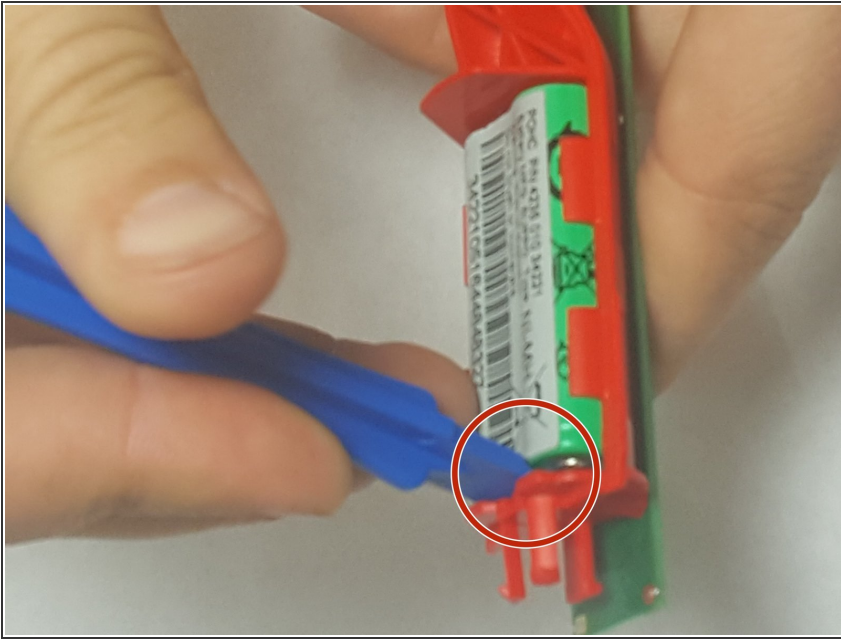
- Remove the white battery cover as shown in the figure.

Step 6



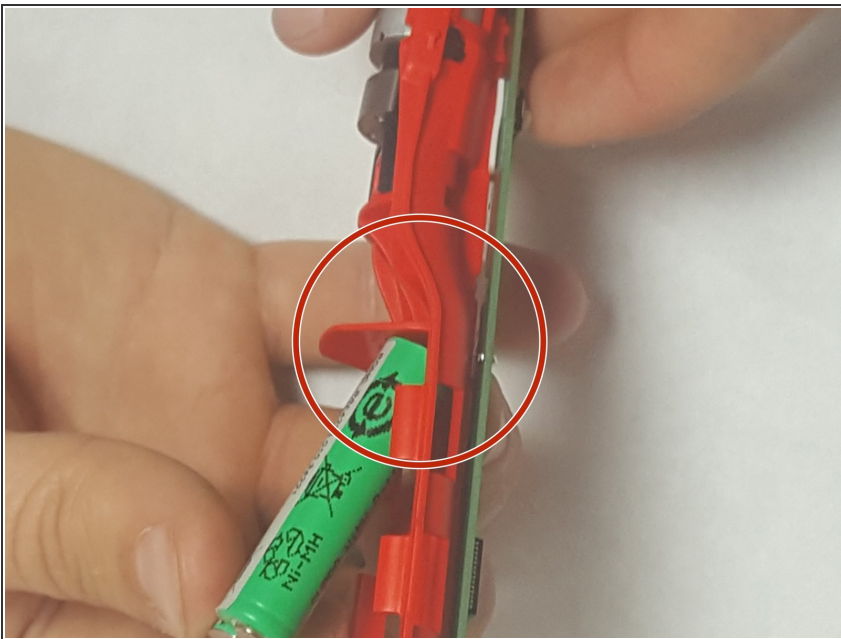
- Remove the white circuit board cover as shown. This cover will require you to pry off the piece from the groves .

Step 7 — Battery



- Use a plastic spudger to pry the battery up at an angle, partially removing it from the internal frame.
- ⓘ This won't completely remove the battery, as it is still soldered to the mainboard.
- ⚠ Do not use a metal pry tool to complete this step. You may puncture the battery pack, possibly leading to leakage, fire, or explosion.

Step 8



- Desolder the two indicated battery connections on the mainboard.

Step 9



- Well, the VOLTAGE of this battery is about 2.8 to 2.9 Volts. The size is same as that of TWO AAA Cells. Two AAA in series can easily replace the existing battery. Ni-Mh AAA cells of Energizer can do the job. Disconnect the existing battery but don't remove the metallic connection to the circuit.

To reassemble your device, follow these instructions in reverse order.