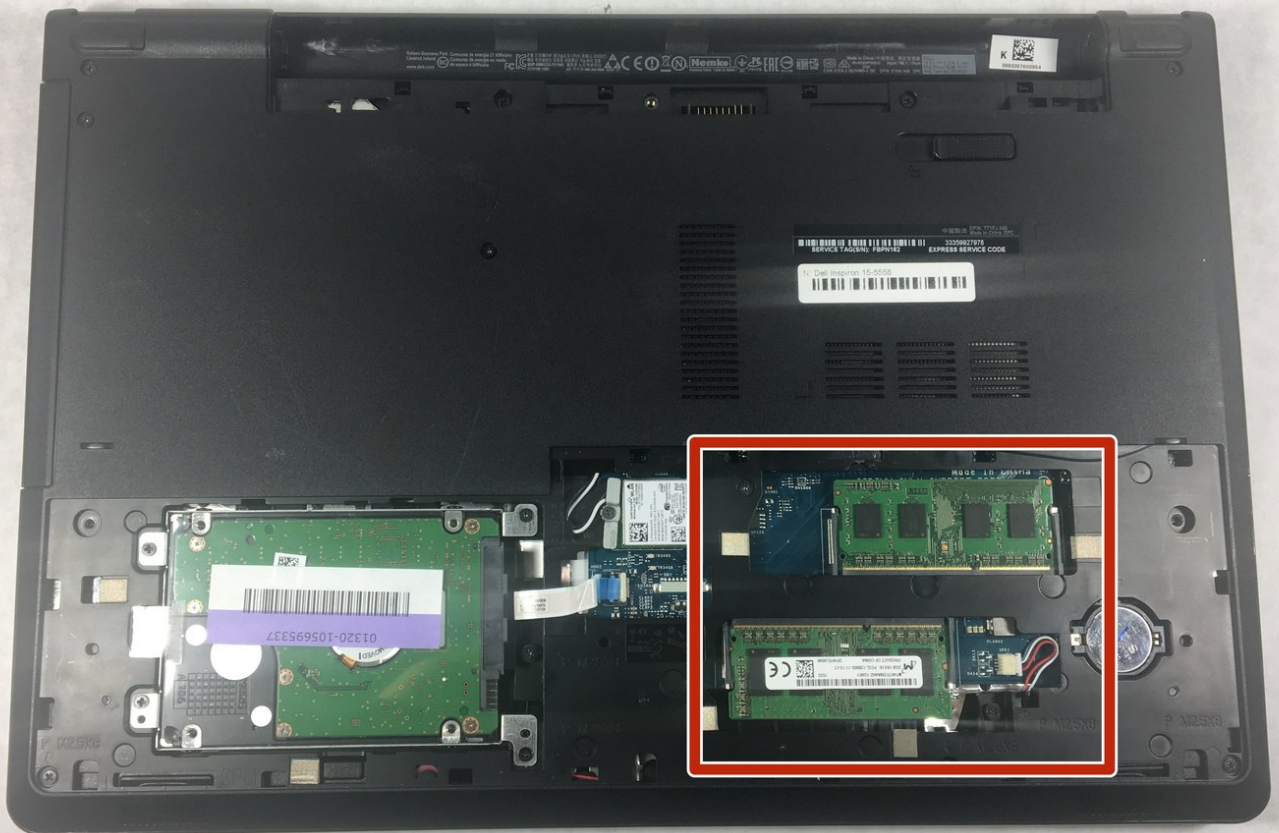




Dell Inspiron 15-5558 RAM Replacement

If your files are corrupted or you see the blue...

Written By: Adam Lourenco



INTRODUCTION

If your files are corrupted or you see the blue screen of death you might have a faulty RAM. The RAM is an acronym for Random Access Memory which is where data currently in use are kept. This guide will show you how to replace a faulty RAM.



TOOLS:

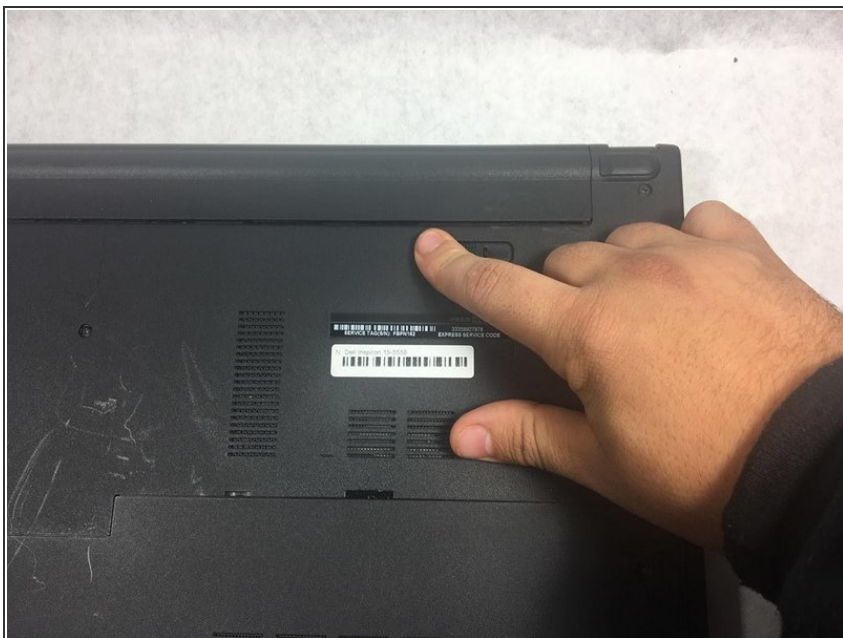
- [Spudger](#) (1)
 - [Phillips #0 Screwdriver](#) (1)
-

Step 1 — Battery



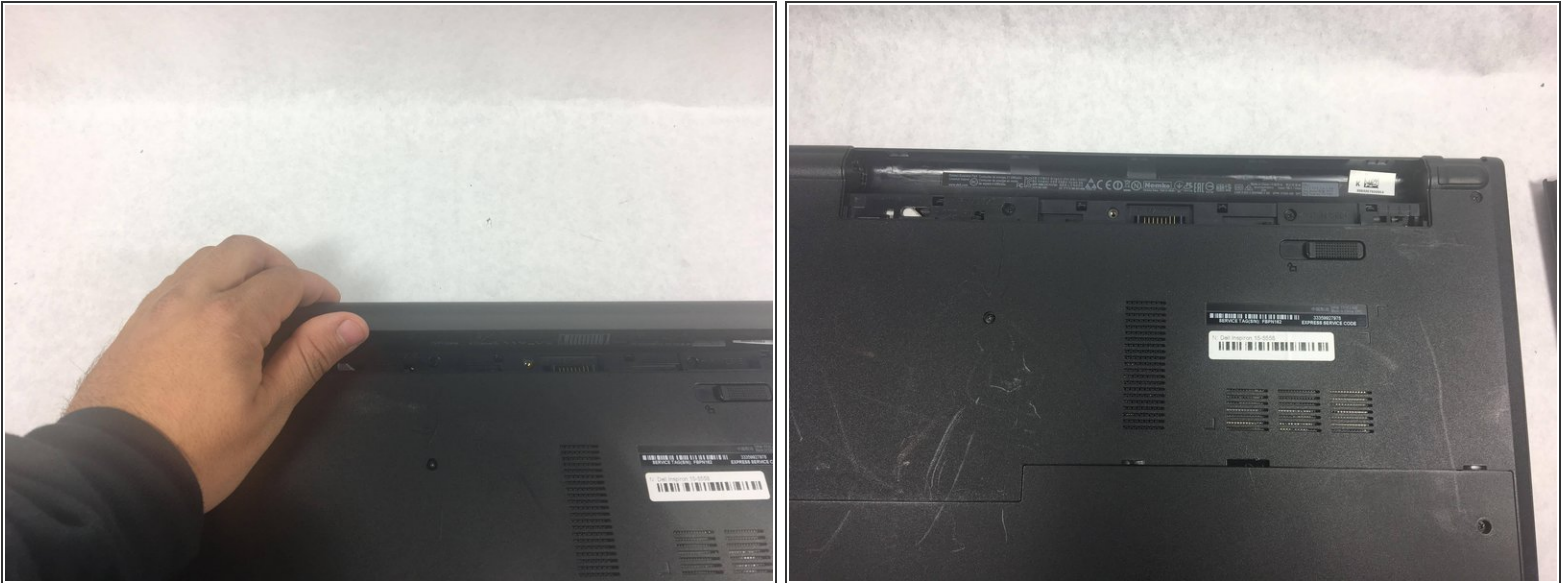
- **i** Make sure you turn off the device before starting.
- Flip the device over and so the white bar code is on the right.

Step 2



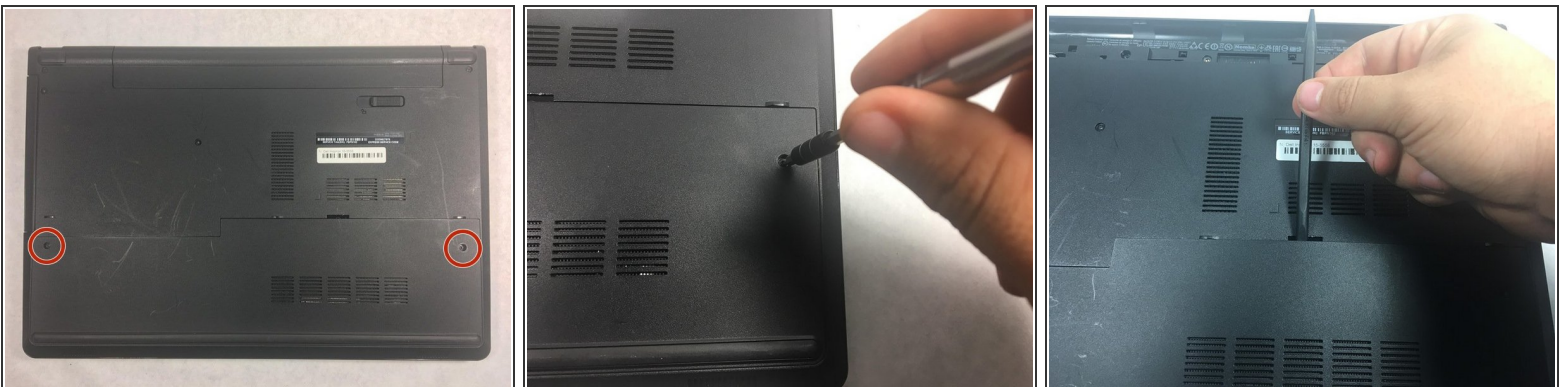
- Slide the battery latch all the way to the left until you hear the click and see the battery prop up.

Step 3



- Rotate the battery up and remove it.

Step 4 — Hard Drive



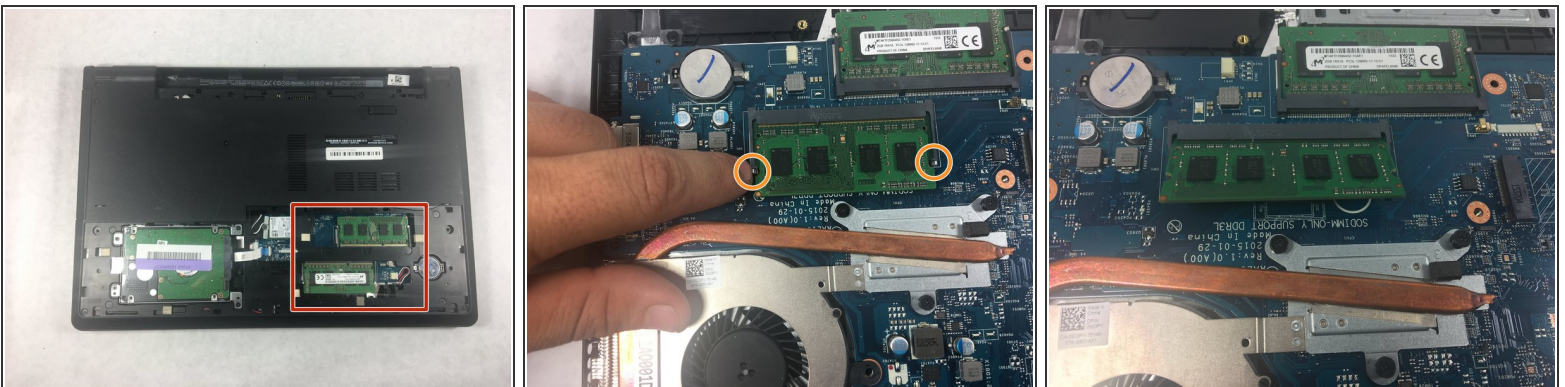
- Using a Phillips #0 screwdriver, unscrew the two 8mm screws from the panel.
- Take a spudger and wedge it between the panel and the base of the device.
- Push down on the spudger until you hear a click sound.
- Slide the spudger along the panel and continue to push down until the panel is completely detached.
- Remove the panel.

Step 5



- Using the Phillips #0 screwdriver, remove the four 8mm screws holding down the hard drive.
- Take the spudger and prop up the connector so it is no longer attached.
- Use the spudger and prop up the hard drive and remove it.

Step 6 — RAM



- Locate the two RAM cards.
- Using your finger, pull the two small pins back from the RAM causing it to pop up.

Step 7



- Once popped up, pull the ram out.

To reassemble your device, follow these instructions in reverse order.