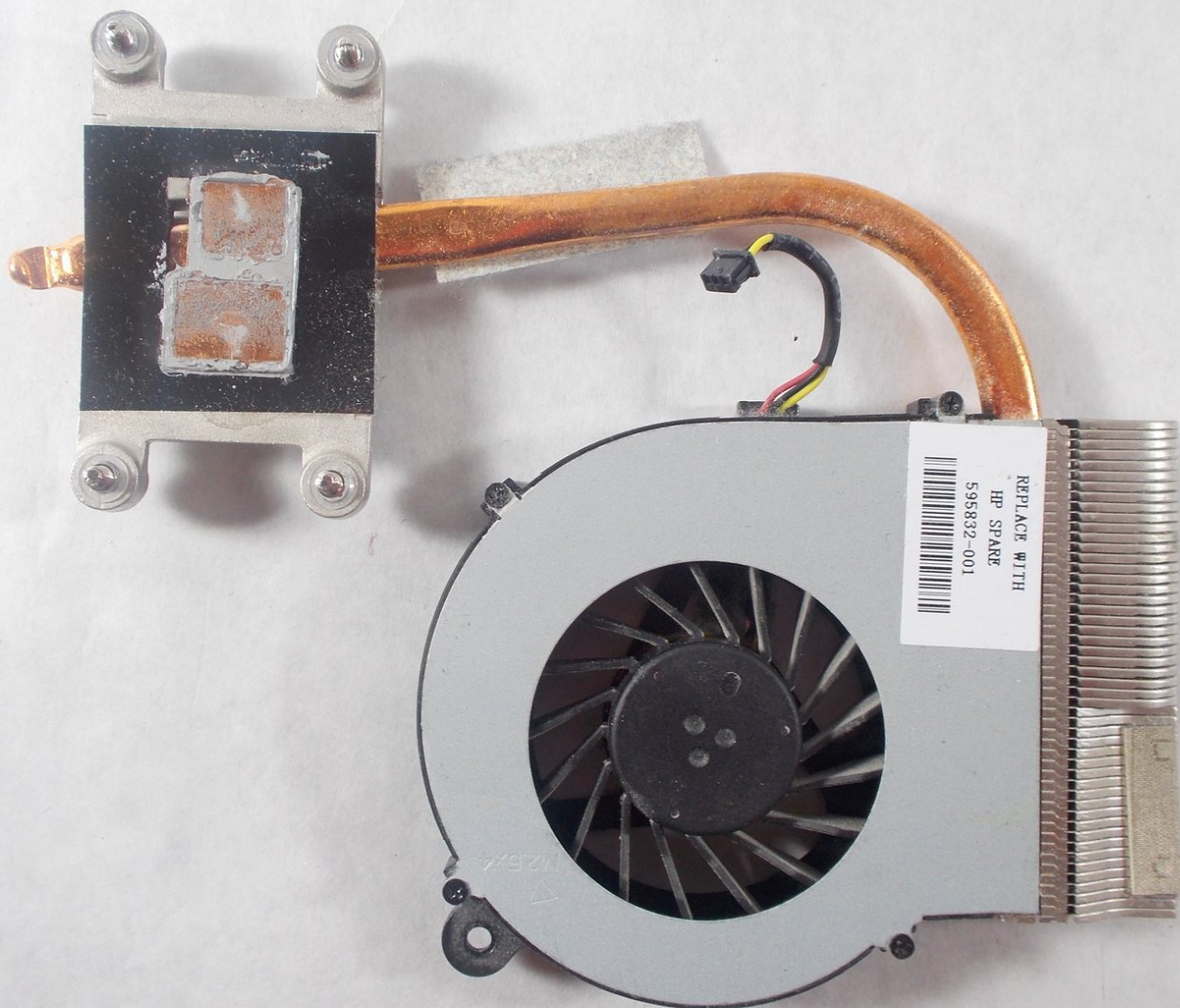




HP G62-144DX Fan/heat Sink module Replacement

This guide will show you how to replace the fan/heat Sink module on HP G62-144DX.

Written By: Tom Pawlik



INTRODUCTION

This guide shows a step-by-step procedure of replacing the Fan/heat Sink.



TOOLS:

- [iFixit Opening Tools](#) (1)
 - [Phillips #1 Screwdriver](#) (1)
 - [Metal Spudger](#) (1)
 - [Phillips #0 Screwdriver](#) (1)
-

Step 1 — Battery



⚠ Make sure to turn off the laptop before removing the battery.

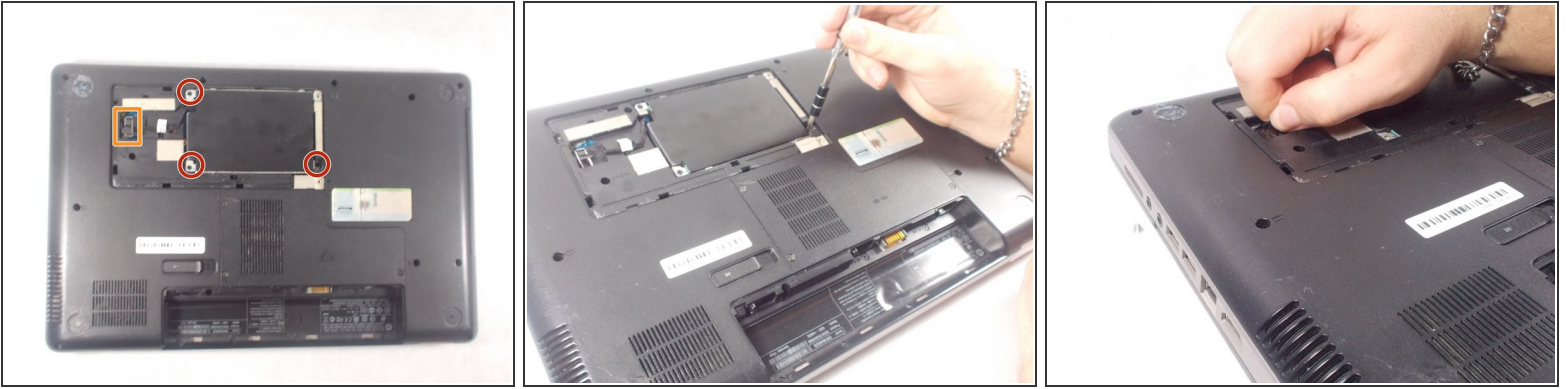
- Slide the lock to the right, located slightly above the battery location.
- While pulling the lock, pull the battery out, keeping it flat and parallel to the laptop so that it slides out easily.

Step 2 — Hard Drive



- Loosen the 2 Phillips 2.5x6 screws in the rectangular panel with a Phillips #1 screwdriver.
- ⓘ The screws will stay in the panel, but come free from the body of the computer.
- Gently remove the panel with a plastic opening tool.

Step 3



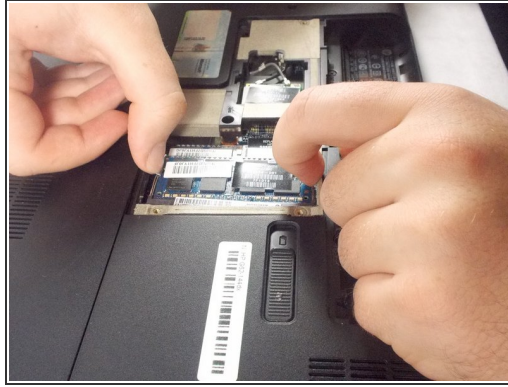
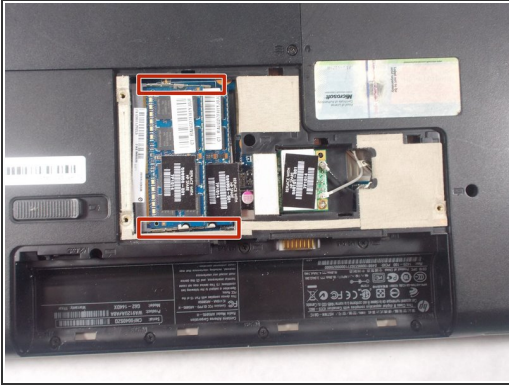
- Unscrew the three 3x4 Phillips screws holding the hard drive in with a Phillips #1 screwdriver.
- Pull the hard drive cable out of the motherboard.
- Pull the hard drive out of the computer.

Step 4 — RAM



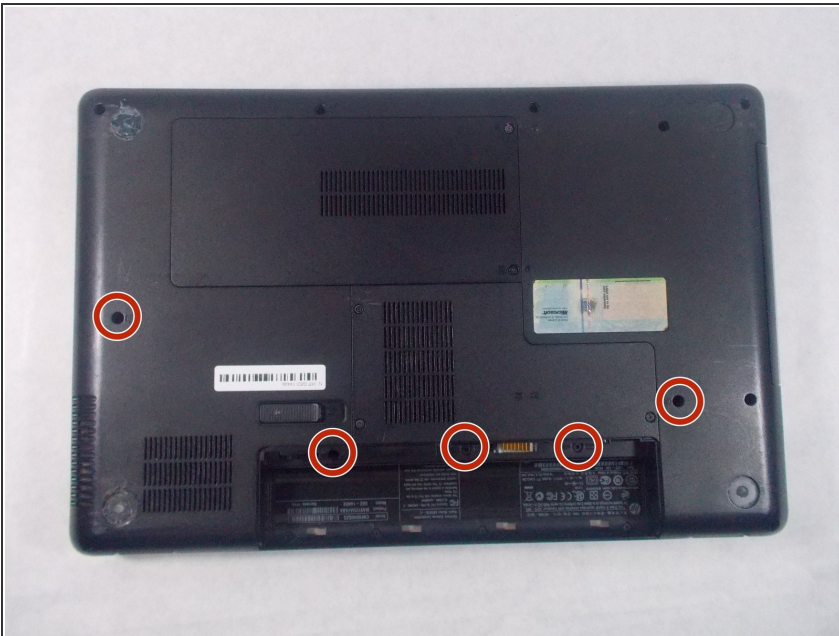
- Unscrew the three Phillips 2.5x6 screws in the L-shaped panel on the back with a Phillips #1 screwdriver.
- ⓘ The screws will stay in the panel, but will come loose from the body of the laptop.
- Use a plastic opening tool to gently pry the panel free from the laptop.

Step 5



- Pull the two metal clips to the top RAM module outwards parallel to the laptop.
- After the RAM module pops up, gently pull it out from the computer.
- Repeat for the second RAM module.

Step 6 — Keyboard



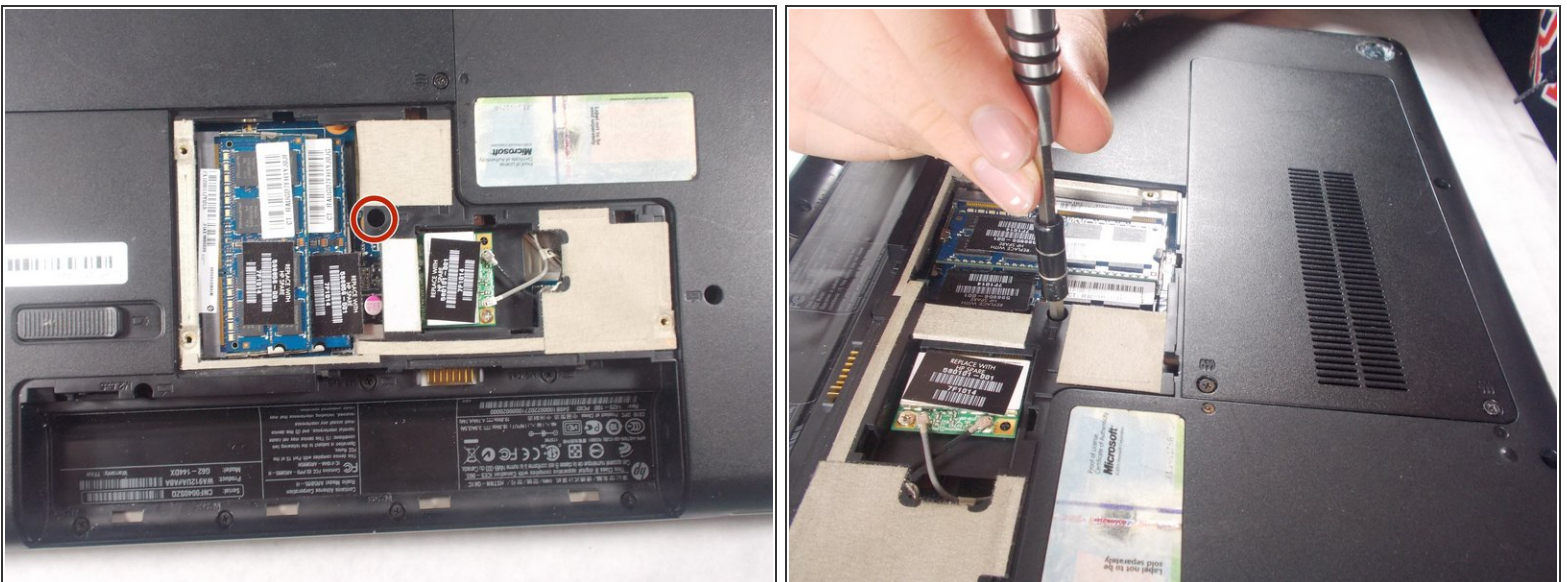
- Remove the 3 Phillips 2.5x5 screws (closest to the battery slot) and the 2 Phillips 2.5x6.5 screws with a Phillips #1 screwdriver.
- ⓘ This screws will have a keyboard symbol inscribed next to them.

Step 7



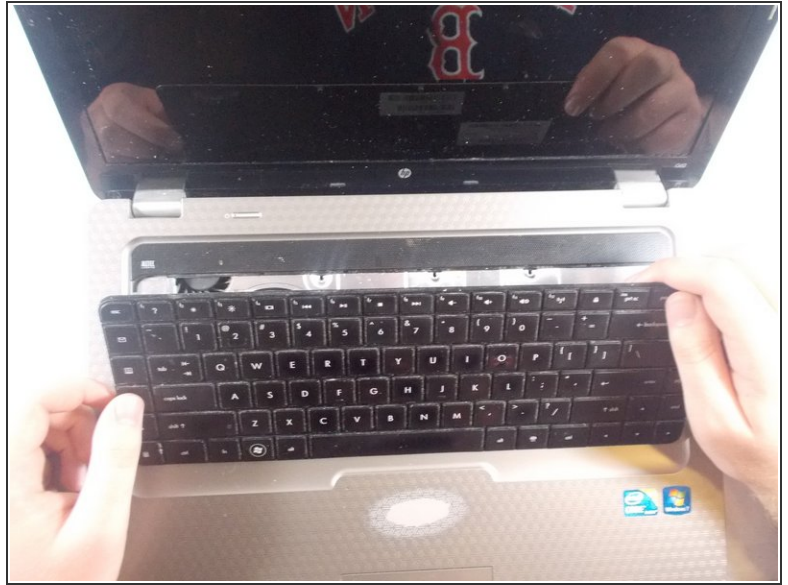
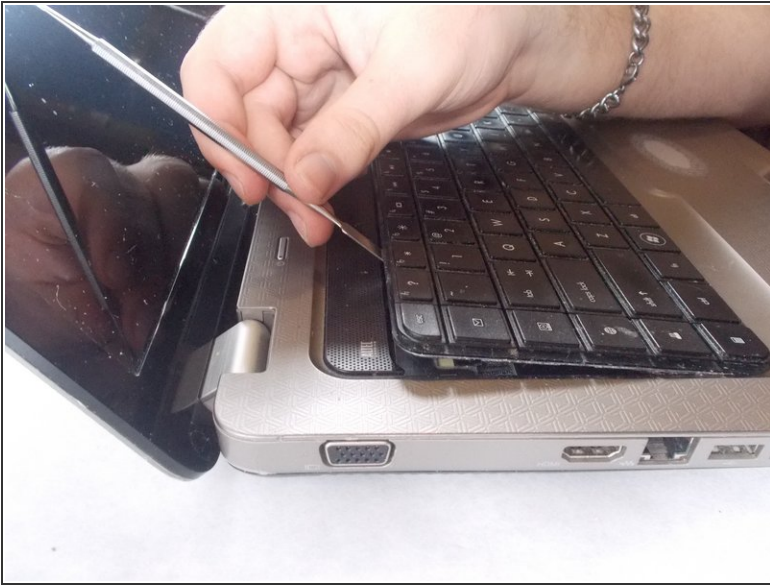
- Use the Phillips # 1 screwdriver to unscrew the 2.5x6 Phillips screws holding the L-shaped back panel.
- ⓘ Screws should stay in panel, but come free of the laptop body.
- Gently use a plastic opening tool to remove the panel.

Step 8



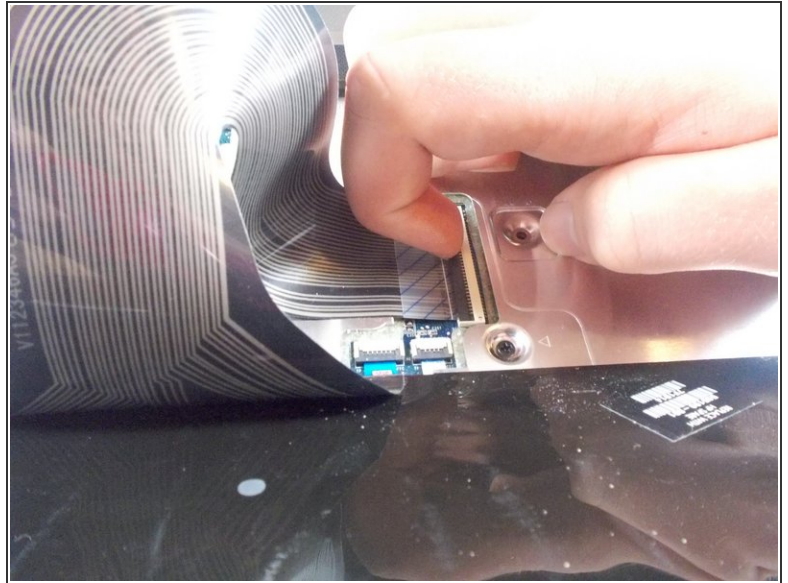
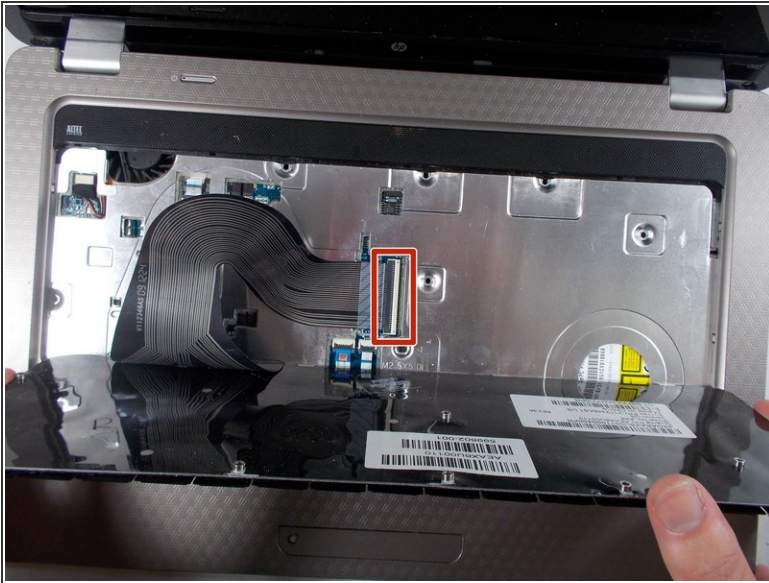
- Unscrew the final Phillips 2.5x5 keyboard screw with a Phillips #1 screwdriver.

Step 9



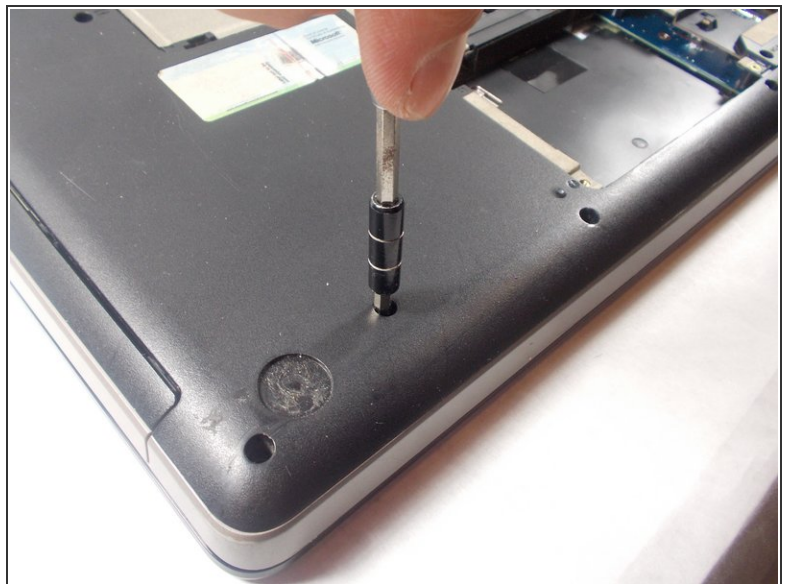
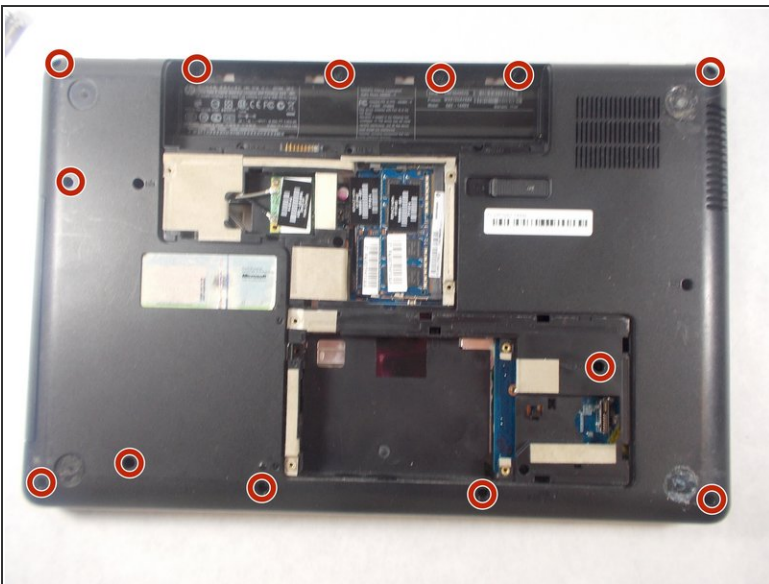
- Flip the laptop so the top is facing up again and open the cover.
- Use a metal spudger to pry the keyboard up and pull it back.
- ⓘ Be sure to pry up the board itself and not an individual key.
- ⚠ This process has the risk of breaking keys.

Step 10



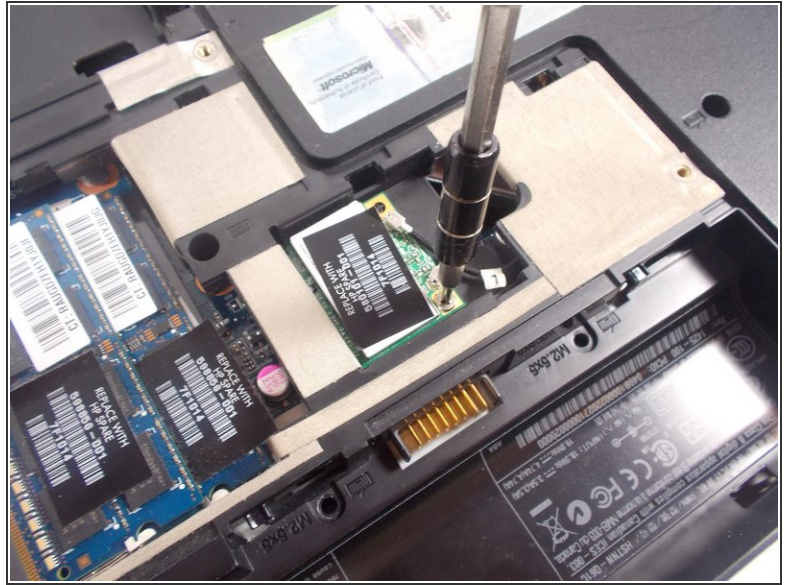
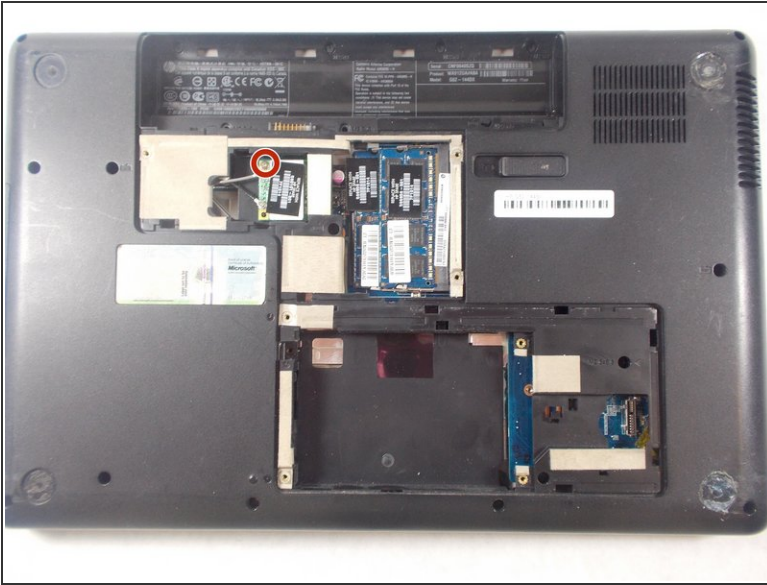
- Pull up the latch that connects the keyboard connector to the motherboard.

Step 11 — Motherboard



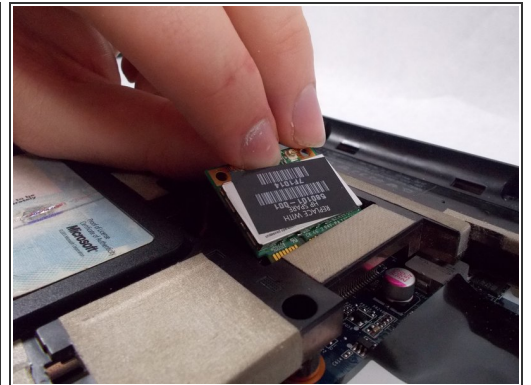
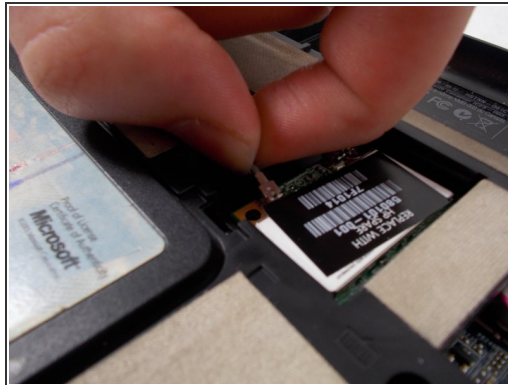
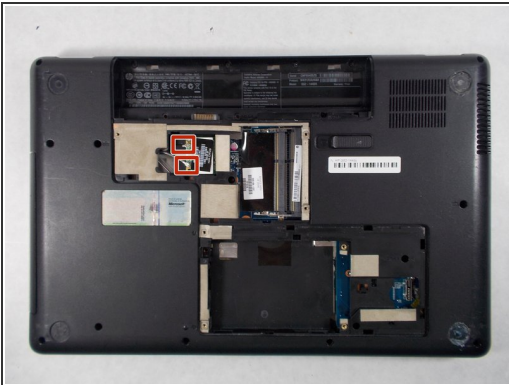
- Remove four Phillips PM2.5x3 screws in the battery bay, and remove ten Phillips PM2.5x6.5 screws on the base enclosure with a Phillips #1 screwdriver.

Step 12



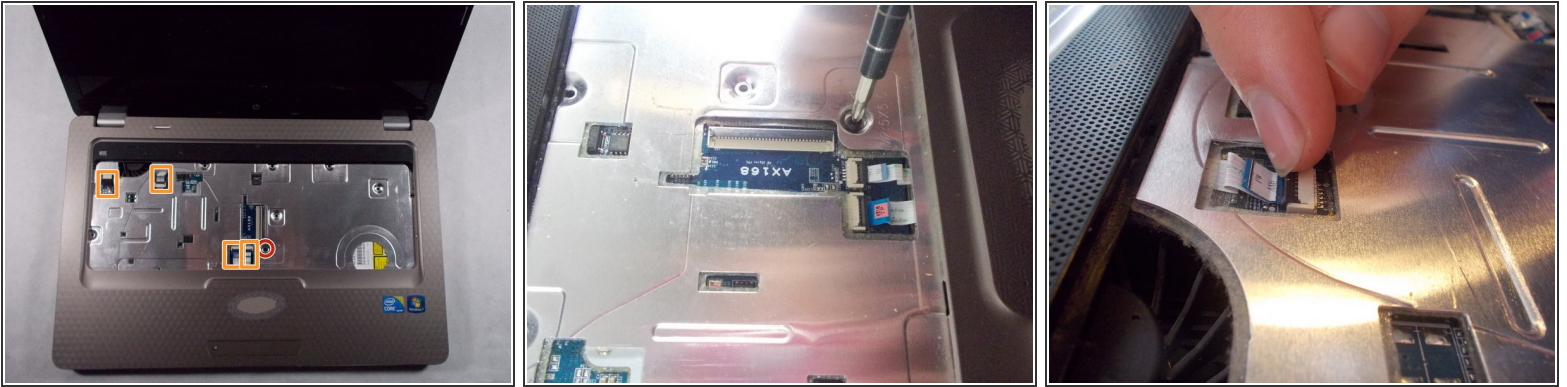
- Remove the Phillips PM2.0×3.0 screw that secures the WLAN module to the computer with a Phillips #0 screwdriver.

Step 13



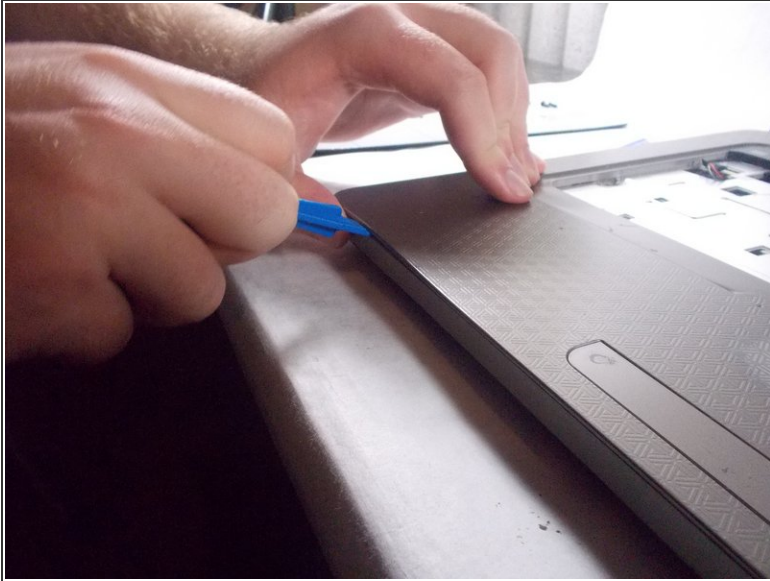
- Disconnect the two wires that attach the card to the motherboard by pulling them up individually.
- Grab the card gently and pull it out after it pops up.

Step 14



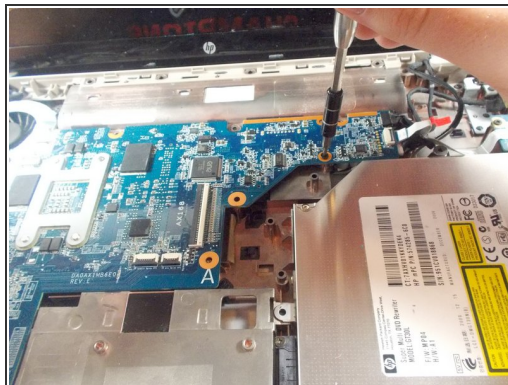
- Flip the laptop over so that the top is facing upwards.
- Remove the Phillips PM2.5×6.0 screw that secures the top cover to the computer with a Phillips #1 screwdriver.
- Disconnect the 4 connectors to the motherboard.

Step 15



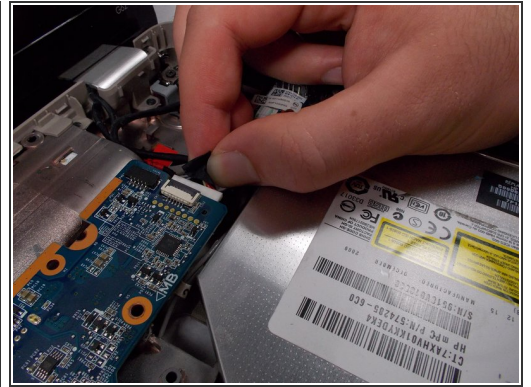
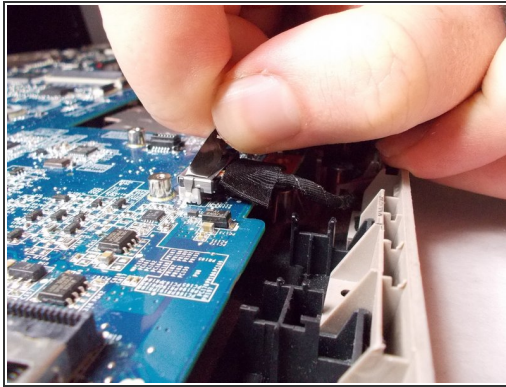
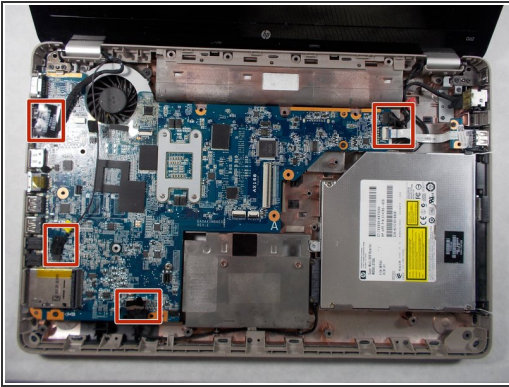
- Take off the cover by prying open the cover with a plastic opening tool.
- Lift the edge near the display first until it pops out, and then remove the cover by pulling it out.
- ⓘ The cover should come out with ease. If you having trouble pulling the cover out you should double check to see if any screws were left unscrew.

Step 16



- Remove the two motherboard screws and the fan screw that holds it on the the rest of the computer with a Phillips #1 screwdriver.

Step 17



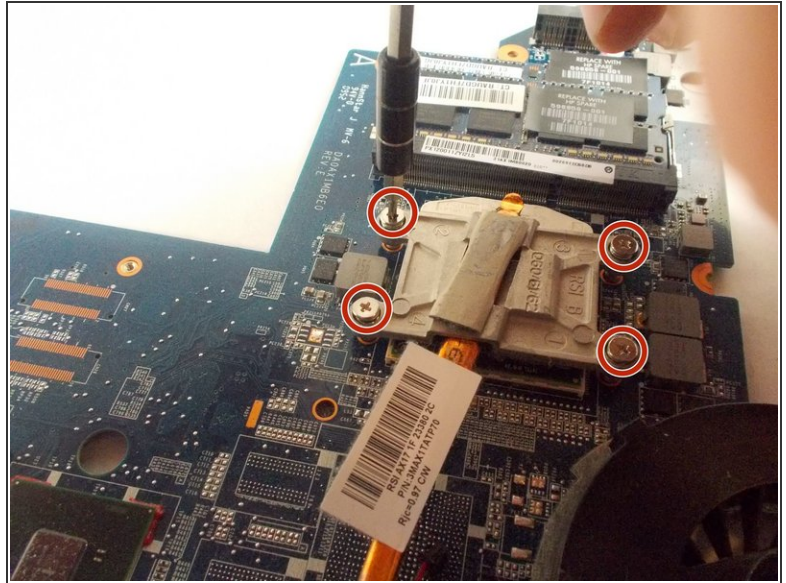
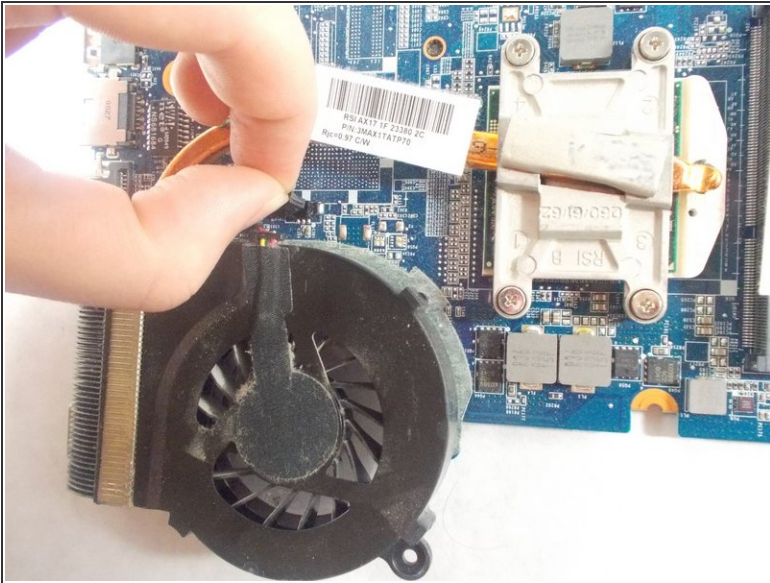
- Remove the six connectors from the motherboard.
- ⓘ The power connector is located underneath the USB connector.

Step 18



- Lift up the right side of the motherboard and pull it out to the right carefully.

Step 19 — Fan/heat Sink module



- i** Shut down the computer. If you are unsure whether the computer is off or in Hibernation, turn on the computer, and then shut it down through the operating system.
- i** Disconnect all external devices connected to the computer.
- i** Disconnect the power from the computer by first disconnecting the power cord from the AC outlet and then disconnecting the AC adapter from the computer.
 - Disconnect the fan cable from the system board.
 - Loosen the four Phillips PM2.5×7.0 captive screws that secure the fan/heat sink assembly to the system board with a Phillips 0 screwdriver.

To reassemble your device, follow these instructions in reverse order.