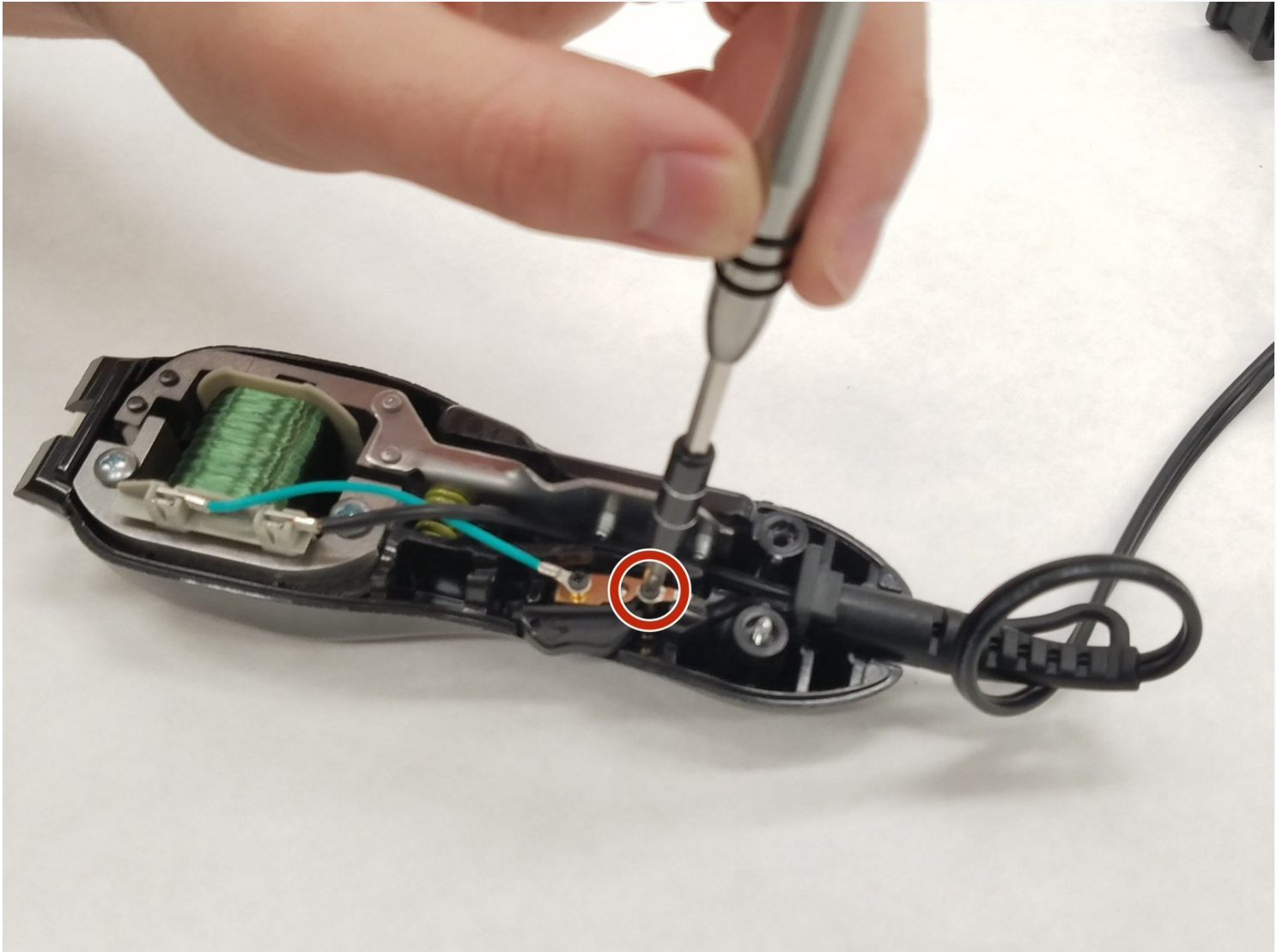




Wahl Chrome Pro Power Cord Replacement

The power cord connects the clipper to a power...

Written By: Manuel Salazar M.



INTRODUCTION

The power cord connects the clipper to a power supply. If the power cord wiring breaks due to repeated bending, the power cord may need replacement. Replacing a broken power cord makes sure the clippers receive the power needed to run the device.

TOOLS:

Phillips #2 Screwdriver (1)

Spudger (1)


Tweezers (1)

Phillips #1 Screwdriver (1)

Step 1 — Case



- Remove the two 5.0 mm JIS #1 screws to loosen the cutting blades.

 Make sure your device is not connected to power before you begin.

Step 2



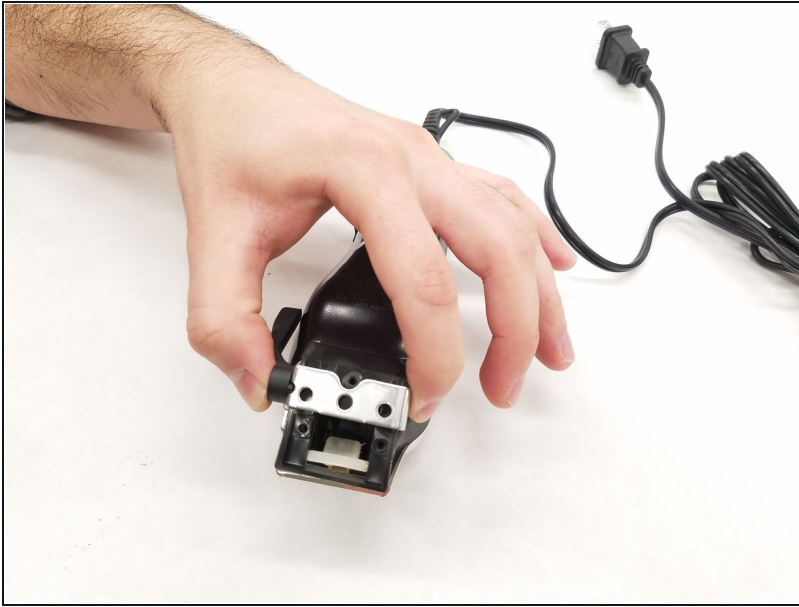
- Lift the bottom blade straight up from the device body to remove it.

Step 3



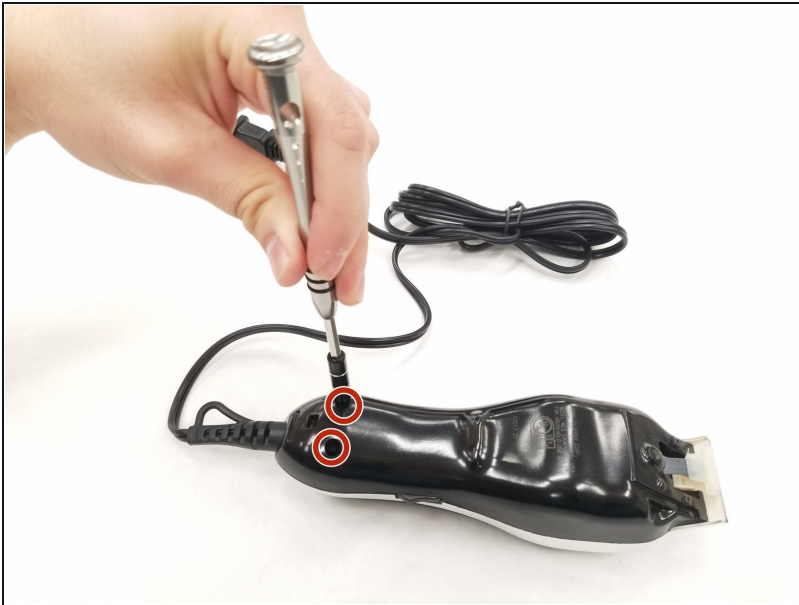
- Remove the three 9.0 mm JIS #1 screws attaching the base of the blade assembly to the body.

Step 4



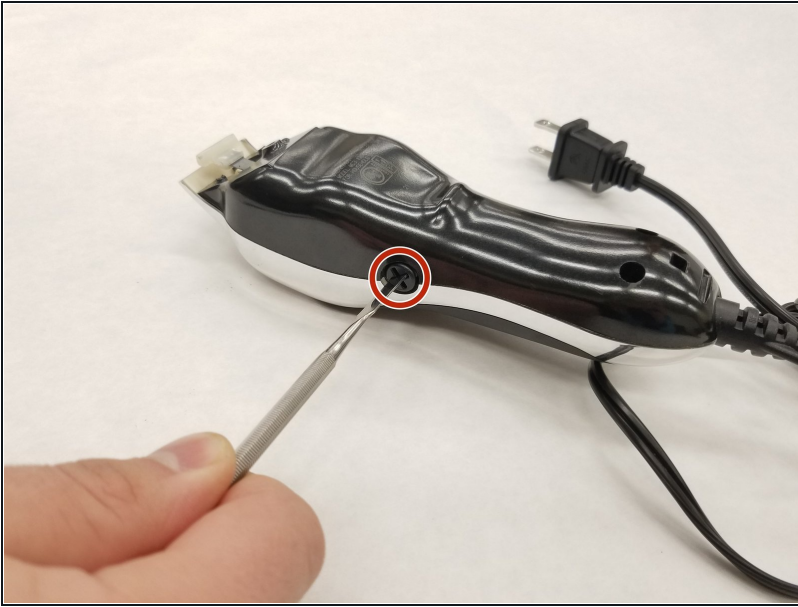
- Lift the base of blade assembly straight up off of the body.

Step 5



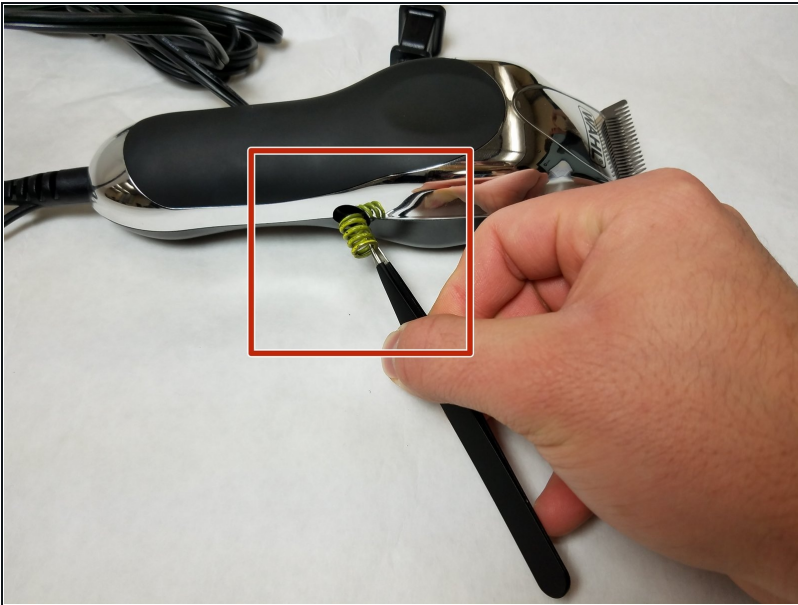
- Remove the two 12.0 mm JIS #1 screws on the back of the device body.

Step 6



- Remove the 13.0 mm Phillips #2 screw on the side of the device body.
- This screw is located on the opposite side of the body from the switch.

Step 7



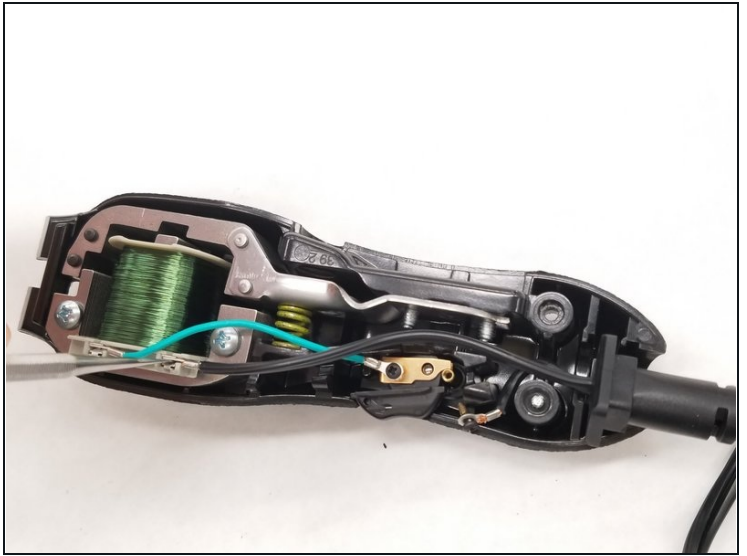
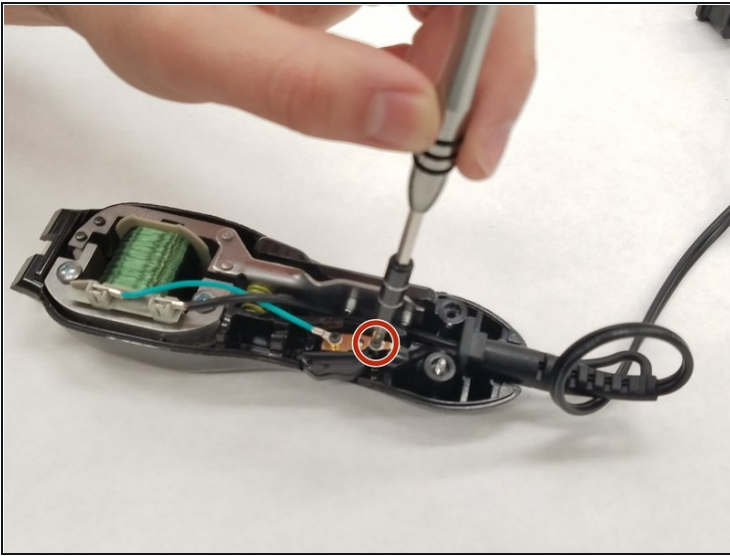
- Remove the spring on the side of the body using [tweezers](#).

Step 8



- Pry the body case off of the device using a spudger.

Step 9 — Power Cord



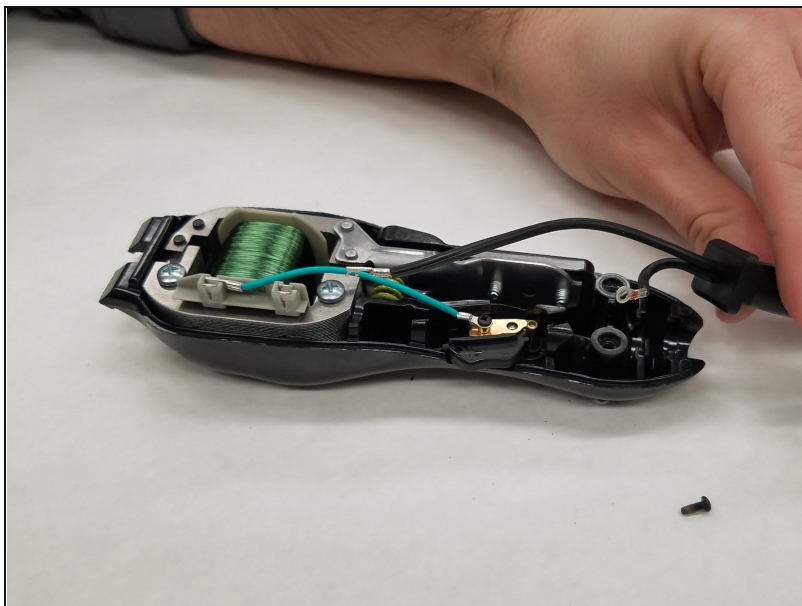
- Remove one 7.5 mm JIS #1 screw from the switch base.

Step 10



- Unplug the cord terminal from the motor connector.

Step 11



- Remove the cord from the device base by pulling gently.

To reassemble your device, follow these instructions in reverse order.