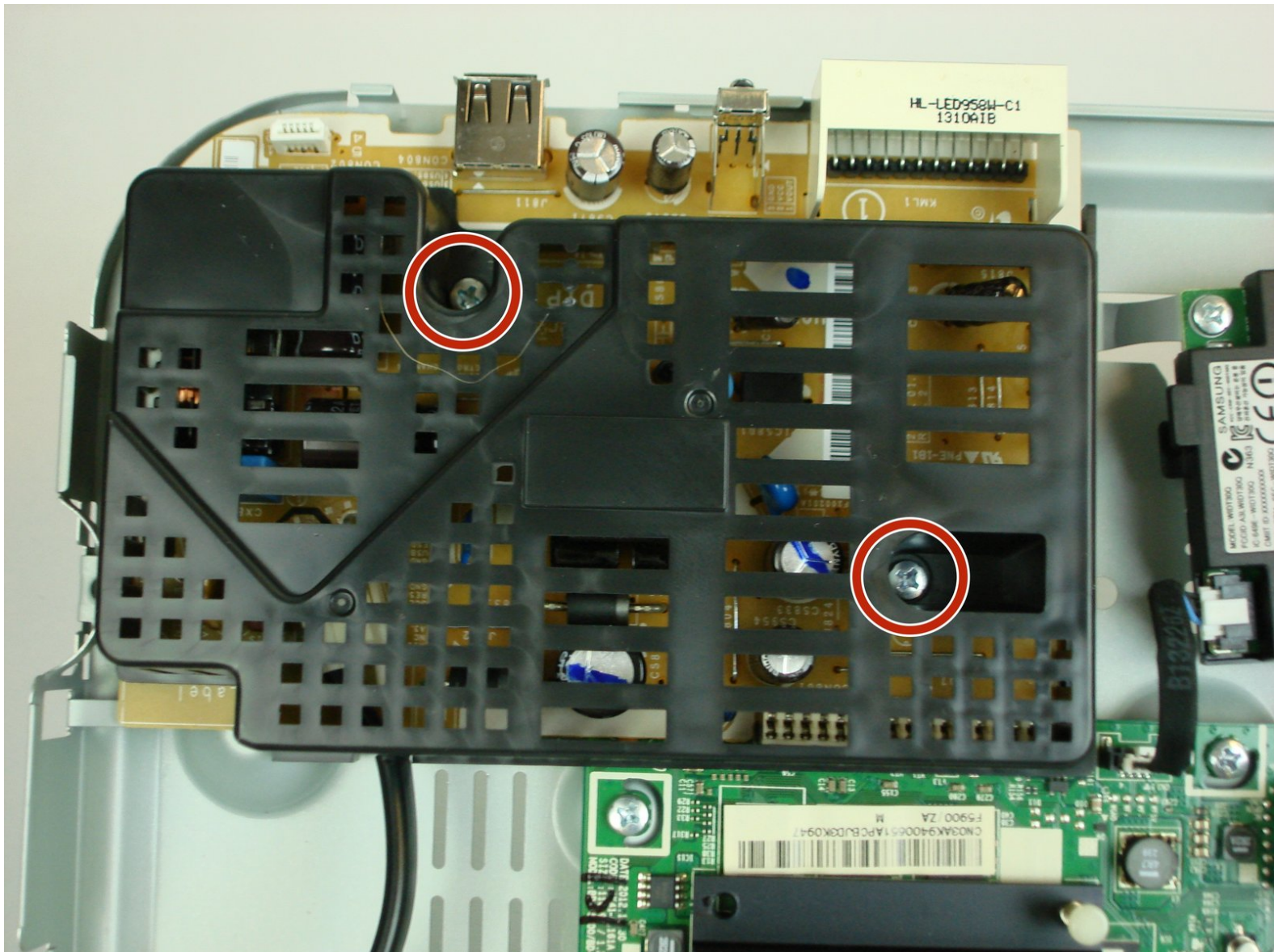




Samsung BD-F5900 Power Supply Replacement

This guide explains how to replace the power supply on the Samsung BD-F5900 Blu-ray player

Written By: Louis McKean



INTRODUCTION

If you device will not turn on, it may be due to a defective power supply. If there are issues with the power supply on the device, this guide is here to demonstrate how to replace it.



TOOLS:

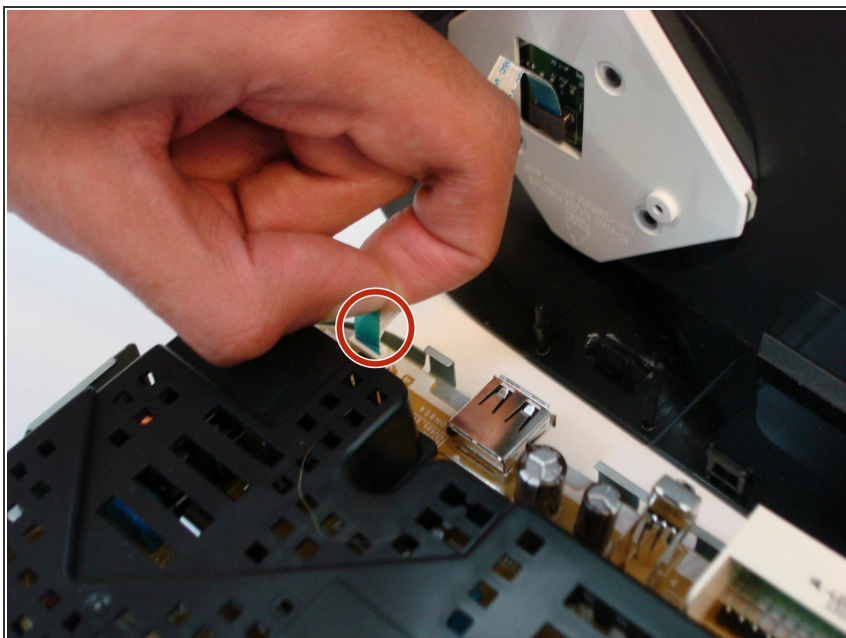
- [Phillips #1 Screwdriver](#) (1)
-

Step 1 — Top Cover



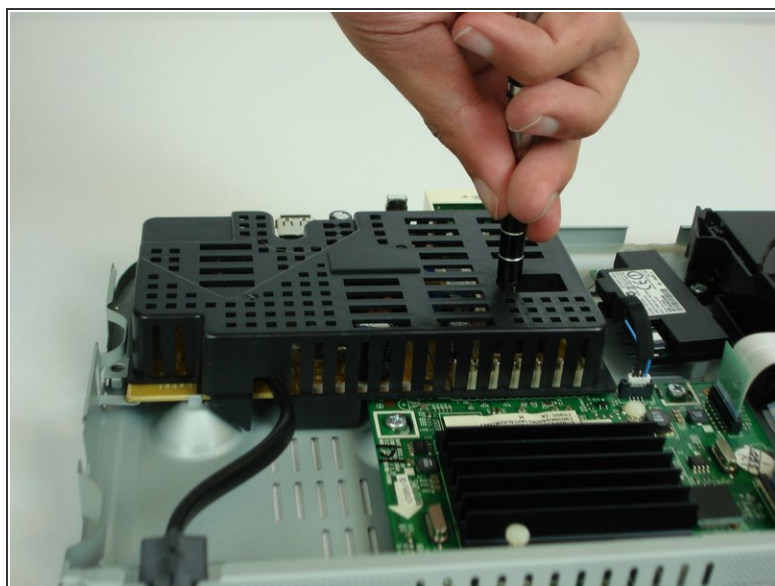
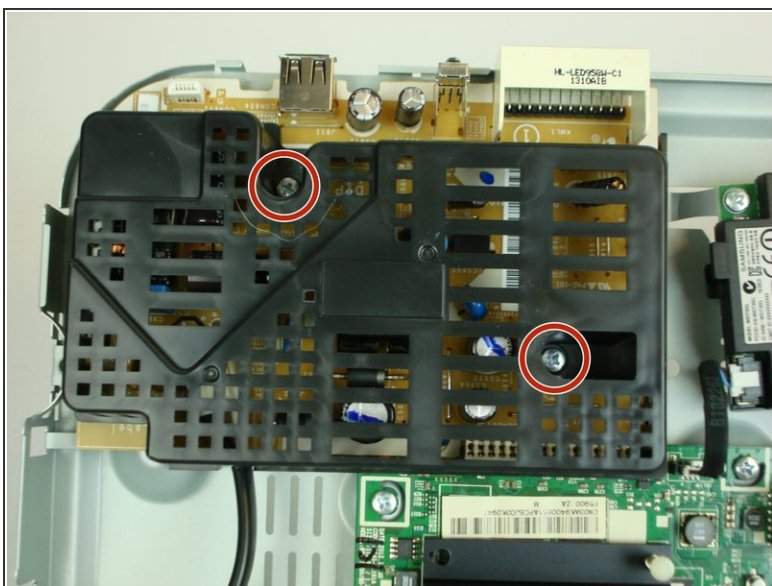
- Using a #1 Phillips head screwdriver, remove the three 10mm screws on the back panel.
- Tilt the back of the top cover forward to remove from chassis.

Step 2



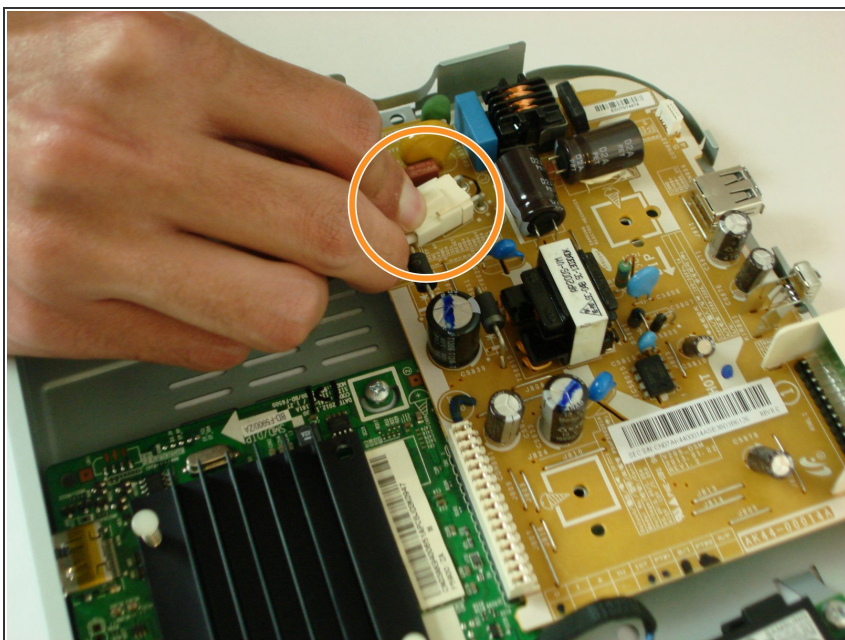
- Gently pull up on the ribbon cable by the blue tab to remove it from the power supply board.

Step 3 — Power Supply



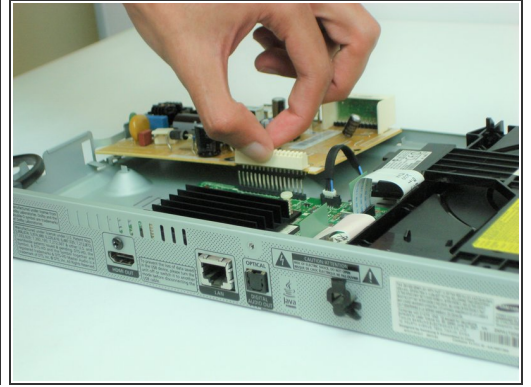
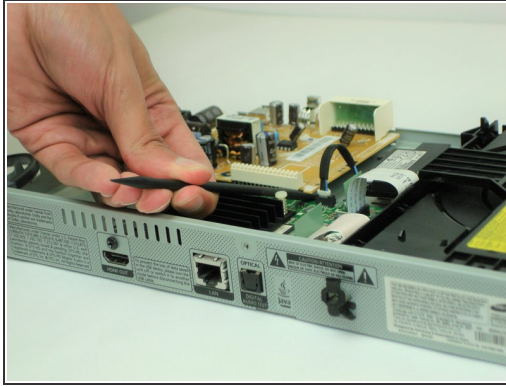
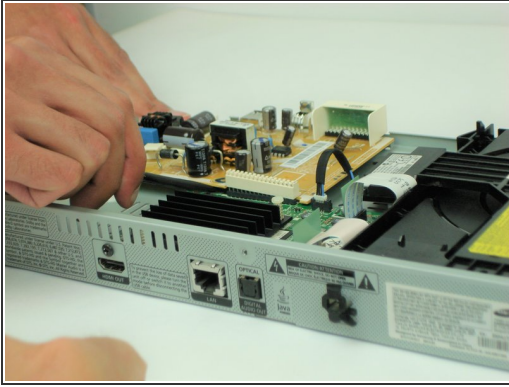
- Using a #1 Phillips head screwdriver, remove the two 7.5mm screws on top of the plastic cover and remove the cover.

Step 4



- Press down on the plastic retaining clip and pull backwards to remove the AC power connector from the power supply board.

Step 5



- Using the plastic spudger tool, gently pry on either side of main power connector (CON801) to disconnect from main logic board.
- ⓘ Pry a little bit on each side of board until the board lifts away.
- Tilt the board forward and lift up to remove from the chassis.

To reassemble your device, follow these instructions in reverse order.