



# Gateway MS2370 Screen Replacement

This guide shows the user how to properly...

Written By: Mathieu Bolduc-Clayton



# INTRODUCTION

This guide shows the user how to properly remove the screen from the Gateway MS2370 Laptop.

---

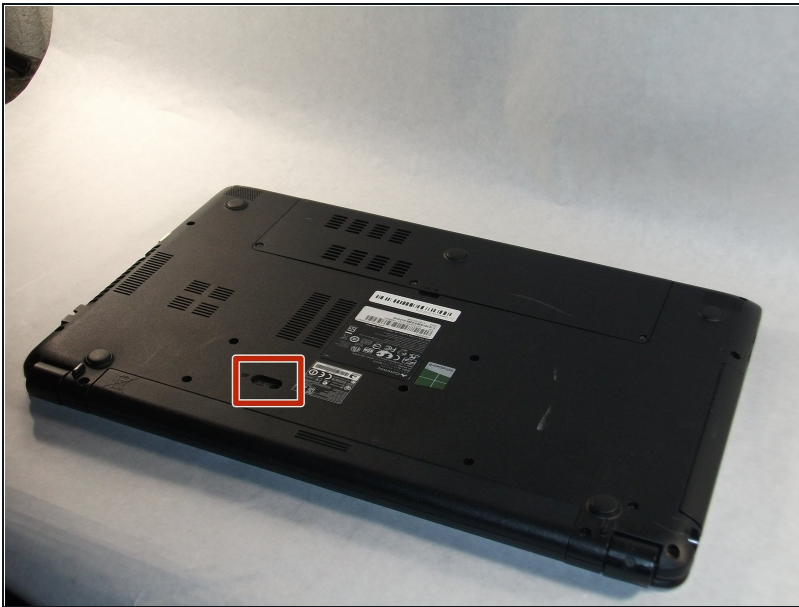
## TOOLS:

Spudger (1)

64 Bit Driver Kit (1)

---

## Step 1 — Battery



- Make sure the laptop is turned off and flipped over so that the bottom is facing up. Then, locate the battery clip as shown.

## Step 2



- Either using your fingers or a plastic spudger push the battery clip to the left to release battery.

## Step 3



- Pull the battery from the laptop to remove it.

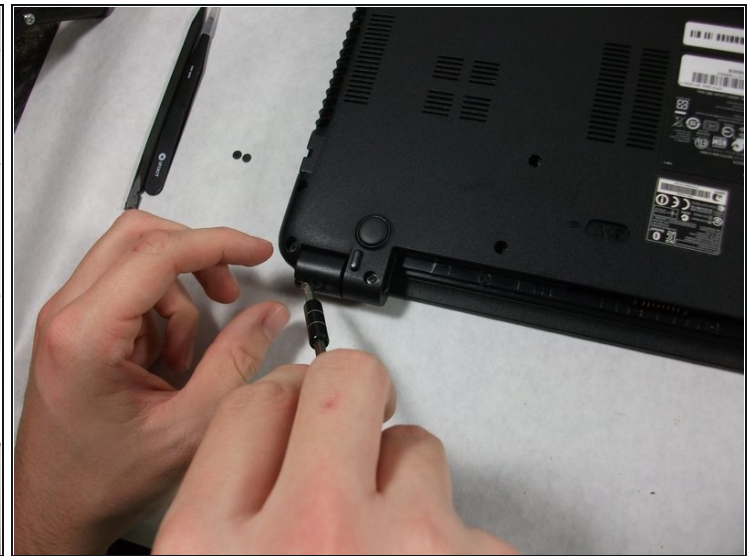


## Step 4 — Screen



- Using the pointed [tweezers](#), remove plastic circles that are stuck onto the back of the laptop's hinges.
- ❗ These plastic circles are stuck inside the hole with adhesive and might require a significant amount of force.

## Step 5



- Unscrew both of the 3mm Phillips 01 screws on both hinges using the matching screwdriver.

## Step 6



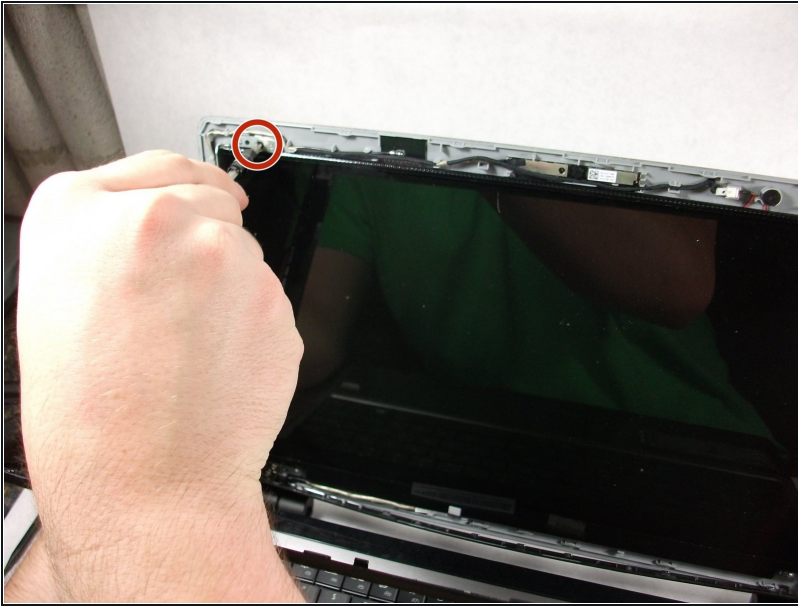
- Take the plastic spudger and pull up the tabs on all four sides of the screen molding.

## Step 7



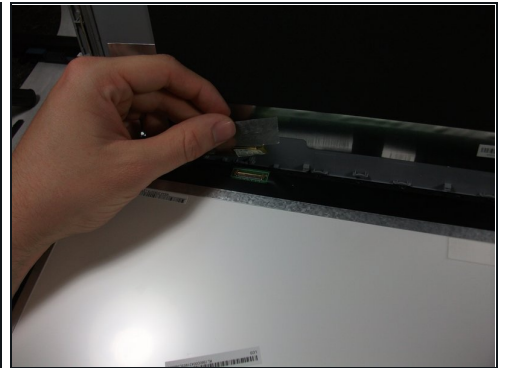
- Carefully remove the screen molding. Be aware that the screen molding will not come out all the way.

## Step 8



- Unscrew the four 3mm inch Phillips 01 screws on the screen bracket.

## Step 9



- Peel up the tape over the connector and unplug the screen from the laptop.



## Step 10



- Slowly remove the screen from the laptop.

---

To reassemble your device, follow these instructions in reverse order.