



Conair Infiniti PRO Curling Iron Housing Replacement

This guide is prerequisite only.

Written By: Jonathon Bruer



INTRODUCTION

This guide will show how to remove the housing from the curling iron. This step is useful in most of the other replacement guides for this device.

TOOLS:

- [Phillips #1 Screwdriver](#) (1)
 - [Spudger](#) (1)
-

Step 1 — Housing



- Remove the Philips #1 28 mm.

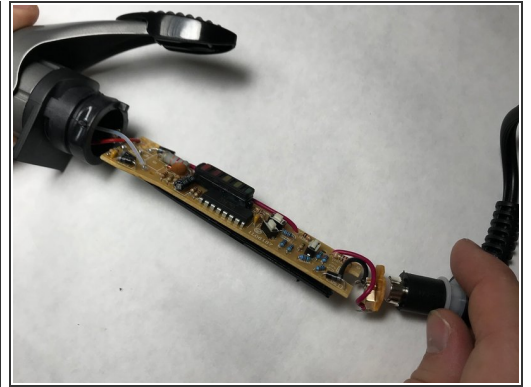
⚠ Make sure device is unplugged and cool before attempting to replace parts.

Step 2



- Remove the Philips #1 22 mm screws.

Step 3



- Pry off the housing using a plastic spudger.

To reassemble your device, follow these instructions in reverse order.