



MSI GS63VR 6RF Stealth Pro RAM or NVMe Replacement

Replacing RAM or NVMe in the Stealth Pro. In order to do this, you'll have to remove some other parts that get in the way.

Written By: Zachery Friedman



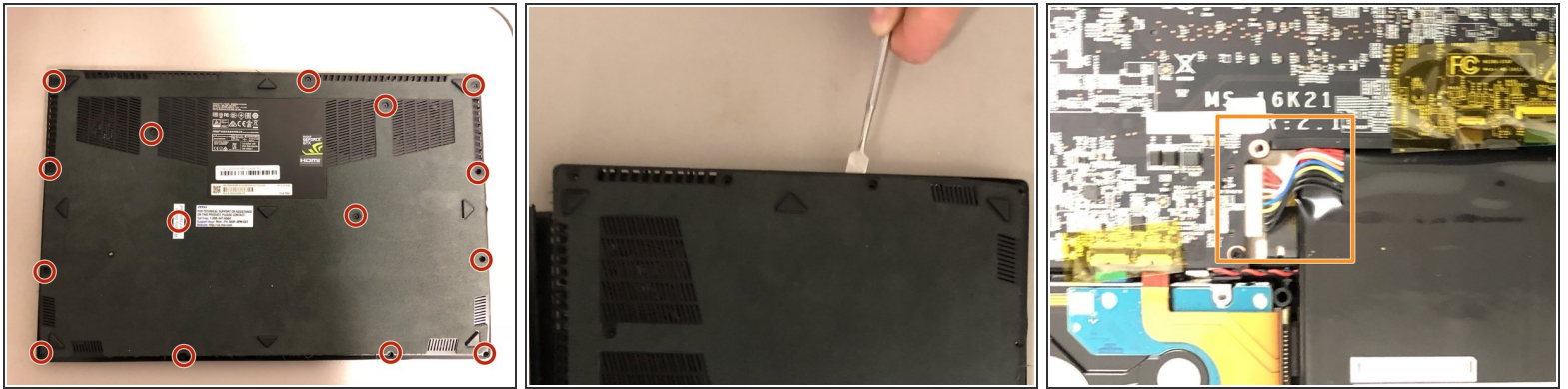
INTRODUCTION

Replacing RAM or NVMe in the Stealth Pro. In order to replace the RAM or NVMe in the Stealth Pro, you'll have to remove some other parts that get in the way.

TOOLS:

- [Pick Tool](#) (1)
 - [iFixit Opening Tools](#) (1)
 - [Spudger](#) (1)
 - [Phillips #00 Screwdriver](#) (1)
 - [Tweezers](#) (1)
-

Step 1 — Hard Drive



Turn off the laptop before proceeding.

- Unscrew the 15 screws on the bottom panel using a Phillips #00 screwdriver.
- Pry open the back cover with a plastic prying tool.

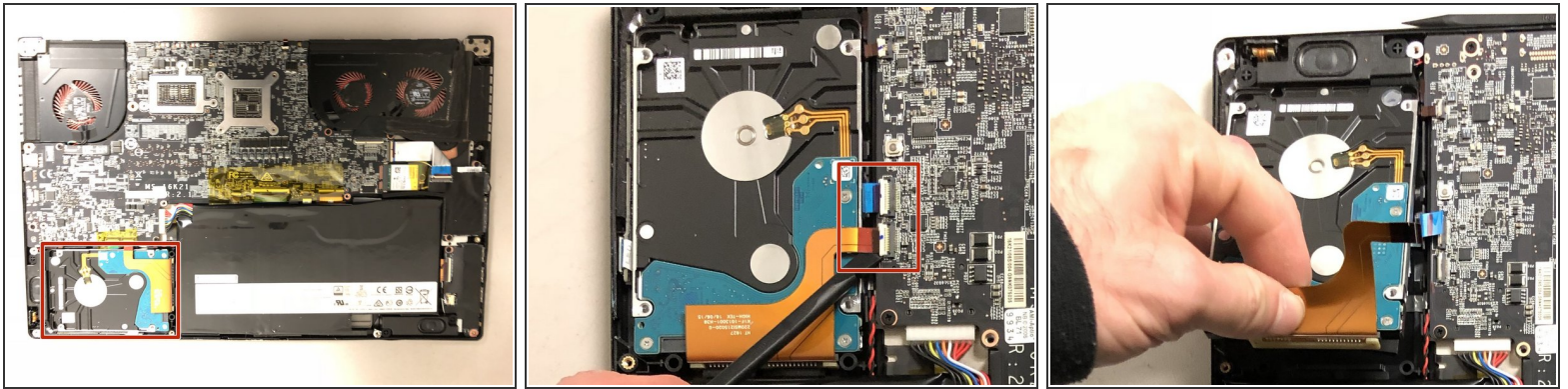


Unplug the battery cable from the motherboard to prevent a ground fault. Either use your hand or a pair of tweezers to unplug the battery cable.



Too much pressure from the spudger can break the clips that secure the back panel, but some flex is not dangerous.

Step 2



- Disconnect the SATA cables from the motherboard using a plastic spudger.
- Gently pull out the SATA cables out of the ports.
- Grab the auburn color cable and lift up the hard drive. Slide out the hard drive while holding onto the cable.

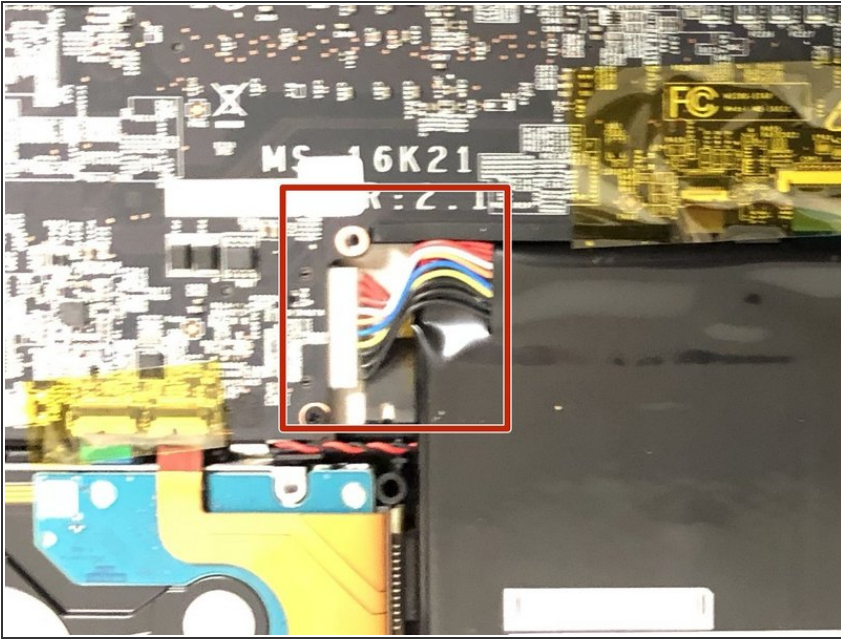
⚠ Cables are fragile. Do not apply excessive force.

Step 3 — Battery



- ⓘ Before you begin, be sure to turn off your laptop and discharge the battery down to 25%.
- Use a Phillips screwdriver to remove the 15 screws securing the back cover.
- Insert an opening tool or spudger in the seam and pry along the perimeter to loosen the back cover.
- ⚠ Do not insert the opening tool too far into the back edge (with "Stealth" written on it), or you may damage the power LED.
- ⓘ The back cover is secured with clips. Too much pressure from the spudger can break the clips, but some flex is not dangerous.
- Remove the back cover.

Step 4



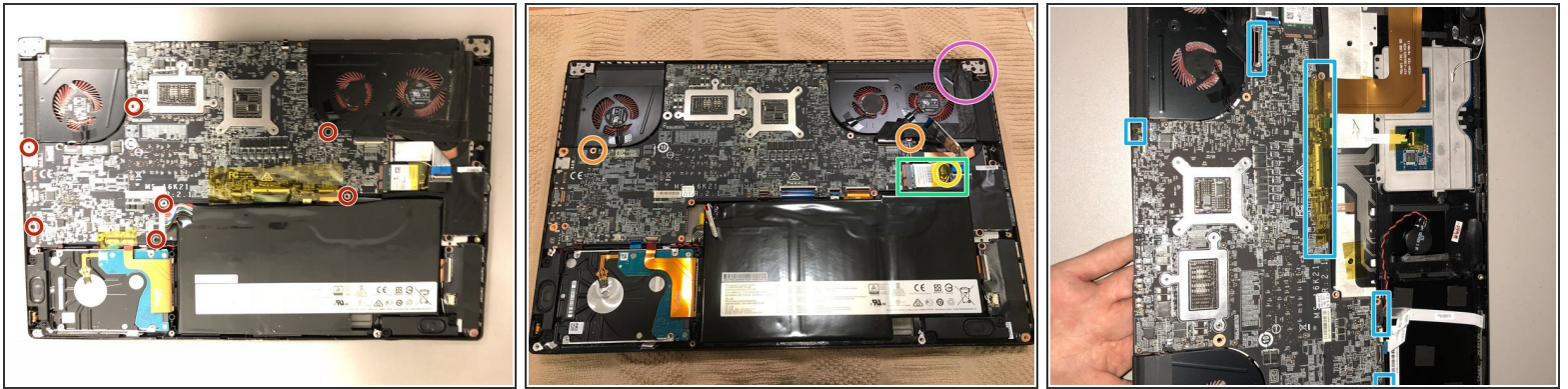
- Disconnect the battery by carefully pulling its connector towards the battery.
- ⚠ Pull parallel to the battery, not straight up.

Step 5



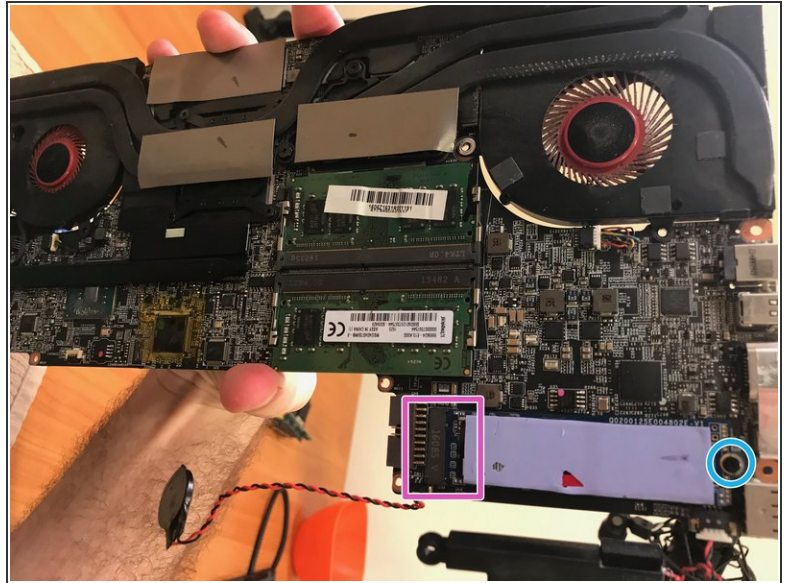
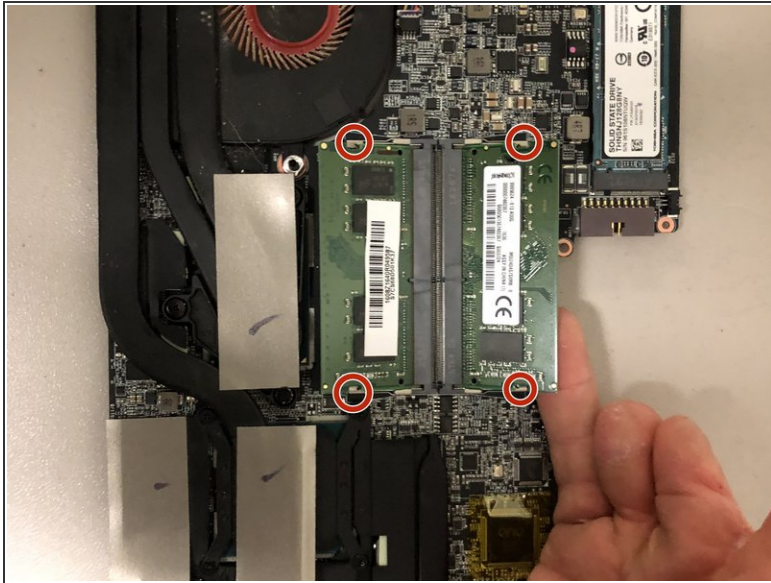
- ⓘ The battery is attached to the laptop with a strong adhesive.
- Lift the battery from laptop.
- ⚠ Be careful not to bend the or puncture the battery, as that may cause a fire hazard.

Step 6 — RAM or NVMe



- Once the battery is out, remove the screws at each standoff with a #00 Phillips screwdriver.
- Remove the two additional screws under the fans.
- Remove the screw securing the Wi-Fi card.
- Disconnect and remove the wifi card from the motherboard.
- Disconnect the additional cables connected to the motherboard.
- Carefully lift the motherboard out of the computer.
 - **The screen cable in the top left is short and restricts movement when removing the motherboard.**

Step 7



- After flipping the motherboard over, locate the RAM slots.
- Release each stick of RAM by carefully prying the metal clips away.
- Remove M2 screw securing NVME drive.
- Remove or replace NVME drive.

To reassemble your device, follow these instructions in reverse order.