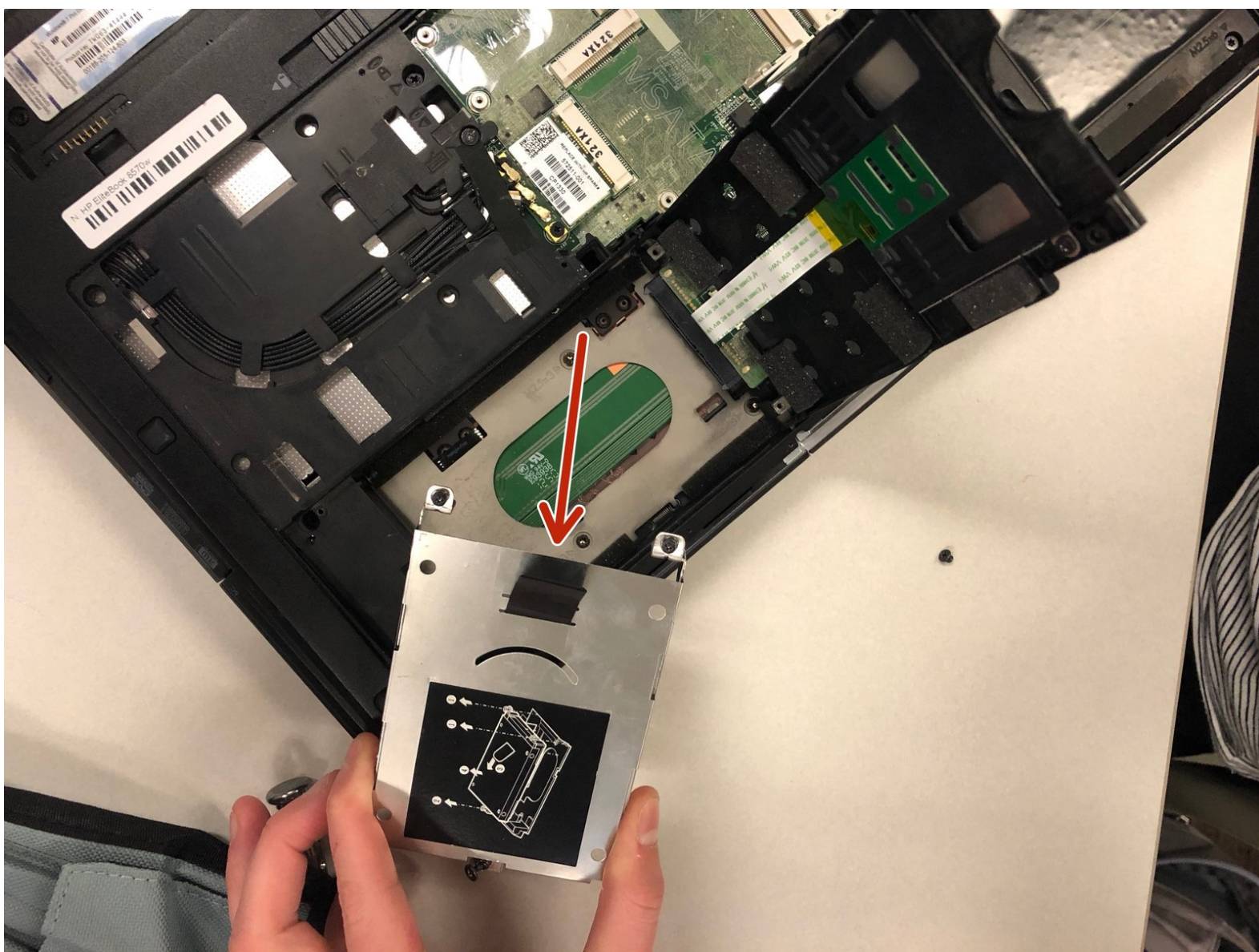




HP Elitebook 8570w Hard Drive Replacement

A guide to explain how to correctly remove a hard drive from a HP Elitebook 8570w in order to place a new hard drive in its place.

Written By: MJ Routh



INTRODUCTION

This replacement guide will help you disconnect the hard drive from your HP EliteBook 8570w in order to replace it with a new/different hard drive. It consists of 6 relatively easy steps that should guide you successfully.



TOOLS:

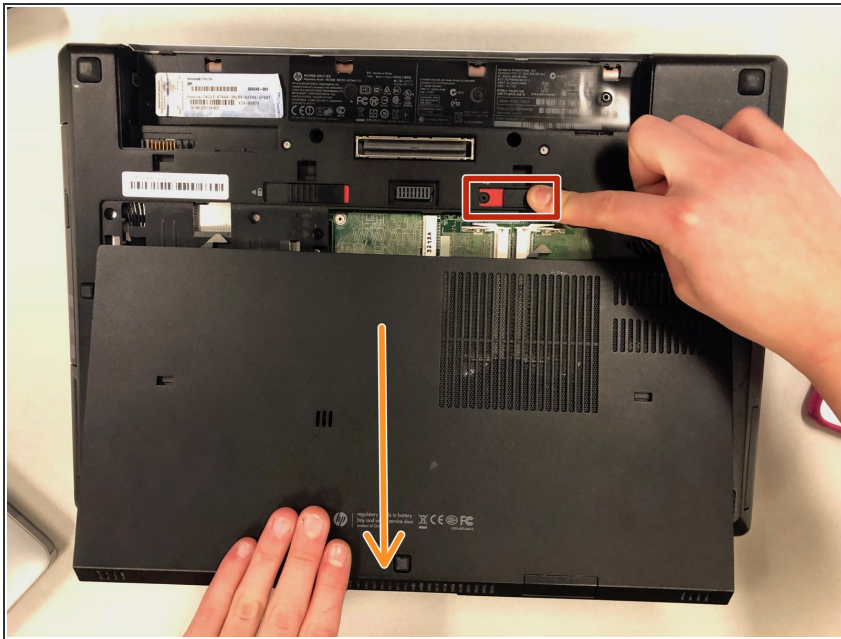
- [Phillips #1 Screwdriver](#) (1)



PARTS:

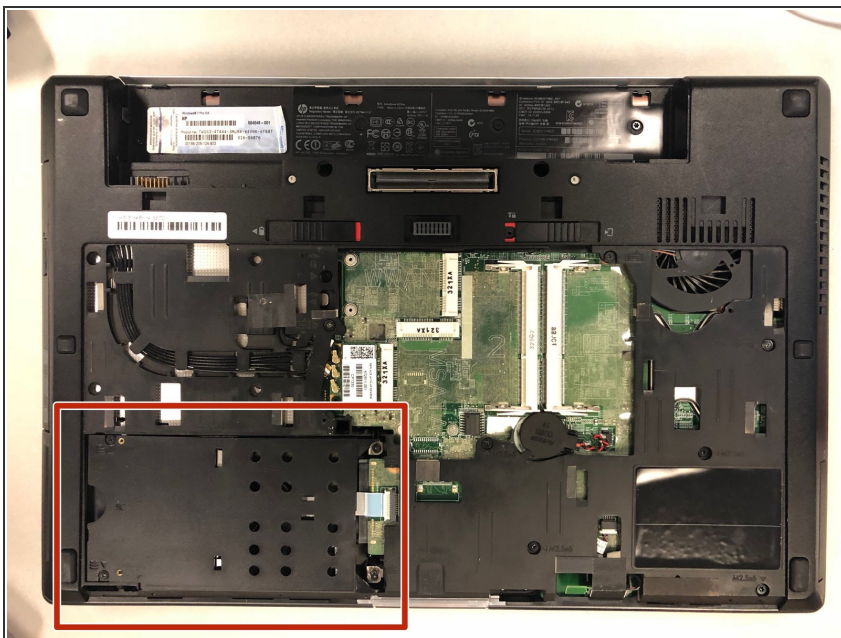
- [1 TB SSD / Upgrade Bundle](#) (1)
- [250 GB SSD / Upgrade Bundle](#) (1)
- [500 GB SSD / Upgrade Bundle](#) (1)
- [2 TB SSD](#) (1)

Step 1 — Hard Drive



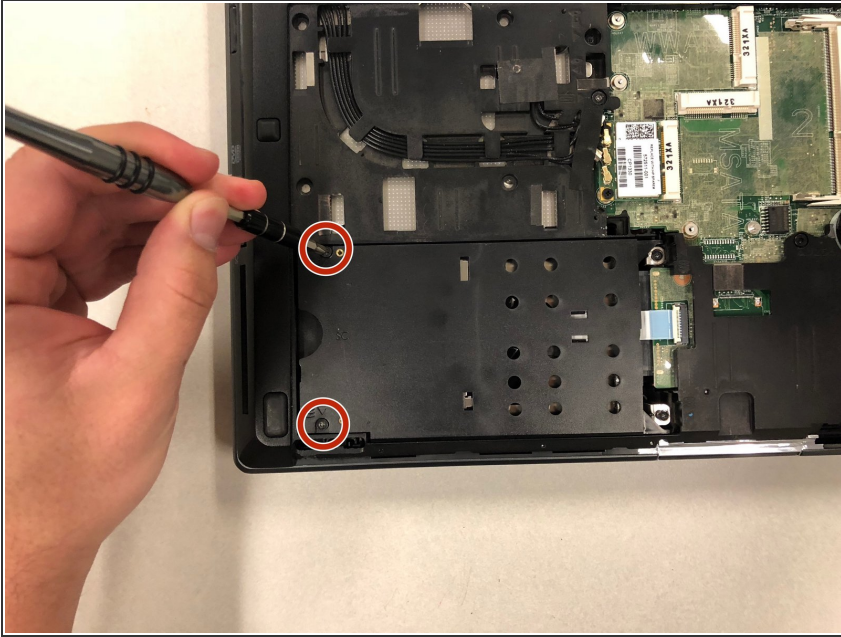
- To begin, you will need to remove the battery by sliding the left slider (red) to the left.
- Push the battery away from you to release it.
- Then, use the right slider to remove the computer's backing (shown in image)
- Slide the backing towards you to remove it.

Step 2



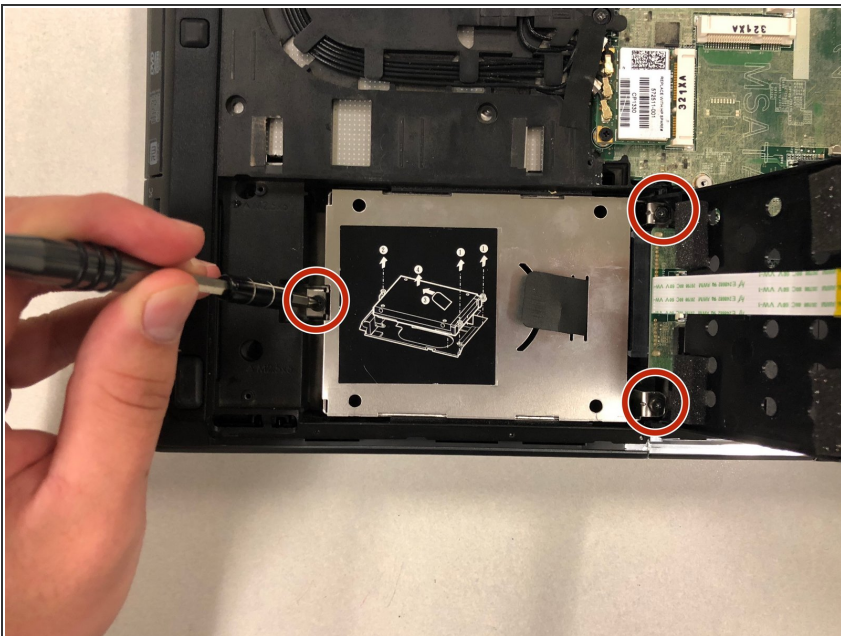
- Once the backing has been removed, you will be able to locate the computer's hard drive in the bottom left corner.

Step 3



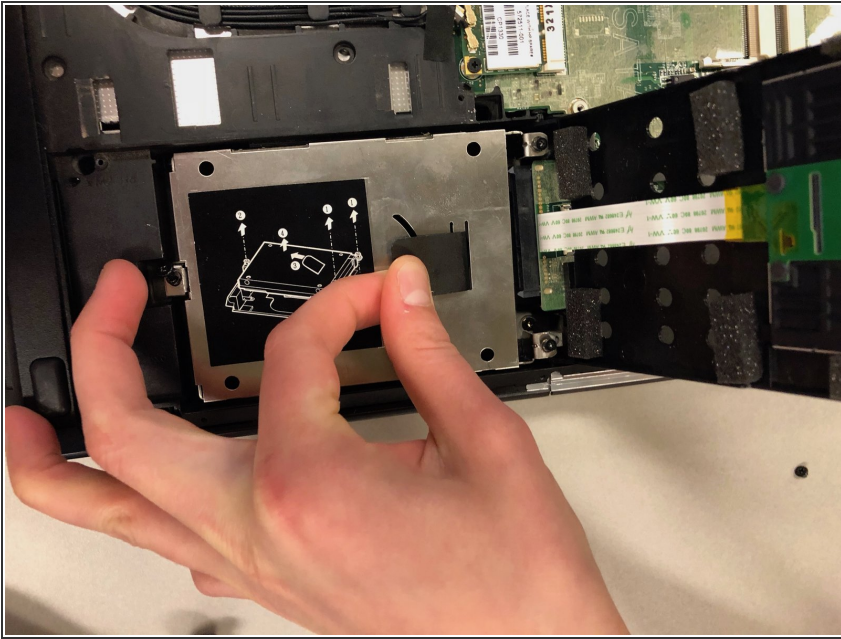
- To remove the hard drive compartment's cover, unscrew the two 0.8mm Phillips screws with a P1 Phillips-head screwdriver.
- Open by lifting the left side of the cover so it is facing upwards and outwards.
- ⓘ The black screws, not the gold screws.

Step 4



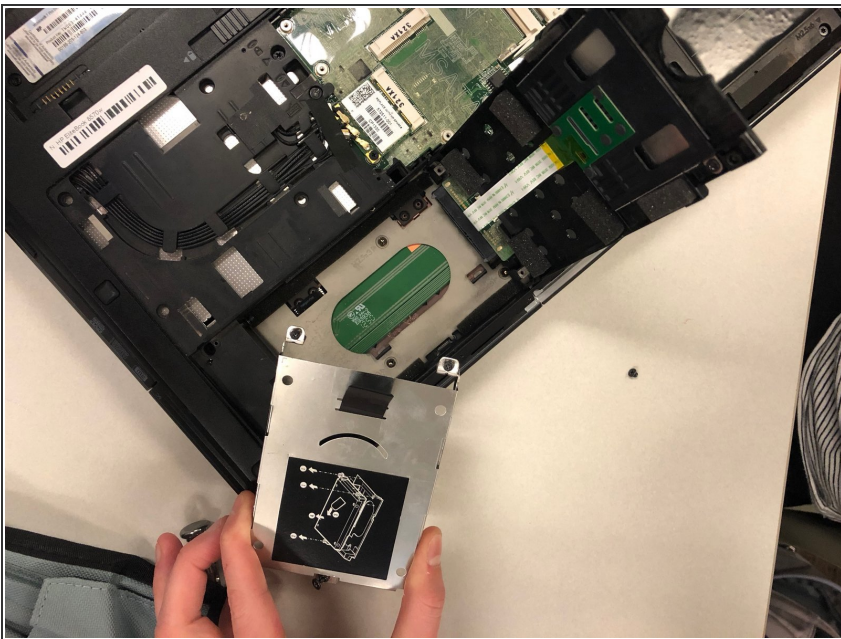
- Use the same screwdriver to loosen all three screws at the attachment points of the silver hard drive caddy.
- ⓘ These screws do not need to be completely removed.

Step 5



- To remove the caddy and gain access to the hard drive, pull the black tab up to release it from the caddy.
- ⓘ Once you can grab the tab with your fingers, pull it to the left to disconnect the hard drive from the computer.

Step 6



- The hard drive can now be replaced inside the caddy.

To reassemble your device, follow these instructions in reverse order.