



Philips Sonicare 2 Series Disassembly

This is a prerequisite only guide. Warning: Avoid using metal tools on the internal electronic device to avoid electric shock and bodily harm.

Written By: Jonathan Jarvis



INTRODUCTION

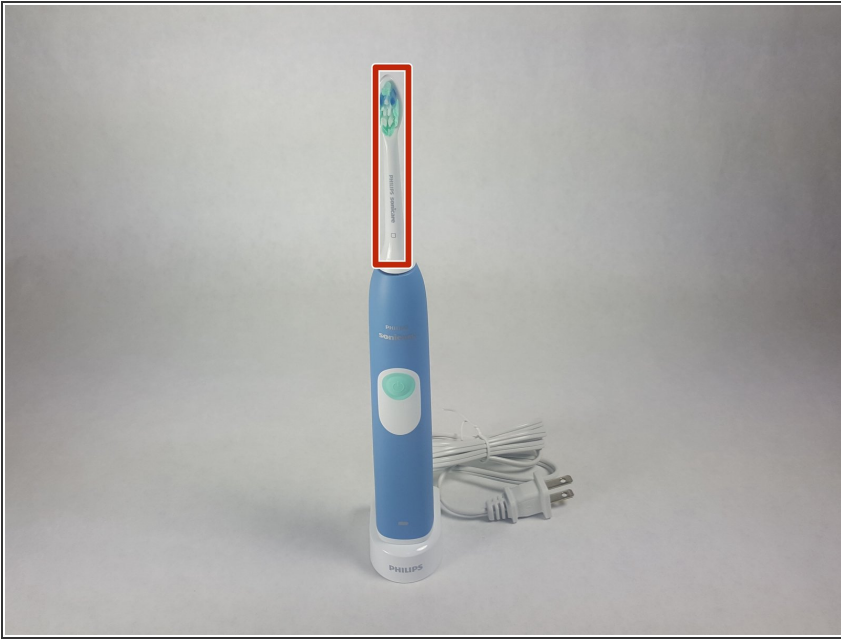
This is a prerequisite only guide. Make sure your toothbrush is unplugged from the charger before beginning the disassembly. Also use caution while using any metal tools. This is too avoid electric shock. This is guide is used for the disassembly for the Philips Sonicare 2 series toothbrush.



TOOLS:

- [Precision Tweezers Set](#) (1)
 - [iFixit Opening Tool](#) (1)
 - [Metal Spudger](#) (1)
 - [Flathead 3/32" or 2.5 mm Screwdriver](#) (1)
 - [64 Bit Driver Kit](#) (1)
-

Step 1 — Philips Sonicare 2 Series Disassembly



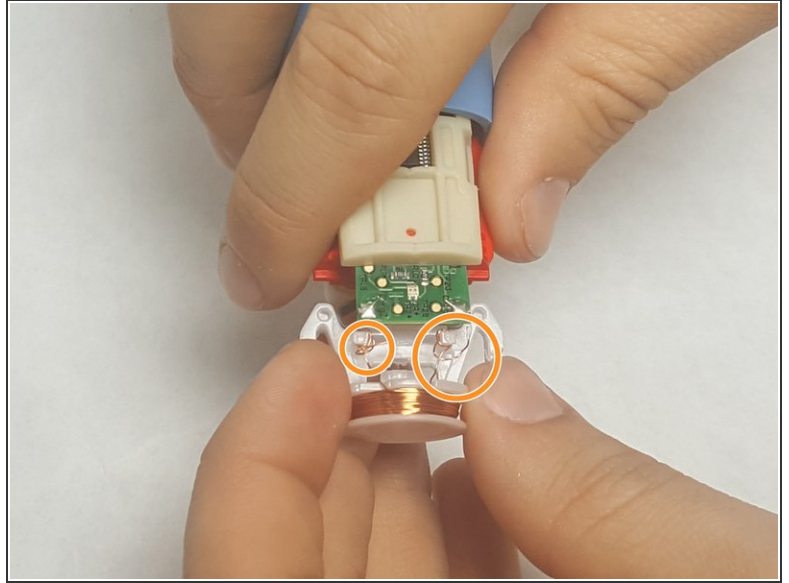
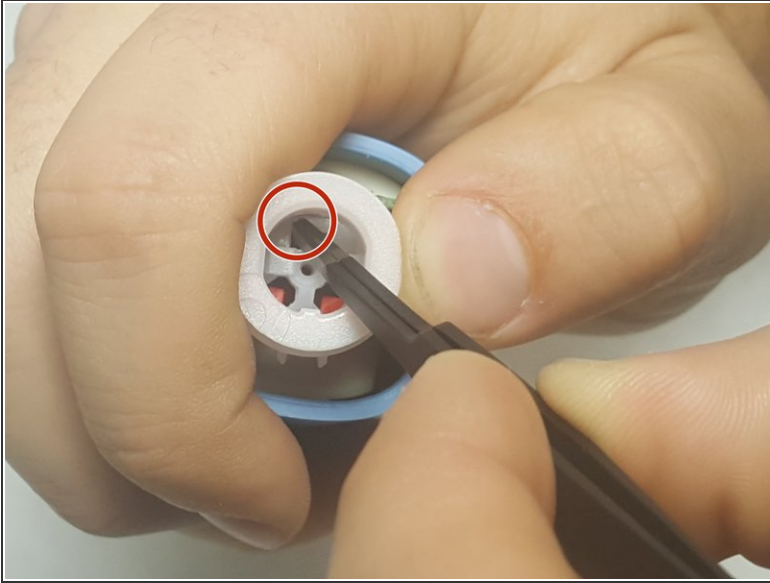
- Pull upwards to remove the brush head from the top of the device.

Step 2



- Remove the 12 mm T8 Torx screw from the bottom of the toothbrush. After removing the screw, pry off the base with a plastic opening tool.

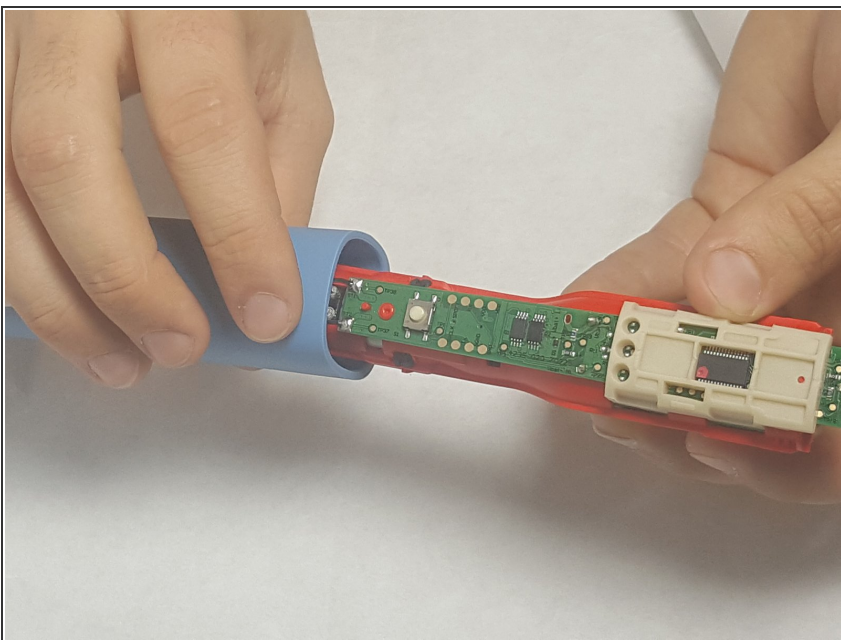
Step 3



- Remove the internal electronic mechanism from the housing by prying the red clips shown in the figure. This removes the charging port.

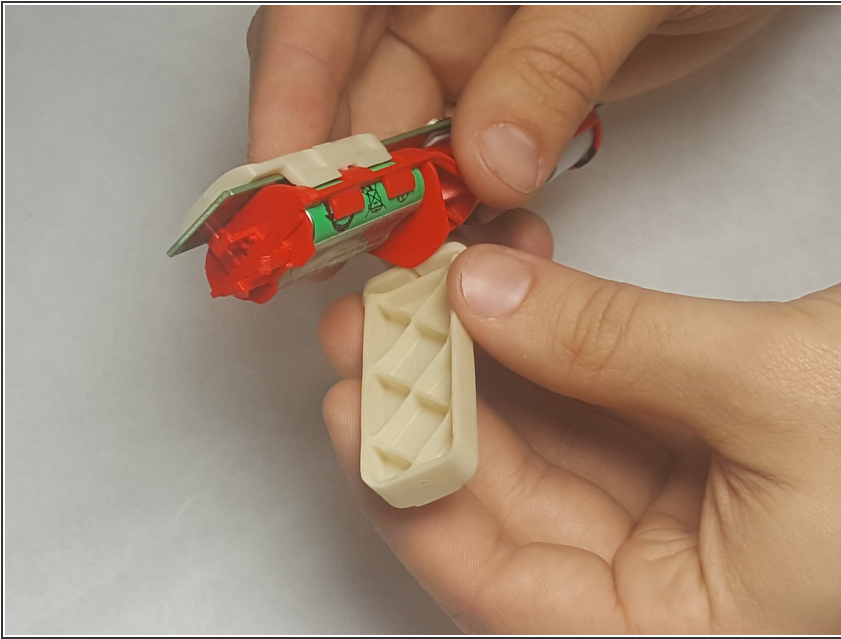
⚠ Be very careful not to damage the charging port during this step. Otherwise you will have to solder this part back to the device as shown in the second figure.

Step 4



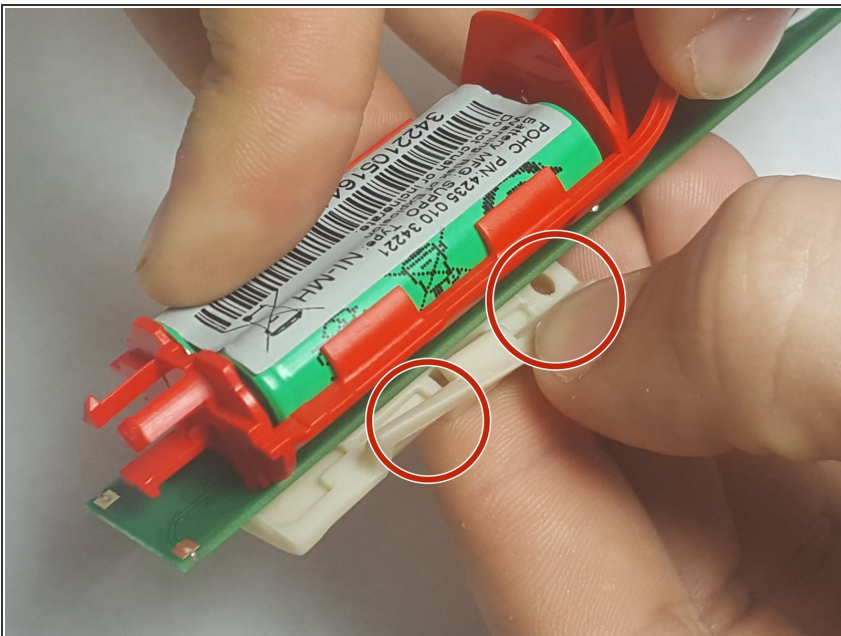
- Next you will be able to remove the internal electronic mechanism as shown in the figure.

Step 5



- Remove the white battery cover as shown in the figure.

Step 6



- Remove the white circuit board cover as shown. This cover will require you to pry off the piece from the grooves .

To reassemble your device, follow these instructions in reverse order.