



Dell Inspiron 15-5558 Hard Drive Replacement

The hard drive is a primary storage component....

Written By: Adam Lourenco



INTRODUCTION

The hard drive is a primary storage component. If you are losing files or experience the Blue Screen of Death, this might be because of a faulty hard drive. This guide shows you how to remove your hard drive in order to replace it.



TOOLS:

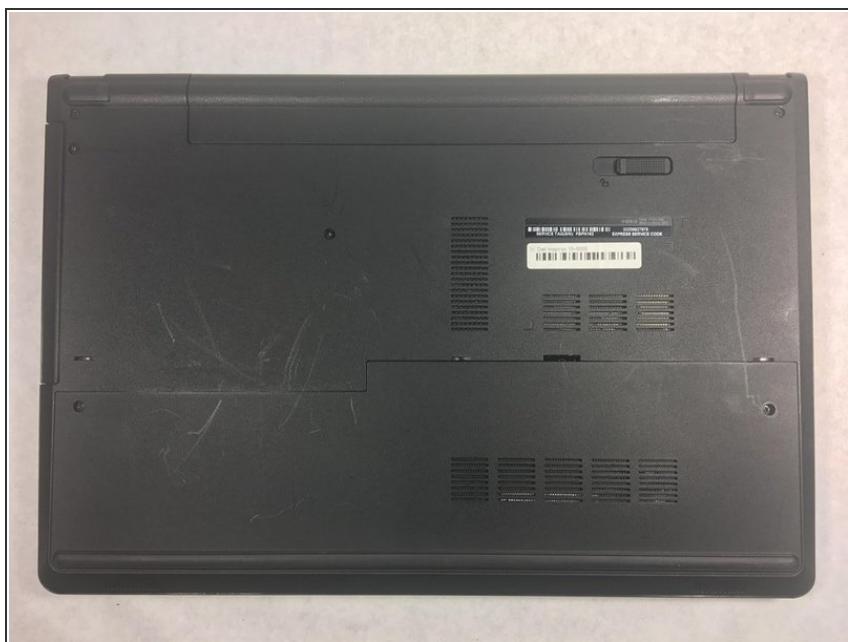
- [Spudger](#) (1)
- [Phillips #0 Screwdriver](#) (1)



PARTS:

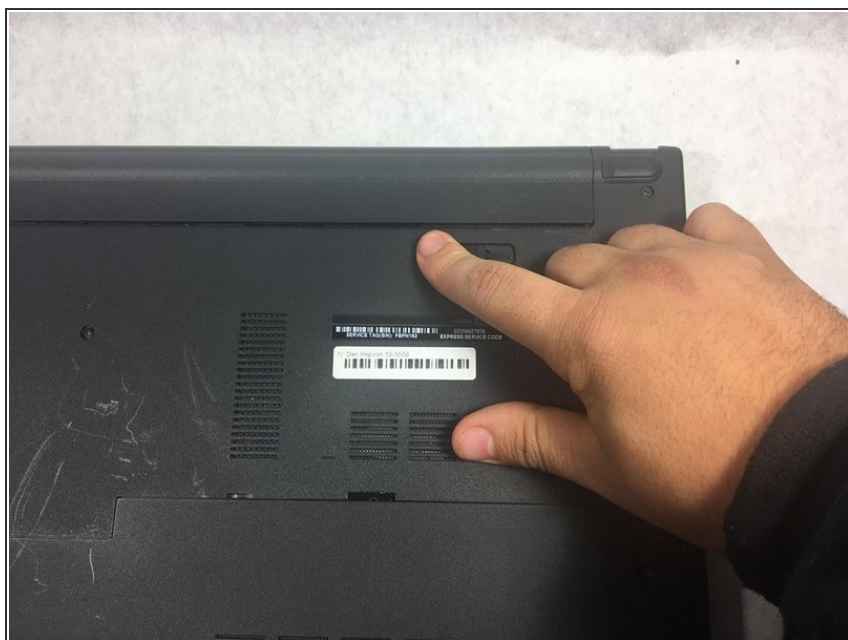
- [1 TB SSD](#) (1)
- [250 GB SSD](#) (1)
- [Crucial MX500 500 GB SSD](#) (1)
- [2 TB SSD](#) (1)

Step 1 — Battery



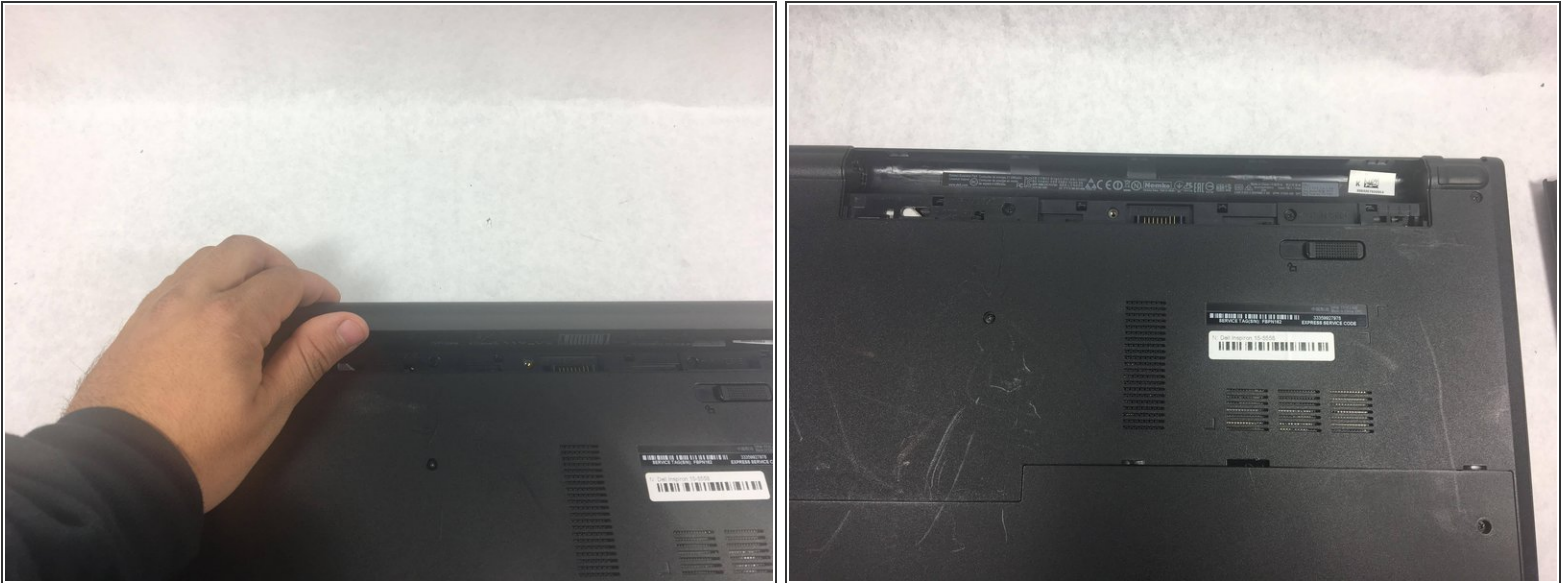
- ❗ Make sure you turn off the device before starting.
- Flip the device over and so the white bar code is on the right.

Step 2



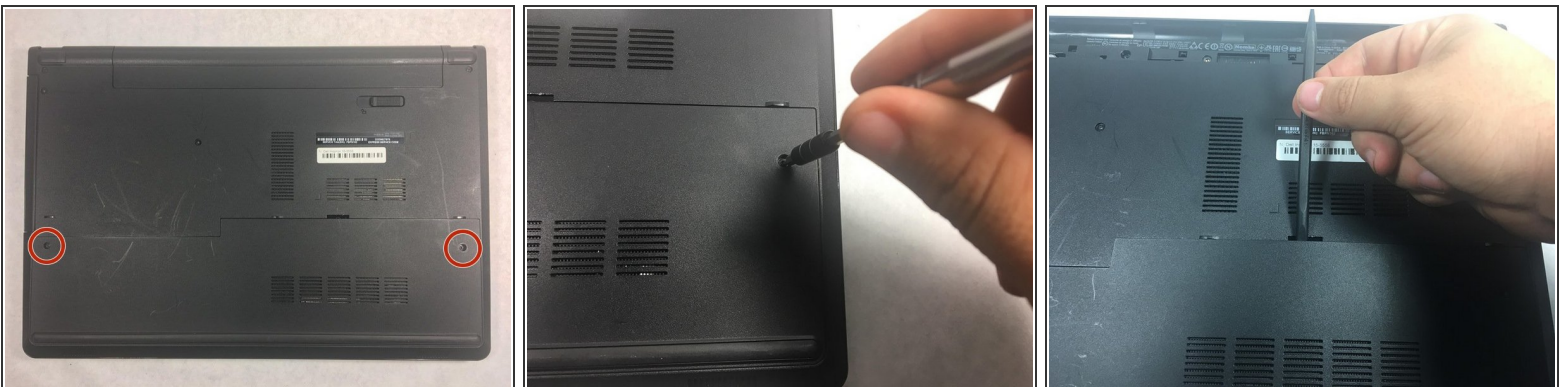
- Slide the battery latch all the way to the left until you hear the click and see the battery prop up.

Step 3



- Rotate the battery up and remove it.

Step 4 — Hard Drive



- Using a Phillips #0 screwdriver, unscrew the two 8mm screws from the panel.
- Take a spudger and wedge it between the panel and the base of the device.
- Push down on the spudger until you hear a click sound.
- Slide the spudger along the panel and continue to push down until the panel is completely detached.
- Remove the panel.

Step 5



- Using the Phillips #0 screwdriver, remove the four 8mm screws holding down the hard drive.
- Take the spudger and prop up the connector so it is no longer attached.
- Use the spudger and prop up the hard drive and remove it.

To reassemble your device, follow these instructions in reverse order.