



Lenovo Thinkpad T410i Screen Bezel Replacement

How to remove the screen bezel for the LCD screen and integrated webcam repair guides for the Lenovo Thinkpad T410i.

Written By: Gabriel Cordova



INTRODUCTION

This is just a prerequisite guide for the webcam and screen replacement guides.



TOOLS:

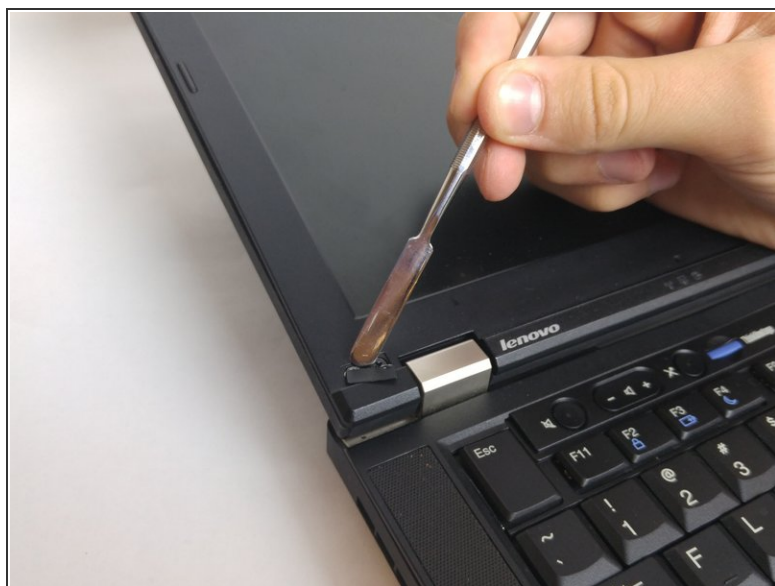
- [Spudger](#) (1)
- [Phillips #0 Screwdriver](#) (1)



PARTS:

- [Lenovo Thinkpad T410i Screen Bezel](#) (1)

Step 1 — Screen Bezel



- Use a spudger to remove the plastic covers from the LCD screen.

Step 2



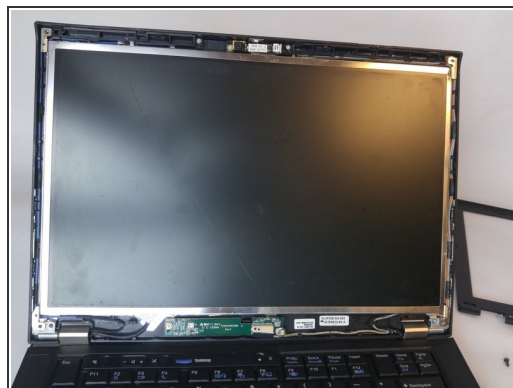
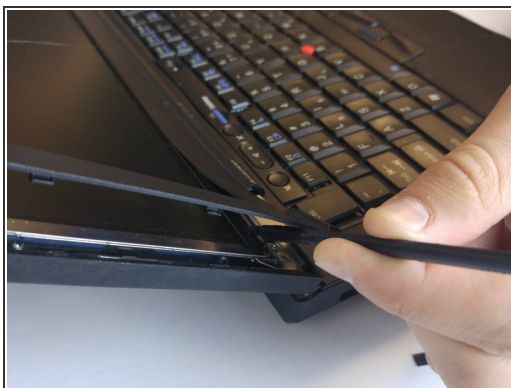
- Remove the two 6.0mm screws on each side using Philips #0 head screwdriver as shown in the picture.

Step 3



- Use a spudger to separate the bezel of the LCD screen.

Step 4



- Continue along the edges lifting up and prying off the plastic LCD bezel.

To reassemble your device, follow these instructions in reverse order.