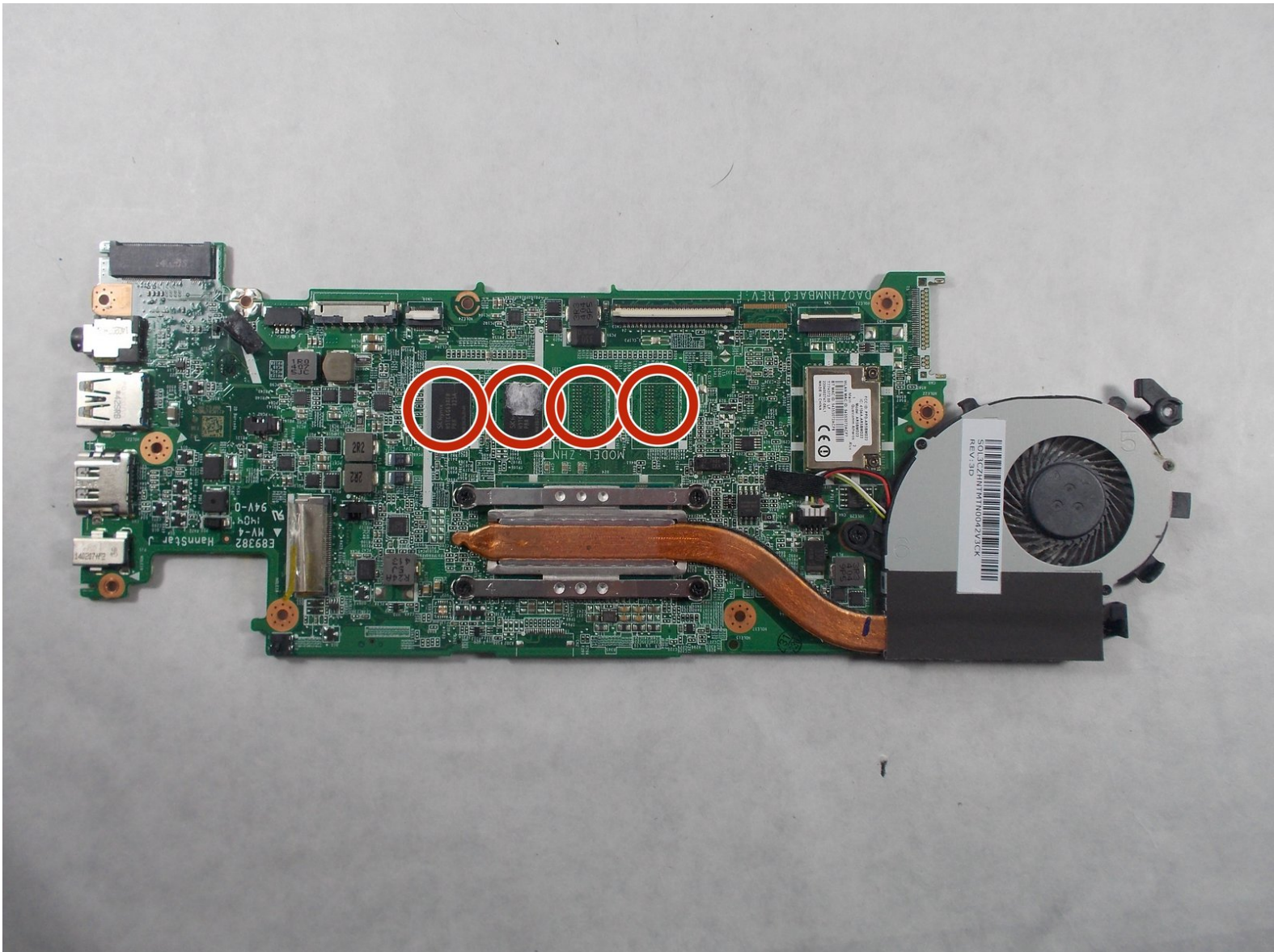




Acer Chromebook C720-2827 RAM Replacement

How to replace your Acer Chromebook C720-2827 RAM.

Written By: Kennedy Morales



INTRODUCTION

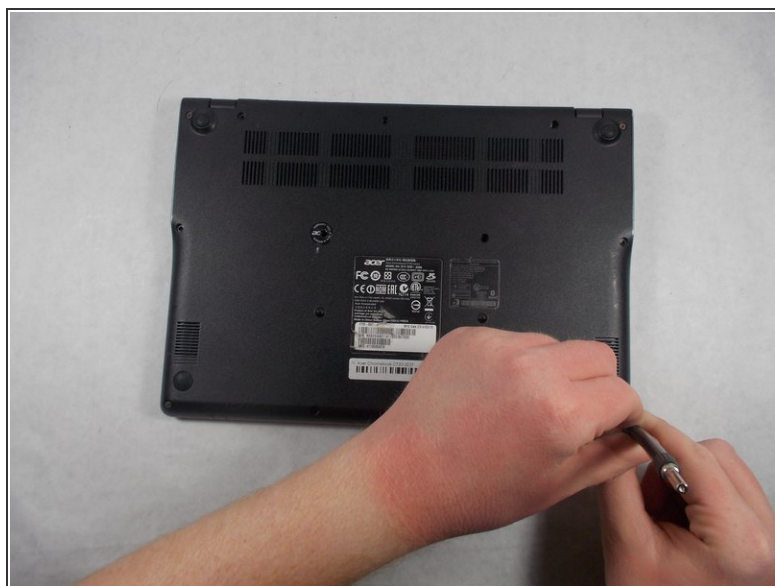
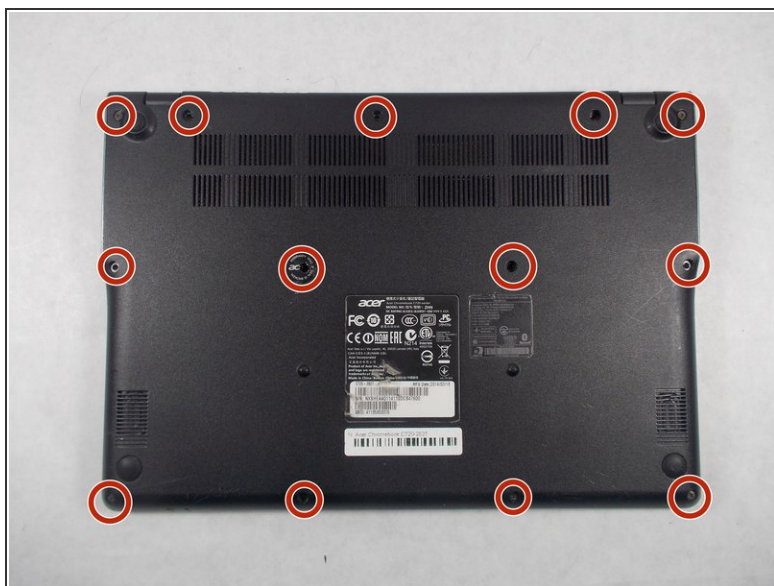
This guide explains how to replace your Chromebook's RAM. You will need to remove the Back Panel Assembly first. Then, you will need to remove the Battery and Speakers. Next, you will need to remove the Hard Drive. Then, you will need to remove the USB ports / SD Card Reader. After, you will need to take the Motherboard out to get to the RAM.



TOOLS:

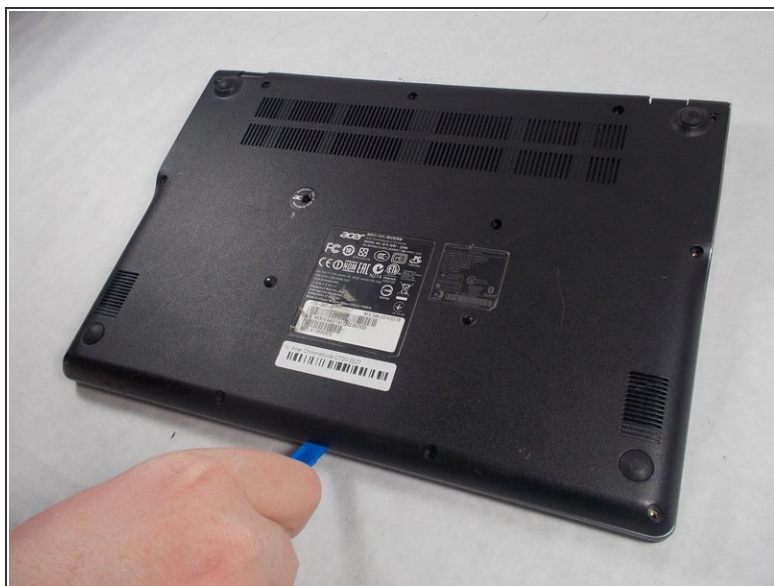
- [iFixit Opening Tool](#) (1)
 - [Spudger](#) (1)
 - [Soldering Workstation](#) (1)
 - [Phillips #1 Screwdriver](#) (1)
-

Step 1 — Back Panel Assembly



- Remove the thirteen 6.0mm screws on the back panel using your Phillips #1 screwdriver.

Step 2



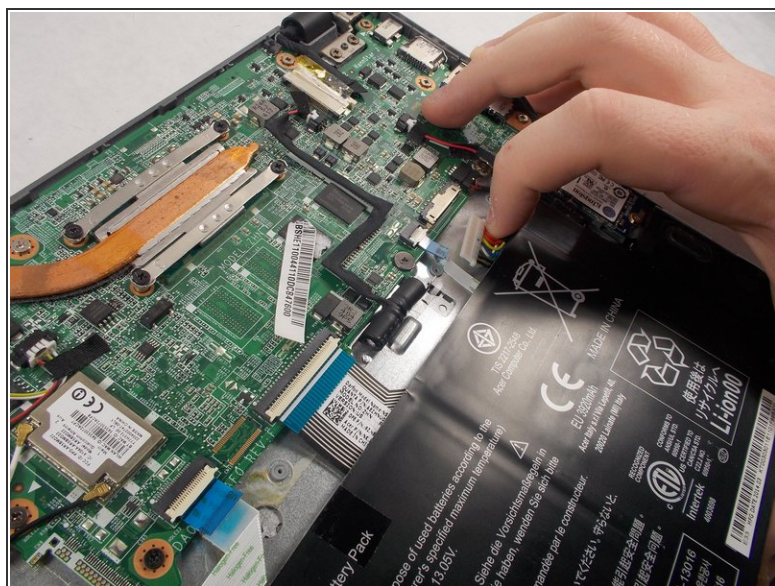
- Pry the back panel open with the plastic opening tool.

Step 3 — Battery



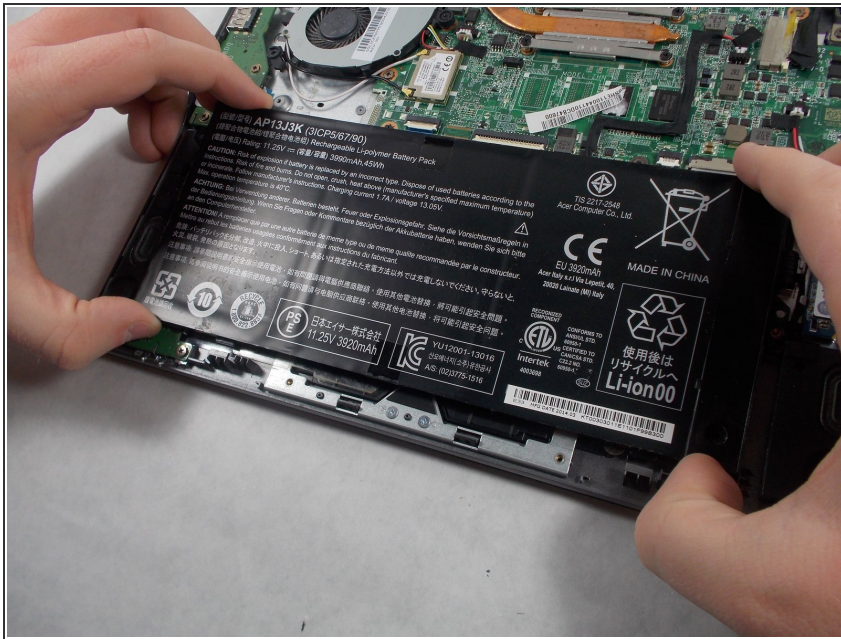
- Remove the two 6.0mm screws securing the battery with your Phillips #1 screwdriver.

Step 4



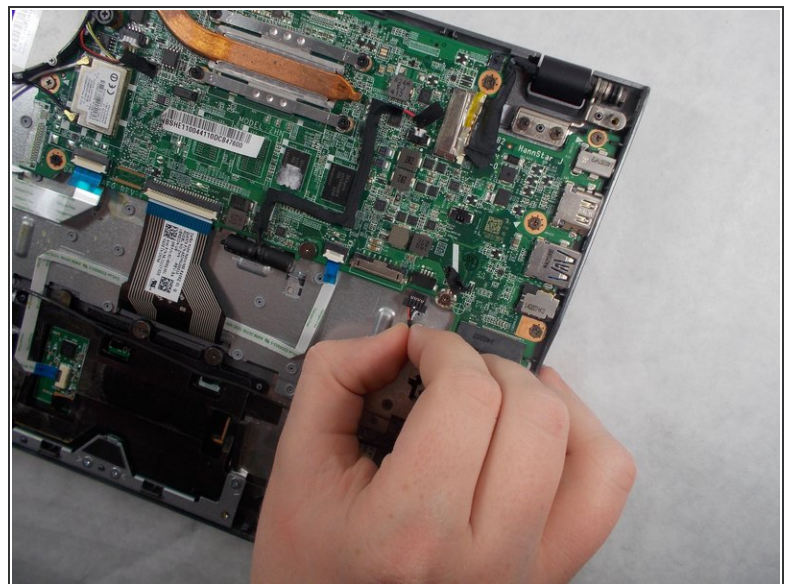
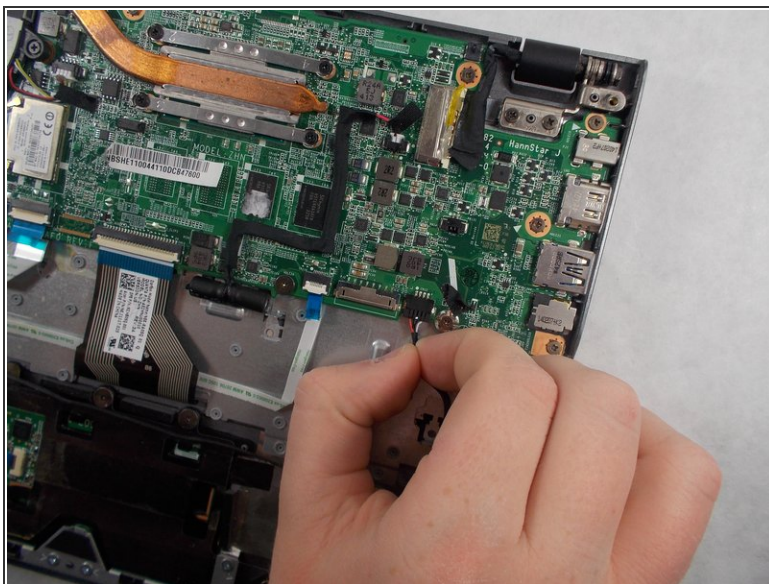
- Carefully pull out the battery wire connected to the battery port.

Step 5



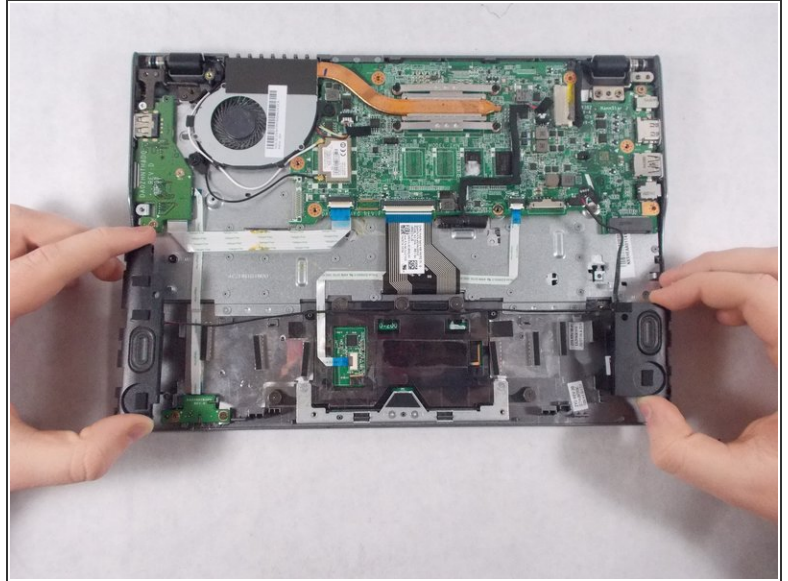
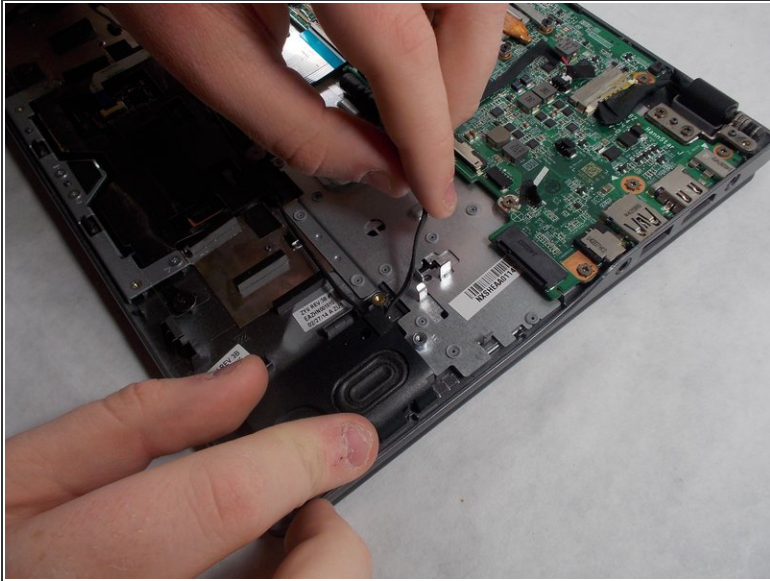
- Slowly lift the battery to remove it from the Chromebook.

Step 6 — Speakers



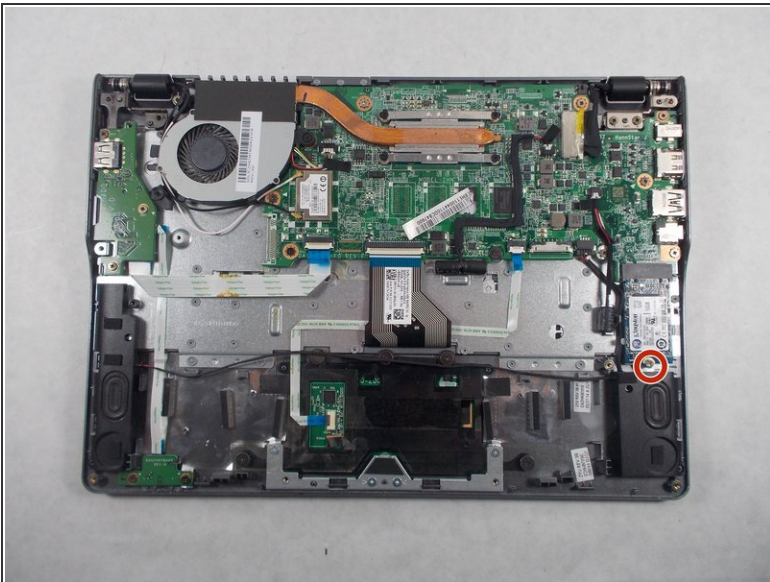
- Unplug the speaker wire from the motherboard.

Step 7



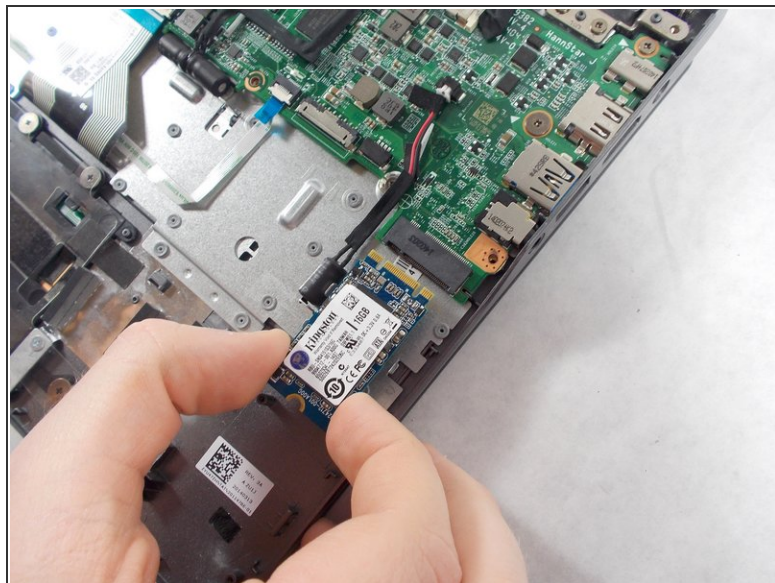
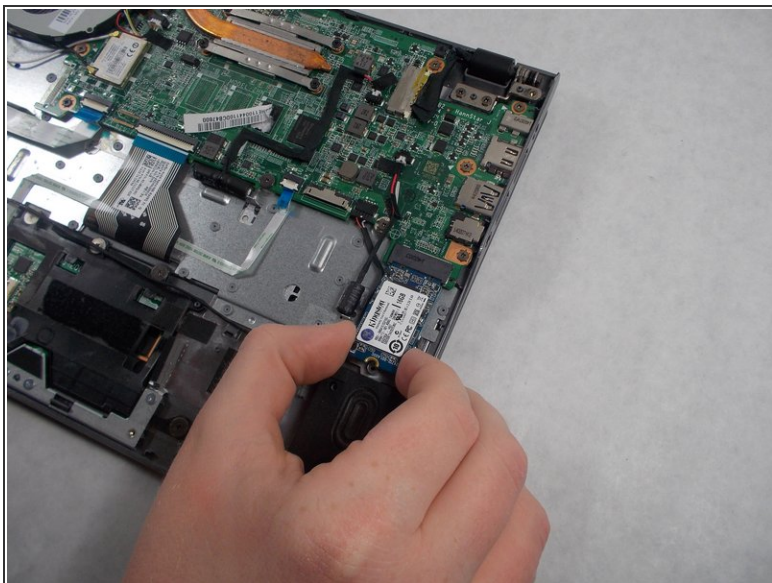
- Carefully pull out the speakers from each side of the Chromebook.

Step 8 — Solid State Drive



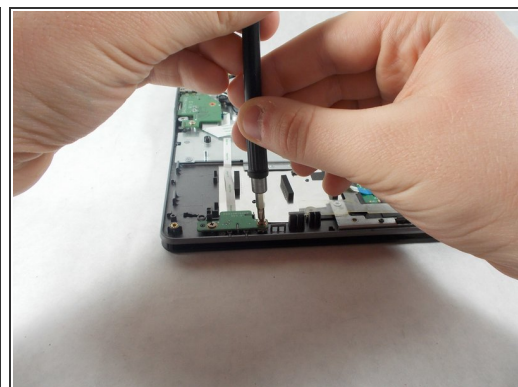
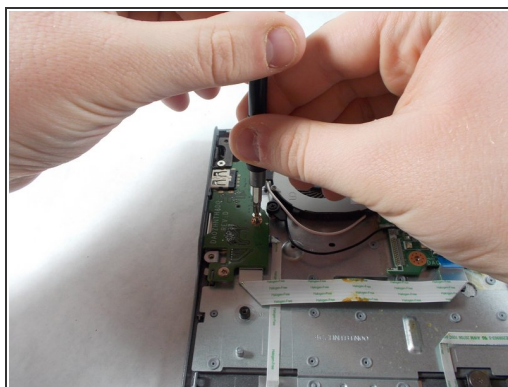
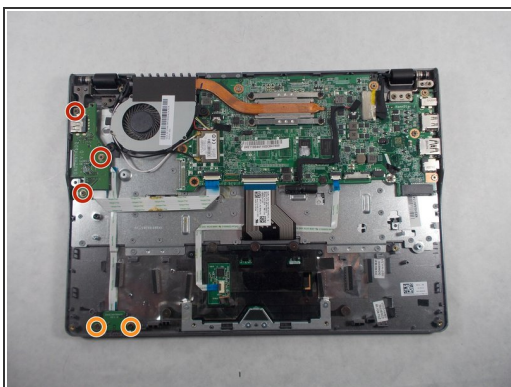
- Remove the single 3.0mm screw securing the solid state drive using a Phillips #1 screwdriver.

Step 9



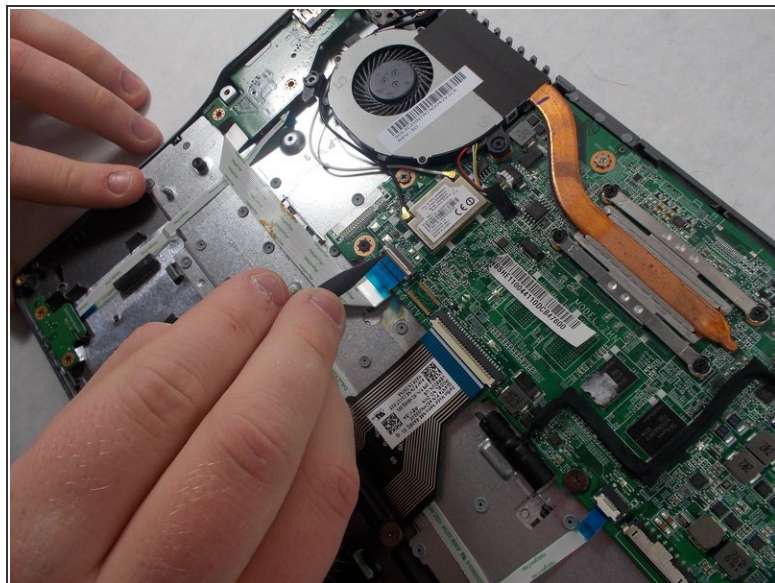
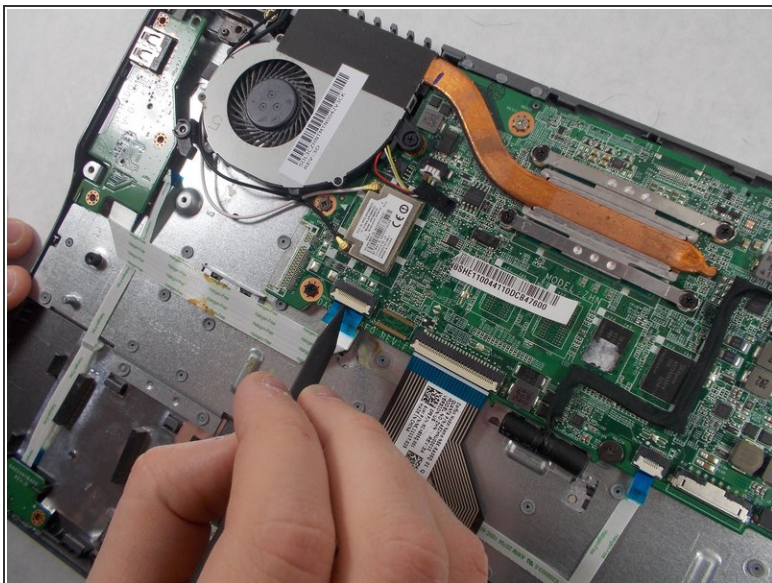
- Carefully pull out the solid state drive using two fingers.

Step 10 — USB Port/SD Card Reader



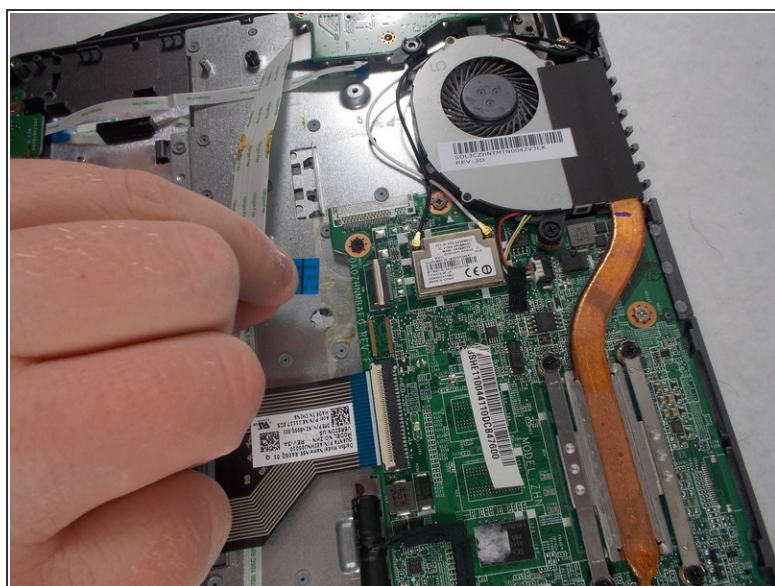
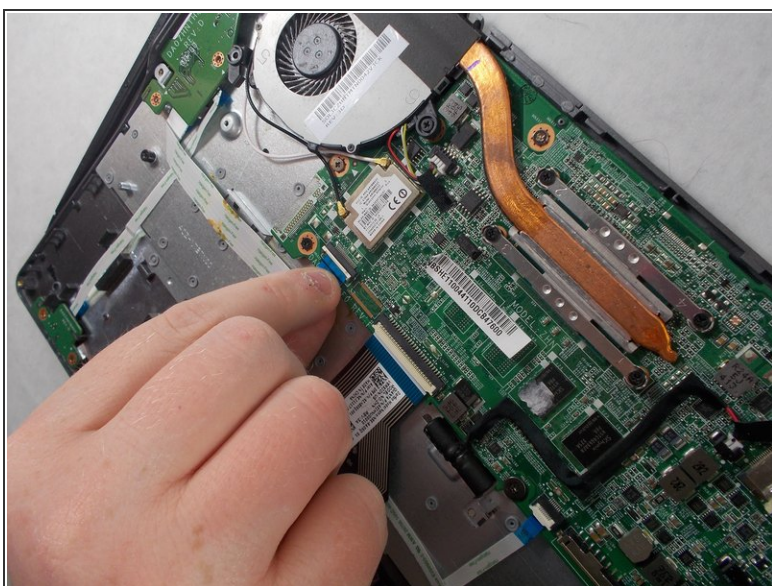
- Remove the three 6.0mm screws using the Phillips #1 screwdriver.
- Remove the two 3.0mm screws using the Phillips #1 screwdriver.

Step 11



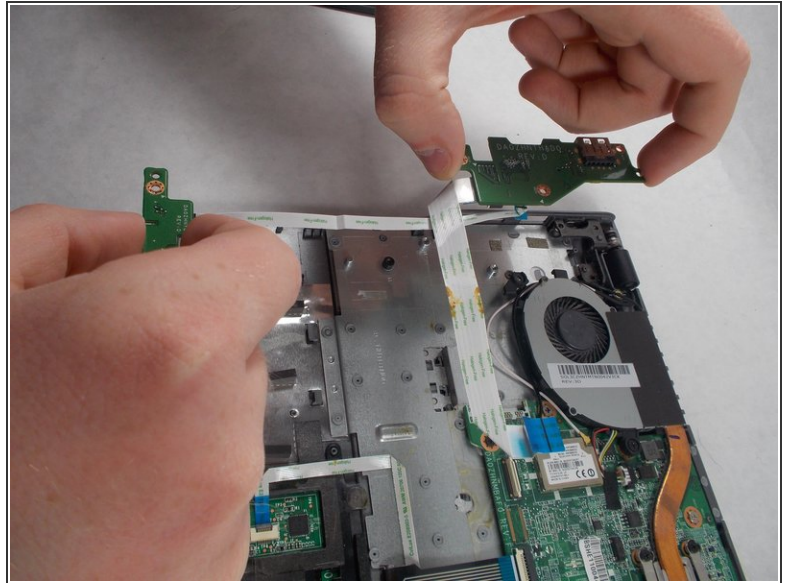
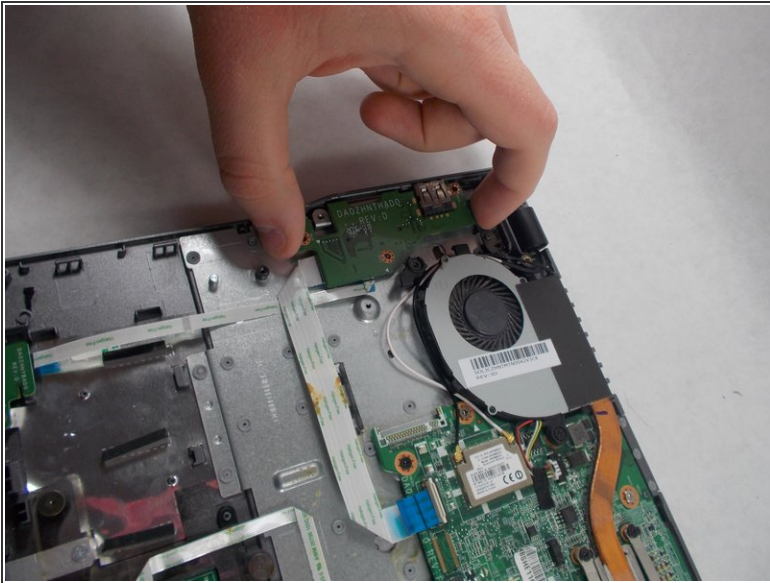
- Position the spudger under the switch that connects the ribbon cable to the motherboard.
- Flick the spudger up to flip the switch up.

Step 12



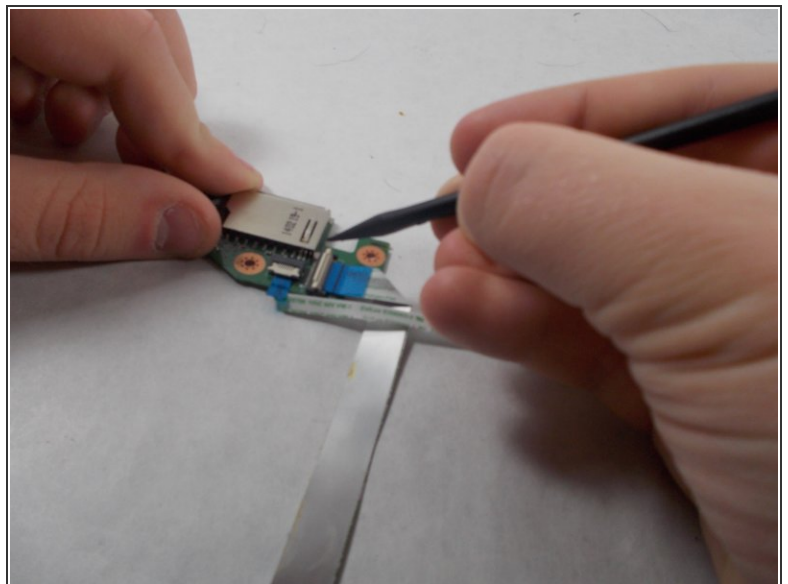
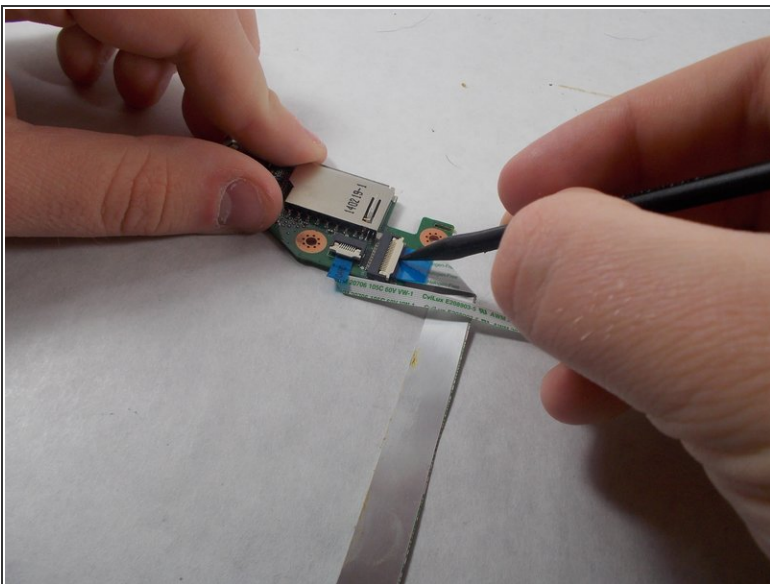
- Pull the blue tab on the ribbon cable to remove it.

Step 13



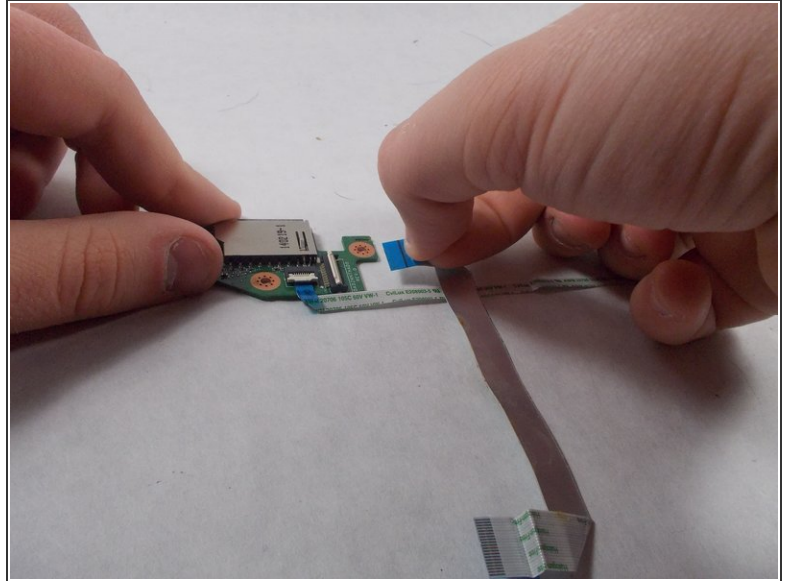
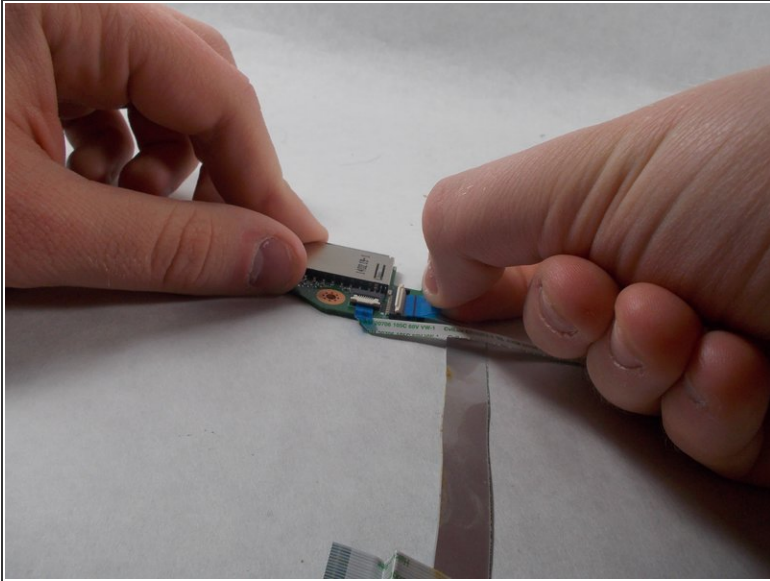
- Grab the edges of each piece of circuitry that is included with the SD Card Reader and USB Port.
- Pull each piece of circuitry out of the Chromebook and remove it from the device.

Step 14



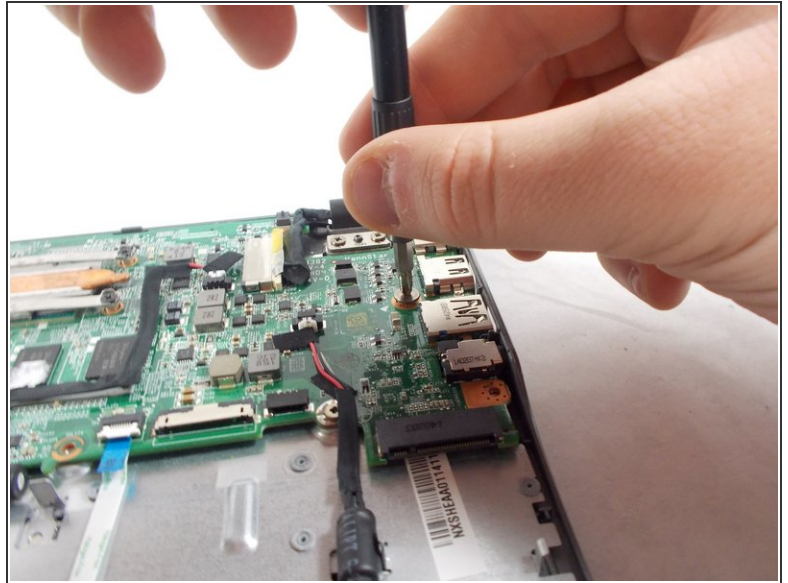
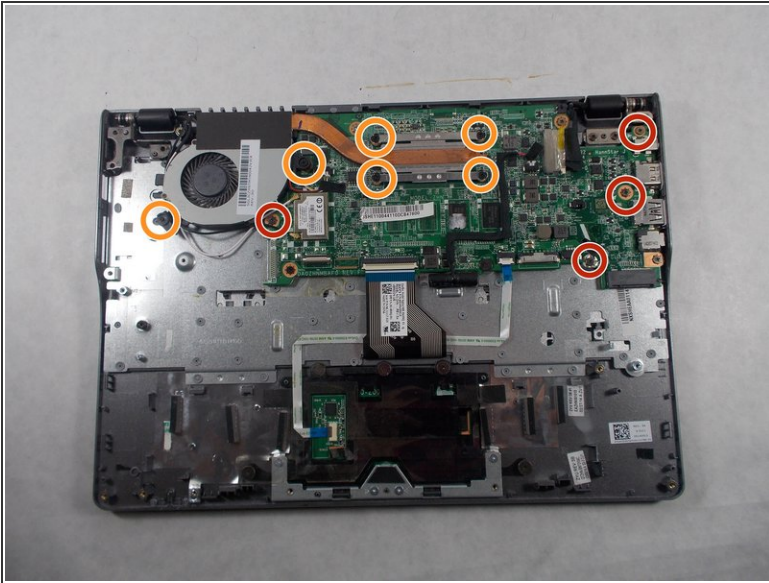
- Position the spudger under the switch.
- Flick the spudger up to flip the switch up.

Step 15



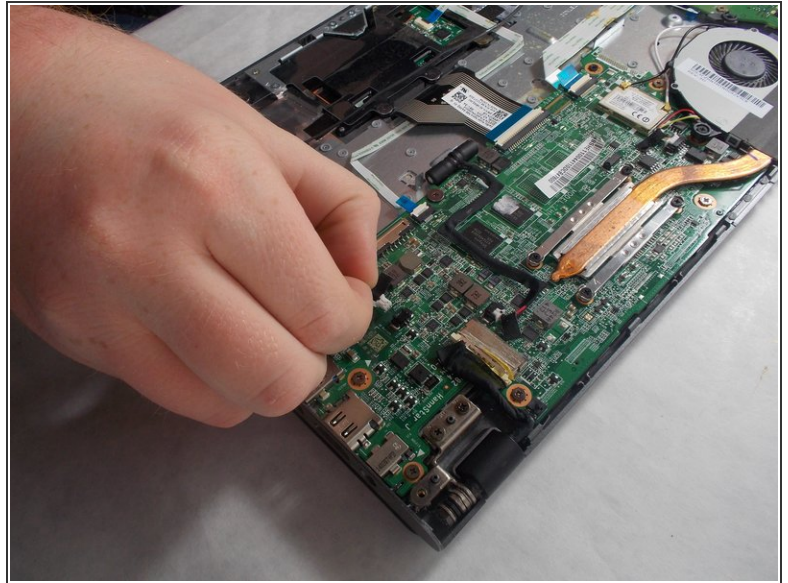
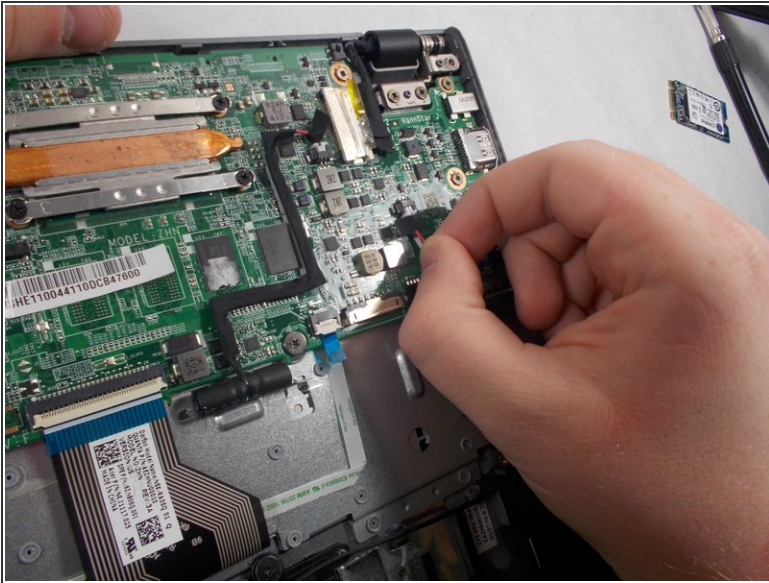
- Pull on the blue tab of the ribbon cable to remove the ribbon cable.
- Repeat the previous step and this step with the other ribbon cable that is attached to the SD Card Reader/USB Port.

Step 16 — Motherboard



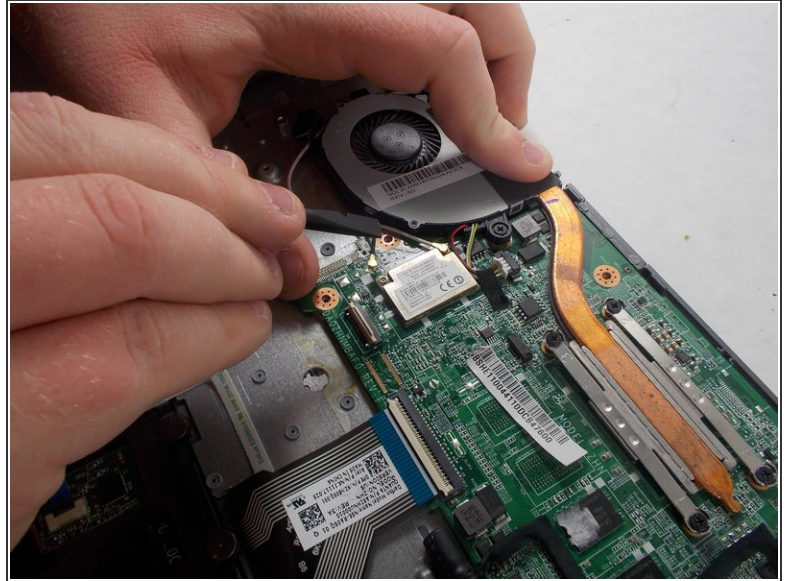
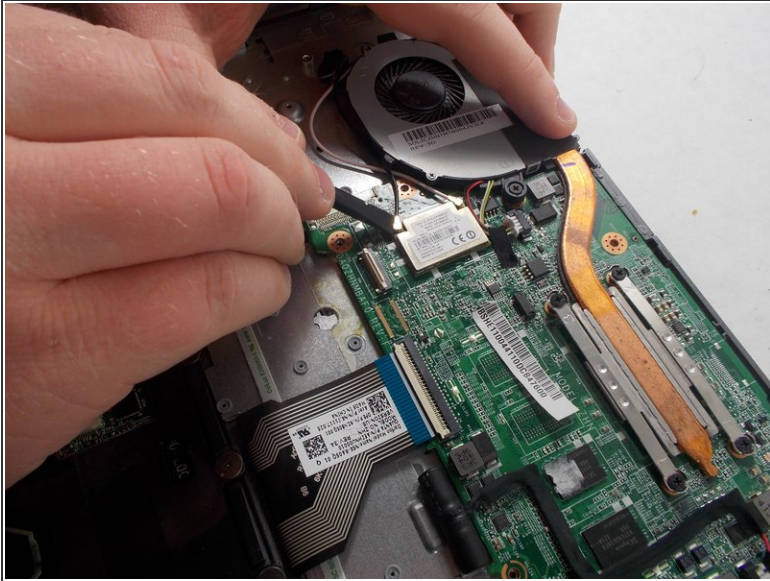
- Using the Phillips #1 screwdriver, remove the four 3.0mm screws.
- Loosen the six 3.0mm CPU screws using the Phillips #1 screwdriver.
- ⓘ The six 3.0mm CPU screws do not come out of the motherboard.

Step 17



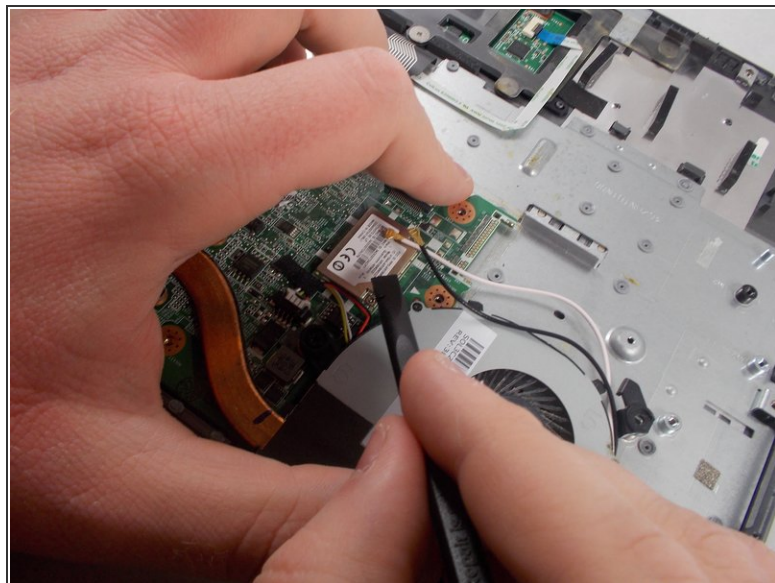
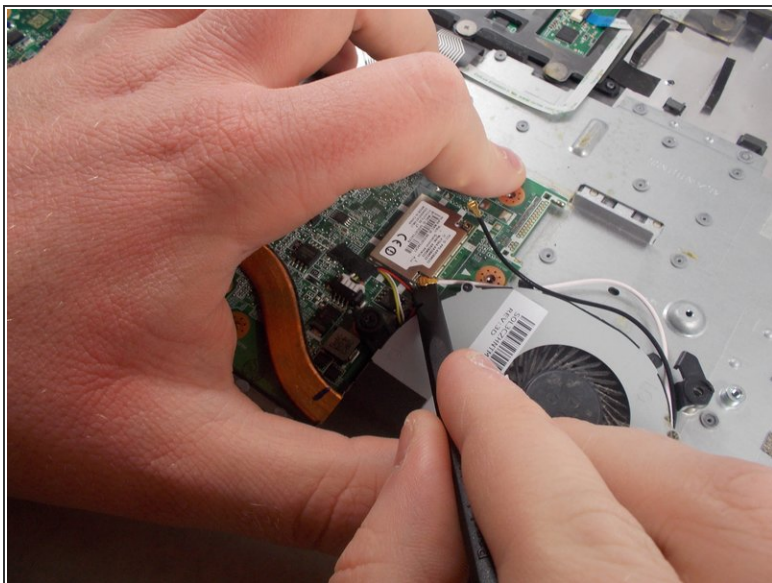
- Grab the wire for the two pin connector.
- Pull the wire to disconnect it from the motherboard.

Step 18



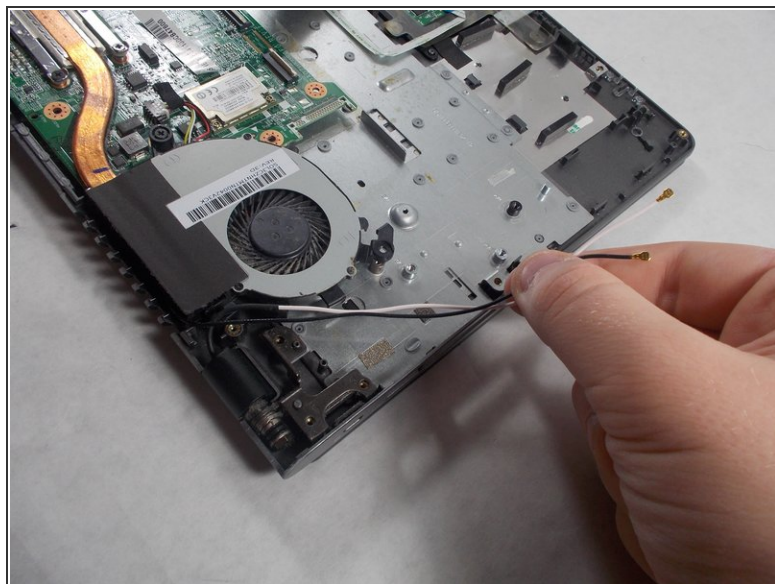
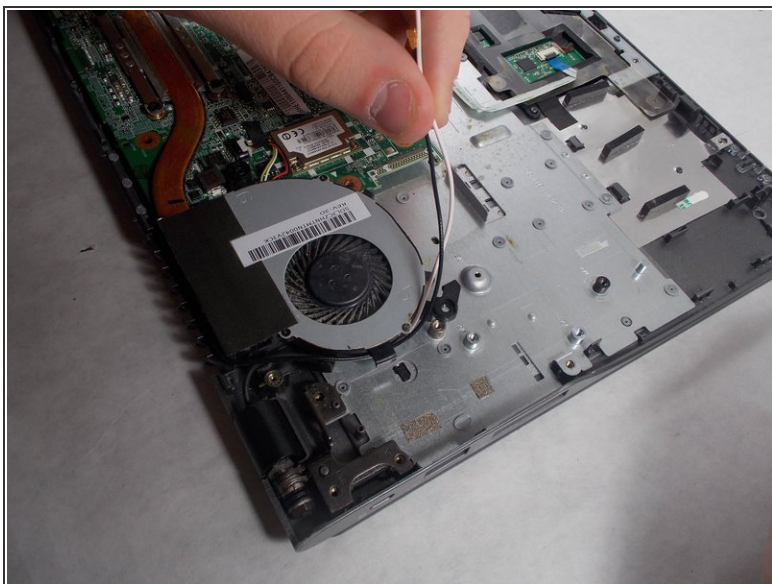
- Place the back of the spudger under the black wire that connects the wireless card to the motherboard.
- Flick the spudger up to disconnect the cable from the motherboard.

Step 19



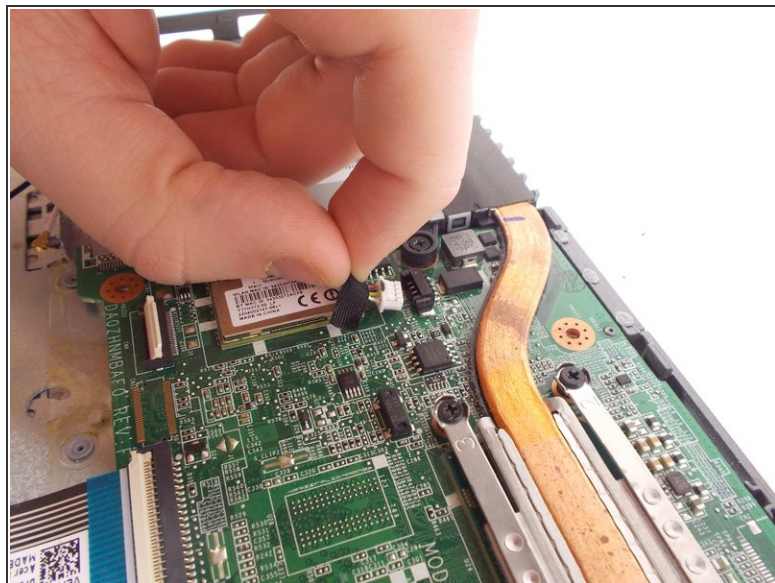
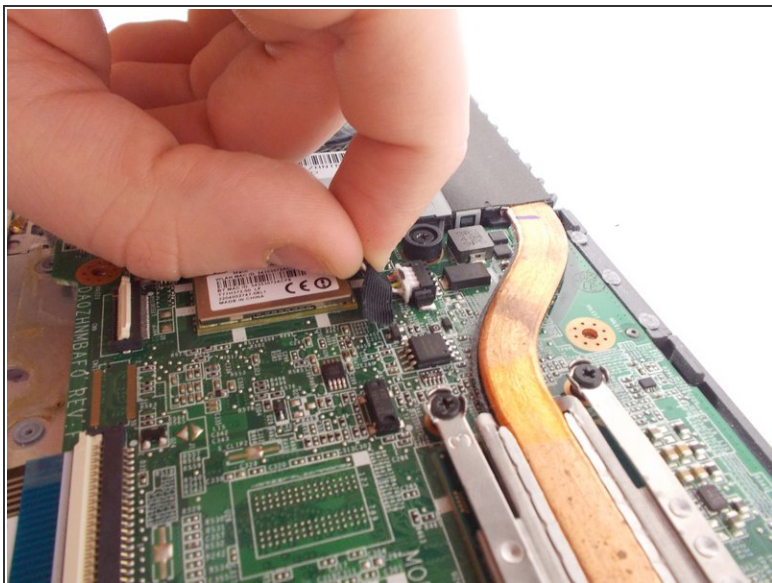
- Place the back of the spudger under the white coaxial antenna wire that connects the wireless card to the motherboard.
- Flick the spudger up to disconnect the cable from the motherboard.

Step 20



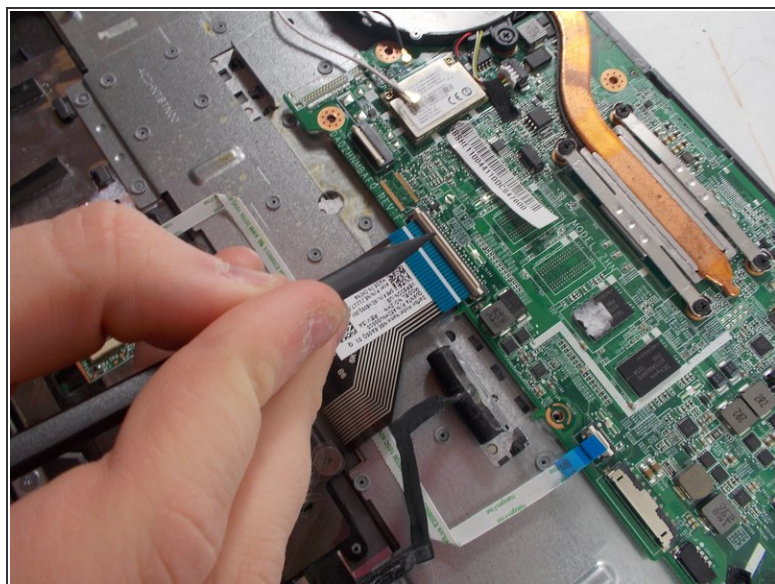
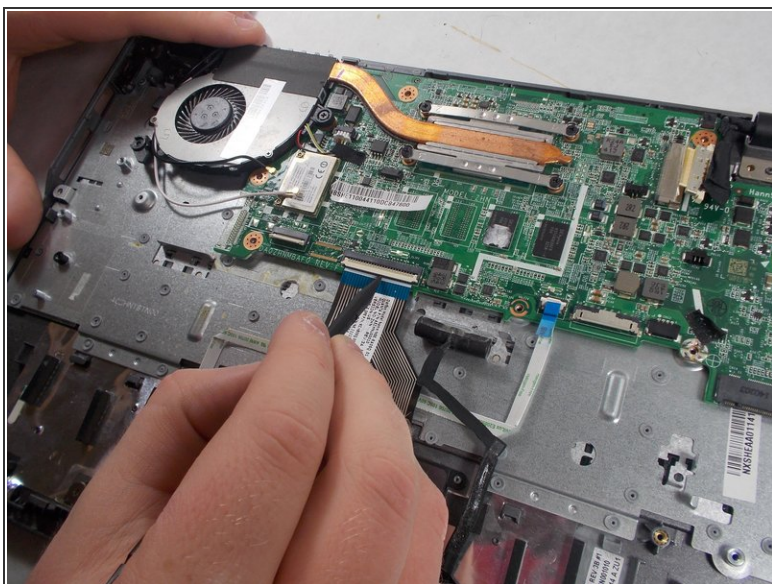
- Take both wires and unravel them from the CPU fan.

Step 21



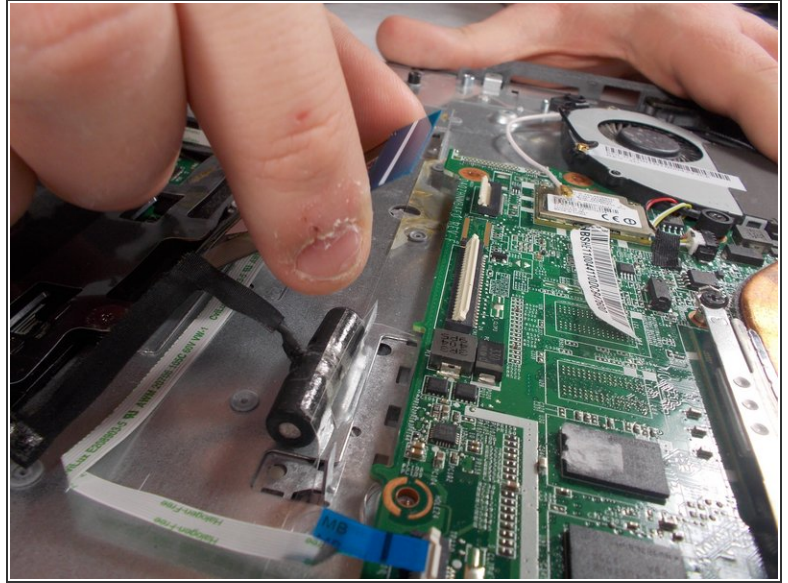
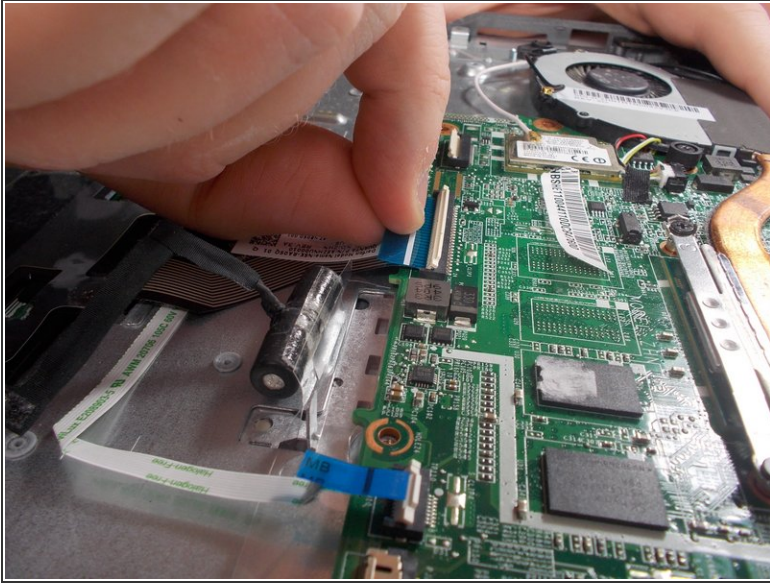
- Firmly grasp the red, yellow, and white cords with two fingers.
- Pull the cords to unplug it.

Step 22



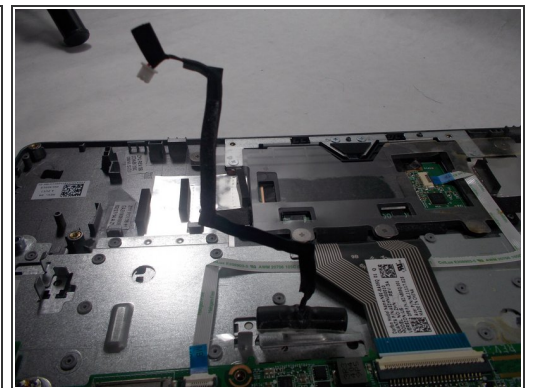
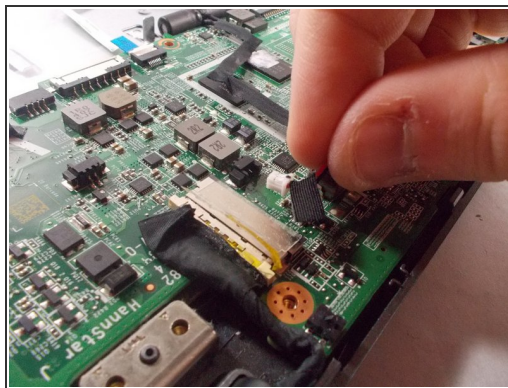
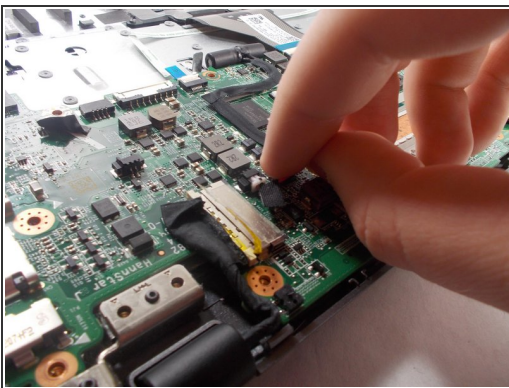
- Position the spudger under the switch of the big ribbon cable.
- Flick the spudger up to flip the switch up.

Step 23



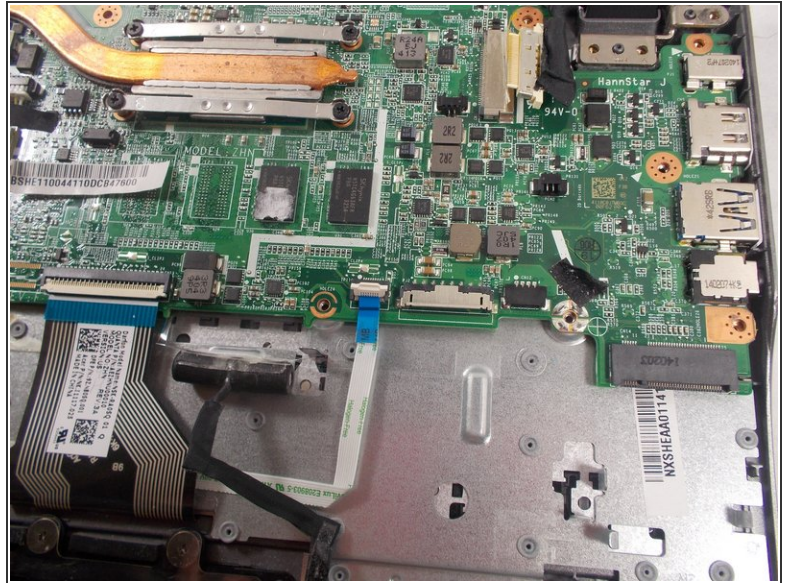
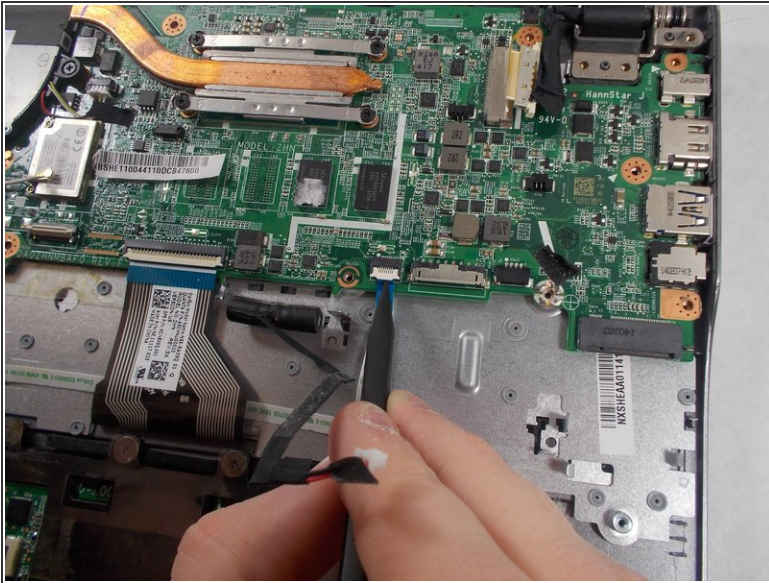
- Grab the blue tab of the ribbon cable.
- Pull on the blue tab to disconnect the ribbon cable.

Step 24



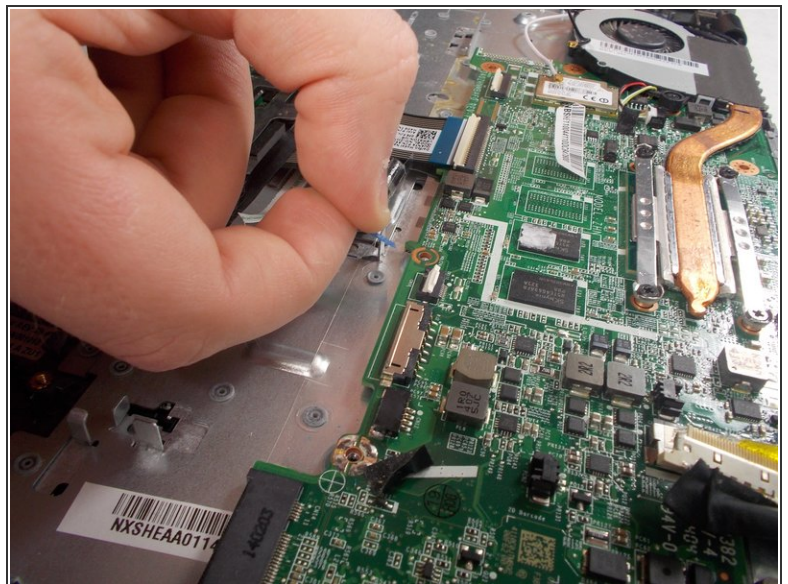
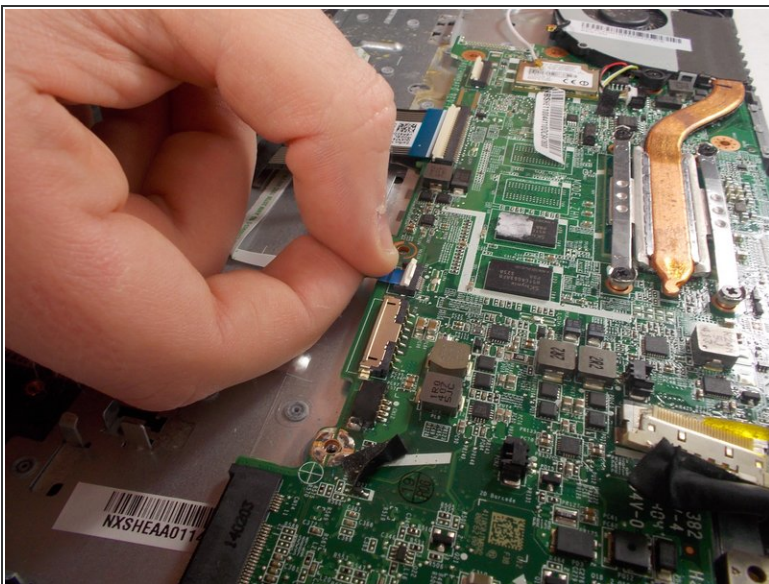
- Grab the red and black cable near the display cables, this is the cable to the other two pin connector.
- Pull on the wire to disconnect it from the motherboard.
- Flip the wire and the connector up to move it out of the way.

Step 25



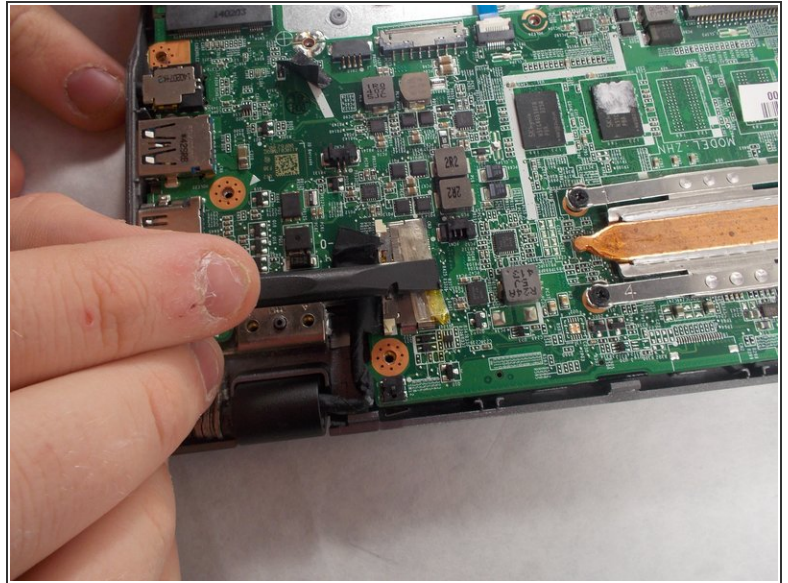
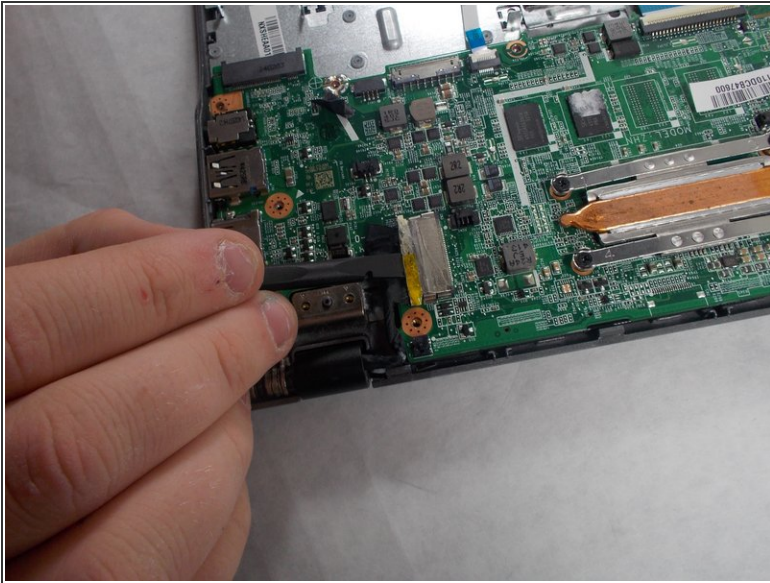
- Position the spudger under the switch for the smaller ribbon cable.
- Flick the spudger up to flip the smaller switch up.

Step 26



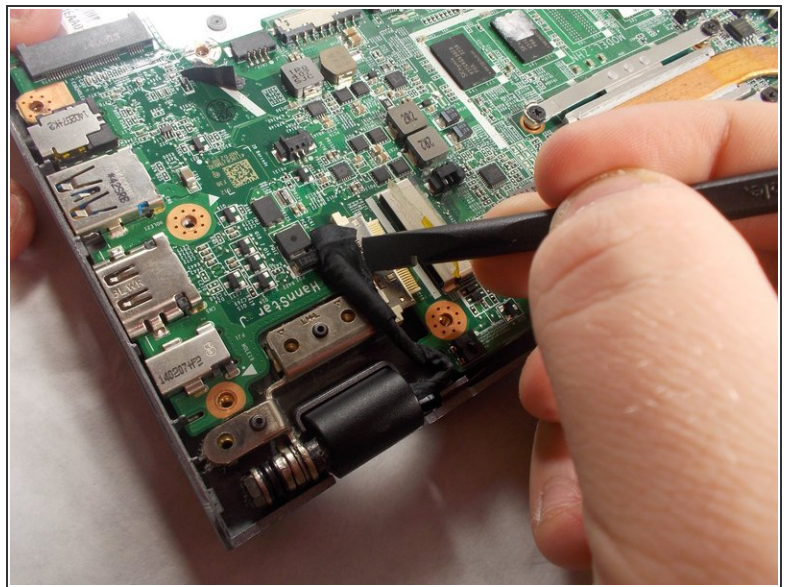
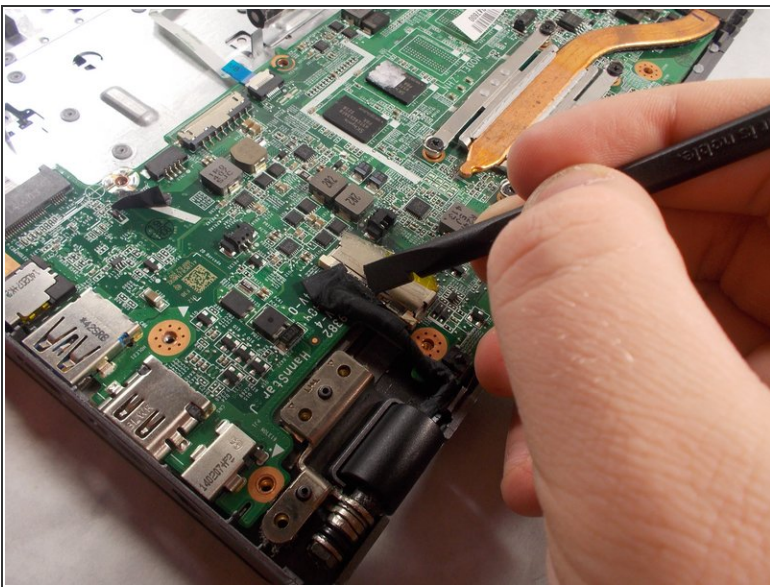
- Grab the blue tab on the ribbon cable.
- Pull on the tab to disconnect the ribbon cable from the motherboard.

Step 27



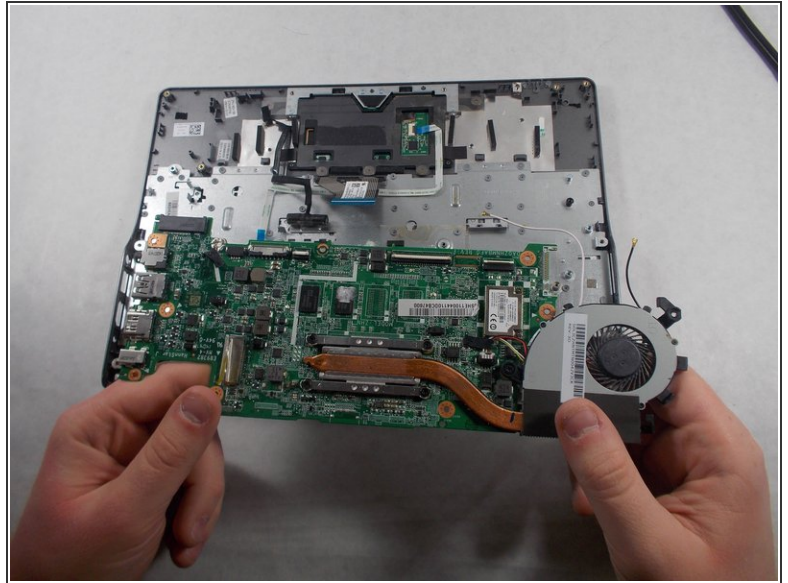
- Position the back of the spudger at the edge of the tape that holds the display cable in.
- Peel the tape back so it is out of the way.

Step 28



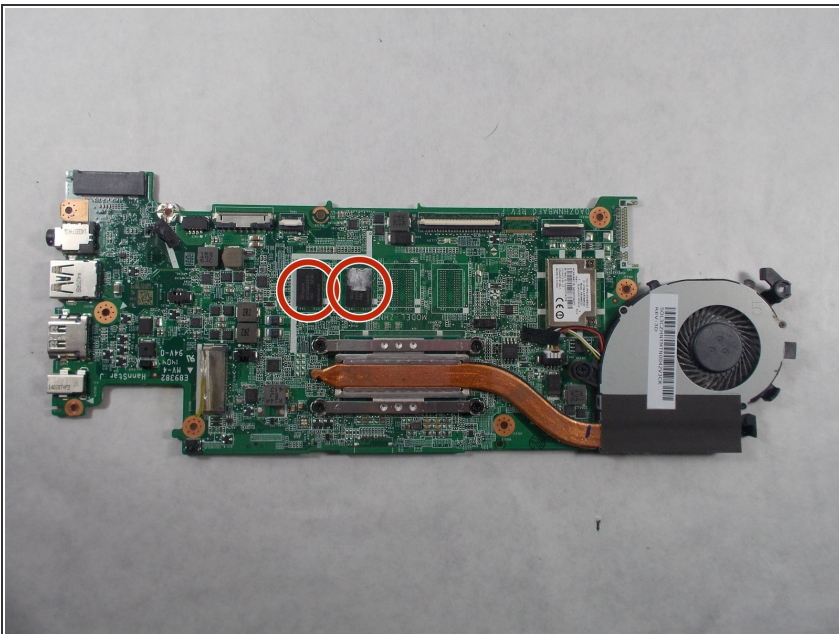
- Position the back of the spudger on the display cable.
- Push the display cable out using the back of the spudger.

Step 29



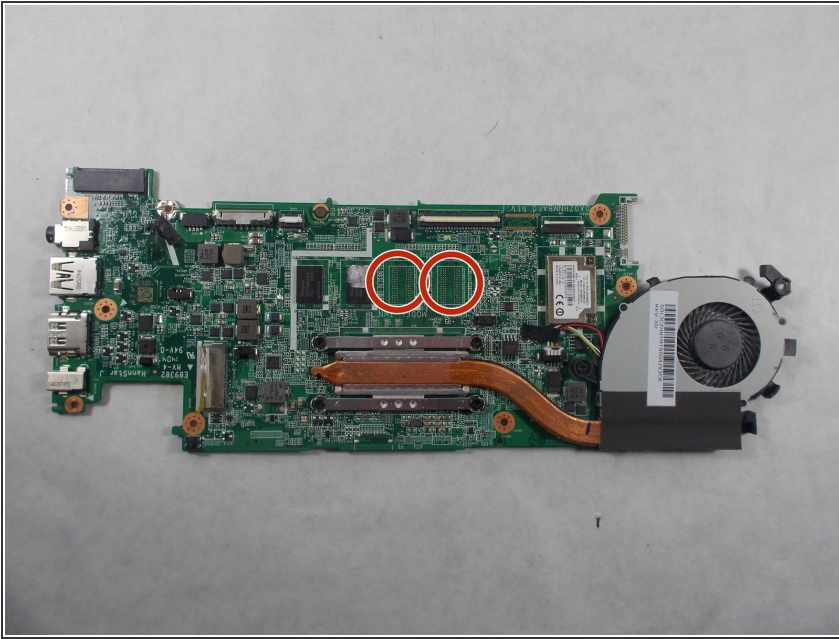
- Lift up the CPU fan to ensure that no wires are tangled. If the black and white wires are tangled please repeat step 5.
- Lift up the other end of the motherboard to completely remove the motherboard.

Step 30 — RAM



- Carefully desolder the sides of the old RAM using a soldering iron.
- For soldering help, visit iFixit's [How to Solder and Desolder Connections](#) guide.

Step 31



- ☒ Put the new RAM in place of the old RAM.
- Carefully solder the new RAM into place.

To reassemble your device, follow these instructions in reverse order.